

EDF's Deemed tariff

Ofgem Default Tariff Cap prices

Deemed - credit



All prices shown are the Ofgem Default Tariff Cap rates before discounts under the Government Energy Price Guarantee have been applied.

These prices are inclusive of VAT charged at 5% and rounded. Prices effective from 1 October 2023

Supply area		Electricity Prices (with VAT)					Gas Prices (with VAT)	
		Standard Meter ²		Economy 7 Meter ³			Standard Meter ²	
		Daily standing charge ¹	Unit rate (kWh)	Daily standing charge ¹	Day rate (kWh)	Night rate (kWh)	Daily standing charge ¹	Unit rate (kWh)
East Midlands	Direct Debit	50.71p	26.76p	50.70p	34.48p	13.78p	29.63p	6.765p
	Cash/Cheque	57.23p	28.17p	57.21p	36.28p	14.51p	35.00p	7.121p
	PAYG	57.64p	26.33p	57.62p	35.15p	12.03p	40.45p	6.546p
Eastern	Direct Debit	44.02p	27.93p	44.03p	39.92p	8.57p	29.63p	6.785p
	Cash/Cheque	50.18p	29.40p	50.17p	41.34p	9.95p	34.99p	7.142p
	PAYG	50.98p	27.49p	50.98p	38.54p	9.63p	40.45p	6.598p
London	Direct Debit	38.52p	28.43p	38.54p	37.58p	12.77p	29.61p	6.897p
	Cash/Cheque	44.39p	29.93p	44.39p	39.56p	13.44p	34.99p	7.259p
	PAYG	45.50p	27.99p	45.51p	37.98p	11.39p	40.44p	6.672p
Midlands	Direct Debit	54.37p	26.85p	54.36p	35.39p	12.74p	29.63p	6.817p
	Cash/Cheque	61.09p	28.27p	61.06p	37.25p	13.40p	34.99p	7.176p
	PAYG	61.28p	26.42p	61.26p	35.54p	11.71p	40.45p	6.577p
North East	Direct Debit	57.46p	26.58p	57.44p	35.18p	12.31p	29.63p	6.816p
	Cash/Cheque	64.34p	27.98p	64.31p	37.03p	12.96p	34.99p	7.174p
	PAYG	64.35p	26.14p	64.33p	35.28p	11.34p	40.45p	6.607p
North Scotland	Direct Debit	59.39p	27.26p	59.38p	34.89p	14.30p	29.63p	6.849p
	Cash/Cheque	66.39p	28.70p	66.34p	36.70p	15.05p	34.99p	7.209p
	PAYG	66.28p	26.82p	66.26p	35.21p	13.01p	40.45p	6.626p
North Wales and Merseyside	Direct Debit	62.23p	28.26p	62.21p	38.33p	11.50p	29.61p	6.929p
	Cash/Cheque	69.37p	29.75p	69.33p	40.35p	12.10p	34.99p	7.294p
	PAYG	69.09p	27.82p	69.07p	37.66p	11.59p	40.44p	6.676p
North West	Direct Debit	51.81p	27.21p	51.80p	35.89p	12.56p	29.61p	6.898p
	Cash/Cheque	58.40p	28.65p	58.37p	37.77p	13.22p	34.99p	7.261p
	PAYG	58.73p	26.78p	58.72p	35.97p	11.64p	40.45p	6.656p
South East	Direct Debit	47.58p	28.09p	47.58p	38.30p	11.10p	29.61p	6.924p
	Cash/Cheque	53.93p	29.57p	53.92p	40.30p	11.69p	34.99p	7.287p
	PAYG	54.52p	27.66p	54.52p	37.64p	11.19p	40.44p	6.688p
South Scotland	Direct Debit	62.10p	26.88p	62.08p	35.54p	12.44p	29.63p	6.849p
	Cash/Cheque	69.23p	28.30p	69.19p	37.41p	13.09p	34.99p	7.209p
	PAYG	68.97p	26.45p	68.95p	34.67p	12.81p	40.45p	6.626p
South Wales	Direct Debit	54.23p	27.45p	54.22p	36.45p	12.38p	29.61p	7.049p
	Cash/Cheque	60.94p	28.89p	60.90p	38.36p	13.04p	34.98p	7.420p
	PAYG	61.14p	27.01p	61.11p	36.12p	12.01p	40.44p	6.793p
South West	Direct Debit	58.70p	27.19p	58.68p	36.71p	11.38p	29.61p	7.097p
	Cash/Cheque	65.64p	28.62p	65.61p	38.63p	11.97p	34.98p	7.471p
	PAYG	65.59p	26.75p	65.57p	36.48p	10.86p	40.43p	6.925p
Southern	Direct Debit	49.98p	27.51p	49.98p	36.54p	12.43p	29.61p	6.992p
	Cash/Cheque	56.46p	28.96p	56.44p	38.46p	13.08p	34.99p	7.360p
	PAYG	56.91p	27.07p	56.90p	36.92p	11.07p	40.44p	6.762p
Yorkshire	Direct Debit	56.02p	26.52p	56.00p	35.19p	12.32p	29.63p	6.825p
	Cash/Cheque	62.83p	27.91p	62.79p	37.05p	12.96p	34.99p	7.184p
	PAYG	62.92p	26.09p	62.90p	34.67p	12.23p	40.45p	6.617p

¹The **Daily standing charge** applies whether or not you use any electricity or gas at your premises as supplied by EDF.

² **Standard meter** - this is the most common type of meter for electricity and gas. These meters show a Unit rate (kWh) using a mechanical clock, digital display or dial.

³ **Economy 7 meter** - also known as E7. This is a two-rate meter for electricity that shows a Day rate (kWh) and a Night rate (kWh). Night rate gives you cheaper unit rates for a total of seven hours, typically between 10pm and 8am (actual times are set by the local network operator and can be found on your bill). All other kWh will be charged at the Day rate.

The charges shown are only available for supplying electricity and gas to continuously occupied premises used only or mainly for domestic purposes.

If you are responsible for making payments under a Green Deal Plan, we will collect those payments from you using the same payment method as you use to pay for your energy.

Ofgem Default Tariff Cap prices

Deemed - prepayment



All prices shown are the Ofgem Default Tariff Cap rates before discounts under the Government Energy Price Guarantee have been applied.

These prices are inclusive of VAT charged at 5% and rounded. Prices effective from 1 October 2023

Supply area		Electricity					Gas	
		Standard Meter ²		Economy 7 Meter ³			Standard Meter ²	
		Daily standing charge ¹	Unit rate (kWh)	Daily standing charge ¹	Day rate (kWh)	Night rate (kWh)	Daily standing charge ¹	Unit rate (kWh)
East Midlands	Prepayment	57.64p	26.33p	57.62p	35.15p	12.03p	40.45p	6.546p
Eastern	Prepayment	50.98p	27.49p	50.98p	38.54p	9.63p	40.45p	6.598p
London	Prepayment	45.50p	27.99p	45.51p	37.98p	11.39p	40.44p	6.672p
Midlands	Prepayment	61.28p	26.42p	61.26p	35.54p	11.71p	40.45p	6.577p
North East	Prepayment	64.35p	26.14p	64.33p	35.28p	11.34p	40.45p	6.607p
North Scotland	Prepayment	66.28p	26.82p	66.26p	35.21p	13.01p	40.45p	6.626p
North Wales and Merseyside	Prepayment	69.09p	27.82p	69.07p	37.66p	11.59p	40.44p	6.676p
North West	Prepayment	58.73p	26.78p	58.72p	35.97p	11.64p	40.45p	6.656p
South East	Prepayment	54.52p	27.66p	54.52p	37.64p	11.19p	40.44p	6.688p
South Scotland	Prepayment	68.97p	26.45p	68.95p	34.67p	12.81p	40.45p	6.626p
South Wales	Prepayment	61.14p	27.01p	61.11p	36.12p	12.01p	40.44p	6.793p
South West	Prepayment	65.59p	26.75p	65.57p	36.48p	10.86p	40.43p	6.925p
Southern	Prepayment	56.91p	27.07p	56.90p	36.92p	11.07p	40.44p	6.762p
Yorkshire	Prepayment	62.92p	26.09p	62.90p	34.67p	12.23p	40.45p	6.617p

¹ The Daily standing charge applies whether or not you use any electricity or gas at your premises as supplied by EDF.

² Standard meter - this is the most common type of meter for electricity and gas. These meters show a Unit rate (kWh) using a mechanical clock, digital display or dial.

³ Economy 7 meter - also known as E7. This is a two-rate meter for electricity that shows a Day rate (kWh) and a Night rate (kWh). Night rate gives you cheaper unit rates for a total of seven hours, typically between 10pm and 8am (actual times are set by the local network operator and can be found on your bill). All other kWh will be charged at the Day rate.

The charges shown are only available for supplying electricity and gas to continuously occupied premises used only or mainly for domestic purposes. If you are responsible for making payments under a Green Deal Plan, we will collect those payments from you using the same payment method as you use to pay for your energy.

Deemed electricity and gas prices - notes

For further details on the tariff, please call us on **0333 200 5100**. If you are a prepayment customer, please call us on **0333 200 5110**.

To find your electricity prices, look in the left hand column to find your supply area.

The columns to the right allow you to identify the meter that applies to you (Standard or Economy 7) and find the prices relevant to you depending on your chosen payment method.

Payment methods

Direct Debit: This is one of the cheapest ways to pay for your energy because your unit rate is lower in comparison to other payment methods. If, for any reason, you stop paying by Direct Debit we can move you onto cash/cheque or Pay As You Go prices, which may be higher.

Pay As You Go: Pay As You Go is a quick and easy way to pay for your energy and means paying in advance through a smart meter. You can pay on the app, online via My Account, in-store with a top up card or over the phone.

Cash/Cheque: You pay a higher unit rate for Cash/Cheque than for Direct Debit. If you pay by Debit or Credit card, you are charged Cash/Cheque prices.

Prepayment: Means paying in advance through a Prepayment meter using a prepayment key/card.

Your gas prices are shown in the blue column to the right of the electricity prices.

Different charges apply in the case of SoLR (Supplier of Last Resort) direction from Ofgem, which we will have sent to you at the time we are directed to supply. You can find these on our website at my.edfenergy.com/gas-electricity/tariff-information-labels or by calling us on 0333 200 5100.

A full list of payment methods can be found on the back of your bill.

- Some of these prices have been rounded. In some instances, more decimals may be shown on your bill. Prices are shown 'with VAT'. We will charge VAT at the rate which applies for residential energy supplies. This is currently 5%.
- The charges in this leaflet are only available for supplying electricity and gas to continuously occupied premises used only or mainly for domestic purposes.
- If you are responsible for making payments under a Green Deal Plan, we will collect those payments from you using the same payment method as you use to pay for your energy. We'll only collect Green Deal charges that become due after we start supplying you, and we'll pass them on to your Green Deal provider.

Important information (Principal Terms)

We've tried to summarise what we believe to be the key terms, but they're all important and you may have a different view of what is most significant to you. That's why it's important you read our full terms and conditions and let us know if you have any questions. To view your full terms please go to edfenergy.com/tariff-info

Charges

The charges for your energy supply are set out on pages 2 and 3. You are ultimately responsible for payments for any charges incurred in accordance with these terms.

By being supplied by us on this deemed supply terms means: if you do not have a smart meter you agree to have one fitted, or, if you decide you don't want one installed, you can opt out by letting us know.

The amount of energy you use is worked out in pence per kilowatt hour. For gas, we need to convert the consumption recorded on your meter into kilowatt hours. The method of calculation we use can be found on each gas bill we send you.

Closure

These charges are variable and can be changed at any time in accordance with Clause 3 of your deemed supply terms.

Direct Debit

If you want to pay for your energy by Direct Debit, we have to agree the fixed amount you need to pay at first to cover your yearly energy costs. We then review this amount twice a year, we might also carry out more frequent reviews to help keep your energy costs on track.

We estimate how much we think you'll spend on your energy over the coming year based on information we have in our records, such as your previous energy usage and your type of property. When it's time for your Direct Debit review, we also take into account any balance on your account. We then divide this annual cost into 12 monthly payments, which are spread equally across the year. This means that you won't end up paying more in winter or less in summer – just the same amount all year round. .

Whenever we review your Direct Debit, we'll estimate the cost of the energy you will use (your 'estimated annual energy cost') up to the date of the next annual Direct Debit review date. This will be based on your past energy use, current prices, and any debt or credit on your account.

At your annual Direct Debit review, if we have an up to date meter reading and your account is in credit by more than £150, you will automatically receive a refund. Any credit lower than this amount or any debit will be used in the calculation for your next 12 month's Direct Debit payments.

Pay As You Go rules

Pay As You Go is a quick and easy way to pay for your energy and the smart way to budget and keep track of your energy and is exclusive to customers with a smart meter. Pay on the app, online, in-store or over the phone. We recommend that if you prefer to make payments like this, low balance alerts are set up for one or both fuels. The alerts sent by SMS or email will let you know if your balance for either fuel goes below a pre-set threshold. Just make sure you keep an eye on your balance to make sure you've always got credit to cover your usage. You can set up your low balance threshold using the EDF App or in MyAccount. A low balance alert will be triggered when the fuel reaches the balance threshold you've set up. If you choose Pay As You Go as your payment method, this will operate in accordance with our 'Pay As You Go Explained' leaflet, which contains information on auto top up and low balance alert and is available at edfenergy.com/paygpolicy or to request a copy contact us on 0333 009 7000. For more information on how these functions work please visit edfenergy.com/paygpolicy.

Reconciliation

From time to time there may be discrepancies between PAYG customers' meter(s) and their account. EDF reserves the right to refund/deduct any over or underpayment for energy charges and make any metering adjustments. You should always check your balance and ensure your account is topped up with credit, as your meters could self-disconnect if there's no credit and you'll run out of power.

IF YOU DON'T PAY AS YOU AGREED, YOUR PAYMENT METHOD AND CHARGES MAY CHANGE

If you don't pay our bills in the way we've agreed, we can switch you to another payment method (which could involve changing your meter too) and this may increase the price you pay for your energy. If this means we fit a prepayment meter you may be responsible for the costs, which we'll tell you about at the time. If you're struggling, you can pay through deductions to social security you receive, by regular instalments or by using a prepayment meter (provided we consider this safe and practical).

Supply Contract

Because you have not signed an express contract with us you are currently supplied on one of our deemed contracts. Your deemed contract will end if you subsequently enter into an express energy-supply agreement with us, on the date a new supplier starts to supply you or on the date you no longer own, rent or use the supply (provided we have received at least two working days' notice from you of this). Further details on this are included in Clause 4 of your deemed contract terms.

Switching to us

Provided you have provided sufficient information and no exemptions apply, your supply will start within 5 working days from the earlier of your cooling off period ending or your instruction to transfer during the cooling off period. Should you choose to cancel during your cooling off period the terms of this tariff continue to apply until you have either:

- (i) agreed another tariff with us;
- (ii) returned to your old supplier;
- (iii) agreed another tariff with another supplier; or

TERMS AND CONDITIONS

Deemed Contract Scheme

Scheme for setting out the terms and conditions that will apply to the deemed contracts made under Schedule 6 to the Electricity Act 1989 and Schedule 2B of the Gas Act 1986.

When the scheme begins

This scheme originally came into force on 1 October 2001 and applies to electricity or gas (or both) we supply under a deemed contract to domestic customers, Micro Business and SME customers.

The scheme

We have made this scheme in line with Schedule 6 of the Electricity Act 1989 (the 'Electricity Code') and Schedule 2B of the Gas Act 1986 (the 'Gas Code'). These codes allow us to make changes (known as 'revisions') to this scheme from time to time. If we do make a revision, we will first send the full text of the revision to our industry regulator, after which time the revision will come into force. Once the revision comes into force, it will apply to all deemed contracts we create from that point on. It will also apply to any deemed contracts that already exist, unless the revision says otherwise. If we need to provide evidence of this scheme, any revisions to it, or the Deemed Contract Schedule of Charges (or any changes to it) in any courts of justice or any legal proceedings, we will produce a copy of any document we have sent to our industry regulator as conclusive evidence.

Definitions

The following words and phrases used in this contract have the following meanings.

- **'The Citizens Advice consumer service'** – provides free, confidential and impartial advice on consumer issues, by phone and online, to individual consumers and small businesses.
- **'cooling off period'** means the 14-day period starting the next day after signing up with us during which you can cancel this contract without paying any applicable exit fee.
- **'deemed contract'** means a contract to supply gas or electricity (or both), under these terms. These terms only apply if you are a domestic customer, micro business, or a small or medium enterprise (SME) customer, and using our electricity or gas services (or both) at your premises, without entering into a formal agreement with us for those services.
- **'gas transporter'** – the company licensed to deliver gas through pipes to your premises.
- **'Green Deal charges'** – means the charges that we must collect from you as part of the Government scheme for the collection of charges for energy efficiency measures through energy bills and 'Green Deal premises' means premises at which Green Deal charges are owed for the installation of energy efficiency measures.
- **'industry regulator'** – the Office of Gas and Electricity Markets set up by Parliament to protect the interests of consumers.
- **'local electricity distributor'** – the company which owns or operates the distribution network used to deliver electricity to your premises.
- **'Micro Business'** – means a company which meets one of the following criteria: consumes less than 293,000 kWh of gas a year, or consumes less than 100,000 kWh of electricity a year, or has fewer than ten employees (or their full-time equivalent) and an annual turnover or annual balance sheet total not exceeding €2m.
- **'Ofgem'** is the Office of Gas and Electricity Markets, set up by Parliament to protect the interests of energy customers. Their address is 9 Millbank, London, SW1P 3GE.
- **'Energy Ombudsman'** is an independent body approved by Ofgem to investigate complaints. Visit: ombudsman-services.org/energy or call 0330 440 1624.
- **'payment method'** – payment by either Direct Debit, cash or cheque, Pay As You Go or any other method we determine.

(iv) 15 working days has passed since your cancellation, after which you will remain on our deemed contract scheme.

Terms

Whilst we have tried to summarise above the terms that we believe might reasonably be of most significant impact, all the terms within our deemed terms and conditions are important and we appreciate that different customers may have different views as to what is of most significance to them. For this reason it is important that you have access to our full deemed terms and conditions. To ensure this is the case, and for the purposes of full transparency, your full deemed terms and conditions and schedule of charges are made available to you at all times via edfenergy.com/energy-tariffs/tariff-terms or by contacting us on 0333 200 5100. Please make sure you read these terms and if you have any questions regarding them please let us know so we can clarify these accordingly.

- **'premises'** – the premises (including any part of any land or building or structure) we supply electricity or gas (or both) to under this contract.
- **'smart meter'** – the meter and equipment we can use to measure how much gas or electricity (or both) you are using, without having to visit your home. A smart meter means you can also see how much gas or electricity you are using.
- **'SME customer'** (small or medium enterprise customer) – any customer who takes a supply of electricity or gas (or both) from us in connection with a business (including any business involving letting, managing agent or accommodation services) and which we bill through our customer information system (CIS) or our SAP system. (If you are not sure whether you are billed through CIS or SAP, please phone our helpline on 0333 200 5103.)
- **'supply' and 'supplied'** – the energy services provided under this contract (but not otherwise). This may also include services provided in connection with the supply of electricity or gas to the premises.
- **'we', 'us', 'our'** – the licensed energy supplier for the services provided to you under this contract (that is, EDF Energy is a trading name used by EDF Energy Customers Ltd, Reg. No. 02228297 whose Registered Office is at 90 Whitfield Street, London, W1T 4EZ, incorporated in England and Wales, operating under the trading name of EDF Energy and using the supply IDs LOND, SEEB and SWEB).
- **'working day'** – means a Monday to Friday excluding public holidays in England.

Full terms and conditions for supplying electricity or gas (or both)

These terms apply to you if you are a domestic customer, micro business, or a small or medium enterprise (SME) customer, and you are using our electricity or gas services (or both) at your premises but have not entered into a formal agreement with us for those services.

Please read these terms carefully so that you fully understand our commitments and our responsibilities.

If we supply gas to your premises we may need to enforce other terms if your premises are not directly connected to the gas pipeline network operated by National Grid Gas.

Note: In these terms and conditions, when we refer to **'energy'** we mean gas or electricity (or both) we provide to domestic, Micro Business or SME customers. When we refer to **'services'**, we mean gas, electricity, energy-related services and any other services we provide to domestic, Micro Business or SME customers.

1 Your and our responsibilities

- 1a This contract sets out our standard terms and conditions for supplying services under our deemed contract scheme. These terms and conditions apply to you only if you have not entered into a current energy-supply agreement with us (which can be enforced by law), but we are providing you with services.
- 1b EDF is the trading name we use for providing the services. In line with these terms, we agree to supply services at the premises for the length of this contract.
- 1c You agree that you own or use the premises (or will on the date that the services start) and that the premises are currently connected to a mains gas network or your local electricity distributor's distribution network, or both (as appropriate).
- 1d You agree to pay any part of our charges for services that are not currently part of a genuine dispute.
- 1e You agree that, for as long as we are the supplier registered to your meter point administration number or meter point reference number (as applicable) as the supplier responsible for supplying energy to your premises, all energy that

passes through your meter (or meters) or is supplied to the premises (or both) will be treated as having been supplied under our deemed contract scheme, even if you have a contract with any other person for supplying energy to your premises

- 1f You understand if you have a smart meter you will lose the functionality currently available to you by switching to EDF.
- 2 **Access to premises and meters**
 - 2a You confirm that you are legally able to, and have permission to, allow us (or someone appointed by us) into the premises and have full access to your meter (or meters), including agreeing to us gaining remote access to your metering equipment, whenever we need to in line with these terms.
 - 2b You agree that you are responsible for all pipes, equipment, wires and cables, and all other fittings used in connection with supplying energy on your side of the energy meter (your side of the meter starts at the point energy leaves your meter after the meter has measured it), and that you will make sure that they are kept in good working order and in safe condition at all times. Any energy losses that happen on your side of the meter are your responsibility.
 - 2c You agree to give your gas transporter, your local electricity distributor or us (or our employees, agents or subcontractors) safe, full and free access to your premises, and all equipment, wires and cables, and all other fittings used in connection with supplying energy to your premises. If there are any obstructions that prevent us from gaining access to your premises, and all equipment, wires and cables, and all other fittings used in connection with supplying energy to your premises, you are responsible (at your own cost) for removing the obstruction:
 - 2c1 whenever there is a possibility of danger or damage to any thing or property, or at any time we use our powers under an Act of Parliament (or any regulation or similar law made under it) relating to how we deliver or supply energy; and
 - 2c2 at all reasonable times for the purposes of installing, maintaining, inspecting, testing or replacing any lines, pipes, wires, cables or any other equipment used in connection with delivering or measuring energy.
 - 2d You confirm that the premises have, and that you are authorised to use, metering equipment installed which is capable of providing the information we need to work out your charges in connection with the relevant tariff. The metering equipment must meet relevant industry standards for safety, accuracy and reliability. If you are not sure whether the metering equipment installed at the premises meets these standards, you should contact us. If the premises do not have satisfactory metering equipment installed, we may increase your charges (see clause 3) or ask you to replace your meter, which may involve an extra charge.
 - 2e You must make sure that all metering equipment (whether it belongs to us or another person) on or at the premises is not damaged or stolen or lost. You must pay us any costs we may reasonably have to pay (either directly or indirectly) for replacing or repairing the metering equipment (including any call-out charges), unless the damage is caused by fair wear and tear or as a result of something we have done or failed to do.
 - 2f We will not be responsible for any fault relating to any meter or other fitting that we do not own or that has been provided on our behalf, or for any consequences resulting from that fault.
 - 2g If you take a supply of energy through a prepayment meter, and you use an electronic or token meter, it is your responsibility to make sure you buy enough credit units. You must also keep and look after the plastic card, key or other charging device, keeping it clean, safe and free from damage, otherwise we may charge you for providing

- a replacement card or key. If you fail to do this, we may charge you any costs we may reasonably have to pay (either directly or indirectly) as a result. You must only use the most recent key or card (unless otherwise instructed by us) to charge your prepayment meter, otherwise your meter may not be updated with the correct pricing information which may result in you paying a higher price for your energy supply, or for your energy supply prices changing.
- 2h If this contract (in relation to any service) ends, we can:
- 2h1 recover any energy meter we own or have leased; and
- 2h2 authorise any of our officers, employees, agents, contractors (or any other person we authorise) to enter your premises to remove all relevant meters.
- We will not use this right if another supplier agrees, before the date this contract ends, to buy or otherwise take possession of that meter on terms that make sure we receive appropriate compensation for the meter's value.
- 2i There may be times when we want to install, or appoint another person to install, any energy meter and any associated metering equipment at your premises so that we can improve the service we provide to you. If this is the case, you agree to allow us to do this, and to let us (or anyone we appoint) into the premises to install the meter and any associated metering equipment. We will try to give you reasonable notice before we visit your premises.
- 2j From time to time the information from your smart meter may not correctly reflect the energy you have used. In such circumstances, we reserve the right to apply the correct charges which will be applied to your smart meter or reflected in a separate bill.
- 3 Prices and changes to terms**
- 3a The prices we charge you, and the ways you can make your payment, are set out in the Deemed Contract Schedule of Charges (see appendix 1 to this contract). The Deemed Contract Schedule of Charges forms a part of these terms and conditions.
- 3b To work out the charges for energy we supply to you, we will apply the tariff we consider most appropriate to your type of meter.
- 3c We may change any of these terms at any time. If we make a change to the terms of this contract, we will do so by making a revision. We will continue to supply you after we have made this revision, in line with the revised terms.
- 3d We may also make changes to the information shown in the Deemed Contract Schedule of Charges (including the prices we charge you) at any time. Unless you have a prepayment meter, any change will apply to energy we supply to you from the date we make that change. If you have a prepayment meter, your new charges may not apply until the next time you charge credit onto your meter or, if you have a token prepayment meter, until your meter has been reconfigured with the new prices. It is your responsibility to arrange an appointment to make sure your prepayment meter is correctly configured. Changes we make to the Deemed Contract Schedule of Charges are not classed as revisions, but any changes to the prices we charge you will be shown in the next bill we send to you after making the changes.
- 3e There may be times when we need to change these terms other than in the circumstances described in clause 3c above. We would need to do so if we have to act in line with any relevant matter that changes our business costs in a way that is beyond our reasonable control. For example, this could be a relevant change in the law, government instruction or regulation, or to any tax or duty that affects our businesses.
- 3f We will publish any change we make to our prices for any of the reasons given in clause 3d above in the Deemed Contract Schedule of Charges.
- 3g If you take any service other than the service we or your gas transporter or local electricity distributor provides as standard, or if you cause us or them to have to pay costs beyond those they would normally be charged to carry out our responsibilities to you, we have the right to charge you any reasonable costs we have to pay as a result.
- 3h If the method of payment you use changes (for any reason), the price we charge you may change to reflect this. Also, if we need to change any energy meter or associated equipment because the method of payment you use has changed, we may make a charge to you to cover these costs.
- 3i Any taxes, duty or levies on energy (including VAT) will apply to all our charges to the extent that they are applicable, or be charged on the work done to process, distribute, transport, sell or supply energy, whether we pay these taxes and other charges direct or refund someone else who is responsible for making the payments.
- 3j You agree to pay for other charges which apply under this contract and under any extra conditions we have agreed with you from time to time which we include on your energy bill. You also agree to pay for other charges which arise in connection with Green Deal premises (such as Green Deal charges) and which we are obliged to collect from you. Smart meters automatically send us your meter readings.
- 3k It is your choice whether or not you would like to have a Smart meter installed at your property. By signing up to this tariff you agree to having a Smart meter fitted when we're installing them in your area, and to us contacting you to ask you to book an appointment for its installation. However, if you do not wish to have a Smart meter installed you may, at any time, inform us that you are opting out of having a Smart meter.
- 4 When this contract starts, your rights to end this contract and our rights to stop your supply**
- 4a This contract comes into force either:
- 4a1 on the date we began to supply you (for any reason); or
- 4a2 on the date you began to take a supply from us.
- 4b This contract will end in the following circumstances.
- 4b1 If you enter into a formal energy-supply agreement with us or with another energy supplier (a 'new supplier'), the contract will end:
- a on the date the new supplier starts to supply that energy to you, as long as they are registered with the local metering point administration service as the supplier responsible for supplying energy to your premises; or
- b on the date you and we agree that your formal supply agreement is considered to have started, as long as you enter into a formal energy-supply agreement with us.
- 4b2 If you no longer own or occupy the premises, the contract will end:
- a on the date you stop owning or occupying the premises, as long as you have given us at least two working days' notice of this, in writing (in your notice, you should specify the date you will no longer own, rent or use the premises); or
- b two working days after we receive your notice, in writing, that you have stopped owning, renting or using the premises; or
- c on the date we next read the meter at the premises or on the date a new supplier begins to supply the premises, if you do not give us notice that you have stopped, or will soon stop, owning or occupying the premises.
- 4b3 In addition, and for the avoidance of doubt, where you, as an individual, are the owner of the premises and we have evidence to reasonably conclude that you continue to be present, or operating from the premises, then you shall be treated as remaining in occupation of the premises, irrespective of whether other individuals, businesses or companies are also in occupation during the same period. In accordance with Schedule 6 of the Electricity Act 1989 and Schedule [2B] of the Gas Act 1986, all occupiers shall at all times be fully liable for all charges associated with the supply of energy to the premises on a joint and several basis.
- 4b4 If this contract ends validly under any other term of this contract, or if you break a term of this contract and we disconnect the supply to your premises or end this contract.
- 4b5 If the industry regulator makes a 'Supplier of Last Resort' direction (when the regulator appoints another supplier to take over responsibility for our customers) or any other valid direction for your premises, and this direction appoints a supplier other than us to provide the services. You will still be legally responsible for paying our charges for providing the services – even if you no longer own, rent or use the premises – until this contract ends under this clause (4b). If we are providing you with more than one service, ending one service will not automatically end the contract for the other service (or services).
- 4b6 If this contract is in place because we've been appointed by the industry regulator to take over from your previous supplier as a 'Supplier of Last Resort' and you had a credit balance with them, we'll honour it if we committed to do so before we were appointed. We may need to get in touch to check certain information before we do.
- 4c When this contract ends, we will take all reasonable steps to send you a final bill or statement within 6 weeks. Where new information becomes available, we'll send you a corrected final bill as soon as reasonably practicable. We may need to get a final energy meter reading before we can do this otherwise we may need to bill you based on an estimated reading.
- 4d Unless this contract ends under clause 4b, this contract will continue to apply and you will still be legally responsible for paying all charges made under it until the contract ends, including any charges relating to power used by somebody else if you have failed to notify us that you no longer own or occupy the premises.
- 4e By taking a supply of energy under this contract, you are authorising us to suspend or stop the supply of energy to your premises in the following circumstances:
- 4e1 You do not pay any security deposit when we ask you to, or all or any part of our charges (that are not part of a genuine dispute) when they become due whether under these terms or otherwise.
- 4e2 You do not carry out any of your other responsibilities under this contract.
- 4e3 You break any of the terms of this contract in a serious way or more than once (for example, if we reasonably believe that you have stolen energy or deliberately interfered with an energy meter or with any part of the energy metering equipment).
- 4e4 We need to cut off your supply of energy in line with any of the energy industry arrangements we work to.
- 4e5 There is a risk of danger to you or other members of the public if we continue the supply.
- 4e6 You are declared bankrupt, an organisation or individual takes formal steps to have you declared bankrupt, or an organisation or individual begins or threatens any other form of insolvency proceedings against you. If, for any reason, we continue to supply you in these circumstances, we may need to fit a prepayment meter at your premises. You will pay the costs of this, which we may collect through the prepayment meter. This action will not affect any other rights we may have.
- 4e7 There are circumstances beyond our reasonable control which mean we are not able to perform our duties under this contract. These circumstances include anything any other energy supplier, distributor, shipper, or transporter has done or failed to do.
- 4e8 We are no longer involved in any of the industry agreements we work to, or the relevant industry agents used to collect and process meter information or to provide and maintain your meter are no longer appointed for each supply point at your premises.
- 4f Both you and we can end this contract immediately if we are no longer licensed to supply energy at your premises.
- 4g If this contract ends, or if we become entitled to suspend or stop the supply of energy to your premises under this clause (4), we will be entitled to take action (or appoint someone else to take action on our behalf) to prevent energy from being supplied to your premises under the contract or to disconnect your premises (or both). You agree to let us into your premises at all reasonable times to do this.
- 4h Ending your contract will not affect any rights and responsibilities you or we had before the contract ended, or any rights and responsibilities due to come into force or continue after the date it ended. Clauses 4c, 5.5, 5.6 and 5.7 continue to apply even after our supply licence has ended. If you are responsible for paying Green Deal charges, your responsibility will continue after this contract has ended and your new supplier will collect your Green Deal charges when they take over supply to your premises.
- 5 Billing and payment**
- 5.1 We will give you a bill or statement at least once a year, but we may send you a bill or statement at any time, or in line with your agreed payment method and communication preferences. We will charge you for your energy usage based on the amount of energy we reasonably consider that you have consumed (or which we estimate you have consumed in accordance with paragraph 5.2 below) for the period covered by your bill, up to a maximum period of twelve months except where the charges relate to circumstances where:
- a) we have previously taken steps to recover payment for charges which are older than this,
- b) we have not taken action to recover older charges because of any unreasonable act or omission on your part, or
- c) any other circumstance applies which our regulator confirms that we may seek to recover charges relating to consumption that is older than twelve months.
- Where we don't have an up to date meter reading we will bill you based on an estimated reading using the information that we have available about your property, however to help us to improve the accuracy of your bills please provide us with an up to date and accurate meter reading at least once per year.
- 5.2 We have the right to estimate your usage if we don't have all the information we need (including the energy you have used during any period) to work out the charges you owe us. We'll estimate using information we have about the energy used at the premises. This may take into account adjustments to reflect seasonal changes in use and previous meter readings, or the characteristics of your home and household energy use, or price changes.
- 5.3 If your meter is not read immediately before the supply start date, or we reasonably believe that the reading we have is not accurate, we may estimate the amount of energy supplied during the period beginning with the supply start date and ending with either:
- (a) the date the meter is first correctly read after the date we start supplying you; or
- (b) the date your contract with us ends; whichever is earlier.
- 5.4 We can charge you any reasonable costs and expenses we have to pay in carrying out our responsibilities to you. This includes any reasonable costs connected with distributors' services, recovering money you owe, and disconnecting, reconnecting or replacing any metering equipment.
- 5.5 The amount of energy you use is worked out in pence per kilowatt hour. For gas, we need to convert the consumption recorded on your meter into kilowatt hours. The method of calculation we use can be found on each gas bill we send you.
- 5.6 We have the right to use or transfer any debts or credits you have on your energy account: (a) with a previous supplier to us; or (b) with us to a new supplier. Either of us can use credit you have on an account with us to pay off debt you owe us or our group companies.
- 5.7 If you're struggling, you can pay through deductions to social security you receive, by regular instalments or by using a prepayment meter (provided we consider this safe and practical). We'll also let you know how you can reduce your charges by using energy more efficiently.

- 5.8 We'll only take debt recovery actions which we consider to be proportionate.
- 6 Making a complaint**
- 6.1 It's really important that you're happy with the service we provide. If something's gone wrong, we want you to let us know, so we can fix the problem. Let our Customer Services team know what's happened. If they can't fix the problem straight away, they'll let you know how long it'll take and provide updates along the way. You can reach them on 0333 200 5100. (Monday to Friday from 8am-6pm) email customer_correspondence@EDFenergy.com or write to Freepost EDF CUSTOMER CORRESPONDENCE. If you're not happy with how your complaint is progressing, let your complaint handler know. They'll arrange for your complaint to be reassessed and let you know the outcome. You can see our full complaints procedure on our website.
- 6.2 If your complaint is unresolved after eight weeks or you've received a 'deadlock' letter, you can call the Energy Ombudsman on 0330 440 1624 (Monday to Friday 9am-5pm), email them at enquiry@ombudsman-services.org or by visiting ombudsman-services.org/sectors/energy. Their services are free and independent and any decision they make is binding on us – not you.
- 6.3 You can get help with energy problems. This includes issues with your bills, meters, or if you're struggling to pay for your energy use. If you live in England or Wales, go to citizensadvice.org.uk/energy or contact the Citizens Advice consumer service on 0808 223 1133. Calls are free. If you live in Scotland, go to energysadvice.scot or contact Advice Direct Scotland on 0808 196 8660. Calls are free. Citizens Advice and Advice Direct Scotland are the official sources of free and independent energy advice and support.
- 7 Security**
- 7a We may, at any time (except in certain circumstances if you are supplied through a prepayment meter or if it is otherwise not reasonable), ask you for a reasonable deposit (or other form of security) towards the charges in connection with any services we provide to you. If we do this, we will agree with you any special terms we need to enforce relating to the deposit. If we cannot agree these special terms with you, or if you do not provide the security deposit, we may stop supplying the services after giving you reasonable notice. If we do this, clause 4g will apply.
- 7b The deposit we ask for will not be more than the amounts the conditions of our energy licences allow. Unless it is reasonable for us to keep a deposit for a longer period, we will repay it to you after a year, with interest at a rate set by the energy regulator. We will make this repayment:
- 7b1 within 14 days if, during the previous full year, you have paid all our bills or statements within 28 days of the date of each bill or statement; or
- 7b2 within a month if the arrangements to supply you with energy under this contract have ended and you have paid all our charges.
- 7c When we repay a deposit, we may take from it any money you owe us.
- 7d If we ask you to pay a deposit and you do not agree to this, or you do not agree with the amount we have asked for, or if you have a complaint about any of our services, you may contact our customer service centre. You may also refer your complaint to the Energy Ombudsman which is an independent body approved by Ofgem, the UK gas and electricity regulator, to investigate complaints. Details of our complaint handling procedure can be found at edfenergy.com/sme-complaints. If you are a Micro Business you can also contact Citizens Advice consumer service (a free, confidential and impartial advice service for consumers) for clear, practical and unbiased advice on all kinds of questions relating to Micro Businesses. You can visit their website adviceguide.org.uk or call them on 0808 223 1133.
- 8 Limits of our liability**
- 8a We are only liable (legally responsible) to you as set out in these terms and conditions. We have no other duty or liability to you, and all responsibilities, guarantees and any other conditions implied by law or otherwise will not apply, as far as this is allowed by law.
- 8b We will not be liable to you for any event or circumstance beyond our reasonable control, including anything any other energy supplier, distributor, transporter or shipper does or fails to do.
- 8c We are not liable to you in any way for any indirect or direct loss of income, business or profits, or for any other loss or damage that could not reasonably have been expected at the time we entered into this contract, other than that caused by us acting fraudulently. Also, we will not be liable to you for any loss you suffer as a result of your liability to any other person (however this is caused). As a result, we recommend that you consider insuring yourself against all these types of losses.
- 8d As far as our liability to you is not otherwise excluded by this clause (7), and except as set out in 7e below, we will only be liable to you for up to a maximum of £10,000 for all incidents that lead to damage we are liable for or which involves us breaking a term of your contract (or both).
- 8e Nothing in these terms excludes liability for death or personal injury caused by our negligence or our liability to you resulting from us failing to carry out our legal duty under Section 12(1) of the Consumer Protection Act 1987.
- 8f This clause (7) will apply even after this contract has ended. As far as this clause (7) it excludes or limits liability, it will take priority over any other term of your contract (or contracts) for any services.
- 8g Each of the subclauses (7a to 7g) of this clause is a separate limit to our liability and will apply if, for any reason, one or more of these terms is found not to be valid or to be unreasonable. Also, each subclause will continue to apply after the contract has ended.
- 8h Ofgem issues a direction to another supplier requiring it to take over the supply to your premises, including in circumstances where Ofgem has decided that an event has occurred, or situation has arisen, which means it is allowed to revoke our supply licence; and has revoked our supply licence.
- 9 National Terms of Connection**
- Your supplier is acting on behalf of your network operator to make an agreement with you. The agreement is that you and your network operator both accept the National Terms of Connection (NTC) and agree to keep to its conditions. This will happen from the time that you enter into this contract and it affects your legal rights. The NTC is a legal agreement. It sets out rights and duties in relation to the connection at which your network operator delivers electricity to, or accepts electricity from, your home or business. In the case of some non-domestic sites, as further described in the NTC, the NTC provide for the continuing application of site-specific connection terms agreed with a previous owner or occupier of the site. Your network operator will be able to tell you whether or not site-specific connection terms exist. If you want to know the identity of your network operator, or want a copy of the NTC or have any questions about it, please write to: Energy Networks Association, 1st Floor, 4 More London Riverside, London, SE1 2AU; phone 0207 706 5137, or see the website at www.connectionterms.co.uk
- 10 Information policy**
- We respect your privacy and are committed to providing you with a clear understanding of how we use your data. To find out about the ways in which we protect and use your data, please visit our Privacy Notice and Policy at edfenergy.com/yourprivacy. If you'd like a hard copy of the privacy policy you can contact us on 0333 200 5100 and we'll post it to you.
- 11 Other conditions that apply**
- 11a We can transfer all or any of our rights (including the right to recover unpaid charges) and liabilities under your contract, or appoint a subcontractor to carry out any of our responsibilities under the contract (or both), without your permission.
- 11b Your rights and duties under this contract are personal to you. You cannot transfer them to another person without our written permission.
- 11c We may have to stop, suspend or limit the supply of services to your premises as a result of an Act of Parliament or any regulation or direction made under it. While that law, regulation or direction is in force, you must not use these services, or you must keep to the limits set on these services, in line with our instructions.
- 11d You agree to any change we need to make to the terms of your contract as a result of a change in a licence or an order or decision made by the relevant authority.
- 11e If we do not enforce any part of this contract at any time, this will not stop us from doing so in the future.
- 11f We may sometimes monitor and record calls that you or we make in relation to our customer services and telemarketing. This is to improve the quality of our customer services and for training purposes.
- 11g If you need to give us notice under this contract, you must deliver it by hand or post it or fax it to the address shown on this contract or on your last bill.
- 11h If we need to give you notice under this contract, we will send it to the address you have given us or the address of the premises we are supplying with energy under this contract (or both).
- 11i You and we should treat any notice sent by post to have been received two working days after it was sent, and any notice delivered by hand to have been given immediately when it was delivered.
- 11j These terms and conditions, the Deemed Contract Schedule of Charges, the information policy and any other documents we refer to make up the whole contract for the service between you and us.
- 11k We will not be breaking any term of this contract when we act in line with any rights or perform the duties under our energy-supply licences or any other relevant industry arrangement or laws.
- 11l Nothing in this contract will affect our rights or powers under our energy-supply licences or other relevant laws.
- 11m If any term of this contract is found not to be valid or cannot be enforced in full or in part, the rest of the contract will continue to apply as normal.
- 11n The laws of England will apply to each contract you have with us and the English courts will have full jurisdiction (legal authority) over any disputes relating to your contract and all non-contractual disputes which relate to the services.
- 12 Summary of Key Terms**
- 12a Our full name is EDF Energy Customers Ltd, registered office: 90 Whitfield Street, London, W1T 4EZ, incorporated in England and Wales (Trading as EDF Energy).
- 12b The services to be provided under this contract are the provision of gas and electricity supply, and all associated services required in the course of providing such supply (e.g. metering, customer services, billing etc). The service levels we are obliged to meet, and the compensation arrangements that apply if we fail to do so, are set out in the Standards of Performance booklet, details of which and our performance against these standards will be sent to you at least once a year. Other services are available from EDF (e.g. a range of Energy Services including the supply and installation of energy efficiency measures) and, unless otherwise agreed with us, these will be provided under the terms of a separate contract.
- 12c In order for us to be able to supply you your premises need to be connected to relevant local electricity distributor's and/or gas transporter's network. If your premises are not currently connected to the relevant local electricity distributor's and/or gas transporter's network please contact us on 0333 200 5117 and we will explain the process for connection and when that connection will take place.
- 12d Up to date information on all our applicable tariffs, and any others charge we might apply in relation to ancillary services, are available on request if you contact us on 0333 200 5100. You can see a copy of other charges we might apply in relation to ancillary services by visiting a page on our website at edfenergy.com/additionalcharges.
- 12e This supply contract is evergreen, which means it will continue until such time as it is terminated in accordance with its terms, following which to receive a further supply a new supply contract will need to be entered into with us. Any supplies that take place during any period where there is no contract in place between us will be subject to our deemed terms of supply published in accordance with the provisions of the Gas Act 1986 and Electricity Act 1989, each as amended from time to time.
- 12f If at any time you would like to make a complaint about the service you have received from EDF or have any dispute with us that you wish to discuss in more detail please speak to one of our customer services advisers on 0333 200 5100. If they have not been able to resolve your complaint or dispute please ask to speak to a manager. If you are still not satisfied, please visit the Energy Ombudsman website: ombudsman-services.org/energy or phone them on 0845 055 0760
- 13 Extra conditions if you have an EDF supplied smart meter**
- Your new smart meter and the display unit are an upgrade to your existing meter. By accepting this display unit and new smart meter, you agree to the following extra terms and conditions.
- 13a Unless otherwise agreed by us, we or our agents will own the smart meter and display unit provided by us or on our behalf at all times. If you move house, you must leave the meter and display unit in the premises.
- 13b You agree that we may use the smart meter to manage your gas and electricity supply without needing to visit your home. This includes reading the meter, monitoring the energy you use, repairing and updating the smart meter, switching the smart meter from credit to Pay As You Go and disconnecting your supply (in the circumstances set out in this contract).
- 13c Given that your energy charges will vary depending on your chosen product from time to time, and changes in energy charges over time, the information displayed on any display unit linked to your meter may not always be fully up to date and therefore is for guidance only and should not be relied upon as the definitive position.
- 13d We can use the information from the smart meter so that we can send you a bill, offer you the most appropriate tariffs and energy-saving products and for the other purposes set out in the information policy below. You will let us collect this information while we supply your electricity or gas (or both).
- 13e You must take reasonable care to make sure you do not damage or interfere with the display unit. If you do not, you will have to pay our agents' reasonable costs for visiting your premises and any work that we or they carry out to the display unit or other equipment.
- 13f You must tell us straight away if there is any damage, a fault or other problem with your display unit, or if you think it has been tampered with or if there are any changes to the display unit which may stop it from getting information from the smart meter (for example, if you carry out building work that may impact on communication between the two devices and/or us).

Appendix 1 - Deemed Contract Schedule of Charges

To see our Deemed Contract Schedule of Charges (as amended from time to time), phone us on 0333 200 5100 (see the note below) or visit [edfenergy.com/energy-tariffs/tariff-terms](https://www.edfenergy.com/energy-tariffs/tariff-terms)

Note: We may monitor and record calls to improve our service. Calls to UK wide numbers are included in any inclusive call plan

you may have. If you don't have an inclusive call plan, calls are charged at a national rate. Please check with your service provider if you're unsure.

Appendix 2 - Energy Consumer Guidance

It's important to know your rights when it comes to energy. You

can get free, independent advice from Citizens Advice if you need any help. For example, they can help answer questions about your bills or meter; and check if you can get discounts, grants or a cheaper tariff. Visit citizensadvice.org.uk/energy or contact the consumer helpline on **0808 223 1133** to find out more.

Calls to UK wide numbers are included in any inclusive call plan you may have. If you don't have an inclusive call plan, calls are charged at a national rate. Please check with your service provider if you're unsure.

[edfenergy.com](https://www.edfenergy.com)

EDF Energy is a trading name used by EDF Energy Customers Ltd. Reg. No. 02228297 whose Registered Office is at 90 Whitfield Street, London, W1T 4EZ, incorporated in England and Wales.

Prepayment: Getting Started



For more information about Prepayment meters, please visit <https://www.edfenergy.com/help-support/prepayment-meter>

Staying safe

Every two years we'll visit you to carry out a home meter health check. In between these visits, it's worth doing an occasional visual check yourself, paying attention to:

- The wiring** Does it look secure? Are any copper parts of the wiring exposed? When making visual checks remember not to touch the wires under any circumstances.
- The meter** Are there any burn marks on it or is it sparking at all? Is there any visible damage to the casing? Does the meter look secure and firmly attached to the wall?
- Visibility** Has the meter been tampered with? Is it hard to see because it's too high? Call us on 0333 200 5100 and we may be able to move it for you.

Please remember to take care and be safe when doing a visual check of your meter. Under no circumstances should you carry out a physical inspection.

1 - Activating your key/card

You'll soon receive your new EDF key/card. When you do, simply insert it into your meter for at least 30 seconds with the arrow facing up. This shouldn't affect any existing credit. This will activate it so it's then ready to top up with credit.

2 - Topping up

You can add credit to your key/card at any Payzone, PayPoint or Post Office. There are more than 50,000 outlets where you can top up and most are open seven days a week. To find your nearest visit [edfenergy.com/ways-to-pay](https://www.edfenergy.com/ways-to-pay) or call our prepayment team on 0333 200 5110.

3 - Adding credit to your meter

Once you've added credit to your key/card, it's easy to transfer it to your meter. Simply insert the key/card into your meter and your new balance should appear on the screen. You'll be able to see how much credit you've used across the whole year on your annual statement.

Please return your old key/card in the freepost envelope provided with your new key/card pack so we can recycle it.

Lost or damaged key/card.

If you lose or damage your key/card, call us on 0333 200 5110, we'll give you a new one for free the first time but you might be charged £7 for any further replacements. The credit already loaded on your meter will not be lost, but we will not be able to refund any credit that was on your key or card.

Check your receipt

Every time you add credit to your key/card you should be given a receipt. If you aren't, please tell the staff at the outlet. If your receipt shows 'credit failed' or 'cancelled', your charging hasn't worked. Just take it back to the outlet and the staff should be able to sort things out right there. If you weren't given a receipt then your charging might not have worked and you'll need to check this with the staff at the outlet.

Some common questions

What if I run out of credit and can't charge my Key/Card?

If you're running low on credit you may hear a warning beep. From 1 October 2022, your meter has an emergency credit of £10, which can be used if you can't get to a PayPoint, Payzone or Post Office® to top up. To release it just put your key/card in the meter when your credit is running low.

How do I pay for emergency credit?

You'll have to pay for any emergency credit you use the next time you top up. You won't be charged interest or a fee - you just pay for what you've used.

What should I do if credit from my Key/Card doesn't load onto the meter and the meter shows the "No Token" message?

Your key or card might need cleaning. Try doing this with a dry toothbrush or cloth. If you're still having trouble then it might be damaged. Call us and we'll send a replacement.

What happens if my electricity supply has gone off?

First, check the meter to see if the display is blank and if the red light has gone out. If it has, check with the neighbours to see if they still have a supply. If their supply is also off, it may be a power cut. Call your local network operator, who'll give you an estimated time for the supply going back on.

What happens if my electricity supply has gone off? but my neighbours are not affected?

Firstly, visually check the consumer unit in your home to see if a switch has tripped. If so you'll need to reset it. Under no circumstances should you carry out a physical inspection of the consumer unit or your prepayment meter. Instead call us on 0333 200 5110 to arrange for your prepayment meter to be repaired or call a qualified electrician.

What should I do if I have no supply and the meter displays a red light?

Your meter has run out of credit. You can release the emergency credit by popping the key or card into the meter.

What should I do after I've activated my emergency credit?

Recharge your key or card as soon as possible. You'll need to repay this emergency credit, as well as charging up the meter enough to cover your energy use until the next time you plan to charge your key or card. For your safety, we advise you not to use up all of your emergency credit. If you do and your electricity or gas goes off, please make sure all your electrical and gas appliances are switched off before you put your recharged key or card into your meter.

My meter is showing "error", what should I do?

It may be a fault with your meter key or card. Call our customer service team.

Can I still change supplier if I have debt on my meter?

If you're in debt up to £500 with your old supplier, your switch should usually still be able to take place, although you'll have to stay on a prepayment meter until the debt is paid off.

If you move home

If you move home it's important you run the balance left on the meter as close to zero as possible by timing when you put money on your meter. This is so you don't waste credit. We also need you to give us the following information:

Before the day you move out

- Your new address
- The date you're moving out

On the day you move out or as soon as possible after

- The meter readings on your meter
- The amount of unused credit on the meter.

You'll get a final statement from us. If you have any questions about this, or think you're owed a refund for unused credit, please get in touch with us on 0333 200 5110.

Your prepayment electricity meter

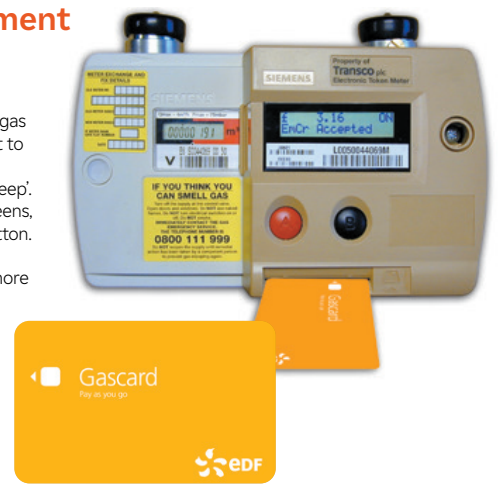
There's a lot of useful information held on your electricity prepayment meter.

Depending in your meter type you should be able to scroll through all the available screens by pressing the main button repeatedly.



Your prepayment gas meter

There's a lot of useful information held on your gas prepayment meter. To get to it, press and hold the red button until you hear a 'beep'. To move through the screens, keep pressing the red button. You might need to insert your gas card to access more detailed information.



[edfenergy.com](https://www.edfenergy.com)