

# Combwich Wharf Refurbishment

## Update: November 2020

# Overview of Main Work Areas



A crane is now positioned on the Abnormal Loads Quay to support the piling



# Progress Update

We're progressing with the installation of piles for the Abnormal Loads Quay, as seen in the pictures below. Specialist equipment has been brought onto site to help these activities. As with many aspects of construction, we're dependent on having good weather, for instance you won't see the crane in use over certain wind speeds.

Removal of the Transfer Slab revealed historic piles. The area has since been backfilled as shown in image 3, ahead of the new Transfer Slab construction.

Over the next week we'll be completing grouting on the two test piles. Because this activity needs to be carried out continuously, you may notice activity on the wharf beyond our usual working hours. This has been approved by Sedgemoor District Council and is a temporary measure for this activity only.

We anticipate that the piling activity will be noisier than previous works completed on the wharf. A series of mitigation and best practice measures are being used to ensure that noise associated to our works is within the thresholds approved by Sedgemoor District Council.

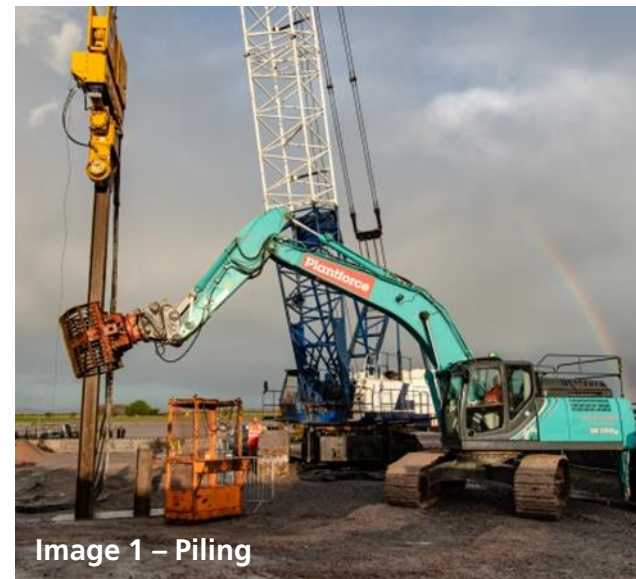


Image 1 – Piling



Image 2 – Piling



Image 3– Backfill on top of historic piles

# Double rainbow over the River Parrett



## Piles on site ready for installation



## Looking out to the River Parrett from the Abnormal Loads Quay



# Looking up the River Parrett from the public footpath



## How to keep in touch

We are grateful to the parish for your continued patience and support.

If you would like to keep up to date on the works taking place, the best way to do so is via this monthly update.

If you would like to be automatically sent a copy, please get in touch on the details below and let us know.

Alternatively, if you have any questions regarding the works please do let us know and we'll be happy to help.

## How to contact us:

Telephone - 0333 009 7070

Email - [hinkley-enquiries@edf-energy.com](mailto:hinkley-enquiries@edf-energy.com)

Website – [www.edfenergy.com/hpc](http://www.edfenergy.com/hpc)