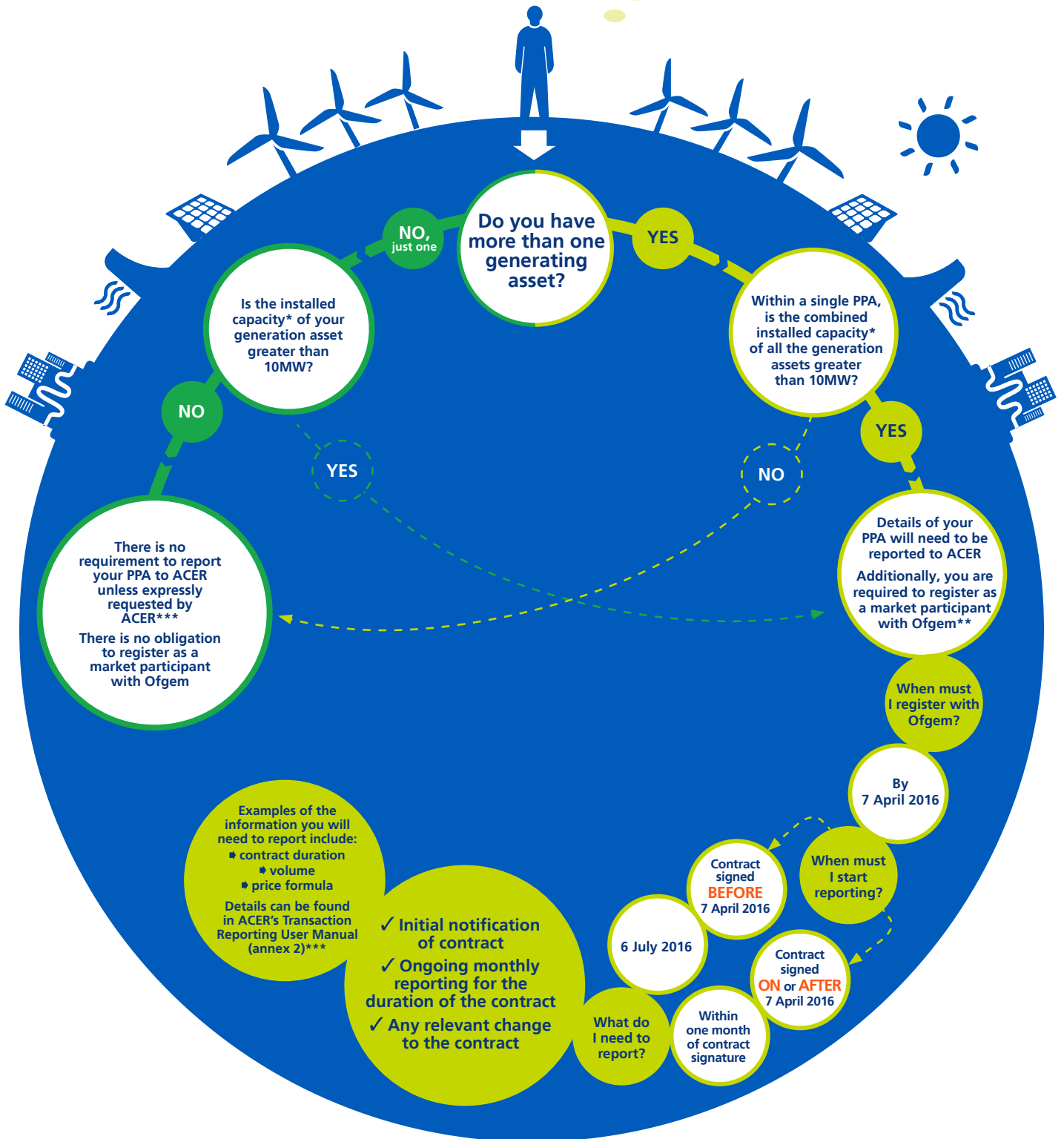


# GENERATORS WITH PPAs

Does REMIT affect me?...



\* Installed capacity is the maximum MW name plate rating of your generating asset

\*\* Details on the registration process, including the information that needs to be registered, can be found in Ofgem's REMIT Registration FAQ and Registration User Guide:

<https://www.ofgem.gov.uk/electricity/wholesale-market/european-market/remit/registering-market-participant-under-remit>

\*\*\* Information on REMIT transaction reporting, including ACER REMIT FAQs, are available on ACER's REMIT web portal:

<https://www.acer-remit.eu/portal/home>