



# Building an Electric Britain

Hinkley Point C Socio-economic  
and Environmental  
Impact Report 2026

# Contents

## INTRODUCTION

- 05 Foreword
- 06 Executive summary

## PEOPLE

- 10 Investing in our community
- 22 Building skills for energy security
- 42 Inspiring the next generation
- 46 Supporting people into better jobs

## PROSPERITY

- 50 A catalyst for growth
- 52 Built in Britain
- 54 Supporting local suppliers

## PLANET

- 59 Protecting the environment
- 61 Reducing our impact
- 64 Helping nature thrive



Cover shows Isabella Noble from Weston-super-Mare, a former apprentice and now Project Manager.



# Foreword

Global energy instability resulting in rising oil and gas prices has shown again how important Hinkley Point C's home-grown electricity is for Britain. Our reliable nuclear electricity will reduce the need for imported gas and help to make an electricity system with renewables more reliable and affordable. We will help people electrify their lives at home and work.

Building an Electric Britain has other big benefits and this report highlights many of them. We've worked hard to make sure we can change lives for the better by providing new skills and jobs here in the South West and right across the country. We set out ambitious targets for jobs and training, and we've exceeded them. The decision to go ahead at Sizewell C means even more opportunities for the people, industry and businesses that support us.

While most people living locally say they feel the benefits of our project, we don't take their support for granted. The Hinkley Point C Community Fund has supported many inspiring initiatives which show the vitality of communities and people. As I prepare to move on from the project, I am proud to see what we have achieved and I look forward to the completion of a power station that is helping to build a more secure, more prosperous and more sustainable Britain.

**Stuart Crooks CBE**  
Chief Executive Officer, Hinkley Point C



# Executive summary

Hinkley Point C's home-grown electricity will provide Britain with energy security for decades to come, meeting around 10% of the country's current electricity demand. Electrifying Britain with nuclear power and renewables means that we'll be less dependent on imported oil and gas. The transition to clean, low-carbon energy will also help to combat the significant environmental impacts of climate change.

Now at the peak of its construction, Hinkley Point C is providing many more benefits beyond the huge amounts of reliable electricity it will produce. The project's commitment to maximising its positive impact

for people, skills and the economy is providing growth across Britain.

The project is also a catalyst for further growth with people and businesses now able to apply their nuclear expertise and learning at Sizewell C and on future small modular reactor projects.

This report demonstrates the wider benefits provided by Hinkley Point C in the three key areas essential for sustainability – people, planet and prosperity.

The transition to net zero is the economic opportunity of the century, one which will bring significant benefits for households, communities, businesses and the economy through good jobs, growth, energy security and lower bills.

The UK's Modern Industrial Strategy, November 2025



We are delivering a new golden age of nuclear and Hinkley Point C will play a key part in this, boosting Britain's energy security with clean, homegrown power.

Hinkley Point C is driving investment in Somerset, while supporting a new generation of skilled nuclear workers to power Britain and deliver our clean energy mission.

**Lord Patrick Wallace**  
Minister for Science, Innovation, Research and Nuclear

PEOPLE

**19,500**

people trained at Centres of Excellence so far

**£24 million**

invested in education, training and skills

**£28 million**

of direct and indirect grants for local projects through the Hinkley Point C Community Fund

**1,740 apprentices**

have been trained – exceeding a target of 1,000

PROSPERITY

**64%**

of the value of Hinkley Point C will go to British suppliers

**£13.3 billion**

of Gross Value Added to the British economy every year

**£5.4 billion**

has been spent with South West businesses

**26,000**

jobs supported across the country during peak construction

PLANET

**10%**

of the UK's current electricity provided for 60 years

**600 million**

tonnes of CO<sub>2</sub> avoided throughout operation

**65,000**

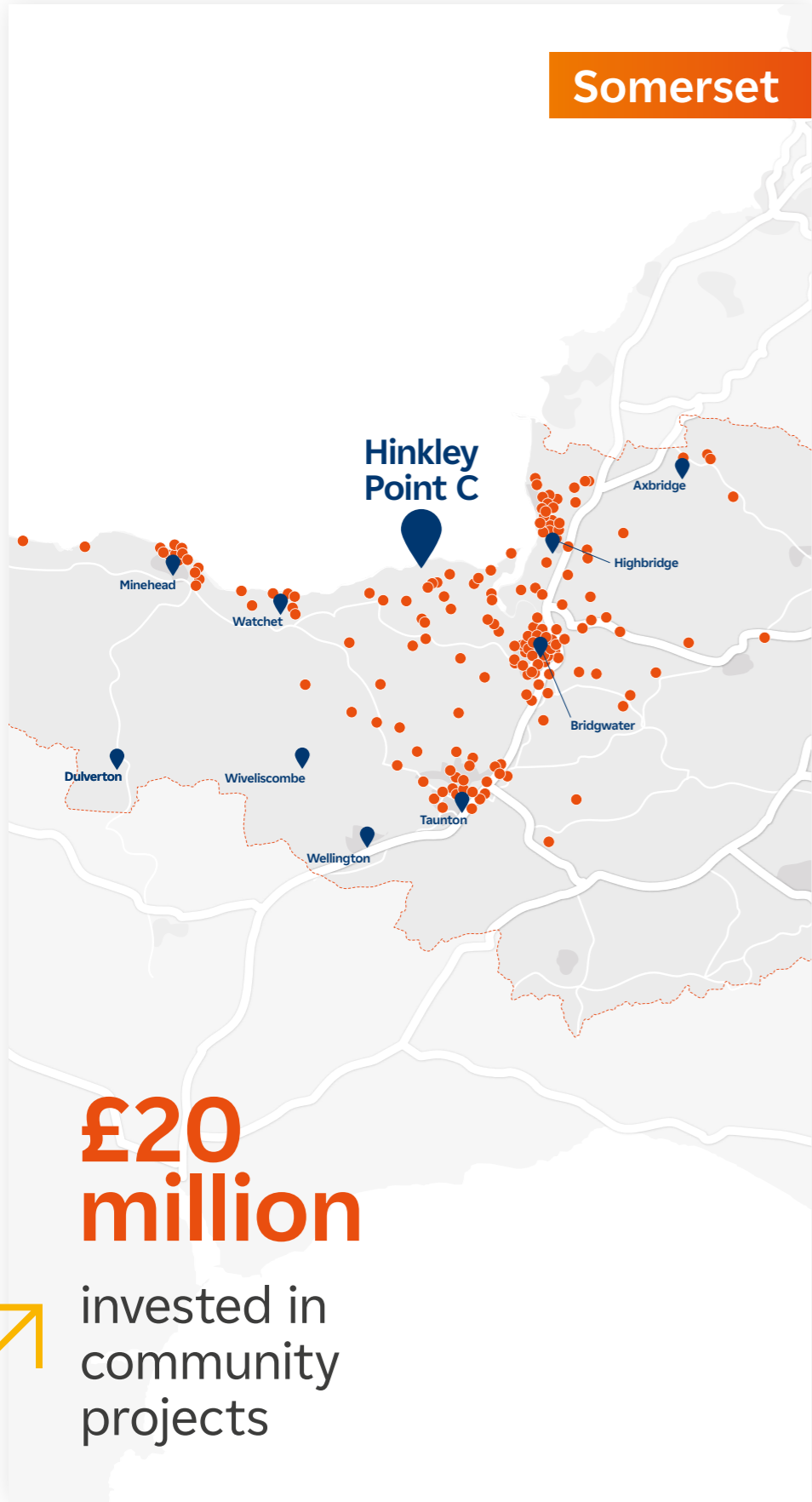
trees planted around the construction site

**98%**

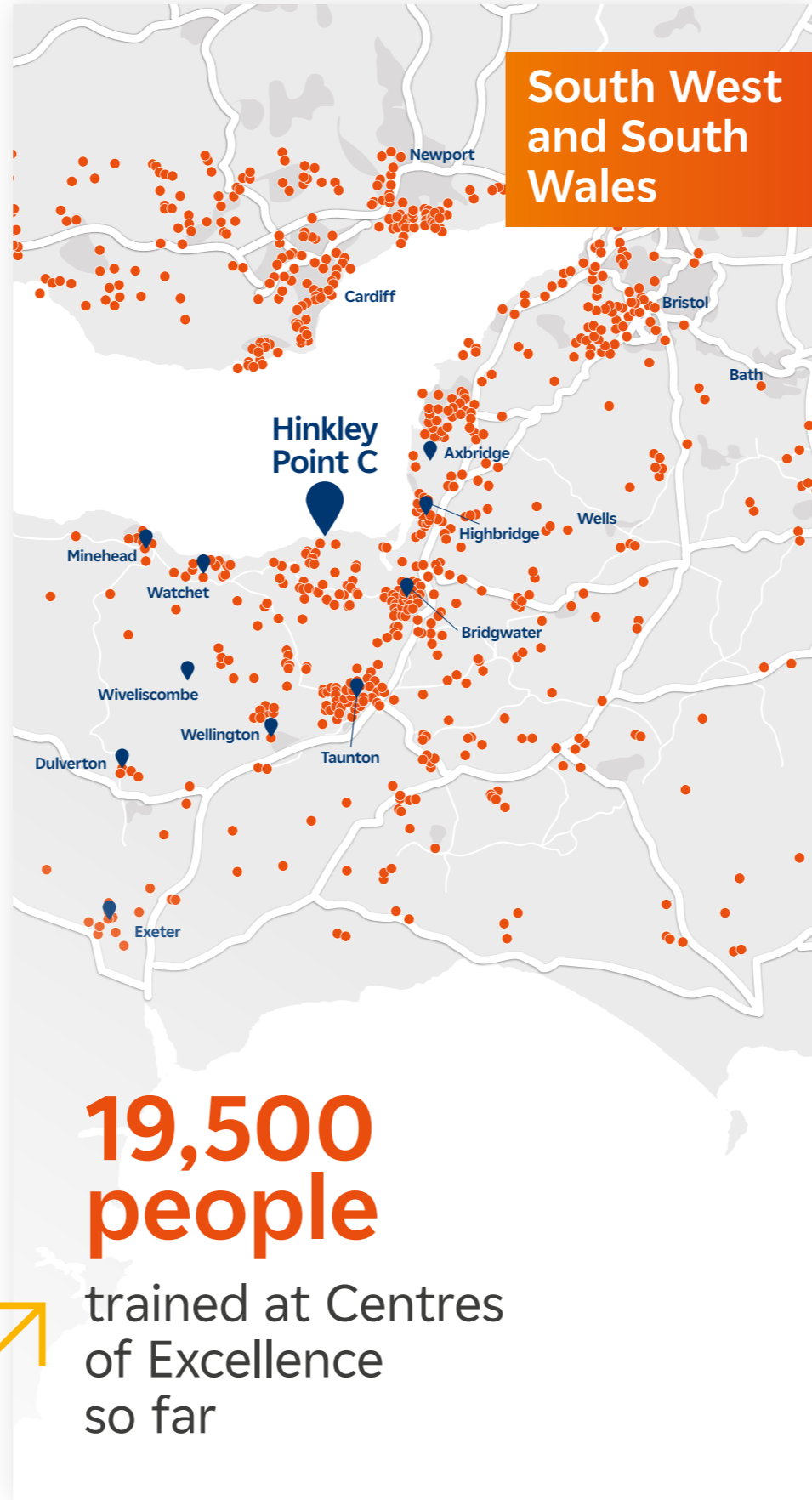
recycled steel for construction sourced in Britain

# Hinkley Point C's positive impact across Britain

## Somerset



## South West and South Wales



## Britain



# Investing in our community

Building one of Europe's largest energy projects in the heart of Somerset is only possible with the support and understanding of our local community.

With the project at the peak of construction, the commitment to minimise local impact remains a priority and one which is taken very seriously.

Minimising impact also means maximising the positive benefits of the project and in combination with the Hinkley Point C Community Fund, the project continues to prioritise the opportunities for local people and businesses.

**£170 million**

of total support to mitigate local impact and build opportunities

**Free**

Community bus connecting Somerset's rural areas

**£20 million**

provided to local projects through the Community Fund

**66%**

of local people support the construction of Hinkley Point C

**£8.4 million**

of extra investment driven by the Community Fund

**385 projects**

and organisations supported so far



**610,000 people**

have benefited from the fund

## Hinkley Point C Community Fund - A long-lasting investment in Somerset

Hinkley Point C's Community Fund is helping thousands of people close to the construction site to respond to change, build long-term resilience and take advantage of the significant opportunities made available by the project. The support is making a positive difference today but also creating lasting community benefits that will continue well beyond the construction period.

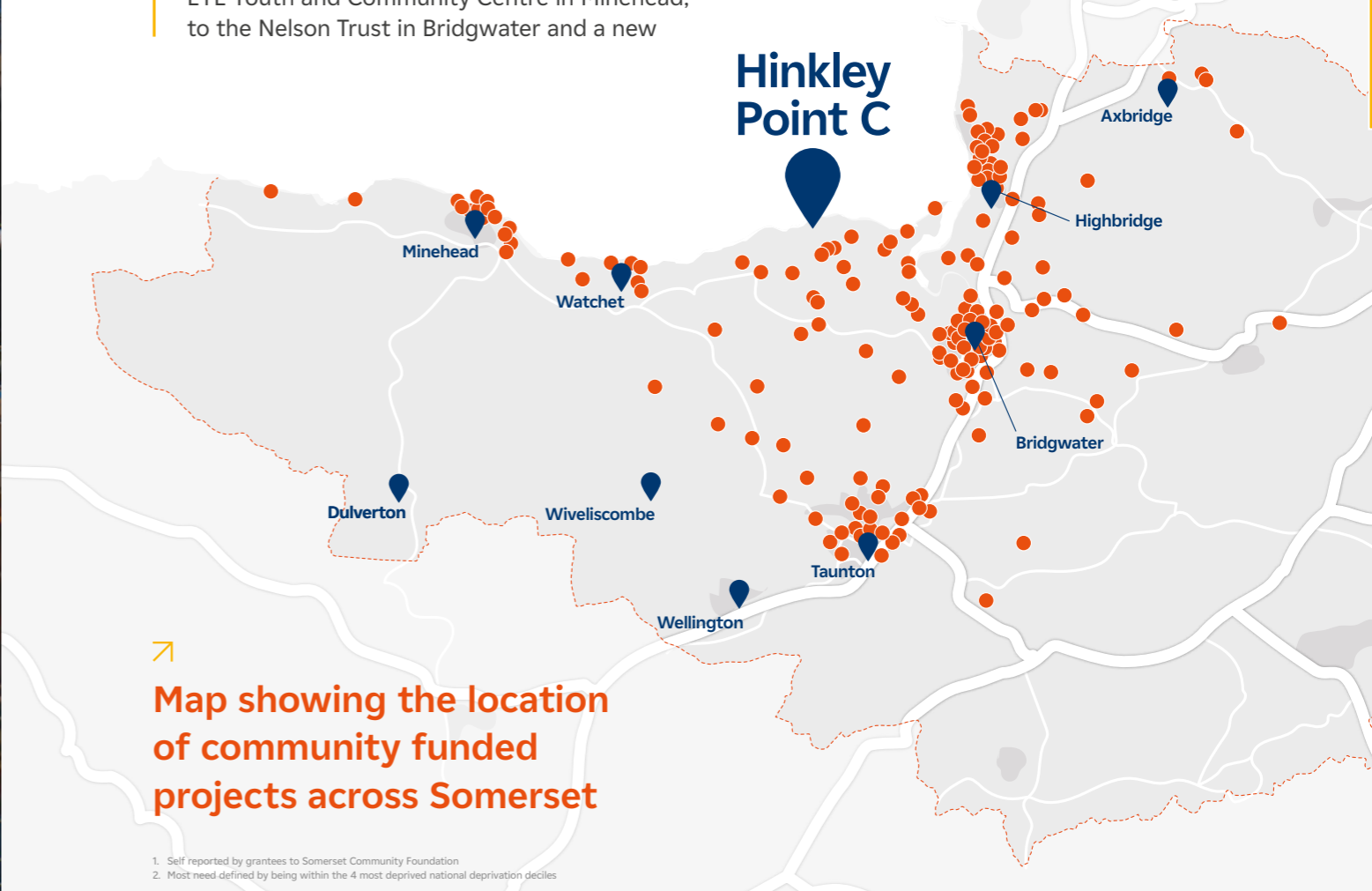
Support for local organisations began when preparations for Hinkley Point C started in 2012 and has been administered by the Somerset Community Foundation since 2017. In total, the Community Fund has now provided £20 million to local people and projects, with the Somerset Community Foundation alone providing 384 individual grants across Somerset. Over the years of construction so far, awards have ranged from small £1,000 contributions to major strategic investments of over £1 million.

Stretching across the county and supporting a large variety of projects, such as the Minehead EYE Youth and Community Centre in Minehead, to the Nelson Trust in Bridgwater and a new

Community Pavilion in Cheddar, 610,000<sup>1</sup> people have seen the benefits. The fund is also a catalyst for further investment with at least £8.4 million generated for the area in match funding.

70% of total funding has gone to people within areas of noted economic and social challenge, with annual incomes of recipients around £24,000. Investment has also reached both urban and rural areas, with 43% of grants supporting rural communities, including the parishes closest to the construction site.

In the years ahead, the fund will broaden from a focus on community cohesion and social impact to considering projects that will provide a longer-term legacy for local communities - building infrastructure and social structures that will remain as the power station moves into operation.



Map showing the location of community funded projects across Somerset

<sup>1</sup> Self reported by grantees to Somerset Community Foundation  
<sup>2</sup> Most need defined by being within the 4 most deprived national deprivation deciles



The Hinkley Point C Community Fund is delivering against the United Nations Sustainable Development Goals

10 REDUCED INEQUALITIES



11 SUSTAINABLE CITIES AND COMMUNITIES



31% of funding

69% of funding

The Hinkley Point C Community Fund continues to award grants to communities experiencing changes brought about by the construction of Hinkley Point C.

**The fund seeks to improve the quality of life and wellbeing in those communities, while helping local people to make the most of the opportunities created by the project.**

Justin Sargent OBE DL  
Chief Executive, Somerset Community Foundation



“Wilstockhub represents far more than a building. It responds to a clear and enduring need – a place to gather, grow and support one another. Hinkley Point C Community Fund investment underpins a sustainable, community-led asset that will generate social, economic and environmental value well beyond the construction phase, creating a lasting legacy for generations to come.”

Wilstockhub will be a welcoming and inclusive space for all – nurturing wellbeing, improving access to services and opportunities, reducing social isolation and strengthening the connections that enable communities to thrive.”

Cllr Lucinda Spelman-Ives  
Wilstockhub Trustee



grant from the  
Community Fund

£850,000

## Wilstockhub

Wilstockhub started as a grassroots community initiative in Somerset, driven by local residents who felt their new housing area near North Petherton lacked basic facilities and a sense of community.

Since 2018, the Hinkley Point C Community Fund has played an important role in supporting the project which aims to build a multi-use community hub offering social and leisure activities, health and wellbeing services and opportunities for education and skill-sharing.

Designs include a hall, meeting rooms, nursery provision, a café and outdoor spaces such as a community garden and games area, supporting a wide range of activities and services. It also incorporates sustainability, including solar panels, rainwater reuse and biodiversity-focused landscaping. It has plans to generate income and become financially sustainable.



## Fuse Somerset Outdoor Arts

A grant of £4,700 supported a community arts event in Bridgwater, delivered by Fuse Somerset Outdoor Arts. Fuse produces festivals and events across Somerset, bringing communities together through art, performance, parades, workshops and cultural celebrations.

Fuse works with communities, artists and partners to create shared cultural experiences that animate public spaces and enrich local life. These events support participation from a wide range of ages and backgrounds while providing opportunities for artists to develop, collaborate and showcase their work.

£4,700

grant from the Community Fund

grant from the  
Community Fund

# £65,000

## Bridgwater Tennis Club

More than £65,000 has been awarded to Bridgwater Lawn Tennis Club since 2023, including a £50,000 grant to replace two clay courts with an all-weather surface.

▾ This upgrade extends the playing season into winter months, reduces maintenance requirements and bolsters the club's long-term sustainability. The new surface also provides space for pickleball, a low-impact racket sport accessible to a wide range of ages and abilities.

Carole Beach said: "We're very grateful for the significant grant towards two new courts which can be played on all year round and after heavy rain. With the proposed addition of floodlights, this will greatly extend what we can offer the local community."



We're very grateful for the significant grant towards two new courts which can be played on all year round

## St Margaret's Hospice

A grant of £132,000 is allowing St Margaret's Hospice to fund a community nurse, bringing care to patients in villages near Hinkley Point C.

Home visits from nurses provide pain management, referrals and emotional support, reducing the need for patients with life-limiting illnesses and their families to travel long distances for care.

This at-home care allows patients to remain in familiar surroundings, preserving comfort and dignity while easing the emotional burden on loved ones.

Liam Cottrell, Grants and Major Gifts Manager, said: "We're deeply thankful for the generosity of the Hinkley Point C Community Fund. Without funding like this, it just wouldn't be possible for us to care for the 5,000+ people in our community whose lives we touch each year."



We're deeply thankful for the generosity of the Hinkley Point C Community Fund

£132,000  
grant from the Community Fund



£46,000  
grant from the Community Fund

## Victoria Park Community Centre, Bridgwater

A grant of £46,000 is helping Victoria Park Community Centre in Bridgwater to modernise its facilities and secure its long-term role as a community hub. Opened in 2007, the fully accessible centre offers activities for all ages, including yoga, support meetings, baby and toddler sessions, a café and clubs for older adults. With more than 1,000 people attending each week, the investment strengthens long-term community wellbeing and social value.

The funding enables investment in staff and facilities, including reinvigorating the youth club, upgrading café equipment, supporting the lunch club, and providing soft play for young children.

Centre Manager Laura Fowler said: "The community centre is well-used, with a welcoming atmosphere. These improvements will create a lasting legacy, supporting a wider range of users, maintaining current services, and future-proofing the centre for years to come."

# Maintaining support and limiting disturbance

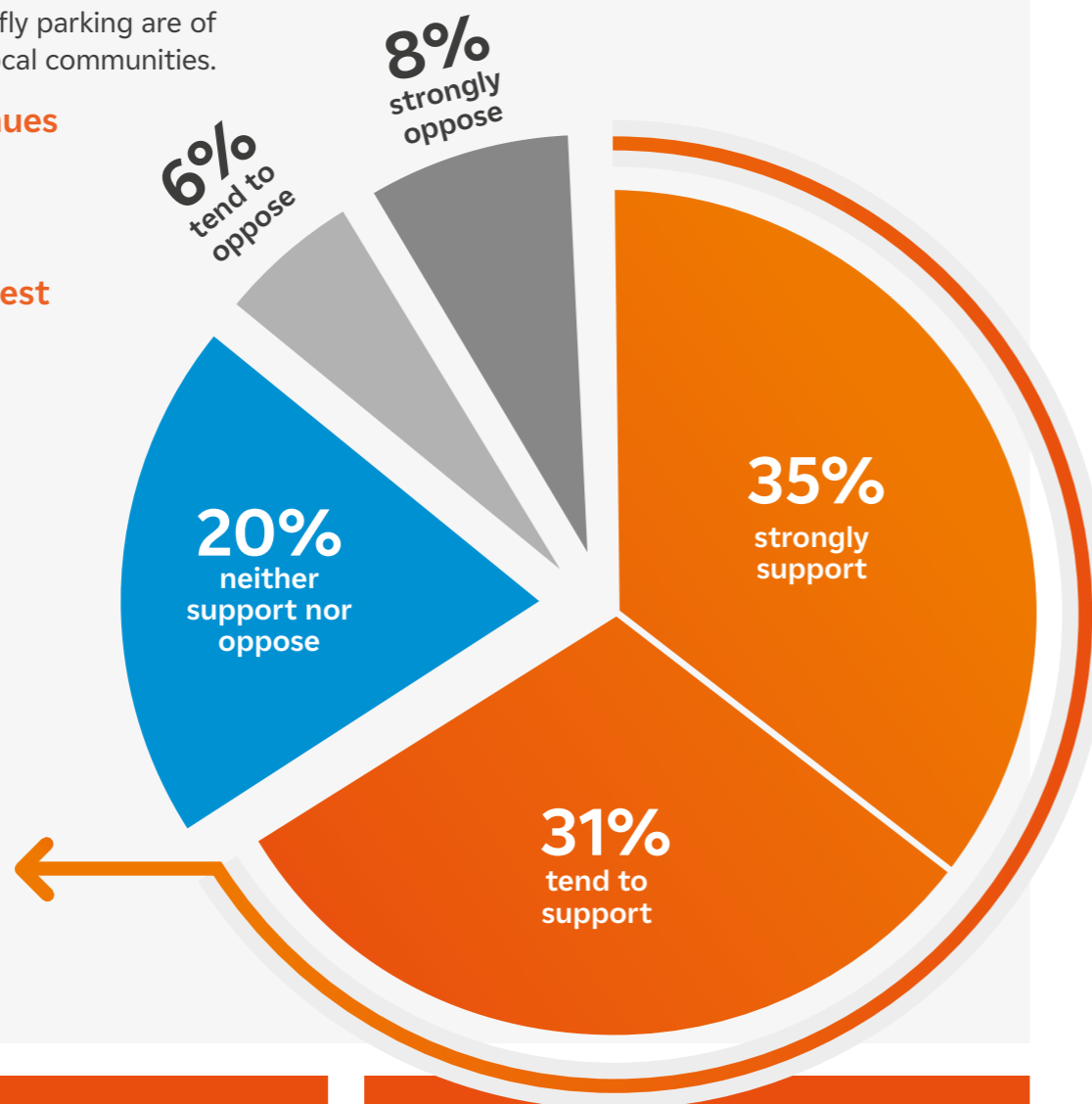
Two-thirds of the local community support the construction of Hinkley Point C, with more than three-quarters agreeing it has boosted the local economy, provided new jobs and opportunities, and helped young people get into work.

We also understand that increased traffic, the affordability of accommodation, and parking issues such as fly parking are of most concern to our local communities.

The project continues to track concerns and reduce the impact of a large project to the lowest level possible.

**14%**  
oppose construction of Hinkley Point C

**66%**  
support construction of Hinkley Point C (65% in 2024)



**89%**  
of local people agree that the project is creating new jobs and training opportunities

**80%**  
of local people agree that the project is bolstering the country's energy security

# Adapting to a larger workforce

Hinkley Point C will continue expand its community support as the workforce on-site reaches its peak. With an expected additional £30 million boost to mitigation funding, the total invested will reach £170 million. The new funding will support all aspects of the community, from the delivery of increased accommodation to a new fund for road improvements and increased healthcare, helping to reduce the need for the workforce to use local facilities.

Above all, Hinkley Point C will continue to listen to local communities through forums focusing on different subjects and geographies. The Community Forum, Transport and Main Site Forum make sure that concerns are heard and positive changes are taken forward.



# Building skills for energy security

**19,500**

people trained at Centres of Excellence and the National College for Nuclear

**£60 million**

of additional inward investment in skills generated by Hinkley Point C

**1,740**

apprentices trained at Hinkley Point C so far

**£2.8 million**

provided by Hinkley Point C from the growth and skills levy to support smaller businesses to train apprentices

**£24 million**

invested directly into education, skills and employment by Hinkley Point C

**£3.25 million**

reinvested from the ECITB levy to support local training providers, facilities and equipment



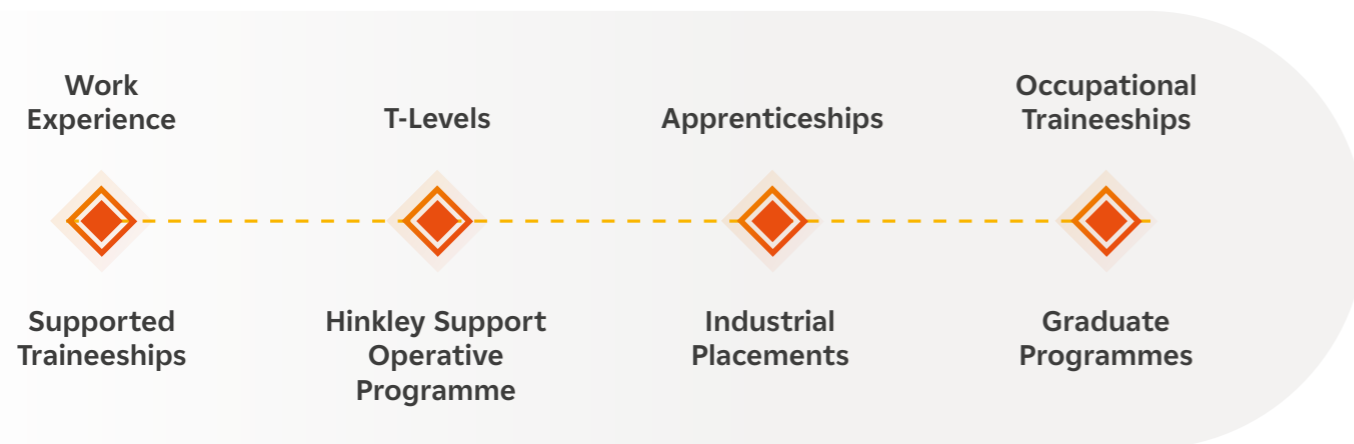
People across Britain are benefiting from the higher skilled, higher paid jobs created by Hinkley Point C, which is helping to boost regional growth and improve productivity.

These opportunities are improving social mobility and addressing national skills shortages in construction, science, technology, engineering and mathematics.

This progress is driven by accessible training programmes that open doors for people of all ages, backgrounds and levels of experience. Engagement begins in schools through the Inspire Education and Young HPC programmes, continuing into diverse training pathways that support long-term careers. By helping students move from the classroom into the workplace, expanding apprenticeships, and supporting local people into employment, these initiatives are raising aspirations and improving socio-economic outcomes in some of the UK's most deprived communities.

Hinkley Point C has invested £24 million into education, skills and employment. This includes creating three Centres of Excellence, the Construction Skills and Innovation Centre, and indirect support for the National College for Nuclear. In partnership with Bridgwater & Taunton College, these modern facilities and career pathways supply the project's workforce and tackle national skills gaps in key trades and industries.

## Hinkley Point C provides a range of training opportunities



# Centres of Excellence

19,500 people have now been trained at Hinkley Point C's Centres of Excellence. Training is focused on areas of national skills shortage with courses welcoming people from all backgrounds and skill levels - from entry level multi-week courses to four-year degree apprenticeships.

The training has helped them to access higher-skilled, better-paid roles at Hinkley Point C whilst putting the region in a prime position to attract future inward investment in high growth sectors as has been seen through the development of the country's largest battery production facility in Bridgwater.

# 19,500

trained at  
Hinkley Point C's  
Centres of  
Excellence



Map showing the location of people being trained at Centres of Excellence



### Electrical Centre of Excellence

The Electrical Centre of Excellence, based in the Somerset Energy Innovation Centre in Bridgwater, trains the skilled workforce for the mechanical and electrical installation phase of Hinkley Point C. It delivers a broad range of training, including the Hinkley Support Operative programme.



### Mechanical Centre of Excellence

Located in Cannington, the Mechanical Centre of Excellence is the newest training facility supporting Hinkley Point C. It focuses on developing mechanical engineering skills needed for the power station's fit-out. The centre delivers training in key mechanical trades such as pipefitting, steel erection and plating.



The Centres of Excellence have  
**helped to train  
1,740 apprentices**

### Construction Skills and Innovation Centre

The Construction Skills and Innovation Centre was established in 2015 to help meet early construction labour demands. Created through a £1.5 million investment from Hinkley Point C, it now serves as a training hub offering a realistic environment where students can gain practical experience in key trades.



### Welding Centre of Excellence

The Welding Centre of Excellence in Bridgwater offers extensive training to support the large number of welders required for Hinkley Point C's fit-out. Its programmes cover everything from core welding skills to advanced techniques used in nuclear quality fabrication.



### National College for Nuclear

Run by University Centre Somerset College Group with support from Hinkley Point C, the National College for Nuclear in Cannington provides specialist training for the UK's nuclear industry. It offers a wide range of technical education routes, from entry level programmes and apprenticeships through to degree level qualifications.



Our continued partnership with Hinkley Point C is a unique example of industry education collaboration that is providing lasting social and economic benefit to the region and to the country as a whole. As we look to the future, it is clear that the South West stands out as a leader in nuclear and engineering excellence - perfectly poised to deliver the projects of the future.

**Andy Berry CBE**  
CEO UCS College Group

# Apprenticeships

Apprenticeships remain at the heart of our training options and are designed to be accessible to everyone. **68% of apprentices are from the South West with an increasing number of them being women.**

The number of apprentices trained at Hinkley Point C has exceeded the original target of 1,000. So far, 1,740 apprentices have been trained, putting them in prime position to move into operational roles at Hinkley Point C or support future nuclear projects like Sizewell C.

**21%**

↗ of apprentices are women

**68%**

↗ of apprentices are from the South West

**70**

↗ different types of apprenticeship available



“Before joining the project, I was a stay-at-home mum looking to get back into work. I took a job in the canteen at Bridgwater School because it fitted around my children’s school hours, but I wanted something more – something full-time, challenging and exciting.

I first came to Hinkley Point C through the HSO programme, which trains people who want to work as general operatives. It changed my life. I was on site and working hands-on very quickly, and it didn’t take long for me to realise I wanted to build a career here. That’s when I applied for the apprenticeship, with the goal of securing a long-term role once I’ve completed it.

I expected it to be a very male dominated environment, but Hinkley Point C has been incredibly supportive. There’s a strong community of women here, and that made my transition into the industry so much easier. I’ve felt supported every step of the way.”

**Monica Czyzgrzesik,**  
**39, Bridgwater**  
Mechanical Fitting Apprenticeship

PREV. SECTION

HOME PAGE

NEXT SECTION



“It challenges me in all the ways I had been craving”

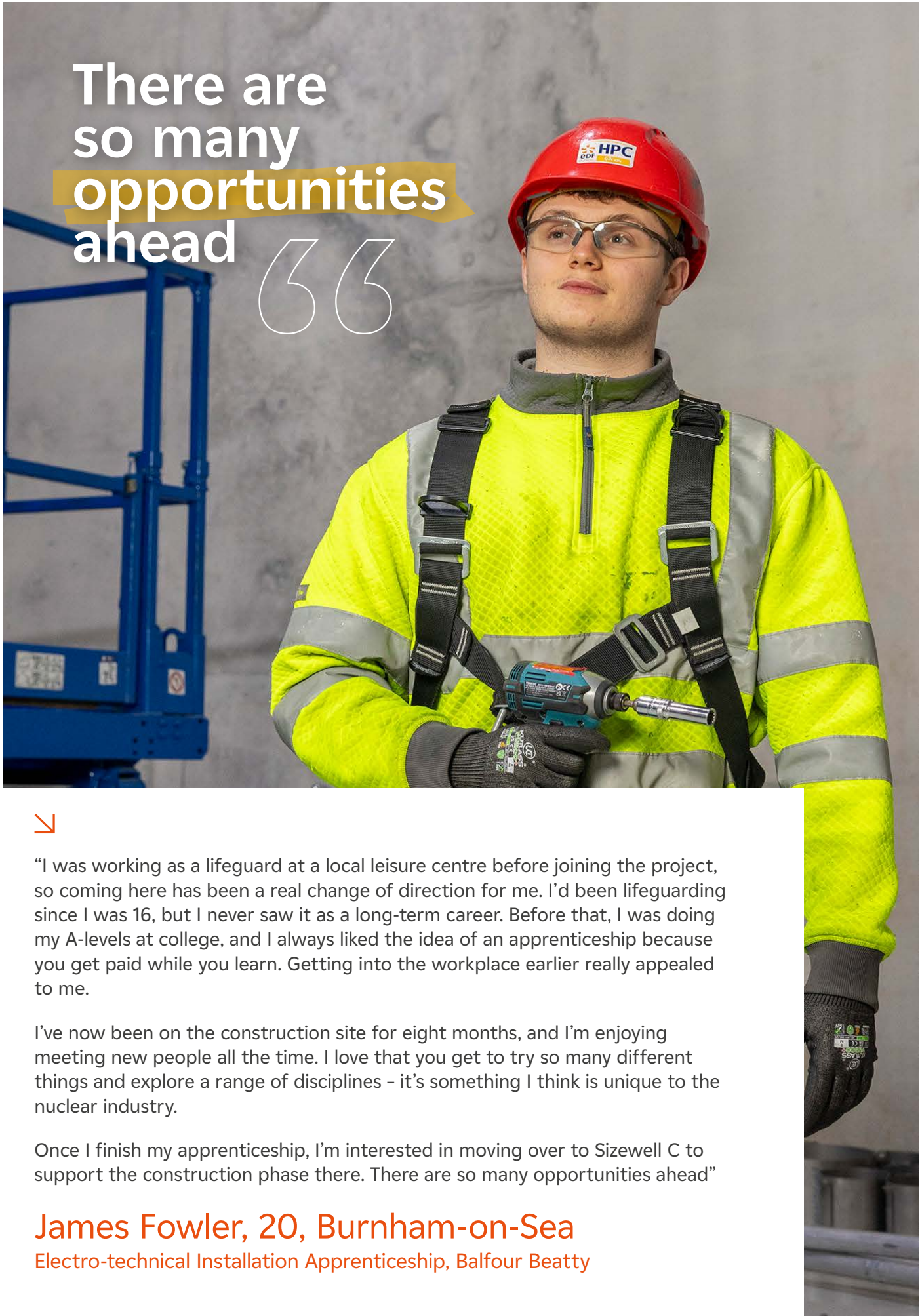


“This apprenticeship has completely changed my working life. Before joining, I was in a dead-end retail job near where I lived. I knew I had more to offer and I was desperate for a change.

One day, I went onto the EDF Job Service website, applied for the apprenticeship - and got it. That really changed everything.

Now, I'm working within the Quality Assurance team, learning how to make sure nuclear specialists follow the right procedures and complete the correct paperwork during construction. My role helps maintain high-quality construction standards, and I find it fascinating. It challenges me in all the ways I had been craving.”

**Jack Davis, 23, Watchet**  
Quality Assurance Apprenticeship



There are so many opportunities ahead



“I was working as a lifeguard at a local leisure centre before joining the project, so coming here has been a real change of direction for me. I'd been lifeguarding since I was 16, but I never saw it as a long-term career. Before that, I was doing my A-levels at college, and I always liked the idea of an apprenticeship because you get paid while you learn. Getting into the workplace earlier really appealed to me.

I've now been on the construction site for eight months, and I'm enjoying meeting new people all the time. I love that you get to try so many different things and explore a range of disciplines - it's something I think is unique to the nuclear industry.

Once I finish my apprenticeship, I'm interested in moving over to Sizewell C to support the construction phase there. There are so many opportunities ahead”

**James Fowler, 20, Burnham-on-Sea**  
Electro-technical Installation Apprenticeship, Balfour Beatty



“it felt like a natural step”



“Before starting my apprenticeship, I was studying maths, physics, design technology, EPQ and robotics at Taunton School. I’d always been around engineering - I worked part time at my parents’ engineering firm, and my dad often took me to engineering events, which really inspired me to pursue this career.

At school, I often felt like the only girl interested in engineering, but instead of putting me off, it motivated me. It’s why I now do STEM advocacy in schools to encourage other girls to explore the field.

I chose a degree apprenticeship because it lets me gain hands-on experience, earn a salary, and work toward a degree at the same time. One of the best parts is rotating teams every six months - it has helped me figure out where I want to specialise.

Hinkley Point C has always been on my radar. I don’t live far away from the construction site, and it’s such a big part of the local area - lots of my friends’ parents work there and it brings so much to the community. So, when the opportunity came up to do my apprenticeship here, it felt like a natural step.

**Sophie Chant, 21, Taunton**  
**Nuclear Engineering Apprenticeship**

# Skills for Sizewell C

Hinkley Point C's training programmes are also supporting people to access careers both in Somerset and across the country. Working with the Sizewell C project in Suffolk, young people from the East of England are also benefitting from the construction of Hinkley Point C.

"hard work is paying off and I was shortlisted for ECITB Apprentice of the Year"

## CASE STUDY

I moved from Suffolk to Somerset for my apprenticeship and currently live in Wincanton. I was always interested in STEM subjects at school and knew I wanted to pursue engineering. When I found out at 16 what apprenticeships were and that it was an option over the traditional university route to achieve a degree, I knew this would be a better route for me as it meant I could learn alongside gaining engineering experience at work.

I have already had the opportunity to work in a variety of teams including commissioning, engineering and pre-operations, as well as a secondment to Sizewell B working in Engineering and Operations. The hard work is paying off and I was shortlisted for ECITB Apprentice of the Year 2025.

**Charlotte Ellis, 21, Lowestoft**

**Fourth-year EDF Mechanical Nuclear Engineering Degree Apprenticeship**

# Training and skills for all

Alongside apprenticeships, Hinkley Point C's other training programmes are helping people living close to the construction site get higher-skilled, better-paid jobs, directly contributing to Somerset and the South West's economic growth.



## Supported Traineeship

The Supported Traineeship is a 16-week programme created to guide and prepare young people with Special Educational Needs and Disabilities or an Education, Health and Care Plan by developing the skills and experience required for work. The traineeship offers varied support and opportunities, helping individuals take their initial steps onto the career ladder at Hinkley Point C or with other local businesses.

## T-Levels

Assists T Level students undertaking an alternative route to A Levels and apprenticeships by offering industry placements. These placements provide guided, hands on experience within the project, helping students build practical skills and confidence while preparing them for future employment opportunities. In 2026, the project is expecting 13 T-Level learners to join in subjects including Accounting, Business, Digital, and Design, Surveying & Planning for Construction

## Hinkley Support Operative

The Hinkley Point C Support Operative Programme delivers a pre-employment training pathway. The Bronze Programme concentrates on establishing health and safety knowledge, giving participants a starting point for careers in construction. Trainees study Engineering Construction Industry Training Board certificated modules on a two-week full-time, or six-week part-time, pre-employment course. Successful candidates can then join the Hinkley Point C project as general labourers and take further training courses.

## Training for more experienced employees

Training routes are also being expanded to ensure more experienced employees can continue to develop skills through a new Experienced Worker Skills Pathway. Hinkley Point C and contract partners have worked to develop these new training routes so that they can be delivered alongside a worker's existing role. The project has already piloted schemes in rigging, pipefitting and plating.



Help on the Supported  
 Traineeship gave me  
**more confidence**  
 than when I  
 started out and  
 more knowledge

↳ SUPPORTED TRAINEESHIP

Mathew completed the Hinkley Point C Supported Traineeship in 2025 with his eight-week placement with Turnbull as a Support Service Administrator.

The Supported Traineeship interested Mathew as he saw the opportunity to get work experience through the programme to learn the skills needed for work.

Mathew particularly enjoyed the placement and the teaching, saying, "The learning, teaching and people helped me learn more about myself".

Matt's confidence in office work has grown and he was awarded Employee of the Month at Turnbull during his placement. Andrew Claydon, Mathew's job coach said that his "Work ethic was second to none".

Now, after completing an admin placement, he has decided that this is the direction he would like to pursue.

**Mathew Williams, 19, Bridgwater**  
 Supported Trainee



↳ EXPERIENCED WORKER PROGRAMME

Chris is currently moving through the Trainee Rigger course which will see him gain a Level 3 Diploma and become a fully qualified rigger, a key specialism that supports the safe lifting and positioning of heavy materials across the construction site.

Before joining Hinkley Point C, Chris was a HGV driver but was made redundant during the pandemic. He learned about Hinkley Point C from a friend and initially completed a Slinger and 360 Telehandler courses. He secured a job with BYLOR and has already worked on the project for four years.

Chris had an interest in rigging, so as the main civil work approached completion, he saw the opportunity to re-train and upskill once again. Once the project comes to an end, Chris will have a qualification that can be used across multiple industries.

**Christopher Tubman, 56, Manchester**  
 Trainee Rigger

Even at  
 56, I am  
 pushing  
 to better  
 myself

# Inspiring the next generation

Hinkley Point C's Inspire Education programme is providing support for schools across Somerset with activities, events and experiences that are designed to open up the world of energy, construction and engineering to the next generation.

Alongside visits to the Hinkley Point C construction site, the team delivers STEM focused workshop days built around science, technology, engineering and mathematics challenges. The outreach team also visit local schools to run practical engineering sessions, offering hands-on learning that has motivated many of today's apprentices to pursue careers at Hinkley Point C.

For Somerset residents aged 16-21, the Young HPC programme provides an additional route into the project. Members can attend free in-person events, take part in informative webinars, and access exclusive site tours. The programme also shares the latest apprenticeship openings and job opportunities available across Hinkley Point C.

In 2025 over 5,000 young people were engaged as part of the project's education programmes with the number registered as part of Young HPC increasing to 1,240.

1,240

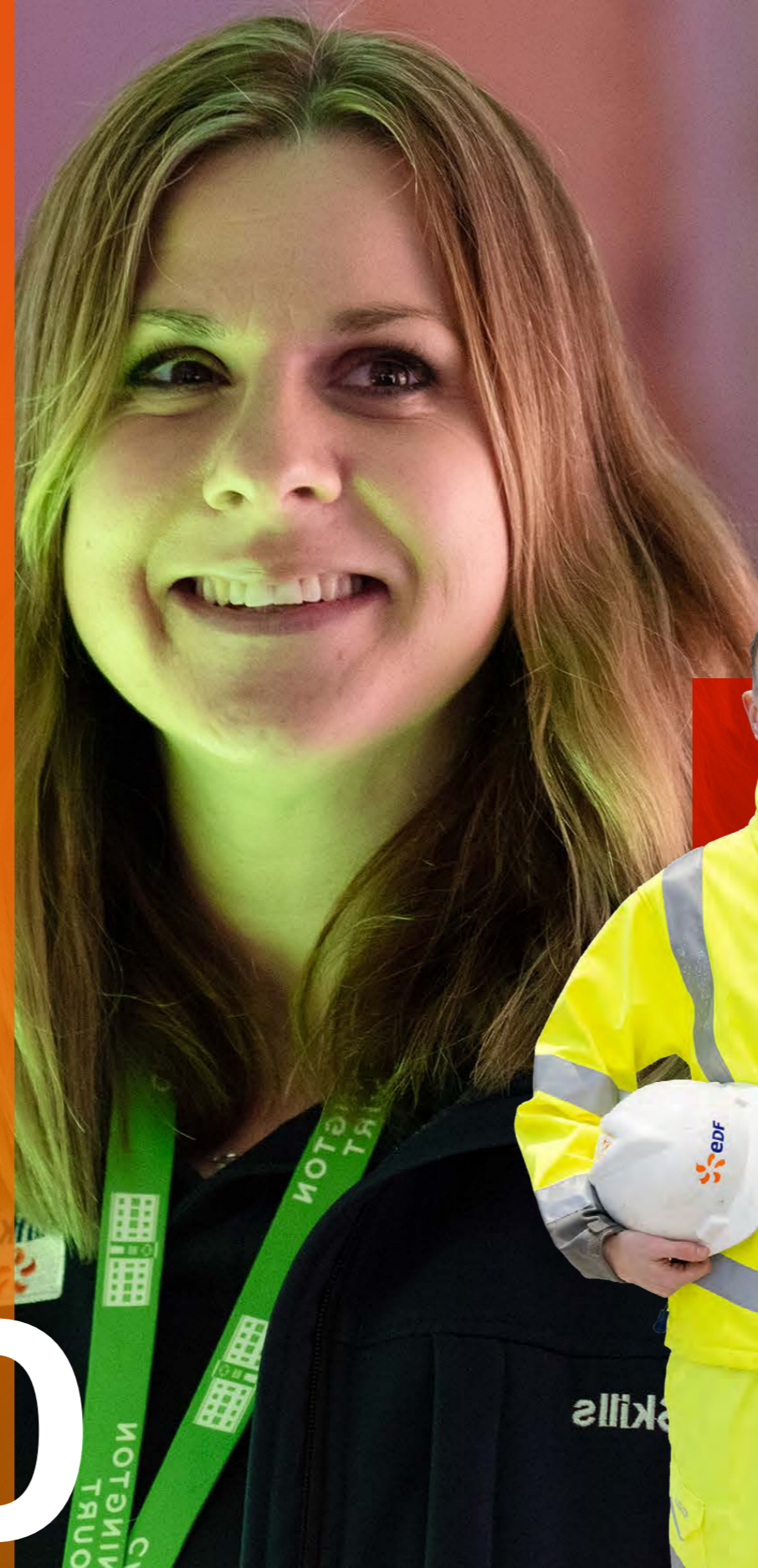
people now part of the Young HPC Programme

88

school engagement events delivered in 2025

5,000

young people engaged in school events in 2025



## beginning of an exciting career

### YOUNG HPC

"My interest in nuclear began during a 2018 school trip to Hinkley Point C, where the scale of the project really struck me. A careers advisor then pointed me towards Young HPC, which introduced me to the sector and the opportunities available. Through their events, I learned about the National College for Nuclear in Cannington and went on to complete a two-year Extended Diploma in Engineering.

While studying, I applied for the Nuclear Engineering Degree Apprenticeship. I started in 2021, completing the four-year programme last year - earning a fully funded degree and gaining hands-on experience across different parts of the business.

A highlight was moving to Lancaster for a placement at a nuclear power station there. Living in a completely different part of the country pushed me to grow personally as well as professionally.

I'm now working full-time on the project; I hope to stay at Hinkley Point C and be part of bringing it online. Young HPC's support towards an apprenticeship really was the beginning of an exciting career."

**Max Boseley, 24, Highbridge**  
Operational Development Engineer

# BBC BITESIZE

## BBC Bitesize National Careers Tour

The project supported the 2025 BBC Bitesize National Careers Tour with current Hinkley Point C apprentices bringing a behind the scenes look at the opportunities available in the nuclear industry. Overall, the tour visited over 110,000 secondary school students across the UK with the project supporting the Somerset based event. The topics included relatable advice on relevant qualifications, career progression, advice on work experience and what it's like to work on such a large project.

## Increasing school capacity: Northgate Primary School

At the start of Hinkley Point C's construction the project provided £1.3 million to support the construction of a new primary school for Bridgwater. Northgate Primary School opened in 2017 and since then has benefitted from further funding from Hinkley Point C to pay for play equipment and landscaping. More recently the school was recognised by Education Secretary Bridget Phillipson for delivering some of the best outcomes in the country for disadvantaged pupils.





PEOPLE

# Supporting people into better jobs

26,000

direct and indirect jobs supported across Britain

40,000

local people supported via the Jobs Service since 2021

97

employment events held or attended in 2025

34%

of Hinkley Point C's workforce are local

## Hinkley Point C organises regular recruitment events to support local people into available opportunities

# The Hinkley Point C Jobs Service

Based in Bridgwater, the Hinkley Point C Jobs Service team is focused on supporting local people into work. The team organises outreach and recruitment events across Somerset whilst also providing advice on career options and CV writing.

The Service works in partnership with Jobcentre Plus and Somerset Council to help people into work, regardless of their background or current skills. Almost 100 events were held or attended in 2025 with the focus on local employment, maintaining the project's target of ensuring one-third of the workforce are from the local area.

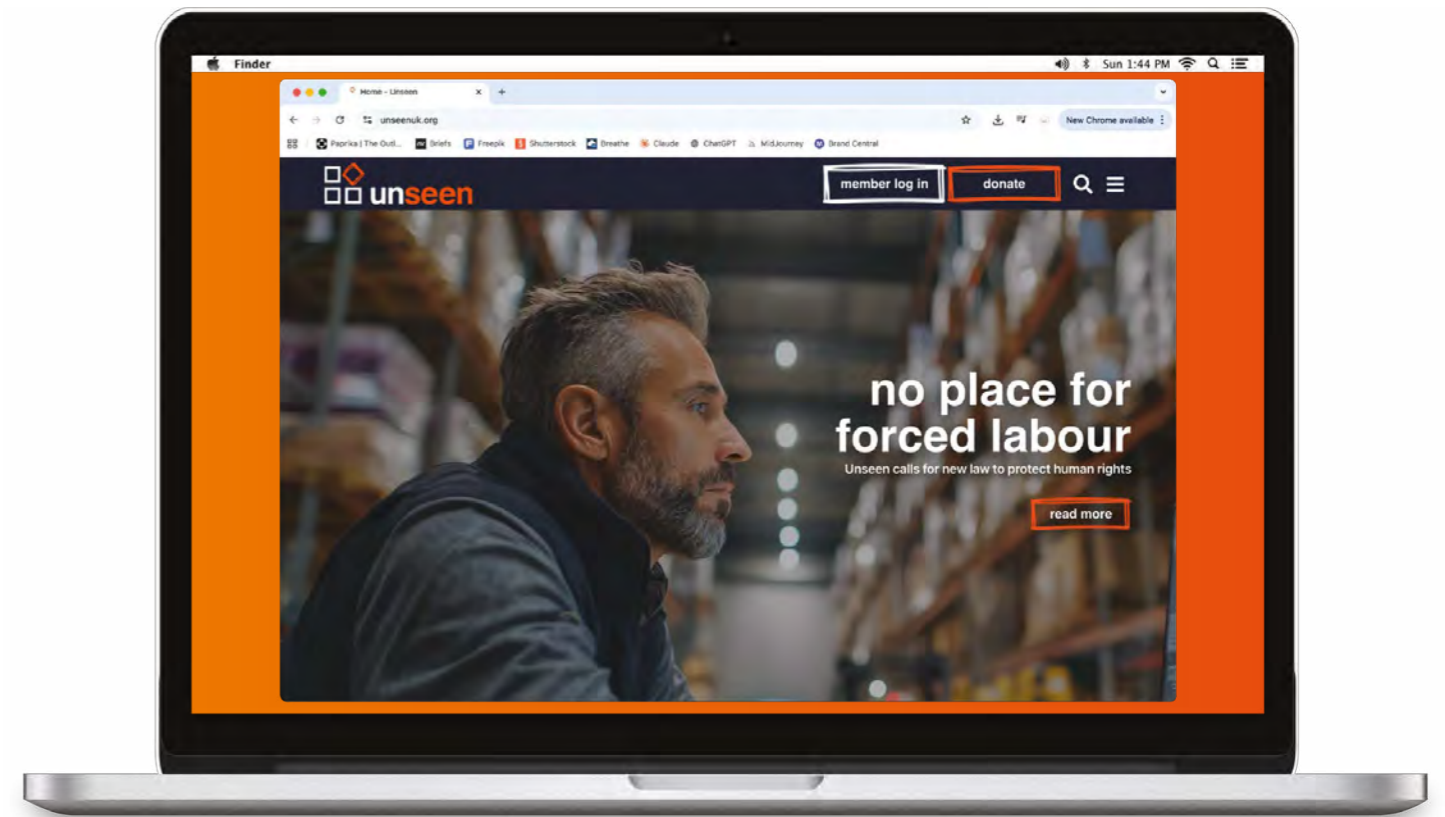
The team have also continued a partnership with the Somerset Business Agency in 2025 to help those struggling to make the leap from unemployment into the world of work.

↳ **Matching people**  
to available jobs at Hinkley Point C

↳ **Providing targeted support**  
for local people looking for careers advice

↳ **Arranging and attending events**  
to raise awareness of opportunities

↳ **Working in partnership**  
with Somerset Council and Jobcentre Plus as part of the Somerset employment hub network.



## Combating modern slavery

Construction holds some of the highest risks of modern slavery of any sector. This is why the project is practising measures to protect people and our suppliers from the harm caused by worker exploitation. They include awareness campaigns, training and auditing of the supply chain.

The project works with Unseen, a prominent modern slavery charity. The partnership has led to a Hinkley Point C training course that is mandatory for EDF employees and shared through the supply chain. The course helps staff spot and report modern slavery or worker exploitation. Project wide awareness is also furthered via "Lunch and Learn" sessions and daily safety messages to the project's 14,000-strong workforce.

# A catalyst for growth

Hinkley Point C is delivering significant economic benefits for the UK, helping to strengthen national energy security, create thousands of skilled jobs and build a supply chain with the **capability to support the critical infrastructure of the future.**

In support of the UK Industrial Strategy, the project provides high quality employment in high growth sectors such as advanced manufacturing and clean energy. The expertise being developed in Somerset and the South West will replicate success at future nuclear developments, such as Sizewell C and Wylfa in North Wales.

Data shows that the area surrounding the power station is experiencing a positive economic change. Once viewed as remote, with limited job prospects

and an ageing population, the area is now seeing growth in productivity and a rise in skilled, well paid employment. There is also evidence to show the trend of young people leaving the areas closest to the Construction has shifted - in the former district of Sedgemoor, the number of residents aged 25-39 has increased by almost 50%<sup>1,2</sup>. Employment in advanced manufacturing is more than one third higher than the rate across England, and jobs in clean energy industries are growing at nearly three times the national average.

In the town of Bridgwater, local employment has grown by 28%, and the number of large businesses operating in the area has doubled. £5.4 billion has already been spent with suppliers in the South West.

**4,900**

British businesses have played a role in the supply chain

**26,000**

direct and indirect jobs supported across Britain

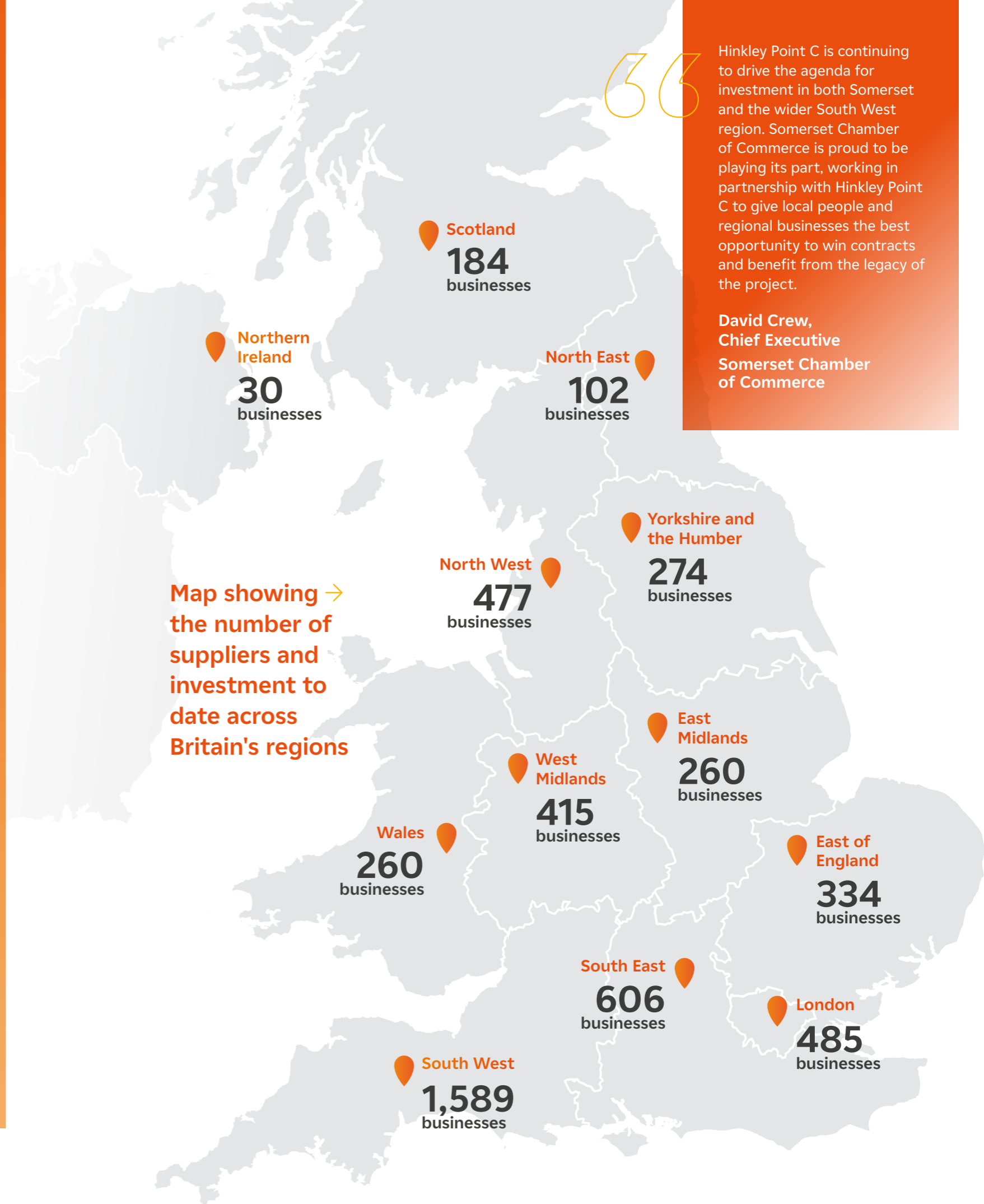
**64%**

of the value of Hinkley Point C will be with British businesses

**£5.4 billion**

spent with South West businesses

1. Demographic change during the period 2011 to 2022. Source: Population estimates for England and Wales. Office for National Statistics.  
2. Local business growth, size and productivity estimates. UK GVA and productivity estimates for other geographies. Office for National Statistics.



Hinkley Point C is continuing to drive the agenda for investment in both Somerset and the wider South West region. Somerset Chamber of Commerce is proud to be playing its part, working in partnership with Hinkley Point C to give local people and regional businesses the best opportunity to win contracts and benefit from the legacy of the project.

**David Crew,**  
Chief Executive  
Somerset Chamber of Commerce

# Built in Britain - Hinkley Point C and Sizewell C



“

The UK government’s historic support marks a turning point for the nuclear sector, shifting focus to building a world-class supply chain and attracting top talent. As a leading manufacturer, we look forward to sharing best practices and collaborating to create a nuclear hub in North Wales and across the UK.

**Bruno Boccard**  
Chairman of Boccard



## Laing O’Rourke Dartford

➤ Laing O’Rourke has been an essential partner in the delivery of Hinkley Point C since the start of construction where it joined forces with Bouygues TP to create Bylor - the project’s main civil engineering contractor in a multi-billion-pound contract.

The work at Hinkley Point C is creating jobs and local opportunities across Britain. There are 5,350 people working in high-skilled, well-paid and secure jobs. The company is also currently training 360 trade specialist apprentices and 99 professional apprentices - preparing them for future jobs in the nuclear industry.

Laing O’Rourke is bringing its people, with their expertise and purpose to the country’s next major nuclear project at Sizewell C. This will create 2,600 Suffolk construction jobs and add £4 billion to the local economy.



## Boccard Deeside

➤ Boccard is an international engineering, manufacturing, construction and maintenance company which plays a big role in the manufacturing, installation and testing of the power station’s pipework and mechanical systems.

In the summer of 2025, the company opened a new factory on Deeside in North Wales. Set up in response to the growing demand from Hinkley Point C, Sizewell C and the UK’s wider new nuclear programme, the facility will create around 200 jobs as Boccard doubles its manufacturing capacity from its former site. The team in North Wales will help supply the miles of high quality pipework, mechanical supports and tanks required to deliver Britain’s new nuclear infrastructure which will include new Small Modular Reactors in Wales.

The investment in North Wales is an example of nuclear creating new industrial capacity in Britain. It’s made possible by a long-term commitment from industry and government, in turn creating new and highly skilled jobs that change lives for the better.

# Supporting local suppliers

As construction reaches its peak, support for local and regional companies remains a priority. Working alongside the Somerset Chamber of Commerce, the project's supply chain team continues to connect businesses with opportunities both in the current construction phase and in preparation for the power station's 60-year operational lifespan.



Ollie Morgan

Local Supply Chain Engagement Manager

As part of a long-term partnership to deliver the local supply chain engagement programme, the Somerset Chamber of Commerce is working with Hinkley Point C to maximise local benefit and opportunity.

**The team provides advice, networking, advocacy and direct business to business engagement on behalf of the local business community.**

## Why is local supply chain engagement support so important?

Our work is essential for ensuring that the economic benefits of Hinkley Point C are retained within the region but also make a big difference to the delivery of the project itself.

A strong local supply chain provides contractors with reliable, responsive and geographically close partners, improving efficiency, reducing risk and supporting programme certainty. Local businesses bring valuable regional knowledge and agility, which can strengthen problem-solving and delivery outcomes on complex infrastructure projects.

## What role does Somerset Chamber of Commerce play in building Hinkley Point C?

Somerset Chamber of Commerce works alongside the Hinkley Point C team to promote local suppliers to win as much work as possible, championing local capability and ensuring that regional-based firms are visible, accessible, and able to benefit from the project. The Chamber has supported businesses in engaging with opportunities and navigating the requirements needed to participate.

To date, the Chamber has over 5,600 local and regional supplier registrations, carried out almost 1,000 supply chain searches for contractors, and mapped more than 4,000 suppliers to specific work package requirements.

## What does the future look like for businesses across Somerset?

The future for businesses across Somerset is increasingly positive thanks to the long-term impact of Hinkley Point C. The region is now recognised as a hub for major infrastructure delivery, enhancing its attractiveness for future investment and large-scale developments.

As local firms build experience and capability through involvement in Hinkley Point C, they are better positioned to secure opportunities both within Somerset and further afield. Continued investment in skills and training is also strengthening the local workforce, creating a more adaptable and competitive business base.

LOCAL SUPPLIER CASE STUDY

# AMS – Bridgwater

AMS Nuclear based in Bridgwater specialises in the design and manufacture of electrical instrumentation and control systems and environmental monitoring equipment. Following previous work, the company recently secured a new multi-million-pound contract for the supply of sampling and process equipment at Hinkley Point C.

The new contract also places the company at the highest level of the project's supply chain and reflects strong confidence in AMS Nuclear's technical capability.

The award is already shaping AMS Nuclear's development plans, with the company expanding its engineering and project delivery teams and investing in early-career pathways, including apprenticeships and degree-level opportunities. AMS Nuclear currently has two apprentices and is actively recruiting six more. This growth will support increasing demand while contributing to the development of high-value technical skills within the South West.

The company is now building on its experience at Hinkley Point C to support future projects, including Sizewell C and emerging technologies such as SMRs, where its system integration expertise is expected to play a key role.



LOCAL SUPPLIER CASE STUDY

# Mathias & Sons – Avonmouth

Established in 1952, Mathias & Sons Ltd is a fourth-generation, family-owned business based in Avonmouth near Bristol. The company specialises in innovative, sustainable and inclusive workwear and PPE and has been working as a supplier for Hinkley Point C since 2018.

Work at Hinkley Point C has seen the company grow from 38 to 55 employees and turnover almost doubling in the past two years with the help of a new multi-million-pound contract.

In partnership with Portable Space Ltd, Mathias & Sons formed Suffolk Safety Solutions Ltd and awarded Sizewell C's main PPE contract in January 2026. This will lead to the creation of 26 additional jobs and increase turnover by an additional 180%.

The company's work at Hinkley Point C has also made a big difference to the project's environmental impact. The introduction of PPE vending machines for stock control, removal of single-use plastics and introduction of recyclable PPE has been a step forward for the construction industry more widely.

Nick Bell  
Managing Director, RK Bell



# Our success at Hinkley Point C is proof that it is possible

that a small, local family business can operate within one of Europe's largest and most highly regulated construction projects. Today, we continue to deliver this landmark contract with pride, supporting the regional supply chain and maintaining the same high standards we set nearly a decade ago.



LOCAL SUPPLIER CASE STUDY

# RK Bell – Bridgwater

Bridgwater based civil engineering company RK Bell has been a trusted supplier of Hinkley Point C for over a decade and was integral in the creation of the Somerset Infrastructure Alliance – an organisation that helps local suppliers access the nuclear sector.

In 2026 RK Bell continues to provide site operations services to Hinkley Point C with significant contracts. The workforce has grown from 37 employees in 2016 to over 120 today. The company has trained new apprentices and overall supported 40 young people through work experience and T-Level placements.

Operating within a nuclear environment has raised the standards and accelerated investments in machinery, workforce development and apprenticeships. Those improvements remain embedded in the business today, positioning RK Bell as a nuclear-ready SME capable of supporting nuclear new build across the UK.



# Protecting the environment

Hinkley Point C's reliable low-carbon electricity is needed to help secure Britain's future electricity supply whilst also making a difference to avoid the worst environmental impacts of climate change.

Nuclear power is part of the Government's future energy mix for good reasons. It produces a lot of reliable electricity in a small space. Available when it's needed most, Hinkley Point C will power around six million homes and 10% of the country's current electricity demand. In a future system powered mostly by wind, having nuclear in the mix makes the system more secure, more reliable, affordable and easier to achieve.

**10%**

of the UK's current low-carbon electricity provided for 60 years

**98%**

recycled steel sourced in Britain for construction

**600 million**

million tonnes of CO<sub>2</sub> avoided throughout operation

**64**

environmental specialists are working at Hinkley Point C

**65,000**

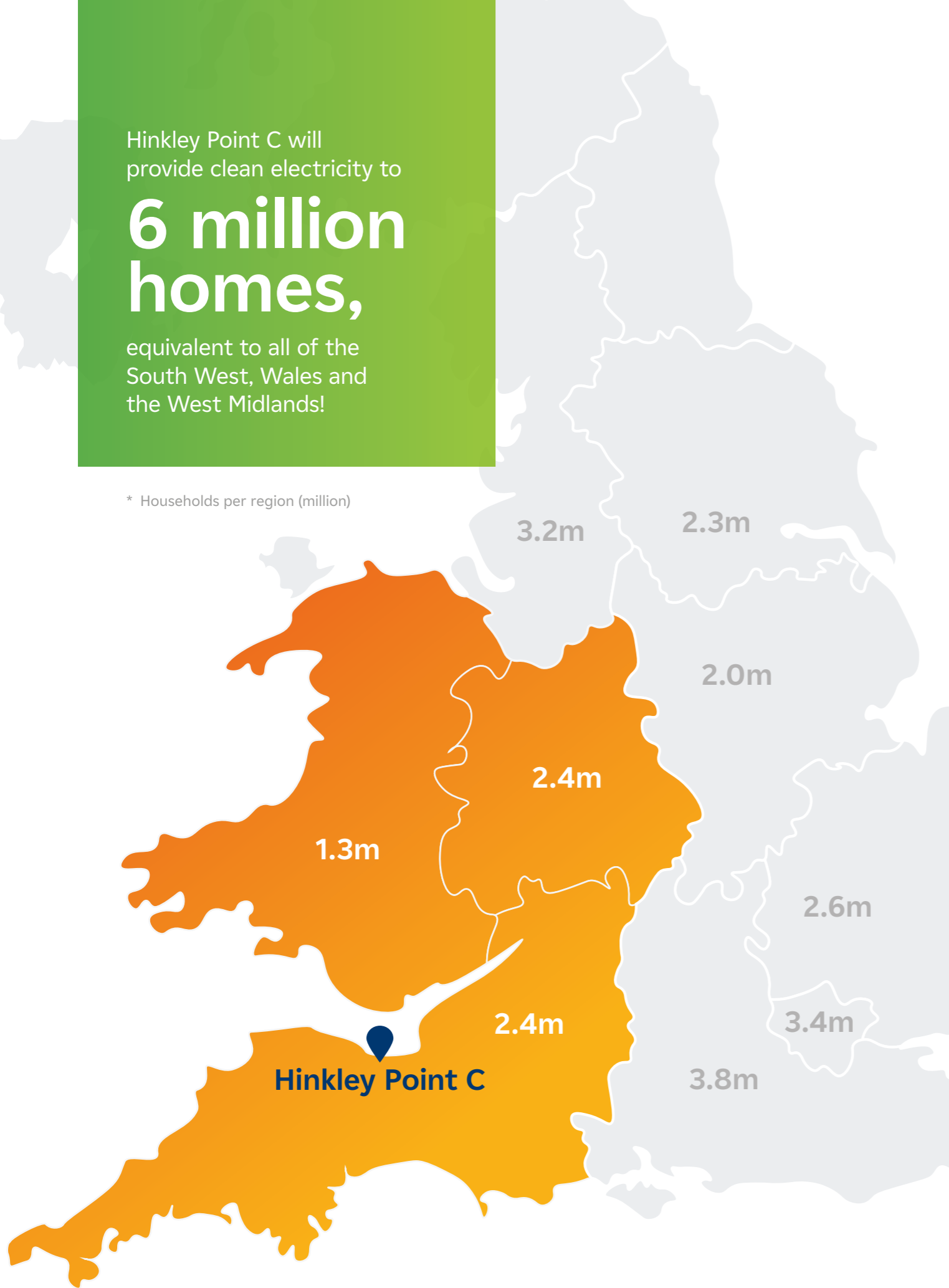
trees planted around the construction site

Hinkley Point C will provide clean electricity to

# 6 million homes,

equivalent to all of the South West, Wales and the West Midlands!

\* Households per region (million)



Overall lifetime carbon emissions:

➤ **5.5g CO<sub>2</sub>e/kWh**

CO<sub>2</sub> avoided throughout operations:

➤ **600 million tonnes**

➤ **6 months**

of operation required to avoid the equivalent carbon emissions of the entire construction

## Reducing the environmental impact of construction

Hinkley Point C's contribution to fighting climate change means that during its 60 years of operation it will have a large, positive impact on the environment.

All energy technologies create some carbon emissions in their operation and construction, but studies confirm that Hinkley Point C's impact is even smaller than wind and solar. We are working to reduce that impact further and to help biodiversity thrive around our site. Importantly, all three technologies have emissions which are just a fraction of gas and coal. To put that into perspective, a gas power plant the size of Hinkley Point C would emit as much CO<sub>2</sub> in just six months as Hinkley Point C produced during its construction.

Reducing emissions is a key challenge for the construction industry. Hinkley Point C is working to reduce its impact further with new techniques that could become standard in the future.

Hinkley Point C Ecologist Luke Stevens managed the early restoration of land to form new habitats.



## Restoring seagrass

Together with Project Seagrass and the Sea Rangers, Hinkley Point C launched the Stolford Seagrass restoration project in 2024. The project is conserving and enhancing the seagrass meadows located just offshore of the new power station at Stolford in Bridgwater Bay.

6,000 seeds were harvested from the existing seagrass meadow in 2024 before transfer to Project Seagrass's nursery facilities located in Pendine, Wales. The seeds have now been successfully propagated and grown-on with new adult plants ready to be planted back out in the natural environment.

The expansion of the seagrass meadow will increase its resilience to climate change whilst also helping to enhance the wider biodiversity of the Severn Estuary.



## Supporting a circular economy

Hinkley Point C's waste management strategy is focused on recycling and repurposing as much as possible. The team makes this happen by minimising the total use of materials being used, segregating waste to avoid landfill and maximising reuse and recycling of surplus materials.

Hinkley Point C's Waste Consolidation Centre is located at the heart of the construction site. All waste is sent to the centre to be sorted, which in 2025 ensured that 98% of our waste was diverted from landfill. The consolidation of waste also reduces the number of vehicles required to remove it from the construction site. In 2025 alone, over 9,000 vehicle movements were avoided as a result.

Maximising the reuse of materials before they become waste can bring even more benefit, with Hinkley Point C developing its own online repurposing platform. The software catalogues assets and materials available to be reused before they are auctioned or donated to the community.

In one week alone, more than 10,000 tonnes of material were repurposed and transferred to local businesses, minimising costs for all and avoiding more than 750 tonnes of CO<sub>2</sub> if the material had been treated as waste.



Hinkley Point C has transferred surplus materials to the local carnival clubs to be used in the construction of their carts.



## Landscape restoration

Hinkley Point C has already completed an early restoration of the land at the southern edge of the construction site for local people to enjoy.

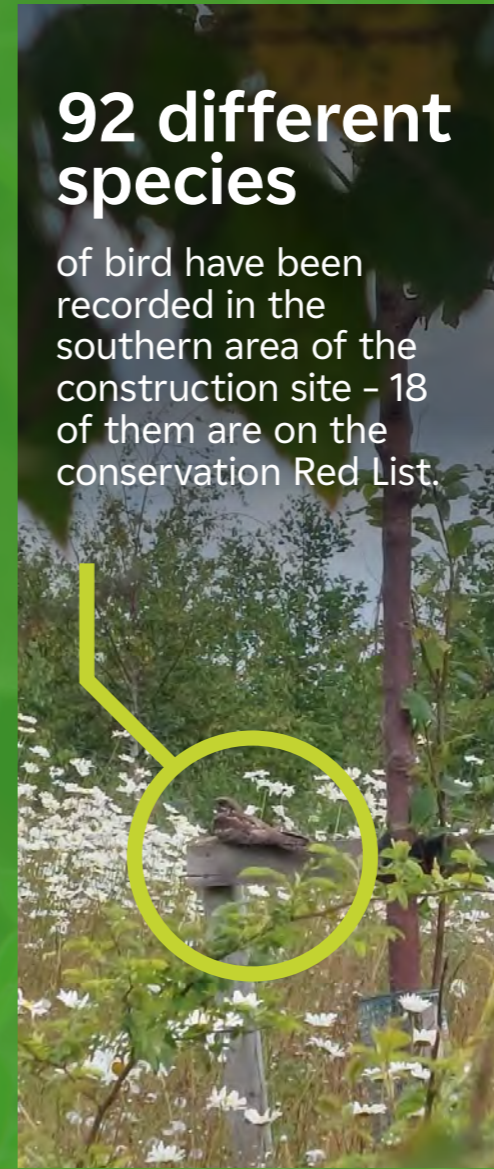
Near the village of Shurton, the landscaped area features a series of footpaths, winding through tens of thousands of newly planted trees and shrubs. Having originally been agricultural land, it has been converted into an area which will be far richer in biodiversity.

The space attracts a wide range of wildlife by creating habitats for birds, badgers and water voles. Another design feature is the planting of a wide variety of native shrubs and trees, giving wildlife plenty to feed on in a sustainable habitat.



## 92 different species

of bird have been recorded in the southern area of the construction site - 18 of them are on the conservation Red List.



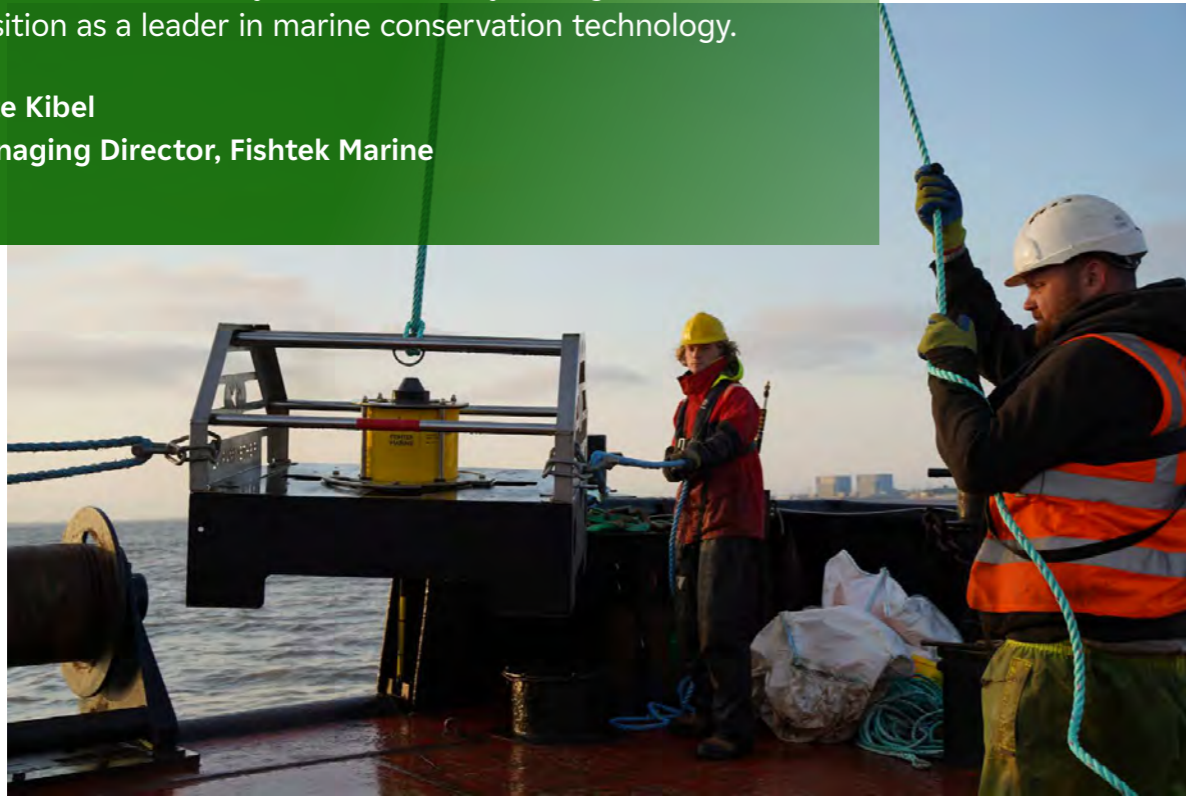
## Advanced technology to monitor wildlife

Following the early reinstatement of the southernmost section of the construction site, Hinkley Point C's team of ecologists have continued to monitor the growing biodiversity in the area. In 2025, a new system was trialled to better understand the area and the environmental benefits being created.

Bio-acoustic systems work by placing microphones in the environment to record the calls, songs and other noises made by animals. Using AI, the noises can then be isolated and analysed to identify the species living in the area. During the trial period, just under 80,000 individual bird calls were captured across 92 different species. Within those 92 species, 27 were previously unrecorded in the area with 18 being on the conservation Red List.

The new acoustic fish deterrent will protect fish in the Severn Estuary and potentially be an option for many more power stations throughout the world. The success of our work at Hinkley Point C will only strengthen our position as a leader in marine conservation technology.

**Pete Kibel**  
Managing Director, Fishtek Marine



## ↓ Fish protection measures

Hinkley Point C will be the first in the area to have fish protection measures installed. The three systems will cost more than £700 million and give Hinkley Point C more fish protection than any other power station in the world. This will help protect the internationally important Severn Estuary.

The new power station will use specially designed intake heads to slow the speed of water entering the cooling tunnels, allowing fish to escape from as close as two metres in a 20-kilometre-wide channel. A fish return system will also transfer fish back to the sea.

An innovative, ultrasound-based acoustic fish deterrent has also been developed for the project by fisheries conservation experts Fishtek Marine in Devon. It can be deployed and maintained without using divers and is compact compared to earlier proposed systems that used more than 250 underwater loudspeakers.

Sea trials carried out by Swansea University have shown that the acoustic fish deterrent is proving to be very effective at keeping targeted fish species away from the power station's water intakes.

## ↓ Sourcing local food

The Somerset Larder was formed with support from Hinkley Point C at the very start of construction and brings together produce from the region's best farmers, food makers, coffee roasters and bakers.

Serving thousands of meals every single day at the construction site using local ingredients is making a big difference to the environment and the local economy. Meat comes from Somerset and Devon farms, bread and pastries from Yeovil, milk from dairies across the South West and tea and coffee distributed from Minehead.



**In 2025 alone, almost 80% of produce was sourced from either Somerset or the South West with £17 million spent in the area overall.**

# CHANGE IS IN OUR POWER

[edfenergy.com/hpc](https://edfenergy.com/hpc)

NNB Generation Company (HPC) Limited,  
1000, Park Avenue, Aztec West Business Park,  
Bristol, BS32 4SQ, United Kingdom  
Registered Number 06937084.  
© EDF - May 2026.

