

HPC COMPANY DOCUMENT

HINKLEY POINT C MATERIAL CHANGE APPLICATION EIA SCOPING REPORT - APPENDIX A PLANS

Revision	02
Date of Issue	16/03/22
Document No.	100977468
Status	S2 - FIT FOR INFORMATION
Owner & Approver	Andrew Goodchild
Technical Reviewer	John Pingstone
Author	Isabelle Barnard

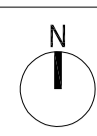
© Copyright 2022 NNB Generation Company (HPC) Limited. All rights reserved.

APPROVAL:

Prepared by:	Name: Isabelle Barnard Title: *Environmental Consultant Jacobs	Date: 16/03/22
Verified by:	Name: John Pingstone Title: *Lead Planner HPC	Date: 16/03/22
Approved by:	Name: Andrew Goodchild Title: * Planning Manager HPC	Date: 16/03/22

DOCUMENT CONTROL

Revision	Purpose	Amendment	By	Date
01	S2 - FIT FOR INFORMATION	First issue*	* Isabelle Barnard	04/03/2022
02	S2 - FIT FOR INFORMATION	Minor revisions in response to request for further information received 07/03/2022*	* Isabelle Barnard	16/03/2022



TEAMCENTER NUMBER
100969260

STATUS
P1

- NUCLEAR ISLAND**
- 01 REACTOR BUILDING
 - 02 FUEL BUILDING
 - 03 SAFEGUARD BUILDING
 - 04 SAFEGUARD BUILDINGS
 - 05 NUCLEAR AUXILIARY BUILDING
 - 06 ACCESS TOWER
 - 07 FUEL BUILDING HALL
 - 08 BORON STORAGE
 - 09 RADIOACTIVE WASTE STORAGE BUILDING
 - 10 RADIOACTIVE WASTE PROCESS BUILDING
 - 11 RADIOACTIVE WASTE TREATMENT BUILDING (UNIT 2)
 - 12 HOT LAUNDRY
 - 13 HOT WORKSHOP, HOT WAREHOUSE, FACILITIES FOR DECONTAMINATION
 - 14 EFFLUENT TANKS + REFUELLING WATER TANKS
 - 15 EMERGENCY DIESEL GENERATORS
 - 16 COOLING WATER DISCHARGE WEIR (BUILDINGS)
 - 17 UNDERGROUND TUNNEL HIGHPOINT
 - 18 BATTERY LOAD BANKS
- CONVENTIONAL ISLAND**
- 19 TURBINE HALL & SKYBRIDGES
 - 20 NON-CLASSIFIED ELECTRICAL BUILDING
 - 21 GAS INSULATED SWITCH GEAR
 - 22 MAIN TRANSFORMER
 - 23 UNIT TRANSFORMER
 - 24 AUXILIARY TRANSFORMER
 - 25 HYDRAZINE STORAGE
- OPERATIONS**
- 26 OPERATIONAL SERVICE CENTRE
- COOLING WATER PUMPHOUSE & ASSOCIATED BUILDINGS**
- 27 COOLING WATER PUMPHOUSE
 - 28 FOREBAY
 - 29 OUTFALL POND (SURGE CHAMBER)
 - 30 FILTERING DEBRIS RECOVERY PIT
 - 31 FIRE-FIGHTING WATER BUILDING
 - 32 DISCHARGE SHAFT
- REMAINING BALANCE OF PLANT & OTHER PLANT**
- 33 DEMINERALISATION STATION
 - 34 AUXILIARY BOILERS
 - 35 HYDROGEN STORAGE
 - 36 OXYGEN STORAGE
- ANCILLARY, OFFICE & STORAGE**
- 37 CHEMICAL PRODUCTS STORAGE
 - 38 SEWAGE TREATMENT PLANT
 - 39 CONVENTIONAL ISLAND WATER STORAGE TANK
 - 40 NUCLEAR ISLAND WATER STORAGE TANK
 - 41 DEGASSED WATER STORAGE TANKS
 - 42 INTERIM SPENT FUEL STORE (ISFS)
 - 43 EQUIPMENT STORAGE (FOR ISFS)
 - 44 INTERMEDIATE LEVEL WASTE INTERIM STORAGE FACILITY
 - 45 MAIN ACCESS CONTROL BUILDING
 - 46 EMERGENCY RESPONSE ENERGY CENTRE
 - 47 OFF SITE DELIVERY CHECKPOINT
 - 48 AUXILIARY ADMINISTRATION BUILDING
 - 49 EMERGENCY RESPONSE CENTRE
 - 50 GARAGE FOR HANDLING FACILITIES
 - 51 OIL & GREASE STORAGE + OIL ANCILLARY BUILDING
 - 52 AREVA WAREHOUSE
 - 53 RAW WATER AND POTABLE WATER SUPPLY
- PUBLIC & TRAINING**
- 54 SIMULATOR BUILDING / TRAINING CENTRE
 - 55 OUTAGE ACCESS CONTROL BUILDING
 - 56 CONTAMINATED TOOLS STORAGE
 - 57 CONVENTIONAL WASTE STORAGE
 - 58 TRANSIT AREA FOR VERY LOW LEVEL WASTE AND LOW LEVEL WASTE
 - 59 BACKUP EMERGENCY EQUIPMENT STORE
 - 60 SERVICE ACCESS BUILDINGS
 - 61 SERVICES VENTILATION BUILDING
- NATIONAL GRID SUBSTATION**
- 62 NATIONAL GRID SUBSTATION
- OTHER SITE STRUCTURES**
- 63 PUBLIC INFORMATION CENTRE
 - 64 NATIONAL GRID SUBSTATION
 - 65 HINKLEY POINT SUBSTATION
 - 66 SEA WALL (INCORPORATING COASTAL FOOTPATH)
 - 67 CAR PARK
 - 68 METEOROLOGICAL STATION MAST AND COMPOUND
 - 69 EDF ENERGY PYLON
 - 70 VALVE ROOM FOR DEMINERALISATION STATION
 - 71 BACK-UP CONTAINERISED GENERATORS
 - 72 SLUICE GATE STORAGE

DRAWING SYMBOLS & LEGEND

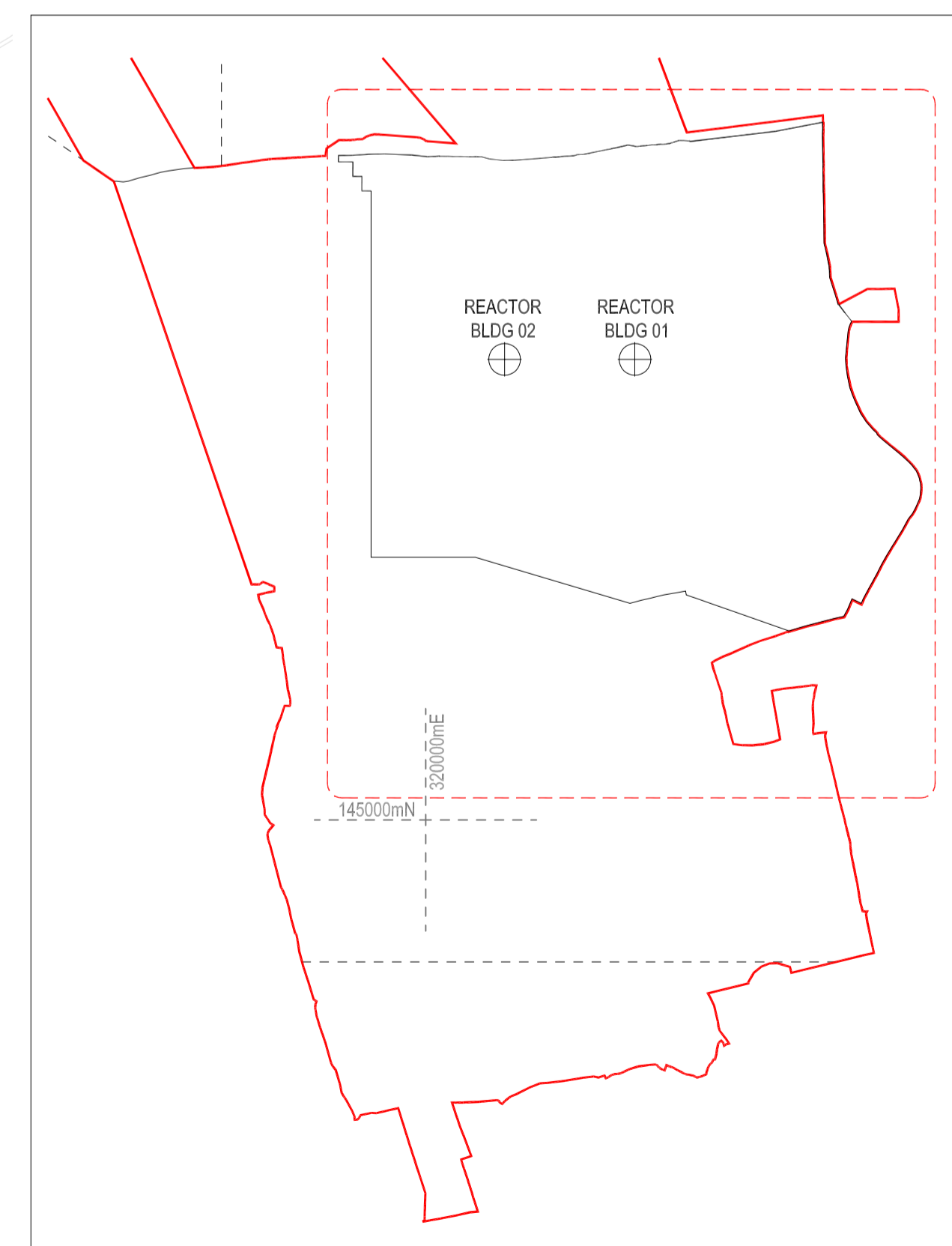
- HINKLEY POINT C DEVELOPMENT SITE BOUNDARY (DCO)
- HINKLEY POINT C PERMANENT DEVELOPMENT SITE BOUNDARY
- TEMPORARY JETTY SEAWARD HARBOUR LIMITS
- BUILDINGS / STRUCTURES
- NATIONAL GRID 400KV PYLONS & LINES (SEE CAVEAT BELOW)
- EMBANKMENT
- PYLONS & LINES - EDF ENERGY STANDARD
- RAILWAY TRACKS
- FENCES
- PARAMETER BUILDINGS
- RAINWATER CHANNEL

THE OVERHEAD LINES AND TOWER (PYLON) POSITIONS ILLUSTRATED ON THIS PLAN ARE INDICATIVE. NATIONAL GRID PROPOSALS FOR THESE OVERHEAD LINES AND PYLONS ARE SUBJECT TO A SEPARATE DCO APPLICATION REF. EN020001

REACTOR CENTRELINE OS CO-ORDINATES

UNIT 1	320369E	145812N	NOTE: ALL CO-ORDINATES ARE IN METRES AND ARE BASED ON THE ORDNANCE SURVEY NATIONAL GRID
UNIT 2	320139E	145812N	

REVISION	DATE	DRAWN	CHECKED	REASONS FOR REVISION/ COMMENTS	APPROVED
05	JAN 2022	ATK	ATK	PERMANENT DEVELOPMENT DCO CHANGE SUBMISSION	NNB
04	JUNE 2021	NNB	NNB	PERMANENT DEVELOPMENT DCO CHANGE SUBMISSION	NNB
03	SEPT 2017	NNB	NNB	PERMANENT DEVELOPMENT DCO CHANGE SUBMISSION	NNB
02	NOV 2014	NNB	NNB	PERMANENT DEVELOPMENT DCO CHANGE SUBMISSION	NNB
01	SEPT 2011	YRM	YRM	FOR IPC SUBMISSION	NNB



HPC PERMANENT DEVELOPMENT SITE LOCATION PLAN
SCALE 1:10000

SITE LAYOUT PLAN
SCALE 1:2500

HinkleyPointC
Helping Britain Achieve Net Zero

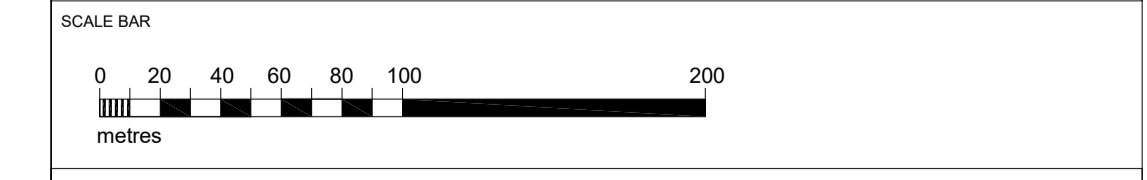
EDF **CGN**

DRAWING TITLE
Hinkley Point C Development Site
HPC Permanent Development Site

**Site layout Plan (Operational)
Regulation 5(2)(o)**

PROJECT DRAWING REFERENCE NO. HINK-A1-SL-00-GA-010	REVISION 05	SCALE 1:2500 @ A1	DATE JAN 2022
---	----------------	----------------------	------------------

DOCUMENT
DCO Change Application Drawing - Detail (for Approval)



DRAWING SECURITY CLASSIFICATION

- PROTECTIVE MARKING REQUIRED
- NOT PROTECTIVELY MARKED



TEAMCENTER NUMBER		STATUS
100969261		P1
Ref:	Building	Siting Parameter
1	Nuclear Island	
2	Reactor Building	
3	Fuel Building	
4	Safeguard Buildings	
5	Nuclear Auxiliary Building	
6	Access Tower	
7	Fuel Building Hall	
8	Room Storage	
9	Radioactive Waste Storage Building	
10	Radioactive Waste Process Building	
11	Radioactive Waste Treatment Building (Unit 2)	
12	Hot Laundry	
13	Hot Workshop, Hot Warehouse, Facilities For Decontamination	
14	Effluent Tanks - Refueling Water Storage Tank	+/- 3m south
15	Emergency Chemical Generators	
16	Cooling Water Discharge Vessels (Buildings)	
17	Underground Tunnel Highpoints	
18	Battery Load Banks	+/- 5m in any direction
Conventional Island		
19	Turbine Hall & Sky Bridges	
20	Non-Classified Electrical Building	
21	Gas Insulated Substation	
22	Main Transformer	
23	Unit Transformer	
24	Auxiliary Transformer	
25	Hydraulic & Airborne Storage	+/- 3m south
Operations		
26	Operational Service Centre	+/- 3m in any direction
Cooling Water Pump House & Associated Buildings		
27	Cooling Water Pump House	
28	Forebay	
29	Outlet Pond (Surge Chamber)	
30	Filling/Discharge Recovery Pit	
31	Fire-Fighting Water Building	
32	Discharge Shaft	+/- 5m in any direction
Remaining Balance Of Plant & Other Plant		
33	Demineralisation Station	
34	Auxiliary Boiler	
35	Hydrogen Storage	
36	Charged Storage	
37	Chemical Products Storage	
38	Sewage Treatment Plant	
39	Conventional Island Water Storage Tank	
40	Nuclear Island Water Storage Tank	+/- 5m in any direction
41	Disposal Water Storage Tanks	
Fuel & Waste Storage		
42	Interim Spent Fuel Store (ISFS)	+/- 5m in any direction
43	Equipment Storage For Interim Spent Fuel Store	
44	Interim Level Waste Interim Storage Facility	+/- 3m in any direction
45	Auxiliary Office & Storage	
46	Main Access Control Building	
47	Emergency Response Energy Centre	
48	Off Site Delivery Checkpoint	
49	Auxiliary Administration Building	
50	Emergency Response Centre	
51	Storage For Handling Facilities	
52	Oil & Grease Storage - Oil Auxiliary Building	
53	Area Warehouse	
54	Raw Water And Potable Water Supply	
55	Outage Access Control Building	
56	Containerised Fuel Storage	
57	Conventional Waste Storage	
58	Transfer Area For Very Low Level Waste & Low Level And Low Level Waste	+/- 5m in any direction
59	Backup Emergency Equipment Store	+/- 15m south and +/- 5m north, east or west
60	Service Access Buildings	+/- 10m in any direction
61	Service Validation Building	
Public & Training		
62	Simulated Building / Training Centre	
63	Public Information Centre	+/- 5m in any direction
National Grid Substation		
64	National Grid Substation	+/- 5m in any direction
Other Site Structures		
65	Hinkley Point Substation	
66	Car Park	As indicated on Landscaping Scheme
67	Mezzanine/Station Mast and Compound	+/- 6m to a north direction, +/- 6m to a east direction, +/- 3m to a west direction, +/- 4.4m to a south direction
68	EDF Energy Pylon	+/- 5m in any direction
69	Value Room for Demineralisation Station	
70	Back-up Containerised Generators	
71	Sludge Gate Storage	+/- 5m in any direction
72	Sludge Gate Storage	

DRAWING SYMBOLS & LEGEND			
[Symbol]	MAXIMUM BUILDING FOOTPRINT	[Symbol]	PYLONS & LINES - EDF ENERGY STANDARD
[Symbol]	MINIMUM BUILDING FOOTPRINT	[Symbol]	RAILWAY TRACKS
[Symbol]	PARAMETER PLAN BUILDINGS	[Symbol]	FENCES
[Symbol]		[Symbol]	HINKLEY POINT C PERMANENT DEVELOPMENT SITE BOUNDARY

THE MAXIMUM BUILDING HEIGHT FOR BUILDINGS / STRUCTURES COMPRISES THE ROOF HEIGHT STATED ON THIS DRAWING AND AN ADDITIONAL 1M TO TAKE ACCOUNT OF ANY ADDITIONAL ROOF PLANT OR MACHINERY THAT MAY PROTRUDE ABOVE THE STATED ROOF HEIGHT. (SEE HPC DESIGN AND ACCESS STATEMENT, CHAPTER 19 FOR DETAILS).

REV	DATE	BY	CHKD	REASON FOR REVISION COMMENTS	APPROVED
06	JAN 2022	ATK	ATL	PERMANENT DEVELOPMENT DCO CHANGE SUBMISSION	NHB
04	JUNE 2021	NHB	NHB	PERMANENT DEVELOPMENT DCO CHANGE SUBMISSION	NHB
03	SEPT 2017	NHB	NHB	PERMANENT DEVELOPMENT DCO CHANGE SUBMISSION	NHB
02	NOV 2016	NHB	NHB	PERMANENT DEVELOPMENT DCO CHANGE SUBMISSION	NHB
01	SEPT 2015	NHB	NHB	HPC PFC SUBMISSION	NHB

DRAWING TITLE
Hinkley Point C Development Site
HPC Permanent Development Site

HPC Site Parameter Plan
Regulation 5(2)(c)

PROJECT DRAWING REFERENCE NO: HINK-A1-SL-00-GA-002

REVISION: 05

SCALE: 1:1000 @ A0

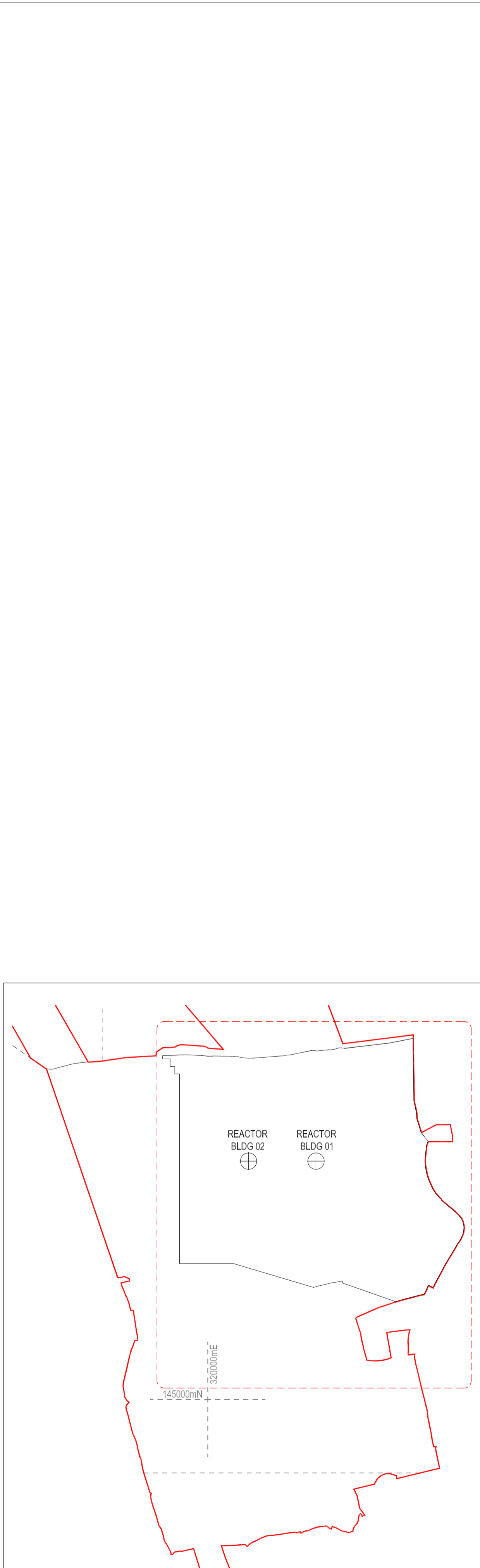
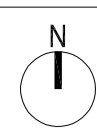
DATE: JAN 2022

DOCUMENT: DCO Change Application Drawing - Parameters (for Approval)

SCALE BAR: 0 10 20 30 40 50 100 METRES

DRAWING SECURITY CLASSIFICATION:
 PROTECTIVE MARKING REQUIRED
 NOT PROTECTIVELY MARKED

PARAMETERS FOR MAIN SITE
SCALE 1:1000



TEAMCENTER NUMBER
100968244

STATUS
P1

NUCLEAR ISLAND

- 01 REACTOR BUILDING
- 02 FUEL BUILDING
- 03 SAFEGUARD BUILDING
- 04 SAFEGUARD BUILDINGS
- 05 NUCLEAR AUXILIARY BUILDING
- 06 ACCESS TOWER
- 07 FUEL BUILDING HALL
- 08 BORON STORAGE
- 09 RADIOACTIVE WASTE STORAGE BUILDING
- 10 RADIOACTIVE WASTE PROCESS BUILDING
- 11 RADIOACTIVE WASTE TREATMENT BUILDING (UNIT 2)
- 12 HOT LAUNDRY
- 13 HOT WORKSHOP, HOT WAREHOUSE, FACILITIES FOR DECONTAMINATION
- 14 EFFLUENT TANKS + REFUELLING WATER TANKS
- 15 EMERGENCY DIESEL GENERATORS
- 16 COOLING WATER DISCHARGE WEIR (BUILDINGS)
- 17 UNDERGROUND TUNNEL HIGHPOINT
- 18 BATTERY LOAD BANKS

CONVENTIONAL ISLAND

- 19 TURBINE HALL & SKYBRIDGES
- 20 NON-CLASSIFIED ELECTRICAL BUILDING
- 21 GAS INSULATED SWITCH GEAR
- 22 MAIN TRANSFORMER
- 23 UNIT TRANSFORMER
- 24 AUXILIARY TRANSFORMER
- 25 HYDRAZINE STORAGE

OPERATIONS

- 26 OPERATIONAL SERVICE CENTRE

COOLING WATER PUMPHOUSE & ASSOCIATED BUILDINGS

- 27 COOLING WATER PUMPHOUSE
- 28 FOREBAY
- 29 OUTFALL POND (SURGE CHAMBER)
- 30 FILTERING DEBRIS RECOVERY PIT
- 31 FIRE-FIGHTING WATER BUILDING
- 32 DISCHARGE SHAFT

REMAINING BALANCE OF PLANT & OTHER PLANT

- 33 DEMINERALISATION STATION
- 34 AUXILIARY BOILERS
- 35 HYDROGEN STORAGE
- 36 OXYGEN STORAGE

OTHER SITE STRUCTURES

- 37 CHEMICAL PRODUCTS STORAGE
- 38 SEWAGE TREATMENT PLANT
- 39 CONVENTIONAL ISLAND WATER STORAGE TANK
- 40 NUCLEAR ISLAND WATER STORAGE TANK
- 41 DEGASSED WATER STORAGE TANKS
- 42 INTERIM SPENT FUEL STORE (ISFS)
- 43 EQUIPMENT STORAGE (FOR ISFS)
- 44 INTERMEDIATE LEVEL WASTE INTERIM STORAGE FACILITY
- 45 MAIN ACCESS CONTROL BUILDING
- 46 EMERGENCY RESPONSE ENERGY CENTRE
- 47 OFF SITE DELIVERY CHECKPOINT
- 48 AUXILIARY ADMINISTRATION BUILDING
- 49 EMERGENCY RESPONSE CENTRE
- 50 GARAGE FOR HANDLING FACILITIES
- 51 OIL & GREASE STORAGE + OIL ANCILLARY BUILDING
- 52 AREVA WAREHOUSE
- 53 RAW WATER AND POTABLE WATER SUPPLY
- 54 METEOROLOGICAL STATION
- 55 OUTAGE ACCESS CONTROL BUILDING
- 56 CONTAMINATED TOOLS STORAGE
- 57 CONVENTIONAL WASTE STORAGE
- 58 TRANSIT AREA FOR VERY LOW LEVEL WASTE AND LOW LEVEL WASTE
- 59 BACKUP EMERGENCY EQUIPMENT STORE
- 60 SERVICE ACCESS BUILDINGS
- 61 SERVICES VENTILATION BUILDING
- 62 SIMULATOR BUILDING / TRAINING CENTRE
- 63 PUBLIC INFORMATION CENTRE
- 64 NATIONAL GRID SUBSTATION
- 65 HINKLEY POINT SUBSTATION
- 66 SEA WALL (INCORPORATING COASTAL FOOTPATH)
- 67 CAR PARK
- 68 METEOROLOGICAL STATION MAST & COMPOUND
- 69 EDF ENERGY PYLON
- 70 VALVE ROOM FOR DEMINERALISATION STATION
- 71 BACK-UP CONTAINERISED GENERATORS
- 72 SLUICE GATE STORAGE

DRAWING SYMBOLS & LEGEND

- HINKLEY POINT C DEVELOPMENT SITE BOUNDARY (DCO)
- HINKLEY POINT C PERMANENT DEVELOPMENT SITE BOUNDARY
- TEMPORARY JETTY SEAWARD HARBOUR LIMITS
- BUILDINGS / STRUCTURES
- NATIONAL GRID 400KV PYLONS & LINES (SEE CAVEAT BELOW)
- EMBANKMENT
- PYLONS & LINES - EDF ENERGY STANDARD
- RAILWAY TRACKS
- FENCES
- PARAMETER BUILDINGS
- RAINWATER CHANNEL

THE OVERHEAD LINES AND TOWER (PYLON) POSITIONS ILLUSTRATED ON THIS PLAN ARE INDICATIVE. NATIONAL GRID PROPOSALS FOR THESE OVERHEAD LINES AND PYLONS ARE SUBJECT TO A SEPARATE DCO APPLICATION REF. EN020001

REACTOR CENTRELINES OS CO-ORDINATES

UNIT 1	320369E	145812N
UNIT 2	320139E	145812N

NOTE:
ALL CO-ORDINATES ARE IN METRES AND ARE BASED ON THE ORDNANCE SURVEY NATIONAL GRID

TRACKED CHANGES KEY

- New Building or Structure
- Building or Structure Removed
- Building or Structure Footprint Revised
- Building or Structure Moved

REVISION	DATE	DRAWN	CHECKED	REASONS FOR REVISION/ COMMENTS	APPROVED
01	JAN 2022	ATK	ATK	PERMANENT DEVELOPMENT DCO CHANGE SUBMISSION	NNB

HinkleyPointC
Helping Britain Achieve Net Zero

EDF **CGN**

DRAWING TITLE
Hinkley Point C Development Site
HPC Permanent Development Site

Site layout Plan - Tracked Changes Regulation 5(2)(o)

PROJECT DRAWING REFERENCE NO. HINK-A1-SL-00-GA-011	REVISION 01	SCALE 1:2500 @ A1	DATE JAN 2022
--	-----------------------	-----------------------------	-------------------------

DOCUMENT
Proposed revisions to DCO Site Layout Plan to be submitted for approval

SCALE BAR
0 20 40 60 80 100 200 metres

DRAWING SECURITY CLASSIFICATION

- PROTECTIVE MARKING REQUIRED
- NOT PROTECTIVELY MARKED

SITE LAYOUT PLAN
SCALE 1:2500

HPC PERMANENT DEVELOPMENT SITE LOCATION PLAN
SCALE 1:10000

DRAWING SYMBOLS & LEGEND

[Symbol]	HINKLEY POINT C DEVELOPMENT SITE BOUNDARY (DCO)	[Symbol]	RAILWAY TRACKS
[Symbol]	HINKLEY POINT C PERMANENT DEVELOPMENT SITE BOUNDARY	[Symbol]	FENCES
[Symbol]	TEMPORARY JETTY SEAWARD HARBOUR LIMITS	[Symbol]	OVERHEAD LINES
[Symbol]	TYPE 01 PAVING	[Symbol]	GRASSLAND
[Symbol]	TYPE 02 PAVING	[Symbol]	MEADOW
[Symbol]	TYPE 03 PAVING	[Symbol]	BRIDGWATER BAY
[Symbol]	ASPHALT	[Symbol]	HEDEGROW
[Symbol]	GRAVEL	[Symbol]	GREEN ROOF
[Symbol]	EMBANKMENT 1:2	[Symbol]	TREES
[Symbol]	NATIONAL GRID 400KV PYLON LINES (SEE CAVEAT BELOW)	[Symbol]	PYLONS & LINES - EDF ENERGY STANDARD

THE OVERHEAD LINES AND TOWER (PYLON) POSITIONS ILLUSTRATED ON THIS PLAN ARE INDICATIVE. NATIONAL GRID PROPOSALS FOR THESE OVERHEAD LINES AND PYLONS ARE SUBJECT TO A SEPARATE DCO APPLICATION REF. EN20001

REPRODUCED FROM ORDNANCE SURVEY MAP WITH THE PERMISSION OF ORDNANCE SURVEY ON BEHALF OF THE CONTROLLER OF HER MAJESTY'S STATIONERY OFFICE © CROWN COPYRIGHT (2011). ALL RIGHTS RESERVED. NNB GEN/000490

REACTOR CENTRELINE OR CO-ORDINATES

UNIT 1	320399.3912mE	NOTE:	ALL CO-ORDINATES ARE IN METRES AND ARE BASED ON THE ORDNANCE SURVEY NATIONAL GRID
UNIT 2	145812.1430mN		
UNIT 2	320199.3912mE		
UNIT 2	145812.1430mN		

HINKLEY POINT A

HINKLEY POINT B

GREEN LANE

C182 (WICK MOOR DRIVE)

THE OVERHEAD LINES AND TOWER (PYLON) POSITIONS ILLUSTRATED ON THIS PLAN ARE INDICATIVE NATIONAL GRID PROPOSALS FOR THESE OVERHEAD LINES AND PYLONS ARE SUBJECT TO A SEPARATE DCO APPLICATION REF.EN020001

06	FEB 2022	ATK	ATK	TO SUPPORT A DCO UPDATE	NAB
04	JUNE 2020	GA	GA	TO SUPPORT A DCO UPDATE	NAB
03	SEPT 2017	GA	GA	DCO UPDATE	NAB
02	NOV 2014	GA	GA	PERMANENT DEVELOPMENT DCO CHANGE SUBMISSION	NAB
01	SEPT 2011	YSM	YSM	FOR IPC SUBMISSION	NAB
REVISION	DATE	DRAWN	CHECKED	REASONS FOR REVISION COMMENTS	APPROVED



HINKLEY POINT C

DRAWING TITLE
Hinkley Point C Development Site Proposed Masterplan

HPC Development Site - Masterplan Regulation 5(2)(o)

PROJECT DRAWING REFERENCE NO: HINK-A1-MP-00-GA-001

REVISION: 05

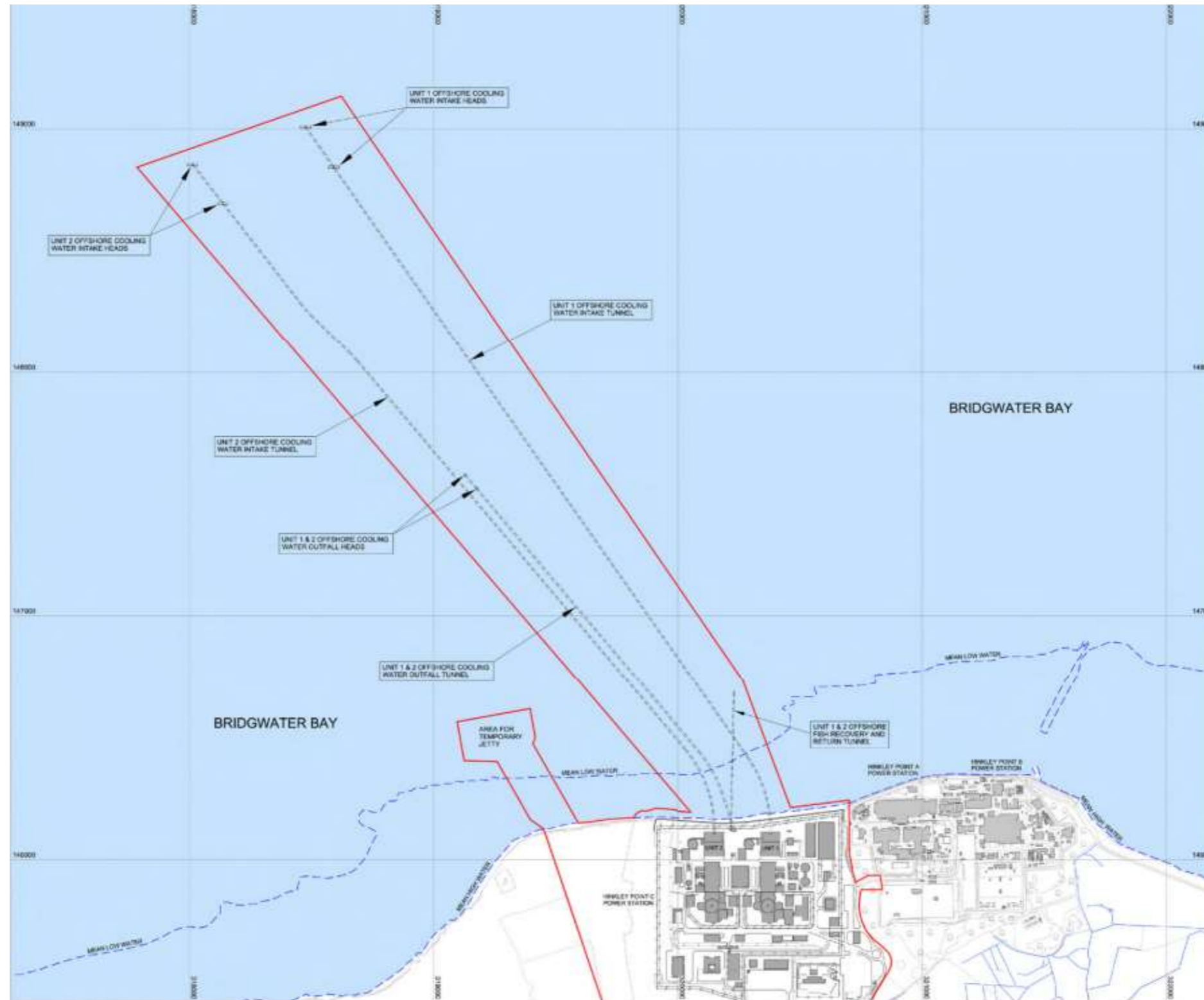
SCALE: 1:2500 @ A0

DATE: FEB 2022

DOCUMENT: DCO Change Application Drawing - Illustrative (not for Approval)

SCALE BAR: 0 20 40 60 80 100 200 metres

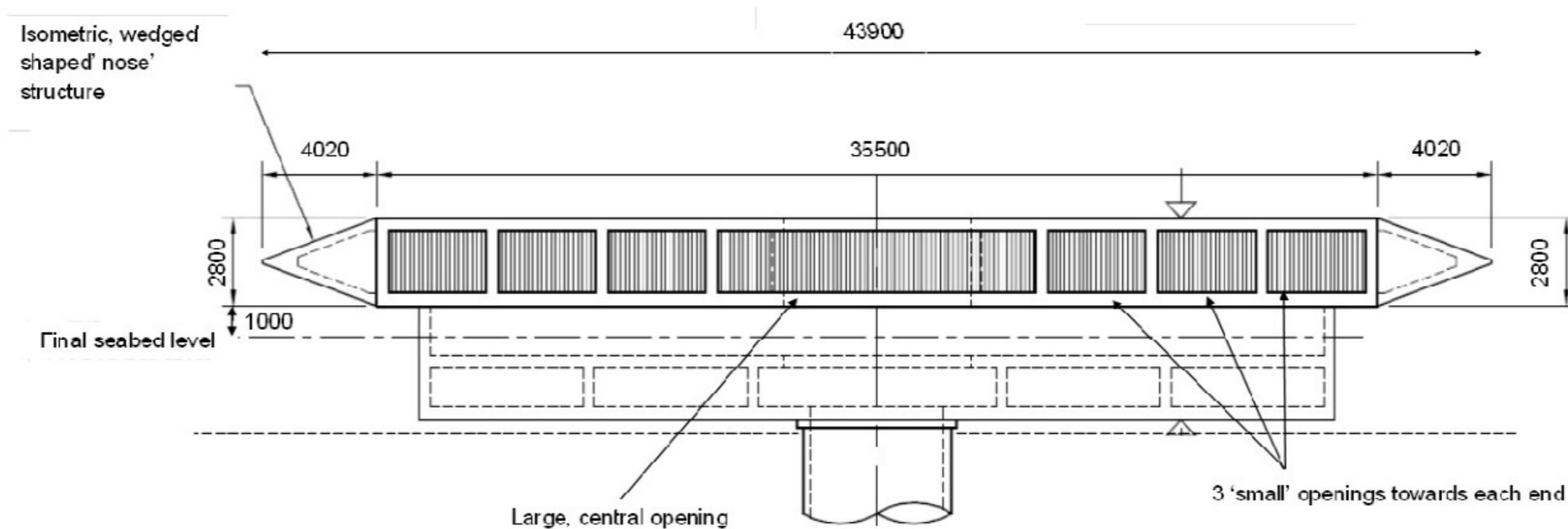
DRAWING SECURITY CLASSIFICATION:
 PROTECTIVE MARKING REQUIRED
 NOT PROTECTIVELY MARKED



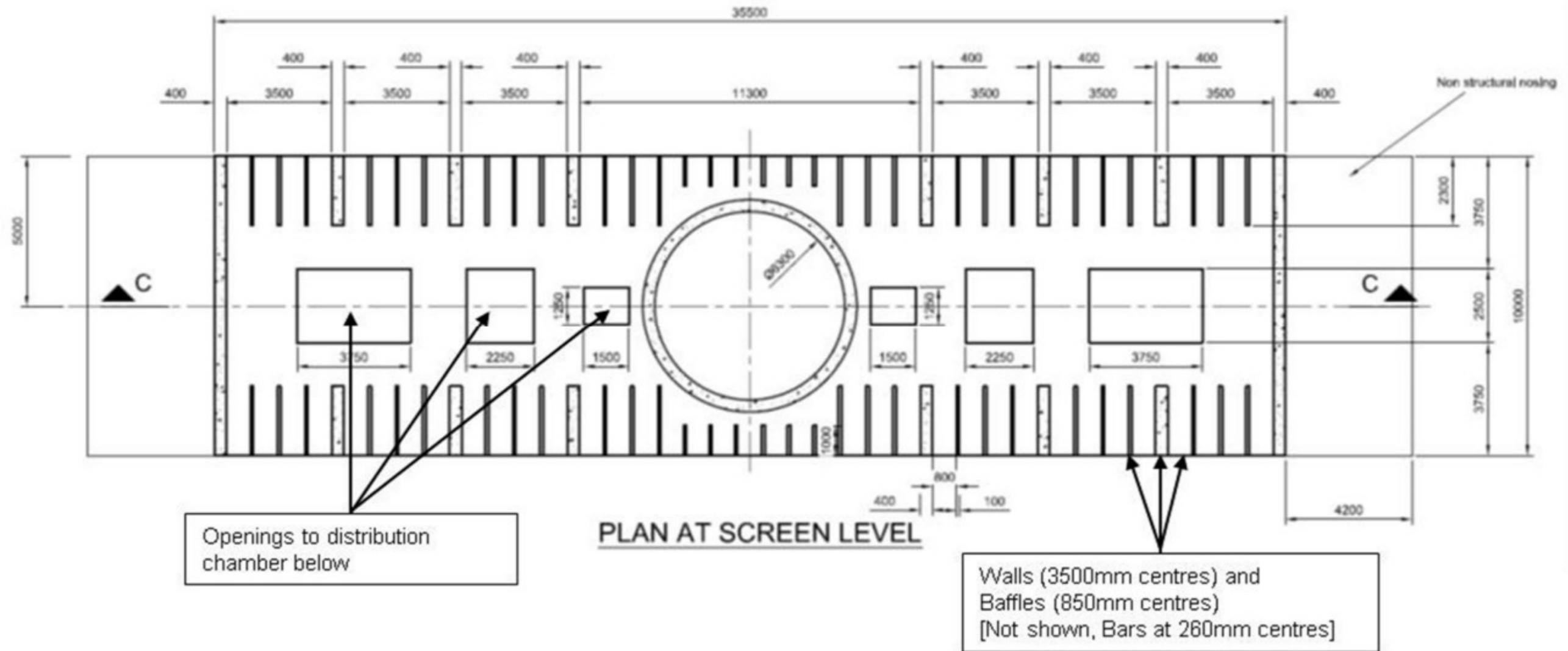
Plan 1: Locations of the intake headworks and intake tunnels (also showing outfall headworks and tunnels and Fish Return tunnel and outfall



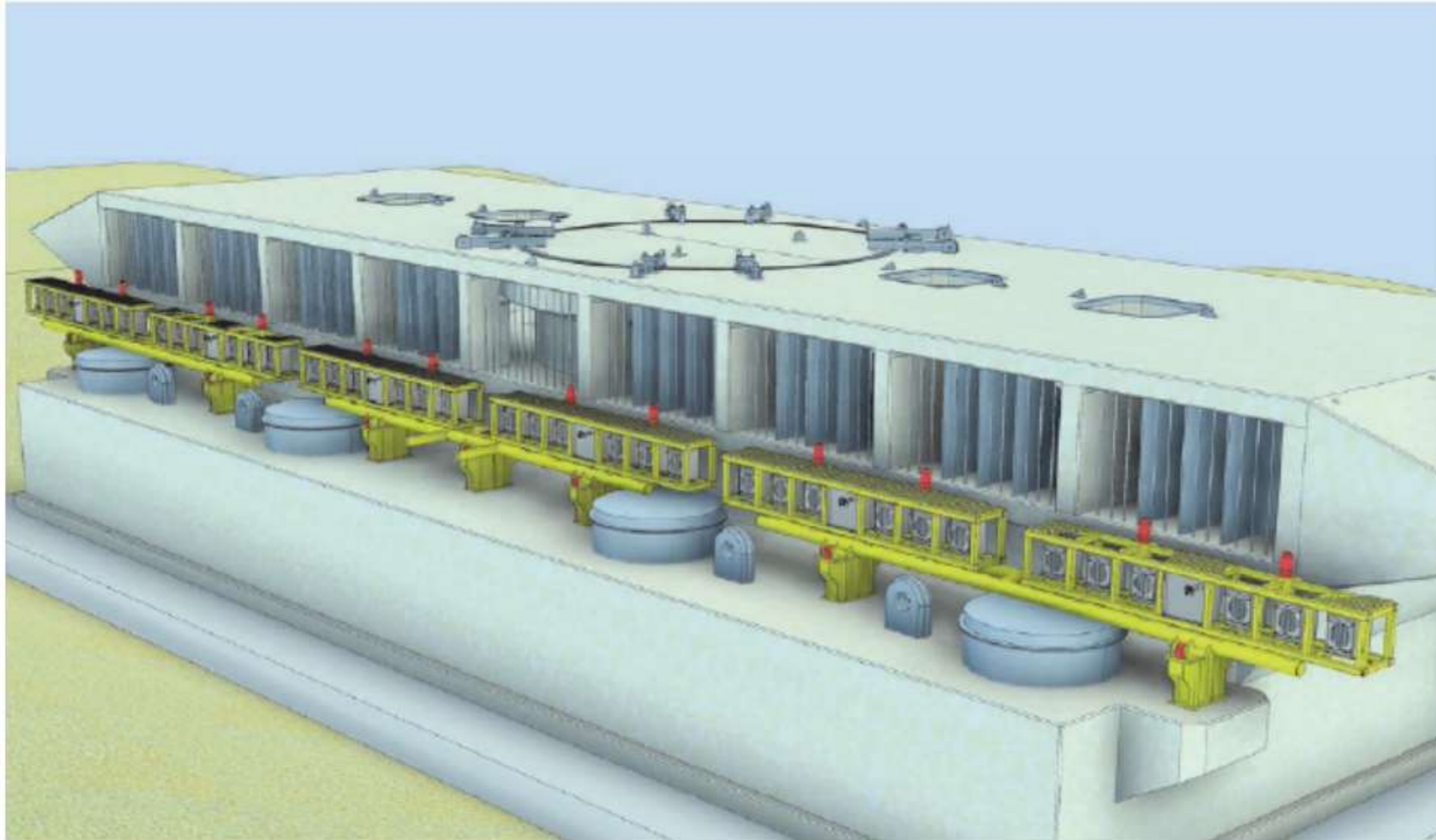
Plan 2: 3 Dimensional views of the intake heads (Type 1 on the left and Type 2 on the right; only the foundations are different; hydraulic performance are the same for both types)



Plan 3: Side view of low velocity, side-entry intake head



Plan 4: Plan view of low velocity, side-entry intake head



Plan 5: Potential siting of AFD structures as part of the LVSE intake head