

Welcome to the MAIN SITE FORUM

4th June 2026

CHANGE IS IN *OUR POWER*



Agenda:

Main Site Forum – Thursday 4th June 2026

1. Welcome and Introductions
2. Meeting note / matters arising from last Forum held on: 12th February 2026 - (Chair)
3. Project Progress Update - (Andrew Cockcroft, EDF)
4. Planning Update including reinstatement of NW corner - (Richard Clews, EDF)
5. Longer-term legacy discussion – (Andrew Cockcroft, EDF)
6. Any other business - (Chair)
7. Date of next meeting: Thursday 15th October 2026 at 6pm – (Chair)

Item 2: Matters Arising – MSF 12th February 2026

- **Item 2.7:** Reversing beacons - have team contacted RC? (ACTION AC)
- **Item 4.3.1:** Lighting on the stockpile (AFTERNOTE PROVIDED)
- **Item 6.2:** “Informal bus stopping” raised with transport team (ACTION)
- **Item 6.2.1:** Footgate permanently open (ACTION AC / MM)
- **Item 6.2.2:** Community litter picking suggestion (ACTION AC . MM)

Item 3: Project Progress Update

Andrew Cockcroft

Head of Stakeholder Relations and Social Impact

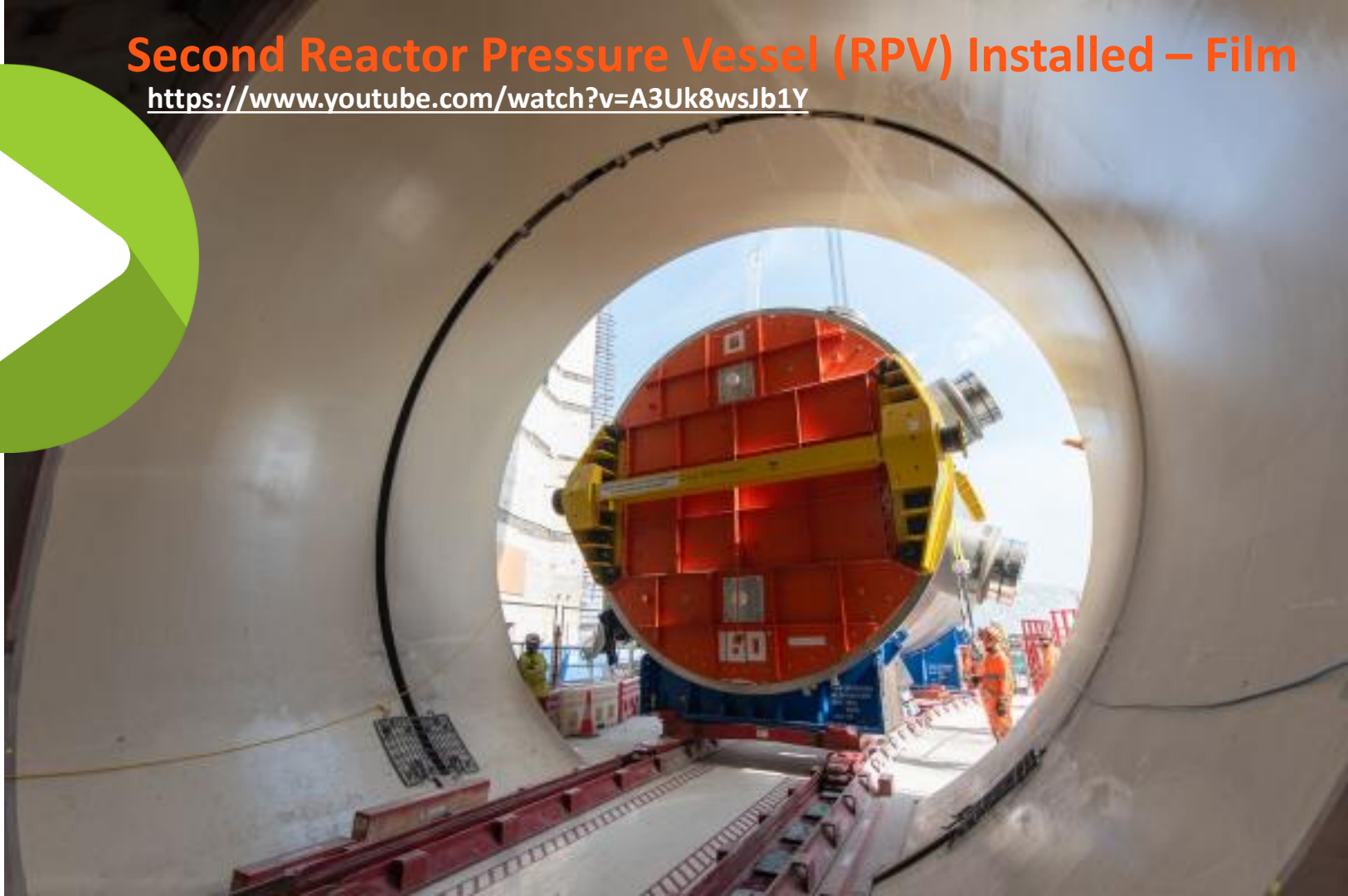
Progress - Virtual Tour



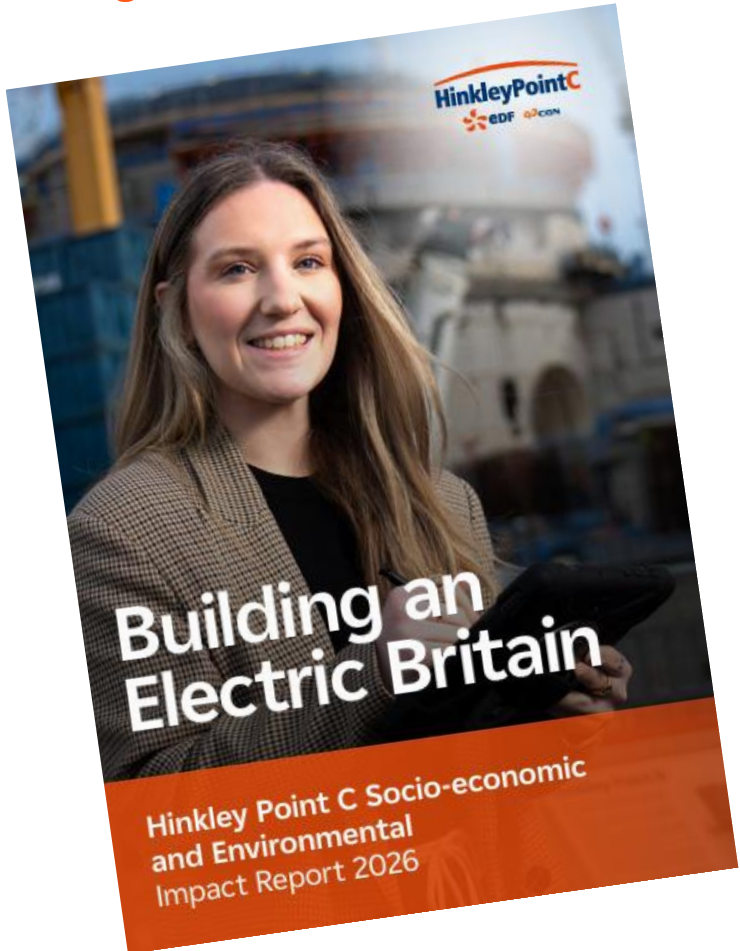
<https://www.youtube.com/watch?v=e011i4zJezM&t=17s>

Second Reactor Pressure Vessel (RPV) Installed – Film

<https://www.youtube.com/watch?v=A3Uk8wsJb1Y>



Delivering Socio-Economic Benefit



610,000
people

have benefited from the fund

£20 million
provided to local projects through the Community Fund

Delivering Socio-Economic Benefit

PEOPLE

19,500

people trained at Centres of Excellence so far

£24 million

invested in education, training and skills

£28 million

of direct and indirect grants for local projects through the Hinkley Point C Community Fund

1,740 apprentices

have been trained - exceeding a target of 1,000



“ challenges me in all the ways I had been craving”



“This apprenticeship has completely changed my working life. Before joining, I was in a dead-end retail job near where I lived. I knew I had more to offer and I was desperate for a change.

One day, I went onto the EDF Job Service website, applied for the apprenticeship - and got it. That really changed everything.

Now, I'm working within the Quality Assurance team, learning how to make sure nuclear specialists follow the right procedures and complete the correct paperwork during construction. My role helps maintain high-quality construction standards, and I find it fascinating. It challenges me in all the ways I had been craving.”

Jack Davis, 23, Watchet

Quality Assurance Apprenticeship

PROSPERITY

64%

of the value of Hinkley Point C will go to British suppliers

£13.3 billion

of Gross Value Added to the British economy every year

£5.4 billion

has been spent with South West businesses

26,000

jobs supported across the country during peak construction

LOCAL SUPPLIER CASE STUDY

AMS – Bridgwater

AMS Nuclear based in Bridgwater specialises in the design and manufacture of electrical instrumentation and control systems and environmental monitoring equipment. Following previous work, the company recently secured a new multi-million-pound contract for the supply of sampling and process equipment at Hinkley Point C.

The new contract also places the company at the highest level of the project's supply chain and reflects strong confidence in AMS Nuclear's technical capability.

The award is already shaping AMS Nuclear's development plans, with the company expanding its engineering and project delivery teams and investing in early-career pathways, including apprenticeships and degree-level opportunities. AMS Nuclear currently has two apprentices and is actively recruiting six more. This growth will support increasing demand while contributing to the development of high-value technical skills within the South West.

The company is now building on its experience at Hinkley Point C to support future projects, including Sizewell C and emerging technologies such as SMRs, where its system integration expertise is expected to play a key role.



2026



Areas Completed

- **Spatial Distribution Note**
- **Topic papers**
 - Accommodation
 - Workforce
 - Development
 - Community Safety
 - Environment
 - Health
 - Tourism
 - Transport
- **Engagement with community organisations and LCNs.**

March

- **Drafting of legal agreement (Heads of Terms) via new Section 106 agreement.**
- **Topic papers completed legal review before final submission.**

April

May/June/July

- **Approach to delivering uplifted mitigation measures and funding agreed to be agreed Strategic Planning Committee. (*Date TBC)**
- **Further updates to forums and LCNs**

Acoustic fish deterrent update

- **Hinkley Point C will have more fish protection measures in place than any other power station in the world** - with three separate systems required. These will include an Acoustic Fish Deterrent, Low Velocity Side Entry water intake heads and a Fish Recovery and Return System.
 - **Testing of the technology was carried out over the summer of 2025 in partnership with Swansea University.** The results show the system is highly effective.
 - Testing of a further low frequency device continue in laboratory trials with increasing confidence of positive results for an even broader range of species.
 - The high and low-frequency devices would collectively deliver more than originally envisaged within the DCO.
- A decision will be made this summer on the consenting route – either through a material change application or via the discharge of the conditions within the original DCO.**
- **We are working with regulators on discussions surrounding the need for any further compensation.**



Pre-submitted questions

- 1) “What action is HPC taking against HPC worker individuals who are not living in the Shurton, Burton, Knighton and Wick location and who are parking their vehicles in non designated locations; as they are in breach of their Code of Conduct agreement they signed up to as either a contractor or sub-contractor?”*
- 2) “What does HPC need to do to change the current buses coming through Shurton to a minibus? Especially during low peak times.”*

- submitted by Lidia Bosa, Local Resident

Pre-submitted questions

1) *“What is HPC doing to address the increasing traffic problems around the area, including the growing number of empty buses using local roads, fly parking in non-designated areas, and the emergence of unofficial “pop-up” parking locations?”*

This week, I spent approximately 20 minutes stationary behind two empty HPC buses while waiting for a tractor and trailer to reverse down the road so the buses could pass. Incidents like this are becoming increasingly common and are now a regular occurrence rather than an isolated event.”

- submitted by Gareth Glover, Burton Resident



Pre-submitted questions

“The parish council have again been contacted by residents re the use of the Public footpath at Shurton, adjacent to Bayleys Brook, by cyclists employed by HPC, using this as a short cut to your site.

The use of this footpath, with ‘ No cycling ‘ signage, which is being ignored by many of these cyclists, is putting our residents at risk - particularly when electric bicycles are involved .

It would seem that the majority of these cyclists appear to come from your site at Mill Farm - as there is quite easy access through the lanes from this site to Stogursey village and from there to Shurton.

This is particularly worrying due to the fact that HPC / EDF have applied for planning permission to increase the size of Mill Farm to permit accommodation for a further 100 workers. This could result in even more cyclists using this footpath inappropriately.

We look forward to a solution to this issue - which has cropped up frequently over the last few years - and could possibly be solved by banning your employees at Mill Farm from cycling to work and using the bus transport provided at cost by HPC / EDF.”


- submitted by Sue Goss, Vice Chair Stogursey Parish Council

Item 4: Planning Update

Richard Clews

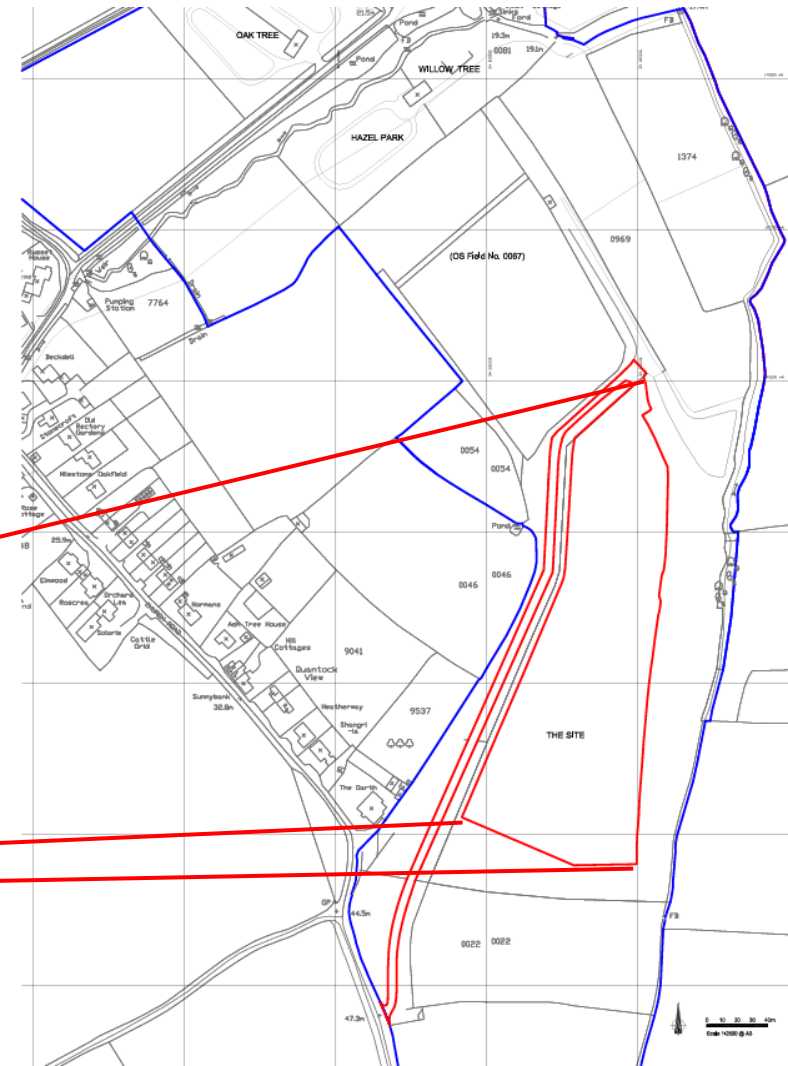
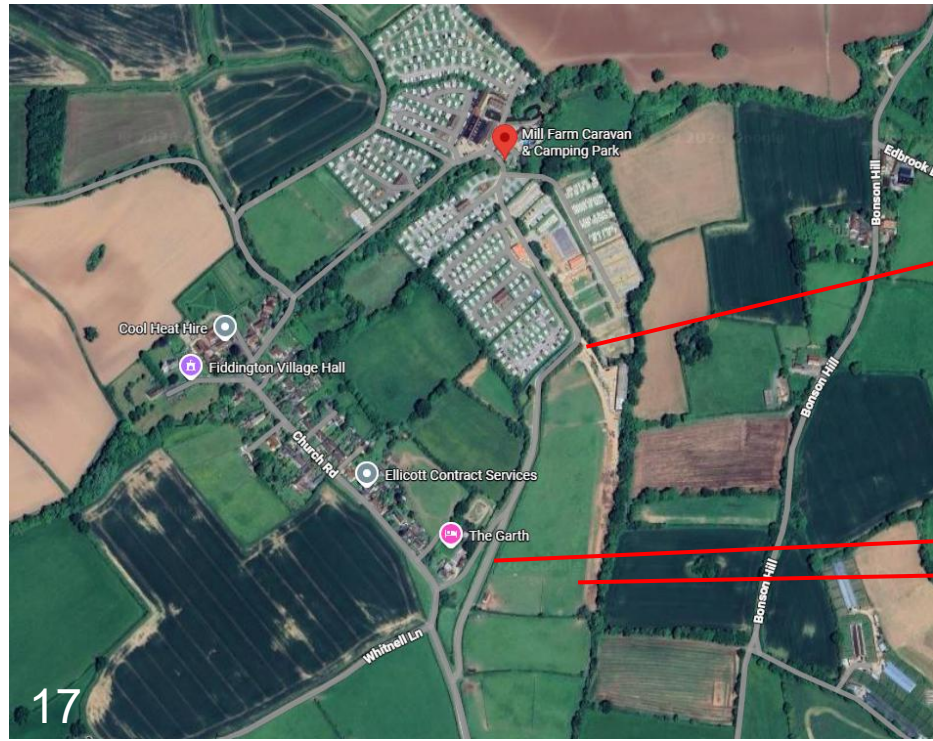
Previous Update - Recap

Discussed a number of matters being considered at the end of 2025 and through 2026:

- Extended use of temporary jetty (Article 82 DCO)
- Pixies Field emergency parking
- Stockpile height reduction
- Updates to:
 - Operational Noise Monitoring Updates
 - Material Management Plan (to allow blending);
 - Remediation Strategy
 - Ecological Management Plan; Habitat Management Plan
- **Mill Farm 100 pitches was pending submission** 
- Future DCO applications:
 - MS8 – Permanent Fence
 - **MS28 – Landscape Restoration** 
 - MS31 – Coastal Path
 - MS32 – Permanent Signage
 - MS39 – Operational Travel Plan

Mill Farm: Location

- Application submitted to Somerset Council in May 2026.
- Decision expected in September 2026.
- Expected start on site following decision.

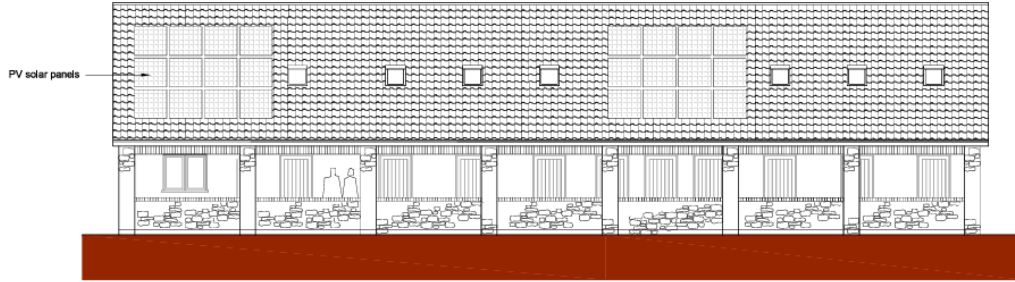


Mill Farm: Layout

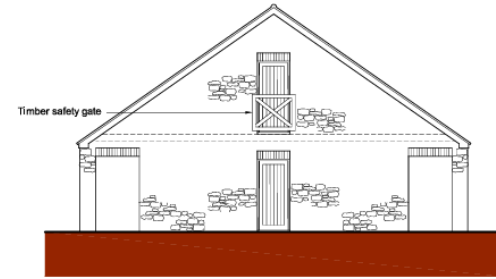
- Additional 100 plots within a landscaped setting.
- For year-round tourism and use by HPC for five years.
- On-site biodiversity net gain.
- Recreation area.
- Amenity building containing toilets, showers, washing facilities.
- Each plot provides for one caravan and one car.
- Direct bus service as per current arrangements.



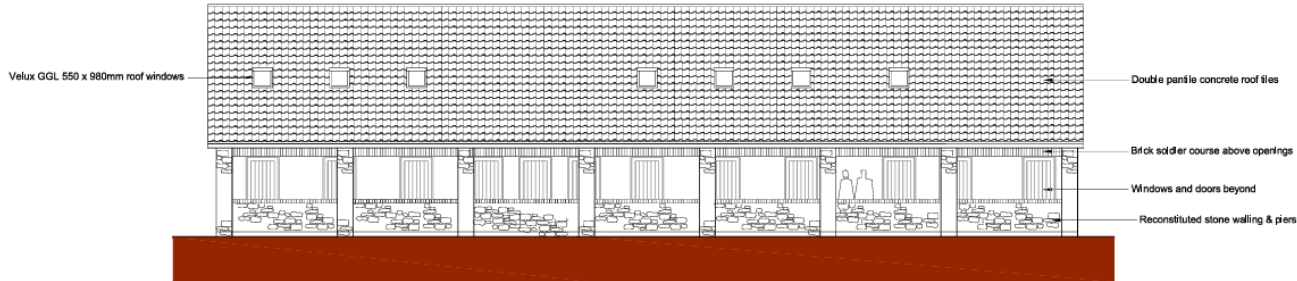
Mill Farm: Amenity Building



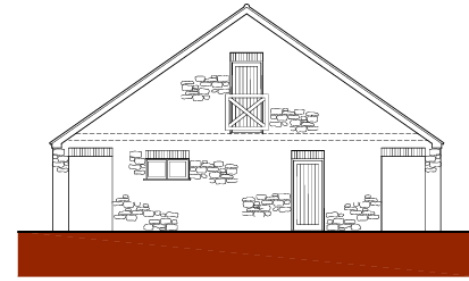
South East (Rear) Elevation



North East (Side) Elevation



North West (Front) Elevation



South West (Side) Elevation

DCO Requirement MS28

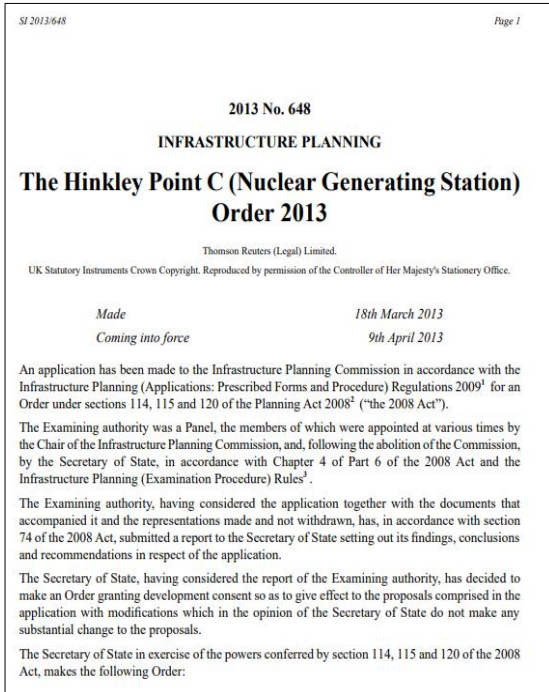
MS28

Landscape works: landscape restoration

(1) Within six months of Unit 1 entering operation, a landscape scheme for the landscape restoration area shall, following consultation with Natural England, be submitted for the approval of West Somerset District Council. Unit 2 shall not enter operation until this landscaping scheme has been approved. The landscape scheme shall be in general accordance with sections 3 and 4 of the Hinkley Point C Landscape Strategy and must include details of—

- (a) location, number, species, size and planting density of any proposed planting;
- (b) cultivation, importing of materials and other operations to ensure plant establishment;
- (c) proposed finished ground levels;
- (d) hard surfacing materials;
- (e) vehicular and pedestrian access, parking and circulation areas;
- (f) landscape maintenance buildings, street furniture, refuse or other storage units;
- (g) details of existing trees to be retained, with measures for their protection during the implementation of the landscape works;
- (h) removal and restoration proposals for the north-west bund [...] ⁸ ;
- (i) plant establishment, maintenance and management arrangements;
- (j) implementation timetable for the landscape works, including details of the phased removal of temporary construction related development; and
- (k) removal and restoration proposals for the HPC Accommodation Campus (Work No. 3).

(2) The landscape works must be carried out in accordance with the approved landscape scheme referred to in paragraph (1) and in accordance with the relevant recommendations of appropriate British Standards.



Recap

DCO Approved Landscape Master Plan

Area of focus for partial discharge
or early agreement of approach /
scheme.

Future preparations, engagement
and submission of details

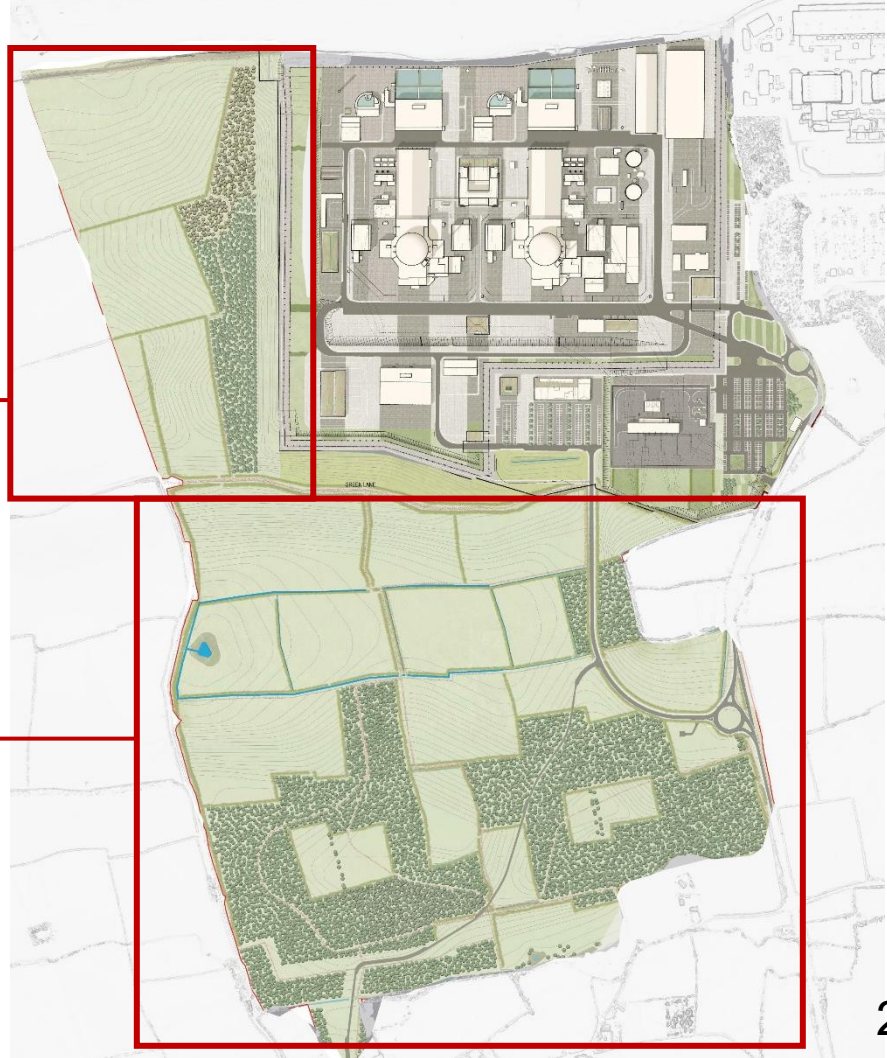
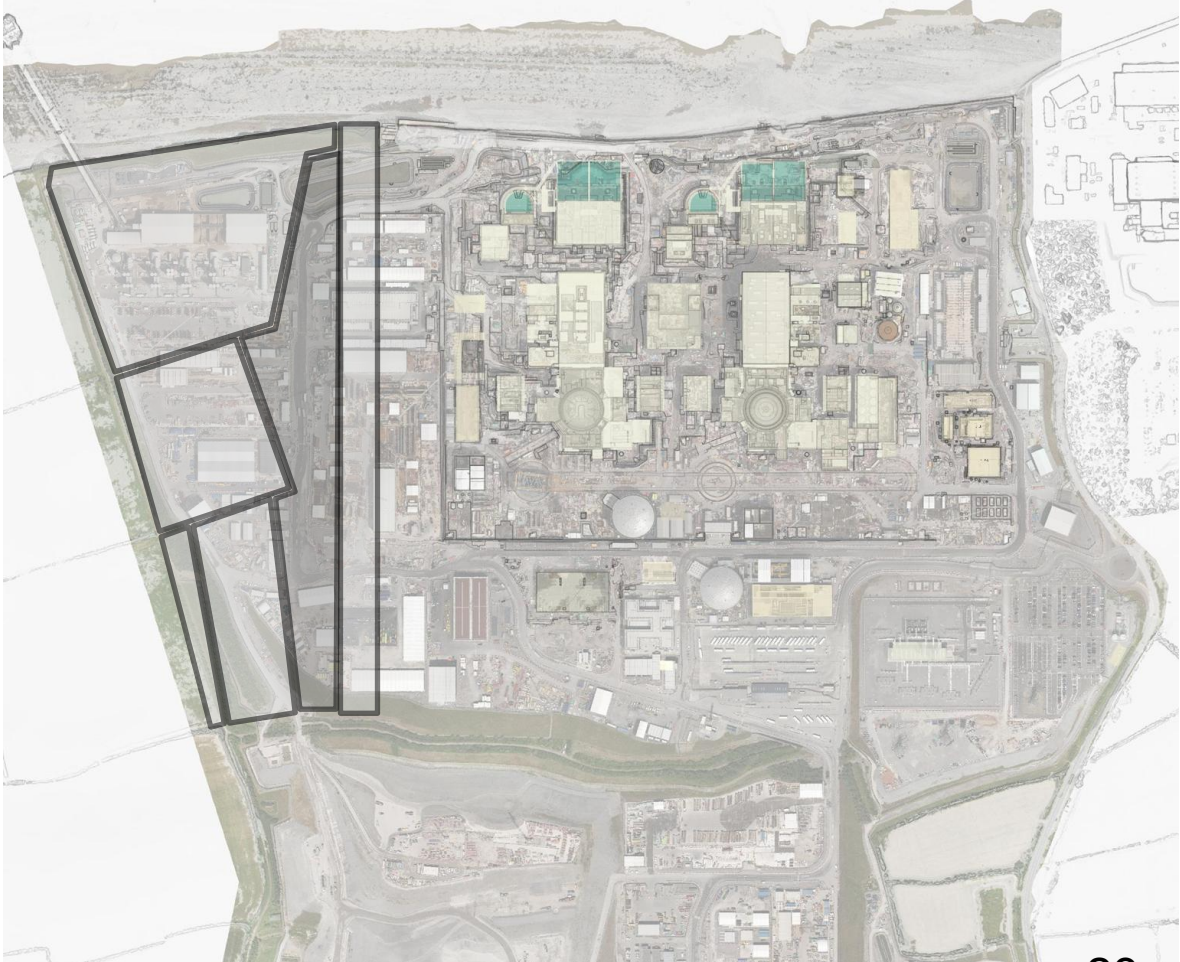
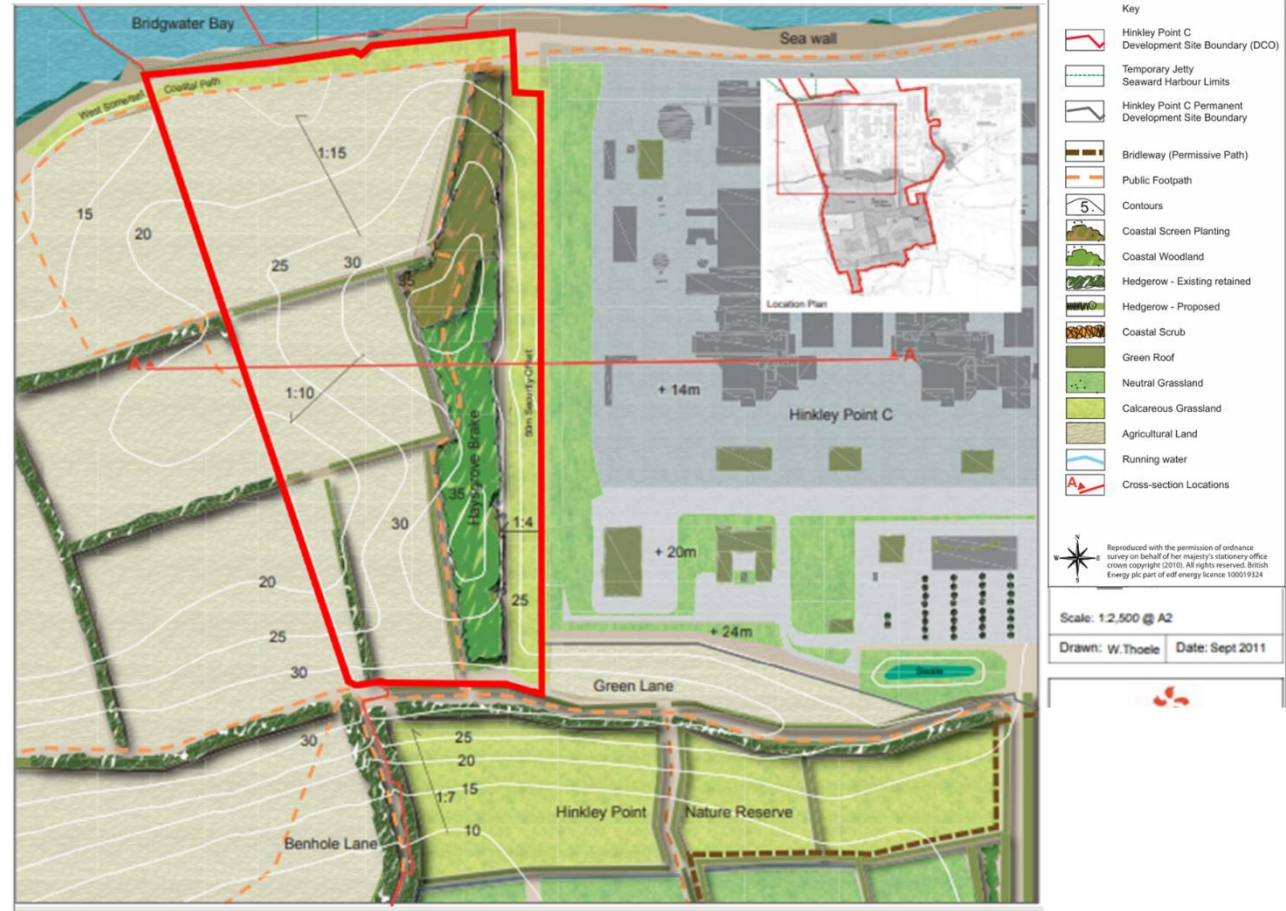


Image with construction project in the background



2011 Proposal

- Coastal screen planting and woodland boundary following field lines
- North-south footpath runs partly through coastal woodland/screening
- Culverted ditch
- Proposed hedgerows creating smaller field parcels



2026 Proposal

- Rationalised field boundary
- Relocated footpath
- Open stream/ditch rather than culvert
- Rationalised proposed hedgerows to form larger parcels



MS28 – Landscape Restoration

Report prepared by Mott MacDonald to discharge the requirements of MS28 (and part of MS27), setting out and assessing the proposals for the northwest corner. It includes detailed proposals and methods of work.

The report considers:

- Landscape Character Areas
- Mitigation proposed in the Environmental Statement
- Viewpoints (47 views)
- Construction phase impacts
- Heritage
- Terrestrial ecology and ornithology
- Agriculture, soils and land use
- Recreation and amenity
- Drainage
- Noise

The report assessed the following matters for restoration:

- Landform
- Planting proposals
- Drainage
- Amenity and Recreation
- Biodiversity

MS28 – Landscape Restoration

Landform Map

Key:

Red = decreasing height

Green = increasing height

- The boundary bund is around 23m – 29m at present, the adjacent hall roads are around 26m.
- The completed landscape will peak at around 34m.
- Drainage will be an open watercourse. It will allow for a 1 in 30 year event + 40% for climate change.
- The landscape strategy will deliver significantly enhanced biodiversity compared to the mainly low biodiversity value of the previously agricultural land.
- Works will comply with noise conditions imposed on the restoration and reinstatement phases.



Western bund

Current proposals require the removal of the planting and the bund in order to facilitate the works. We will be seeking consent from the authority under MS27 when submitting MS28.



Bund removal sequence:

- Ecological inspection of the area;
- Topsoil stripping;
- Subsoil stripping;
- Bulk excavation; and
- Excavation below and adjacent to the bund to remove services and below ground obstructions.

Restoration sequence:

- Use stockpile to achieve ground levels -1m;
- Selected fill up to 450mm;
- Subsoil and topsoil for upper 450mm;
- Reinstatement of hedgerows and fields;
- Removal of security fence;
- Excavation of foundations;
- Placement of soil;
- Localised finalisation of hedgerow and field planting; and
- 5-year aftercare regime.

Impact Assessment of Proposals:

All construction phase mitigation identified in the ES is presently in place and will remain so during the restoration works. Consent will be sought in relation to the bund.

All operational phase mitigation is proposed, including:

- Connection to the coastal path via the western boundary and
- Restored connection to Green Lane

There is a slightly different alignment of the landscaping compared to 2011. This reflects a slightly altered woodland boundary, following discussions with Fairfield Estate to enable more efficient farming operations and remove awkward field boundary corners.

PROW proposals have been discussed with the Rights of Way officer.

Pre-submitted questions

2)

“Why is HPC supporting a number of campsites in the local area when the campsite closest to the HPC site received no support from HPC during its recent planning application?”

Could HPC explain the criteria used when deciding which local campsites or accommodation providers receive support, and why the nearest campsite was not included?”

- submitted by Gareth Glover, Burton Resident

Questions

Item 5: Developing the HPC Legacy Strategy

Andrew Cockcroft

A long-term legacy discussion

- Working together with our local partners and communities we have an opportunity to use the construction of Hinkley Point C to provide much longer lasting benefits for Somerset.
- Initial work has begun to develop a wide-ranging legacy strategy that will consider every aspect of our current programme and consider the best options available.

OUR PURPOSE

To deliver a positive and enduring legacy for people, place and the environment.

OUR APPROACH

Collaborating across programmes and with our stakeholders to maximise long-term benefits.

OUR COMMITMENT

Responsible decisions today for a sustainable tomorrow.



Item 6: Any other business

Chair

Item 7: Date of next meeting

Main Site Forum: Thursday 15th October 2026 at 6pm

Next dates for the Community, Main Site and Transport Forums in 2026

All 6pm start and on Thursdays

Community Forum	15 th January / 14 th May / 17 th September
Main Site Forum	12 th February / 4 th June / 15th October
Transport Forum	12 th March / 25 th June / 12 th November

www.edfenergy.com/hpccommunity

Thank You