

## LOCAL NOTICE TO MARINERS No. 12 OF 2026

### Hinkley Point C Marine Works

#### Benthic camera survey 06<sup>th</sup> May – 13<sup>th</sup> May 2026

Issued: 28/04/2026

### Benthic Camera Survey Notice to Mariners

### Hinkley Point C Habitat Mapping

Date: 6<sup>th</sup> May 2026 onwards

From: Head of Survey

### Contact Details

#### Ocean Ecology Ltd Head of Survey

Name: Ashley Kirby

Email: Ashley.kirby@dnv.com

Telephone: 01452 740 697 or 01452 915 698

#### Ocean Ecology Ltd Operations Director

Name: Gary Robinson

Email: gary.robinson@dnv.com

Telephone: 01452 740 697 or 07969 559 716

### Overview

Please be advised that from 6<sup>th</sup> May 2026 Ocean Ecology Ltd (OEL) will be undertaking an ARIS drop down surveys within a 9.7 km<sup>2</sup> area in the Bristol Channel, shown in Figure 1. These works are part of the Hinkley British EDF Energy Estuarine and Marine Studies (BEEMS) programme carried out by Cefas to implement and support surveys for nuclear new-build power stations in the UK on behalf of NNB Generation Company (HPC) Limited. The survey will employ the use of an ARIS system which will be deployed in a frame to ground truth the extent and distribution of the protected, reef building Ross worm (*Sabellaria spinulosa*). The vessel will be restricted manoeuvrability during live survey operations; an exclusion zone of 100 m is requested at all times. The works will be completed by personnel from OEL on *Seren Las* which will mobilise from Penarth Marina. Full vessel details are presented in Table 1. The vessel will maintain a continuous listening watch on VHF Ch 16, Ch 17 and Ch 87.

The survey will be carried out on a continuous daily basis, working 12-hours per day pending weather. Upon adverse weather conditions, if the *Seren Las* is not able to remain on site, it will seek shelter or return to Penarth Marina.

This notification is intended for circulation to all interested parties undertaking or managing activities in the vicinity of the planned survey works. If you would like further details regarding the surveys, please contact the OEL Head of Survey, Ashley Kirby using the contact details at the head of this communication.

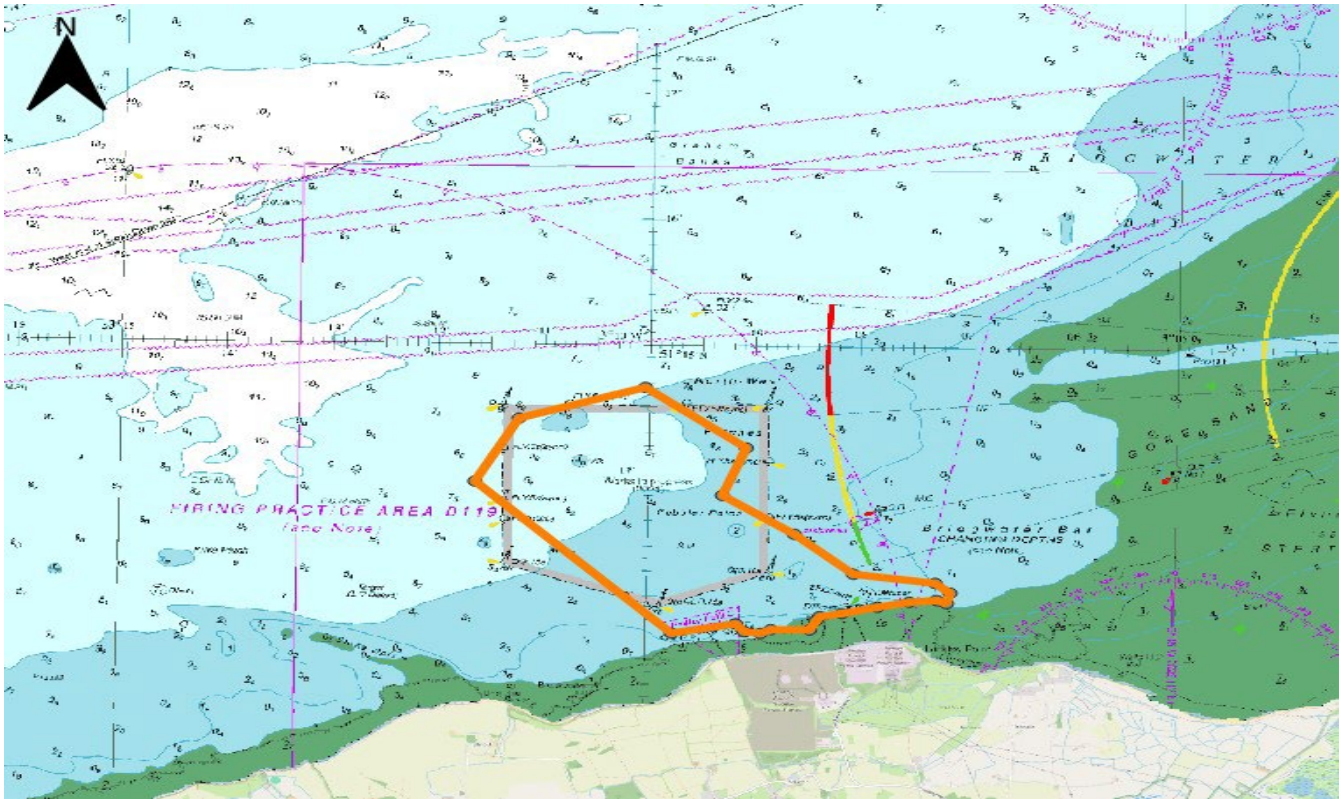
**Table 1** Vessel Details

Vessel Name	Seren Las	
Vessel Call Sign	MDAH2	
MMSI	235087047	
Length	10.0m	
Survey Coordinator	Ashley Kirby (Head of Survey) +44 (0)1452 915698	
Vessel Contact	Jack Findlater (Vessel Coordinator) +44 (0)1452 947515	

## Survey Locations

**Table 2** Coordinates defining general survey area for SSS and ARIS operations near Hinkley Point C, in the Bristol Channel. All coordinates are in WGS84.

Point ID	Latitude (DD)	Longitude (DD)	Latitude (DMS)	Longitude (DMS)
1	51.217555	-3.118747	51° 13' 3.2"N	003° 07' 7.49"W
2	51.216159	-3.119271	51° 12' 58.17"N	003° 07' 9.38"W
3	51.216549	-3.120836	51° 12' 59.58"N	003° 07' 15.01"W
5	51.216283	-3.125156	51° 12' 58.62"N	003° 07' 30.56"W
6	51.215576	-3.130131	51° 12' 56.07"N	003° 07' 48.47"W
7	51.214683	-3.135769	51° 12' 52.86"N	003° 08' 8.77"W
8	51.214226	-3.139271	51° 12' 51.21"N	003° 08' 21.38"W
9	51.213681	-3.139816	51° 12' 49.25"N	003° 08' 23.34"W
10	51.212457	-3.140775	51° 12' 44.84"N	003° 08' 26.79"W
11	51.212430	-3.146904	51° 12' 44.75"N	003° 08' 48.85"W
12	51.211922	-3.148498	51° 12' 42.92"N	003° 08' 54.59"W
13	51.212113	-3.151039	51° 12' 43.61"N	003° 09' 3.74"W
14	51.213153	-3.152440	51° 12' 47.35"N	003° 09' 8.78"W
15	51.211811	-3.162550	51° 12' 42.52"N	003° 09' 45.18"W
16	51.231722	-3.194030	51° 13' 54.2"N	003° 11' 38.51"W
17	51.240163	-3.187274	51° 14' 24.59"N	003° 11' 14.19"W
18	51.244433	-3.167437	51° 14' 39.96"N	003° 10' 2.77"W
19	51.236528	-3.151330	51° 14' 11.5"N	003° 09' 4.79"W
20	51.230194	-3.154965	51° 13' 48.7"N	003° 09' 17.87"W
21	51.225146	-3.143489	51° 13' 30.53"N	003° 08' 36.56"W
22	51.219913	-3.134032	51° 13' 11.69"N	003° 08' 2.51"W



**Figure 1** Map to show general survey area for SSS and ARIS operations near Hinkley Point C, in the Bristol Channel.



### Gloucester (Head Office)

River Office,  
Sevenside Park, Epney,  
Gloucester, GL2 7LN

### Oban

European Marine Science Park,  
Malin House, Dunbeg,  
Oban, PA37 1SZ

### Plymouth

Plymouth Science Park,  
Plymouth, PL6 8BX

Unit 8 Strashleigh View,  
Lee Mill Industrial Estate,  
Plymouth, PL21 9GS

+44 (0) 1452 740697   info@ocean-ecology.com   www.ocean-ecology.com   @Ocean\_Ecology

