

Welcome

Agenda – Community Forum – 21st September 2023

1. Welcome and introductions - (Chair)
2. Meeting note / matters arising from last Forum held on: 18th May 2023 - (Chair)
3. Project Progress Update - (Andrew Cockcroft, Anne Lawrence, EDF)
4. Update: HPC Education Outreach – (Megan Thomas, EDF)
5. Update: Office of Nuclear Regulation Report – (Alun Griffiths, ONR)
6. Update: Community Fund - (Justin Sargent, Somerset Community Foundation)
7. Main Site Forum Update - (Chair)
8. Transport Forum Update- (Chair)
9. Any other business - (Chair)
10. Date of next meeting 18th January 2024

Item 3: Project Progress Update

Andrew Cockcroft

Senior Manager – Community Relations

Anne Lawrence

Head of Site Nuclear Compliance

Safety and Learning



- Environment Week held from 11th – 15th September
- Focus on waste, energy use and pollution prevention

The Path to Dome Lift

To achieve Dome Lift focus is on four key areas:

1. Completing the internal civil structures
2. Introducing key equipment
3. Preparing the Dome ready for lifting
4. Building and lifting in the Polar Crane

Internal Civil Structures

- Crane has now been removed from the centre of Unit 1.
- Focus is on getting the **+19.5m level** slab finished which is a precursor to Dome Lift.
- In addition, work must be completed on the **Ring Walls** (located on the outer circumference of the internal structures).
- Rebar placement, formwork erection and several concrete pours occur each week to progress the structures which will 'hold' components of the Nuclear Steam Supply System in place.



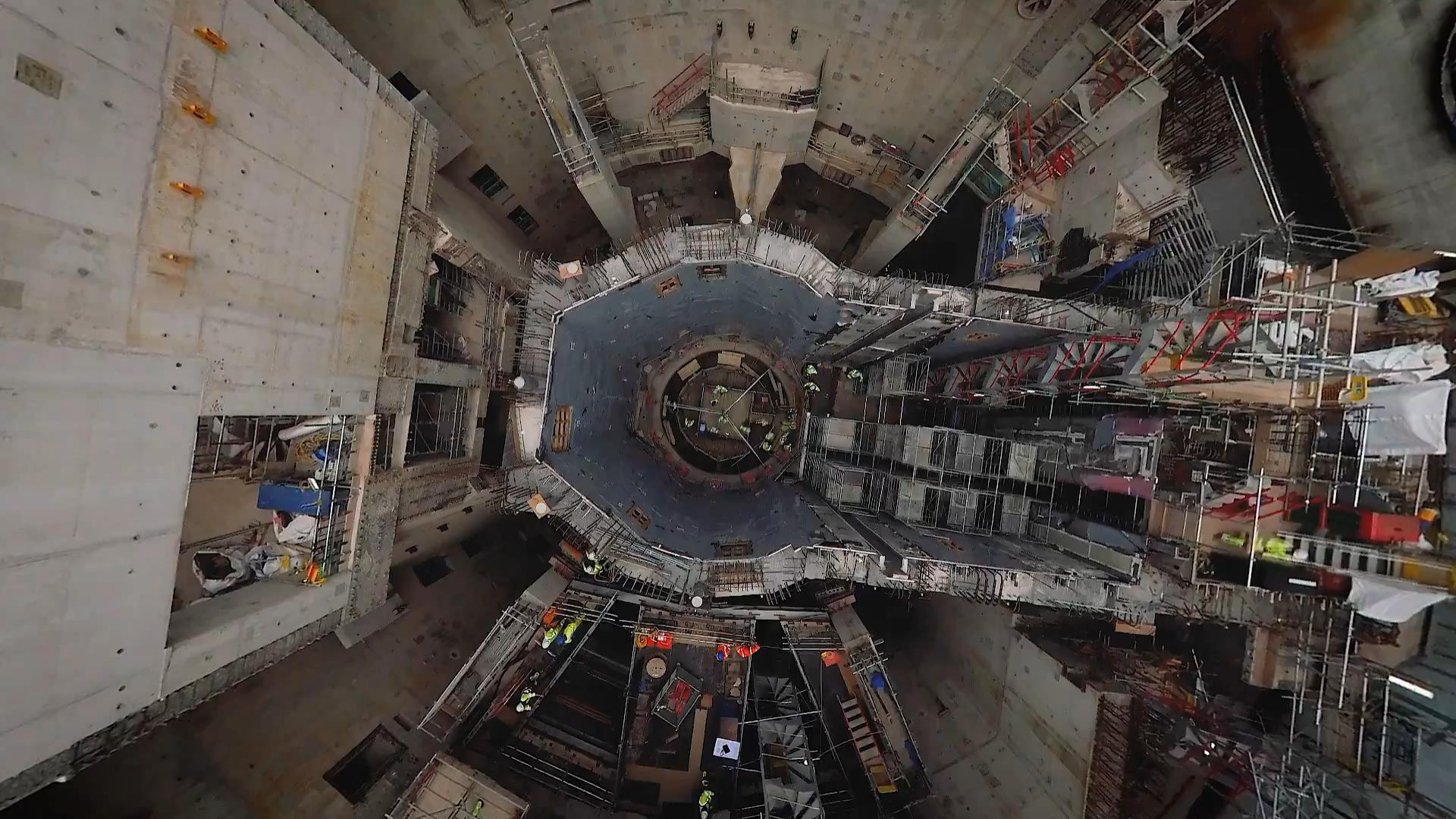
Project Progress – Virtual Tour



Hinkley Point C

site tour





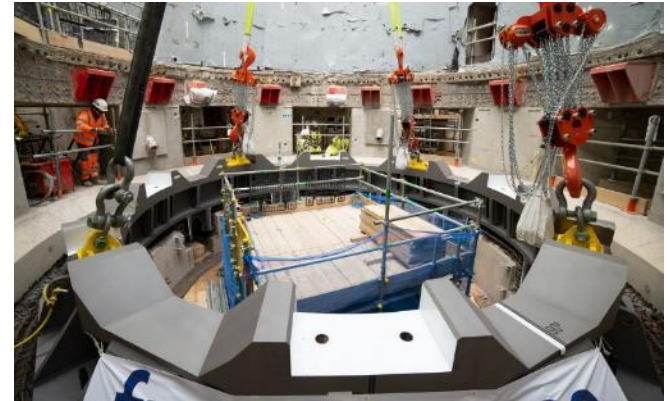
The Path to Dome Lift

Equipment introduction

- Several pieces of key equipment are required to be installed prior to Dome Lift.
- In August, the Reactor Pressure Support Ring was lifted into the building as well as the third accumulator for the emergency cooling system.

The RPV Support Ring supports the Reactor's position in the Reactor Pit.

It's the first piece of permanent equipment manufactured by Framatome to be introduced into the reactor building.



The Path to Dome Lift

Assembling and preparing to lift the Polar Crane

- Work on the Polar Crane assembly is taking place in the large white building opposite the Simulator Building.
- The Crane will swivel around the Dome to manoeuvre heavy components during construction and then be used for maintenance and refuelling.

Progress

- The crane is taking shape and Mechanical & Electrical fit out well underway.
- 4x bogies and 2x cross members assembled and Quadrilateral formed.
- In the past few weeks giant trolleys have been lifted into the enclosure. These will run up and down the crane's two large beams on rails.



Turbine Hall

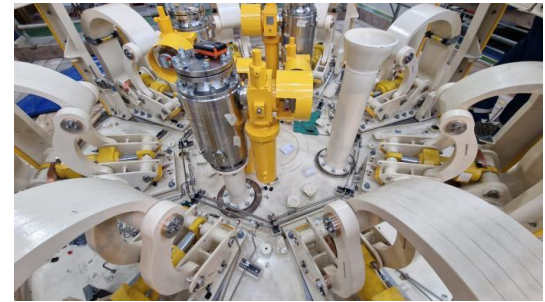


Turbine Hall – Internal Crane



- The 300t crane trolley made the journey from Combwich earlier this month.
- The crane will live at the top of the Turbine Hall and will be used for installation and maintenance of the Turbine.
- The crane is being assembled by Fayat in Avonmouth, Bristol.

Marine Works



- The first of six Isolation Caps have been delivered.
- Each one consists of around 33 tonnes of high tech, first of type engineering.
- The caps have two important functions during construction and commissioning:
 1. Preventing water from entering the tunnels while the team completes the work to connect the tunnels to the heads sitting on the seabed.
 2. Allowing water from the Bristol Channel into the system, leading to the filling of the tunnels and ultimately flooding the forebay. Therefore, this delivery takes us one step closer on our Mission to Commission Hinkley Point C.
- Each Isolation Cap will be integrated into the giant steel Liners at Portbury, ready for placement into the seabed in the coming months.



Planning Updates – Caravan Sites

Mill Farm

- **Application approved** for 58 additional pitches and continued use of 53 existing pitches by HPC workers – conditions being discharged.
- **Screening Opinion submitted** for regularisation of fields to allow all-year round tourism and temporary use of existing pitches for HPC workers – note no increase in pitch numbers.
- **Application to be submitted** shortly by landowner with HPC providing planning support.

Quantock Lakes

- **Application being considered by the Council** for provision of around 100 additional caravan pitches for HPC workers.

Moorhouse Farm

- The tenants of Moorhouse Farm have **submitted a planning application independently of HPC** to the Council.
- The application looks to provide an additional 115 pitches that could be used by HPC workers if approved.



Planning Updates – Associated Development

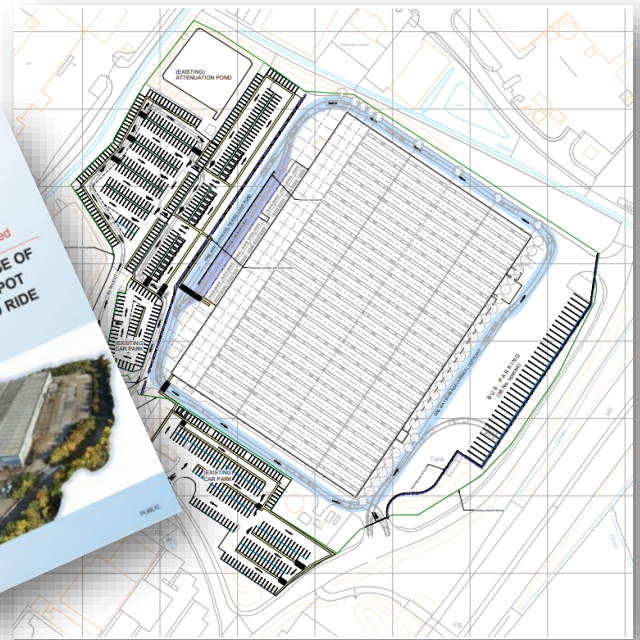
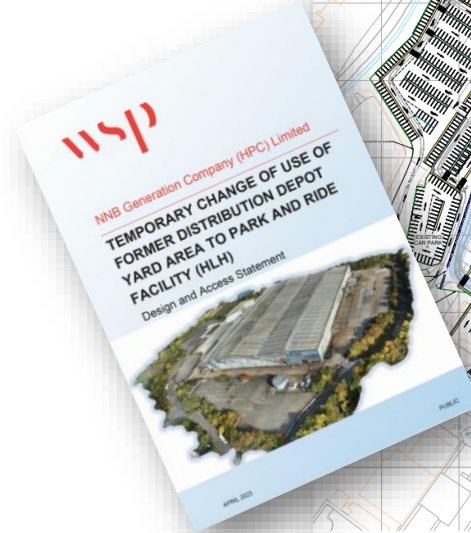
Sedgemoor Campus – additional car parking

- **Application has been approved** for 340 car parking spaces.



Combwich AIL Bypass

- Application for a temporary AIL bypass track within the existing Combwich Construction Compound is **being considered by the Council**.



Hinkley Logistics Hub

- HPC's application for the **Junction 24 Logistics Hub has been approved**.
- Additional Parking for around 600 cars will provide HPC with additional spaces at peak of construction;
- The facility helps us to achieve a better distribution between J23 and J24 whilst work at Dunball Roundabout is undertaken.

DCO Material Change Application

- In simple terms, an application to make changes to Hinkley Point C's original Development Consent Order application.
- The application will comprise the following 7 elements:
 1. Removal of requirement to install an Acoustic Fish Deterrent
 2. Compensation measures as a result of the removal of AFD
 3. Changes to Interim Spent Fuel Store
 4. Removal of building and replacement with Equipment Storage Building
 5. Changes to Meteorological Mast
 6. Retention of Hinkley Point Substation
 7. Addition of Sluice Gate Storage Structures

Location of the proposed changes



Interim Spent Fuel Store and Equipment Storage Building

- A change from a 'wet' interim spent fuel store to a 'dry' interim spent fuel store, and associated increase in the building's size.
- The change includes replacement of the previously proposed access control building with a new equipment storage building.



Original

150m x 65m x 25m



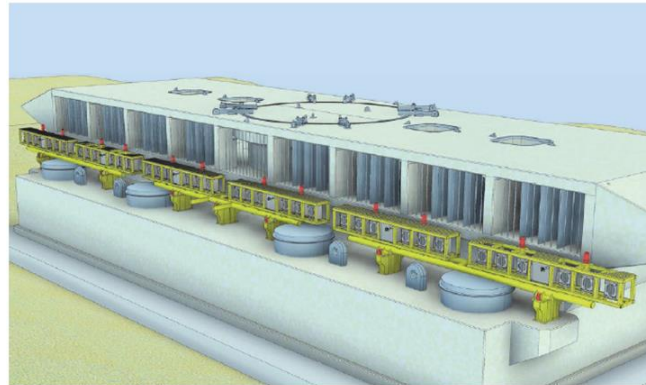
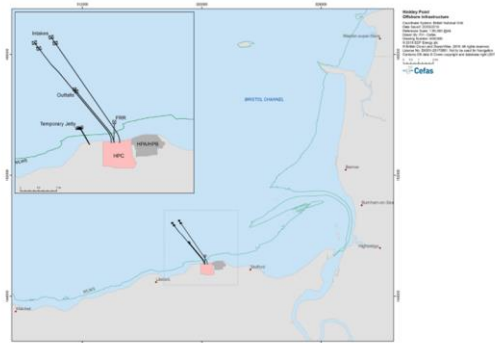
Proposed

229m x 73m x 30m



Acoustic Fish Deterrent System

- The acoustic fish deterrent offers a very small potential benefit to protected species and would risk the safety of divers in the fast-flowing tides of the Bristol Channel.
- We are working with Natural England, Natural Resources Wales and the Environment Agency to develop proposals for new habitats that will compensate for the risk of any potential impact on protected fish species.



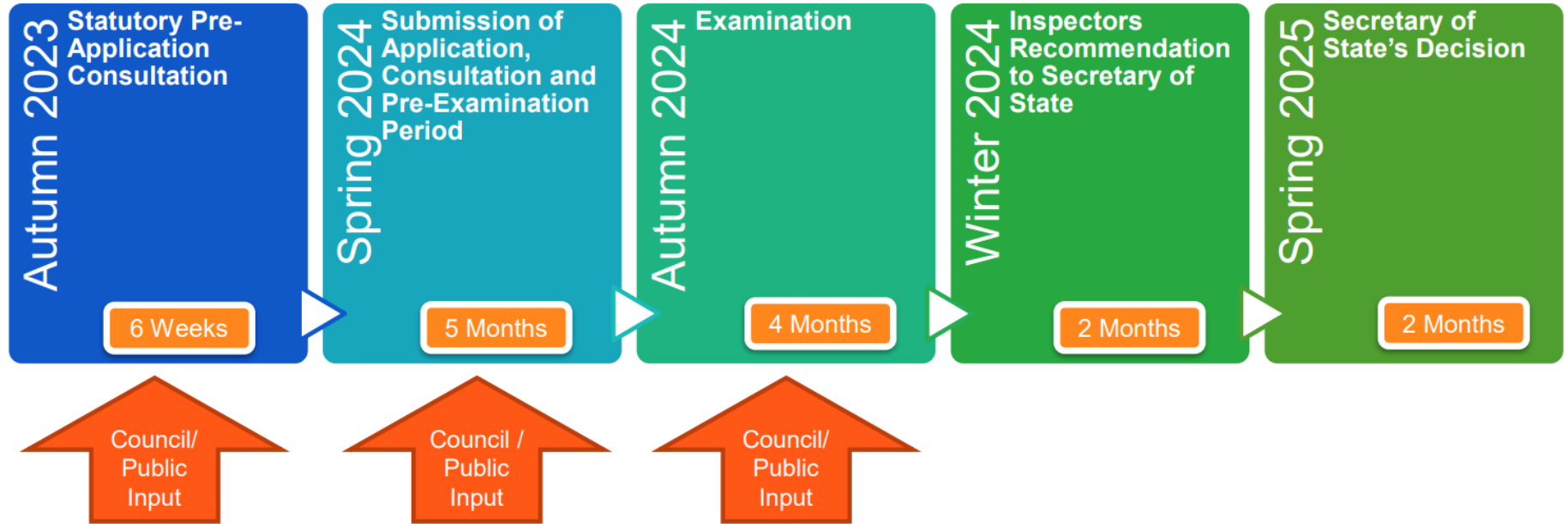
Habitat Compensation Package

Emerging Proposals include;

- Saltmarsh
- Sea Grass
- Kelp Forest
- Oyster Beds
- Weir / Barrier Removal



Indicative Timetable



Consultation

In addition to the statutory consultation requirements, we intend to:

- Hold several drop-in events in the locality
- Present at our regular HPC public meetings
- Use HPC social media channels to promote the application
- Host the application documents on our website (in a 'virtual room')
- Meet regularly with key stakeholders, both informally and through our regular formal meetings, such as our Marine Technical Forum



Thank You

Pre-submitted Questions

- *It is now 6 months since I asked a question about the state of the C182 and subsequently received an answer stating that a further Deflectograph survey was due and that the last survey - in 2021- showed that it was in a good structural condition except for a short area between the Shurton junction and HPC (which has apparently since been rectified). However, the stretch of road between Idson Lane and the Shurton junction remains hazardous to vehicles -apparently due not surfacing issues- but possible underlying structural problems (which do not seem to be related to previous road widening of this section - but are more widespread across the whole of the carriageway - particularly the section through Wick Wood.) It would be helpful to have the results of the 2023 Deflectograph survey at this meeting, rather than have to wait until the next Transport Forum meeting.*

- Submitted by Sue Goss, Stogursey Parish Council

Pre-submitted Questions

- *Regarding the Agenda, I'm surprised that EdeF has provided no opportunity for a brief report and discussion on the Community Forum of 7th September 2023, called to enable Forum members to engage with members of the Dutch delegation investigating HPC prior to a possible new build by EdeF at Borssele in Zeeland. Why has that happened and can time be found for that at this Forum?*
- *Regarding the DCO Material Changes Application, a 'Marine Technical Forum' is referenced. Please would you enlighten us on the attendees and whether its discussions etc are in the public domain?*
- *Following a 'no fault' Police report on the accident with the HPC bus, what reassurance can EdeF offer that steps have been taken to avoid a repetition of that accident?*
 - Submitted by Roy Pumfrey, Stop Hinkley

Item 4: HPC Education Outreach Update

Megan Thomas

Hinkley Point C Education and Outreach Lead

Hinkley Point C's Educational Programmes



- Launched in 2010
- Aimed at those aged 16 & below
- StemWorks Workshops, Mock Interviews, Careers Fairs
- Digital resources inc. Virtual Work Experience Programme
- Support over 40 schools across the South West
- Delivered 30x events in 2022



- Launched in 2016
- For those aged 16 – 21
- Fast track programme: exclusive events, careers workshops & fairs, curriculum insight talks
- Support 15 FE settings & 10 HE settings across the South West
- 680 people signed up to YHPC, 380 of these are aged 16-21
- Delivered 73x events in 2022

January 2023 – September 2023: Education Outreach



3x Inspire workshops delivered by Stem Works
and our **Virtual Work Experience Programme** which will launch in October 2023



25x other events for those aged 14-16
Including: SomerScience & Cheltenham Science Fest



49x YHPC age range targeted events
Including: Yeovil College Construction Expo & Weston College Careers Fair



77x events in total since January 2023
Including: 70x face to face events and 7x virtual events



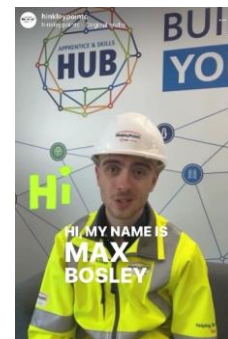
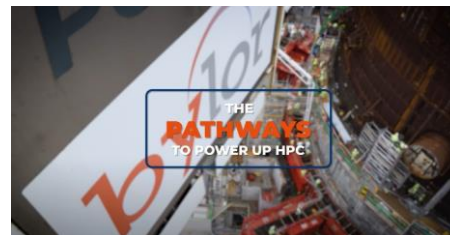
28x different event locations have been covered
including: 10x Schools, 10x Colleges and 3x Universities
(others are mixture of virtual and events with multiple locations not related to educational settings)



Over 20,000 young people engaged
with the Education Outreach Team since 2021




30x Young HPC posts created for social media
Including Pathway cut downs, 'Day in the Life' style videos and targeted apprenticeship ads



Educational programmes – September 2023 onwards

- Inspire will focus on its digital offering with more lesson plans and digital resources being developed. Workshops and events taking place in collaboration with the HPC Visits Team.
- Focus continues on Young HPC as a key driver of supporting young people into further training and long term careers.
- Aim is to increase 16–21-year-old registrations to YHPC; bringing more young people onto the project
- Building a strong brand for YHPC internally and externally

Why join Young HPC?



HinkleyPointC
Helping Britain Achieve Net Zero
EDF CGN

**Register to
YOUNG
HPC**

Young HPC is our skills and development programme to fast-track young people onto the Hinkley Point C Project.

- Get access to exclusive behind the scenes content from across the project
- Be the first to hear about new and exciting opportunities on the project
- Careers tools, support and advice to support your apprenticeship and/or job applications

Scan the QR code to register today!

YOUNG HPC

The Future of Young HPC

Behind the scenes with Team HPC – YHPC Podcast



Bringing the project to life!



New digital resources



Continue to build strong relationships

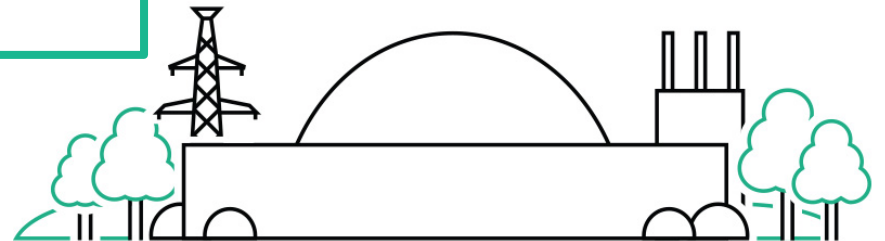




Item 5: Update: Office of Nuclear Regulation Report

ONR Community Forum Report Highlights

Alun Griffiths
September 2023 Update



ONR Report Q2/3 2023

In this period, routine inspections of the Hinkley Point C site covered the following:

- plant construction and/or commissioning;
- emergency preparedness;
- nuclear safety committee functioning
- quality assurance and records;
- organisational capability, including the function of the Internal Regulator;
- conventional (non-nuclear) health and safety, including life fire safety;
- security

ONR Report Q2/3 2023

ONR continues its engagement with the project via regular site inspections, visits and meetings at NNB GenCo (HPC) Ltd's offices and supplier locations across the following themes:

- design and safety case;
- organisational capability (including supply chain and quality);
- pre-operations;
- conventional health and safety and fire safety; and
- security.

These inspections, along with routine contact with other international regulatory bodies provide ONR with valuable intelligence on the progress NNB GenCo (HPC) Ltd is making developing its competence and capability to manage the design, procurement, and construction of HPC and will inform future permissioning decisions.

Permissioning

- ONR has issued a specification that the licensee shall not commence installation of the reactor pressure vessel in the HPC unit 1 nuclear island without the consent of ONR.
- Inactive commissioning will also be a major permissioning point, using primary powers. In relation to this, formal ONR assessment of the supporting safety case has commenced.
- In advance of these major permissioning points ONR will apply flexible permissioning to allow the start of a number of other activities including the lifting of the dome onto the unit 1 Reactor Building.

Non-routine matters

- The investigations into the tragic fatality that occurred on site in November 2022 and the separate event at site that resulted in a worker sustaining injuries as a result of a rebar mesh wall falling continue.
- At this time, we are unable to provide further details about the ongoing investigations as these remain live inquiries.

Item 6: Update: Community Fund



Update

September 2023

Justin Sargent
Somerset Community Foundation

Grants awarded		
Programme	Awarded*	No. of grants
Strategic grants	£1,542,823	11
Small grants	£706,530	180
Otterhampton	£363,180	16
Open Grants	£6,139,382	66
Community Development	£10,000	2
	£8,761,915	275

* For the period 2017 - 2026

Recent Examples



In Charley's Memory



Bridgwater Cricket Club



Contacts

Amelia Thompson, Senior
Programmes Manager

Peter Stolze, Programme Manager

amelia.thompson@somersetcf.org.uk

peter.stolze@somersetcf.org.uk

01749 344949

www.hpcfunds.co.uk

www.somersetcf.org.uk

Item 7: Main Site Forum 22 June 2023

Chair

Item 8: Transport Forum 13 July 2023

Chair

Item 9: Any other business

Chair

Item 10: Date of next meeting 18th January 2023

Chair

Thank You