

# Welcome

# Agenda:

## Main Site Forum – Thursday 19<sup>th</sup> October 2023

1. Welcome and introductions
2. Meeting note / matters arising from last Forum held: 22<sup>nd</sup> June 2023 - (Chair)
3. Project Progress Update - (Stacy Walker, EDF)
4. Southern Landscape Area Ecology Update - (Stacy Walker, EDF)
5. Any other business – (Chair)
6. Date of next meeting: Thursday 22<sup>nd</sup> February 2024 at 6pm

# Item 3: Project Progress Update

Stacy Walker

Stakeholder Relations Manager – Hinkley Point C

# Safety and Learning



- Environment Week held from 11<sup>th</sup> – 15<sup>th</sup> September
- Focus on waste, energy use and pollution prevention

# Project Progress – Virtual Tour - also available at <https://www.youtube.com/watch?v=qnNJsTiB16E>



**Hinkley Point C**

**site tour**





# Journey to Dome Lift



# The Path to Dome Lift

To achieve Dome Lift focus is on four key areas:

1. Completing the internal civil structures
2. Introducing key equipment
3. Preparing the Dome ready for lifting
4. Building and lifting in the Polar Crane

## Internal Civil Structures

- Crane has now been removed from the centre of Unit 1.
- Focus is on getting the **+19.5m level** slab finished which is a precursor to Dome Lift.
- In addition, work must be completed on the **Ring Walls** (located on the outer circumference of the internal structures).
- Rebar placement, formwork erection and several concrete pours occur each week to progress the structures which will 'hold' components of the Nuclear Steam Supply System in place.





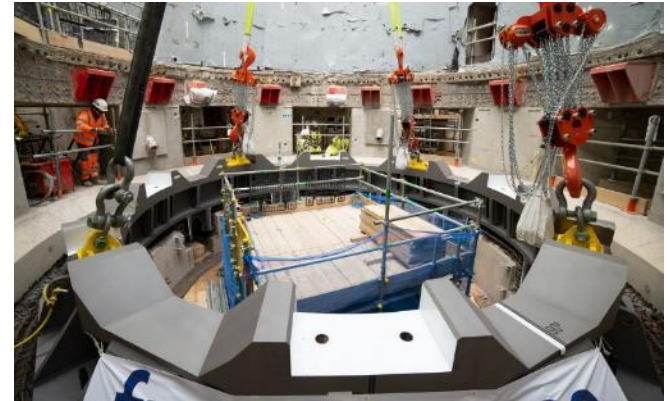
# The Path to Dome Lift

## Equipment introduction

- Several pieces of key equipment are required to be installed prior to Dome Lift
- In August, the Reactor Pressure Support Ring was lifted into the building as well as the third accumulator for the emergency cooling system.

The RPV Support Ring supports the Reactor's position in the Reactor Pit.

It's the first piece of permanent equipment manufactured by Framatome to be introduced into the reactor building.





# The Path to Dome Lift

## Assembling and preparing to lift the Polar Crane

- Work on the Polar Crane assembly is taking place in the large white building opposite the Simulator Building.
- The Crane will swivel around the Dome to manoeuvre heavy components during construction and then be used for maintenance and refuelling.



## Progress

- The crane is taking shape and Mechanical & Electrical fit out well underway.
- 4x bogies and 2x cross members assembled and Quadrilateral formed.
- In the past few weeks giant trolleys have been lifted into the enclosure. These will run up and down the crane's two large beams on rails.



# Turbine Hall





# Turbine Hall – Internal Crane



- The 300t crane trolley made the journey from Combwich earlier this month.
- The crane will live at the top of the Turbine Hall and will be used for installation and maintenance of the Turbine.
- The crane is being assembled by Fayat in Avonmouth, Bristol.



# Marine Works



- The first of six Isolation Caps have been delivered.
  - Each one consists of around 33 tonnes of high tech, first of type engineering.
  - The caps have two important functions during construction and commissioning:
    1. Preventing water from entering the tunnels while the team completes the work to connect the tunnels to the heads sitting on the seabed.
    2. Allowing water from the Bristol Channel into the system, leading to the filling of the tunnels and ultimately flooding the forebay.
- Therefore, this delivery takes us one step closer on our Mission to Commission Hinkley Point C.
- 12• Each Isolation Cap will be integrated into the giant steel Liners at Portbury, ready for placement into the sea bed in the coming months.





# Thank You



# Item 4: Southern Landscape Area Ecology Update

Stacy Walker

Stakeholder Relations Manager – Hinkley Point C

## Somerset Walking Festival

Somerset Walking Festival took place in September.

Hinkley Point C took part and organised a walk and talk of The Southern Landscape.



Somerset  
& Exmoor  
Coast  
Festival









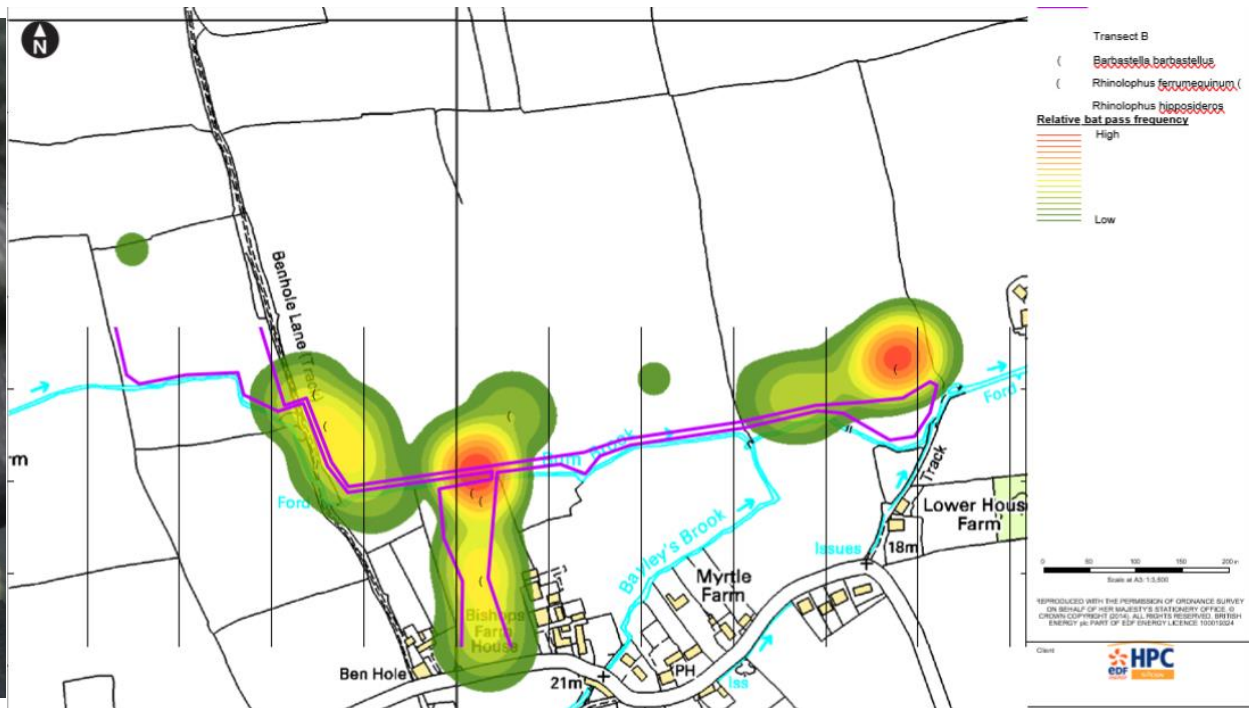














# Thank You

# Item 5: Any other business

Chair

# Item 6: Date of next meeting: 22<sup>nd</sup> February 2024

## 2023 dates for the Community, Main Site and Transport Forums

All 6pm start and on Thursdays

<b>Main Site Forum</b>	23 <sup>rd</sup> February 2023	22 <sup>nd</sup> June 2023	<b>19<sup>th</sup> October 2023</b>
Community Forum	19 <sup>th</sup> January 2023	18 <sup>th</sup> May 2023	21 <sup>st</sup> September 2023
Transport Forum	16 <sup>th</sup> March 2023	13 <sup>th</sup> July 2023	<b>16<sup>th</sup> November 2023</b>

[www.edfenergy.com/hpccommunity](http://www.edfenergy.com/hpccommunity)



# Thank You