

Welcome

Agenda – Community Forum – 22nd September 2022

1. Welcome and introductions - (Chair)
2. Meeting note / matters arising from last Forum held on: 19th May 2022- (Chair)
3. Project Progress Update - (Andrew Cockcroft, Anne Lawrence, EDF)
4. (4a) Current and Ongoing Consultations (4b) Future Proposals (Andrew Cockcroft, Andrew Goodchild, EDF)
5. Update: Office of Nuclear Regulation Report (Alun Griffiths, ONR)
6. Update: Community Fund - (Justin Sargent, Somerset Community Foundation)
7. Main Site Forum Update - (Chair)
8. Transport Forum Update- (Chair)
9. Any other business - (Chair)
10. Date of next meeting (19th January 2022) and dates for all 2023 meetings

Item 3: Project Progress Update

Andrew Cockcroft

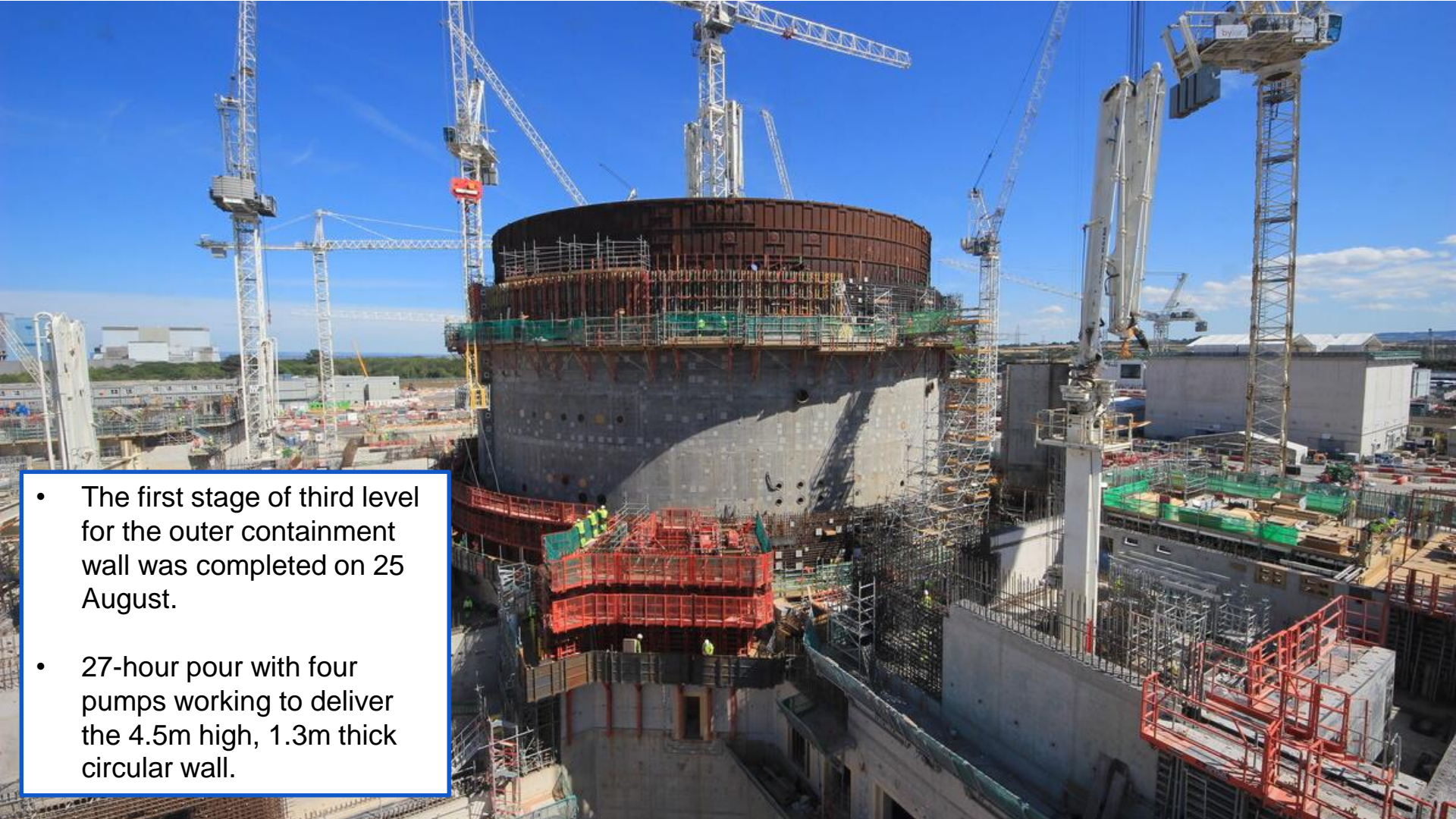
Senior Manager – Community Relations

Anne Lawrence

Head of Site Nuclear Compliance

Safety Performance – Learning from Events



- 
- The first stage of third level for the outer containment wall was completed on 25 August.
 - 27-hour pour with four pumps working to deliver the 4.5m high, 1.3m thick circular wall.

Unit 1 - Internal Structures

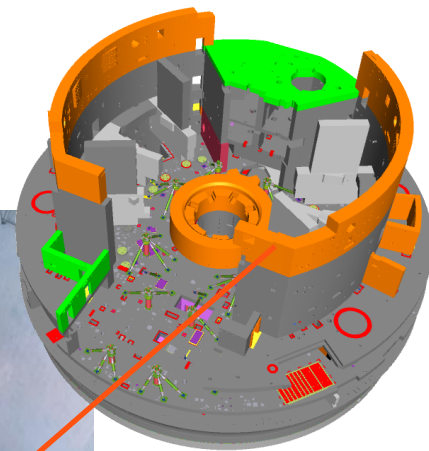


Dec 2021 (for context)



August 2022

- Over the rest of 2022 the **internal structures will grow towards the +19.5m level** with the completion of the ring wall.
- The radial walls, clearly visible in December last year are now almost invisible.
- **Focus on many smaller pours** forming the various rooms and walls within the reactor building.



Unit 1– Liner Ring 3

- **Liner Ring 3** was lifted out of **Bunker 6** on 12 August
- This is the **last Liner Ring before Dome Lift** and has the Polar Crane Brackets fitted to it.
- **45 Polar Crane Brackets** have been welded onto the Liner.



Polar Crane Brackets

AIL Deliveries

- **Abnormal Indivisible Loads (AILs)** have been moving along the **C182** from Combwich
- **Plan to pause deliveries and movements until the end of the year** whilst final improvement work is carried out at Combwich Wharf.
- **Notification system working well** – please let us know if anyone feels they are not being informed.



Polar crane beam



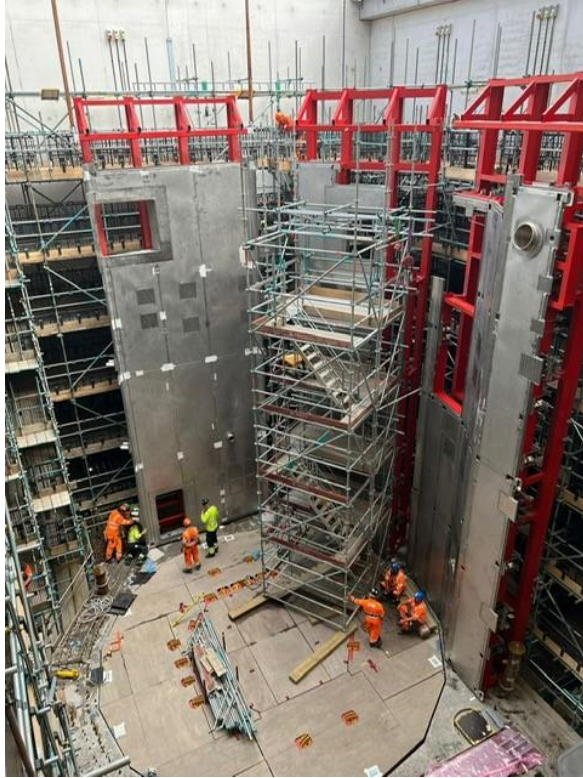
Unit 2 Main Emergency Diesel Generator Fuel Tanks and Transformer

Unit 1 Turbine Hall



- **800 tonnes of Falsework supported the 2,500m³ concrete Turbine Table** during its construction.
- The Falsework is now being removed in stages and moved to Unit 2

Unit 1- Reactor Cavity Panels



- Another huge **reactor cavity panel** has been lifted into the **East Pool Bunker** and installed onto the cavity base.
- **More panels will be lifted**, stitched together and welded to form the final pool.
- The **complete pool** will then be lifted into the reactor building later this year.

Progress – In other news...



- **Unit 1 Volute completed.** They are essential to the operation of the pumps that feed water to the condensors and are the most complex concrete structures on site.
- Successful **completion of hydrotests for the first 'Cold Leg' of Unit 2**, two months ahead of plan.
- **The final Containment Heat Removal pipe spool has now been welded into position** on the underside of Unit 1's Dome.

*Floating cranes lower
5,000 tonnes down
to seabed*



<https://www.youtube.com/watch?v=OQR3Rjo51WU>

Community Safety

Weekly safety messages

**Community Safety and Policing**
25th – 31st July 2022

**HinkleyPoint C**
Helping Britain Achieve Net Zero
EDF GPCON

It is estimated that **Hinkley Point C** will employ 8,600 workers at peak construction. We have a target for 36% of our workforce to come from the local population. In addition to creating significant employment opportunities for people living in Somerset, the project will also require the skills of non-local workers. It is crucial to plan, monitor and manage any impacts of our transient workforce on local infrastructure, services and community safety.

The **Hinkley Community Safety Group (HCSG)** is a collaborative working group with emergency services providers, Somerset County Council and local authorities. The HCSG manage **community safety issues** relating to Hinkley Point C. It considers the potential impacts across the local geography, sets a strategy for mitigating any negative impacts on the community through monitoring and management and makes use of the most appropriate resources.

At Hinkley Point C we acknowledge importance of collaborative working with the emergency services and local authorities in **protecting and supporting our community.**

Did you know?

"Our business only exists with the support and trust of our community, we should never take this for granted."

The Hinkley Police Team have their own page on **Teamhinkley.com** scan the code to visit





Consider the impact and consequences of your actions. Ask your colleague are they ok?

NOT PROTECTIVELY MARKED **ZERO HARM**

Director level support

"Our business only exists with the support and trust of our community, we should never take this for granted..."

Stuart Crooks
Managing Director

Community Matters



On screen animations

**HinkleyPoint C**
Helping Britain Achieve Net Zero
EDF GPCON

Please ensure that your vehicle is registered and **park in the correct way at all times**



Signposting

Your Hinkley Point C Neighbourhood Police Team

HPC Site Police Office (not 24hrs) – HAS – (Ground Floor)

 Police Sergeant 559 Neil Klemms 01278 645053	 Police Constable 3674 Esther Lawson 07889 659374	 Community Support Officer 7599 Jake Dade 07889 659268	 Police Constable 750 Nikki Coleman 07889 654829	 Police Constable 4238 Chris Hinchliffe 07889 657336
---	---	--	--	--

AVON AND SOMERSET
CONSTABULARY

101

IN AN EMERGENCY ALWAYS CALL 999

www.avonandsomerset.police.uk

contact us direct

01278 645193

Email - hinkleypoint@avonandsomerset.police.uk

<https://www.avonandsomerset.police.uk/your-area/hinkley/>

HinkleyPoint C
Helping Britain Achieve Net Zero
EDF GPCON

SCR 01278 486223

SCR EMG 01278 483333

Avon and Somerset Police
SERVE. PROTECT. RESPECT.

www.avonandsomerset.police.uk | Follow us on   

CRIMESTOPPERS
0800 555 111

Call emergency with information about crime

RESPECT



Put yourself in their shoes



~~HARASSMENT~~

~~THREATENING BEHAVIOUR~~

~~RACISM~~

~~BULLYING~~

~~DISCRIMINATION~~

~~SEXIST COMMENTS~~



It's the **HPC Way**



Item 4a: Current and Ongoing Consultations

Andrew Cockcroft

Senior Manager – Community Relations

Andrew Goodchild

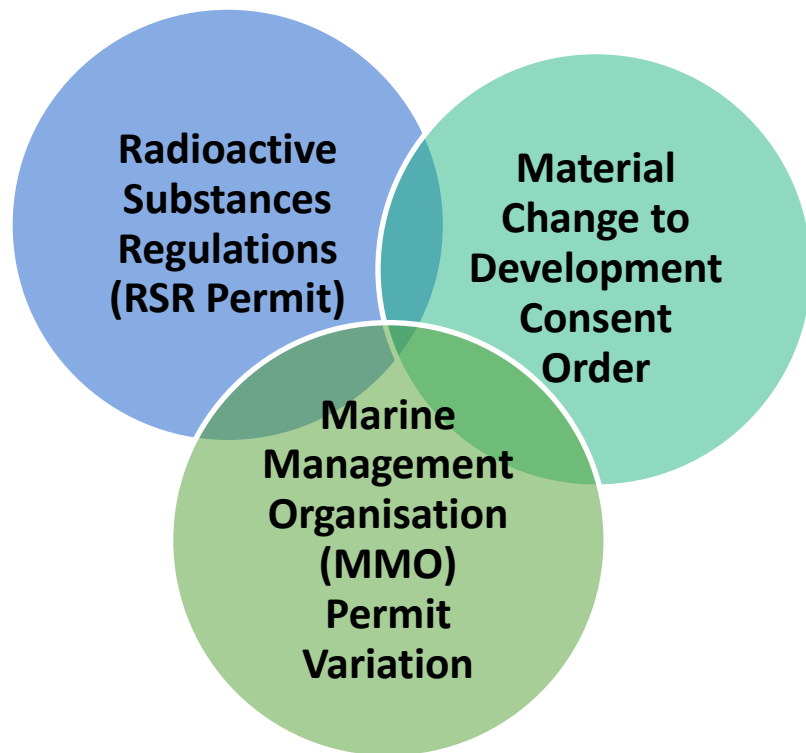
Planning Manager

Acoustic Fish Deterrent



- Following an appeal, the **Secretary of State for the Environment, Food and Rural Affairs ruled against Hinkley Point C's application not to install one of three fish protection measures** originally proposed for the power station.
- The acoustic fish deterrent is meant to deter fish that can detect sound from entering the cooling water intakes.
- ***The project will now look at the decision in detail and will consider its response.***
- Many power stations have taken cooling water from the Bristol Channel and Hinkley Point C will be the first to include any fish protection measures at all.
- The two protection measures include a fish recovery and return system and special water intakes. These are designed to slow down the water entering the cooling system so that fish can swim away. They are also placed in a way that means the tide carries fish over and around the intake heads themselves. It's a big improvement from older power stations that we have seen around our coastlines.

Planning and Permits - Update



1. The **Environment Agency** has conducted its consultation on **variations to HPCs RSR permit**. A decision is expected soon.
2. As a result of the decision on the acoustic fish deterrent, we will be **delaying our planned consultation for a material change of the Development Consent Order**. We will keep all forum members and the public informed.
3. We have submitted an application to the **MMO for minor variations to the permit for the next phase of marine works** – the drilling of the vertical shafts down to the tunnels. It includes;
 - **Minor variation to programme** end dates to allow for unexpected delays (*start dates remain the same);
 - **Increased volume of grout** used within the six vertical shafts;
 - **Removal of the use of a de-airing pump** and facility;
 - **Small increase in volume of arisings** expected from drilling; and,
 - **Increased range of the size of backfill** used to protect the heads from scouring (now including 500mm material)



ENVIRONMENT
AGENCY



Planning
Inspectorate



Marine
Management
Organisation

Item 4b: Future Proposals

Andrew Cockcroft

Senior Manager – Community Relations

Andrew Goodchild

Planning Manager

Cycle Path Consultation

- A developing proposal for a **shared use cycle path** running from Combwich to Hinkley Point.
- It would provide a **sustainable commuting route** to Hinkley Point A, B and C power stations whilst also providing wider local value – offering an enjoyable route for leisure purposes.
- The new route would be **entirely funded by the Hinkley Point C project** and, for the majority of the route, would look to **resurface existing paths**.
- **Builds on existing cycle infrastructure** in the area and also connects to an existing path.

Consultation Events

- **27th September 2022**, Otterhampton Village Hall, 1pm - 8pm.
- **6th October 2022**, Stogursey Victory Hall, 3pm - 7pm.
- **A workshop** will also take place as part of the main site forum on **20th October**



Cycle Path Consultation

- The consultation seeks views on:
 - Routing (alignment with BCO route or not)
 - The width of the route
 - Types and Options for surfacing
 - Needs of users inc. Commoners / Landowners / Bodies inc. the EA
 - Nature of access required / vehicles that are used
 - The location of cattle grids / other essential infrastructure
 - The approach to signage
 - Details of the connections at either end to existing routes

Proposal for the use of Pontins

- The proposal under discussion is part of a range of options considered as Hinkley Point C's workforce expands.
- **Initial discussions** with Britannia (site owners) have begun and we are in discussions with Sedgemoor on planning permission.
- The site would allow space for around **900 people** – **helping to increase local accommodation capacity and provide a balanced offering.**
- **The use would be temporary during peak construction only.** This would be around 3 years.
- There is no final decision on the proposal as commercial and planning discussions continue.



Why Pontins?

- **A huge amount of work and research has gone into locating and assessing options** both closer to and further away from the HPC site. They have even included the use of off-shore facilities.
- The **Pontins site is the closest viable location** available.
- Our existing campus sites cannot be expanded;
 - They were designed with a set capacity and not built to accommodate additional floors
 - Are tightly constrained in terms of the land availability and;
 - the timeframe to construct new accommodation blocks would not fit with the period of peak construction.



Part of HPCs on-site accommodation campus. Unfortunately, it cannot be expanded further.

How would this work in practice?

- If taken forward, we would use the site **temporarily** throughout the peak construction period for **around 3 years**.
- Our current accommodation management company **HOST**, would **run the site** in the same way as our current campuses.
- **We will continue to employ all the current staff** and all year round and maintain all the facilities – making sure that community use is maintained.
- **Traffic volumes would be minimal** as residents would not use their cars to drive to site. Direct buses would operate outside of peak hours to HPC and there would be around 20 – two-way movements per day.



HOST

Multi-million pound upgrades

- We are committed to providing high quality accommodation for our workforce.
- We will be making a multi-million pound investment into the facilities – leaving a lasting legacy to improve the tourist offering.
- We would propose to;
 - Renovate and modernise the chalets themselves.
 - Upgrade the old and poor standard of electrical supply.
 - Install site wide wi-fi connections.
 - Upgrade the wider infrastructure of the site.



Thank You

Pre-submitted Questions

- *What is the progress against plan? Are you on schedule?*
- *What difference will the building of another station at Sizewell make?*
 - Submitted by Geoff Richardson, North Somerset Councillor for Clevedon West
- *Regarding the Acoustic Fish Deterrent and the lack of fish protection measures at HPA, HPB and the other Bristol Channel power stations, isn't that more an indictment of previous practice? Surely several wrongs don't justify not getting it right with the HPC AFD?*
- *Why has it taken until September 2022 – seven years into HPC – to see a slide about RESPECT for the workforce?*
 - Submitted by Roy Pumfrey, Stop Hinkley



Office for
Nuclear Regulation

ONR Community Forum Report Highlights

Alun Griffiths

September 2022 Update

Item 5: Office of Nuclear Regulation Report

ONR Report Q1/2 2022

In this period, routine inspections (including an un-announced inspection) of the HPC site covered the following:

- plant construction and/or commissioning;
- emergency preparedness;
- quality assurance and records;
- organisational capability;
- conventional (non-nuclear) health and safety;
- security

Permissioning

- ONR issued a Licence Instrument at the end of May for NNB GenCo to deliver the first nuclear steam supply system (NSSS) component, a reactor coolant pump casing, onto the HPC site. This also considered arrangements that will be relevant for other significant NSSS components, for example delivery of the reactor pressure vessel.
- ONR's next major permissioning point, using primary powers, will be the start of inactive commissioning. However, in advance of that ONR will apply flexible permissioning to allow the start of a number of other activities.

Non-routine Matters

- Improvement Notices were served after a worker fell from scaffolding. The notices were served on contractors Bouygues Travaux Publics SAS and Laing O'Rourke Construction Limited, the joint venture partners in BYLOR JV. This was a conventional health and safety incident and not a nuclear related safety incident. The contractors have complied with the Improvement Notices by the deadline set by ONR.
- ONR was made aware of a fire at HPC, involving the scaffolding boards on the outside of the unit 1 reactor building. Increased oversight of fire management is being carried out as well as consideration if other enforcement action is appropriate.
- A decision has been made to formally investigate the event at site that resulted in a worker sustaining injuries as a result of a rebar mesh wall falling.

Item 6: Update Community Fund



Update

September 2022

Justin Sargent
Somerset Community Foundation

Grants awarded		
Programme	Awarded*	No. of grants
Strategic grants	£1,542,823	11
Small grants	£483,381	131
Otterhampton	£345,692	15
Open Grants	£3,453,893	45
Community Development	£10,000	2
	£5,835,789	204

* For the period 2017 - 2025

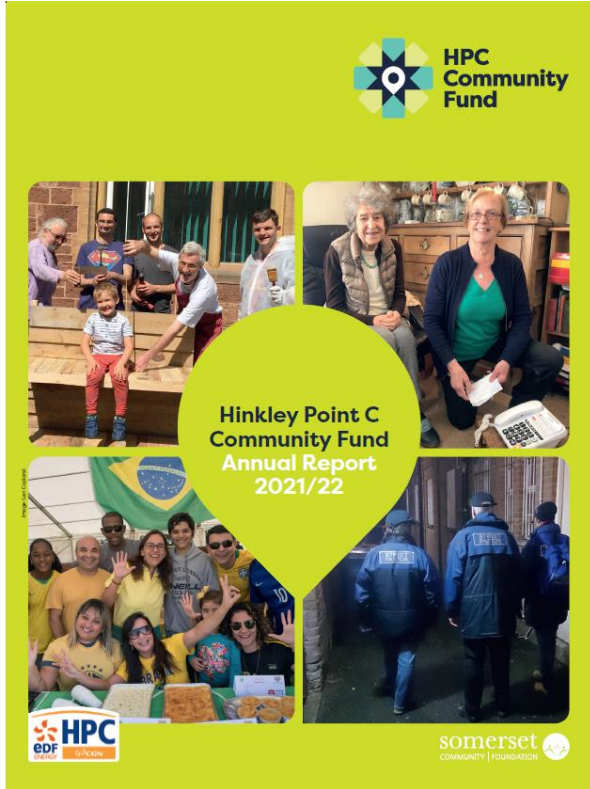
Recent Examples

Social Circles CIC



Bridgwater Sea Cadets





2021/22 HPC Community Fund Annual Report



Contacts

Val Bishop, Programmes Director

Peter Stolze, Programme Manager

val.bishop@somersetcf.org.uk

peter.stolze@somersetcf.org.uk

01749 344949

www.hpcfunds.co.uk

www.somersetcf.org.uk

Item 7: Main Site Forum 23rd June 2022

Chair

Item 8: Transport Forum 14th July 2022

Chair

Item 9: Any other business

Chair

Item 10: Date of next meeting

Thursday 19th January 2023 at 6pm

2023 dates for the Community, Main Site and Transport Forums

All 6pm start and on Thursdays

Community Forum	19 th January 2023	18 th May 2023	21 st September 2023
Main Site Forum	23 rd February 2023	22 nd June 2023	19 th October 2023
Transport Forum	16 th March 2023	13 th July 2023	16 th November 2023

www.edfenergy.com/hpccommunity

Thank You