

Welcome

Agenda: Main Site Forum - Thursday 24th February 2022

1. Welcome and introductions
2. Meeting note / matters arising from last Forum held: 21st October 2021 - (Chair)
3. Project Progress Update - (Andrew Cockcroft, Jonathan Legg, EDF)
4. Update: Social Mobility – (Vicky Dingwall, Andrew Cockcroft, EDF)
5. Forthcoming Material Change Application (John Pingstone, EDF)
6. Any other business - (Chair)
7. Date of next meeting: Thursday 23rd June 2022 at 6pm

Item 3: Project Progress Update

Andrew Cockcroft

Senior Manager – Community Relations

Jonathan Legg

HPC Planning Team

Covid-19 – Developing Our Response

- Vaccination uptake as whole is high and we continue to encourage everyone to get their booster vaccinations.
- HPC is now the first construction Site in the UK to be able to deliver our own vaccination clinics. Our nurses have undergone specific training to prepare them. We thank Public Health England and the NHS.
- We continue to operate as a Covid Managed Project – accessing site by providing vaccination status or negative test result.



Progress Update



- Big Carl has now placed the **first huge steel ring section into unit 2**. It occurred 11 months after the same operation on the first reactor.
- The **ring was built 25% more quickly than the same part on unit one**, requiring thousands of hours less labour to manufacture.
- **Acceleration into MEH Phase** – 2022 will see work begin on 500+ rooms.
- **Further progress taking place off site** with suppliers across the UK and abroad. For example – the manufacture of the polar crane in Spain and the frames to support the intake heads in Scotland. Closer to home, elements of the electrical systems are being manufactured in Bridgwater.



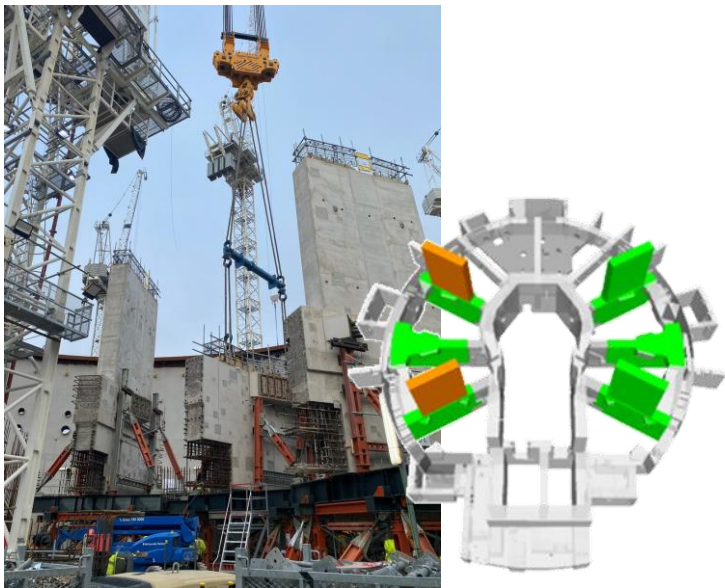
- A major concrete pour was completed on 9th February, taking 34 hours.
- The pour is the fourth of 11 which will form the reactor's 'Inner Containment'. The Inner Containment is the circular concrete structure which sits on the outside of the leak-tight steel liner.
- In total, 840m3 of concrete was placed – which is enough to fill around nine double-decker buses.
- Completing this task is a precursor to lifting Liner Ring 2 into place in the coming weeks.



Progress Update

Radial walls installed

- The first of six heavy radial walls have been installed into Unit 1. The 207 tonne structure was manufactured in HPC's pre-cast yard before being lifted into position.
- The walls will segregate the steam generators and reactor coolant pumps within the Reactor Building.



Turbine rotor delivered

- The first low pressure rotor, which will form part of the World's largest turbine, has been safely delivered to Avonmouth.
- The 13m x 5m rotor arrived from GE's Belfort facility in France, via Rotterdam.
- There are three LP rotors per turbine which are key components of the power production equipment in the Turbine Hall (HM). The delivery was 12 months in the planning by a core project team of Osprey, EDF and GE



Progress Update - MEH



Left, Right and Above: Handover of electrical building to the MEH Alliance and the start of the manufacture of back-up MEH instrument and control cabinets.

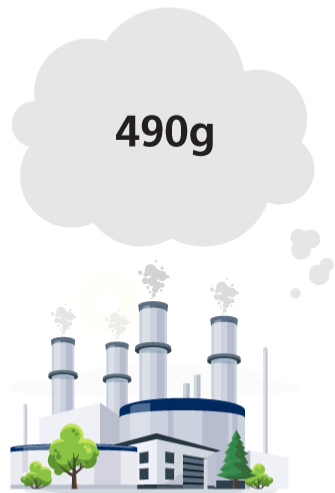


The Office for Nuclear Regulation (ONR) has granted permission for the start of bulk MEH component installation work at HPC, a major milestone for HPC.

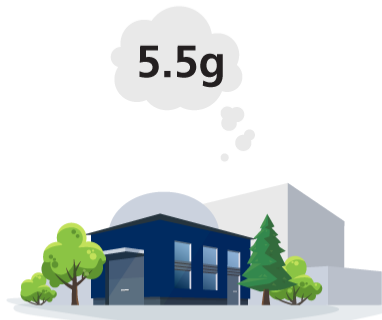
Hinkley Point C will have lower lifecycle carbon emissions than wind and solar. All three technologies will be essential in helping Britain achieve net zero.

Visit
edfenergy.com/hpc
for more info

Carbon produced by different energy sources per kilowatt-hour of electricity generated, CO₂ eq



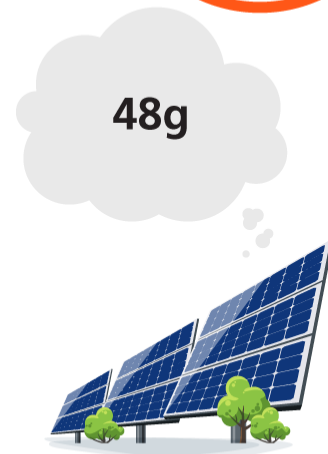
Gas



**Hinkley Point C nuclear
power station**



**Offshore
wind**



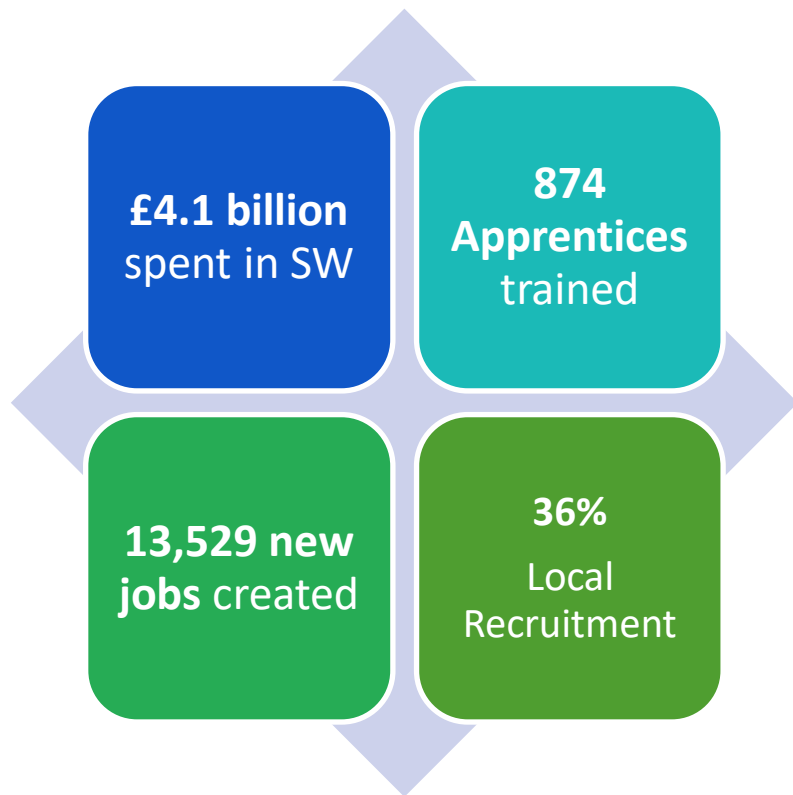
Solar

The carbon avoided by generating electricity from Hinkley Point C rather than from a gas-fuelled power station means that it will 'offset' its construction emissions within a few months of operation.

Source: Hinkley Point C emissions based on 2021 LCA estimate. Gas, offshore wind and solar emissions based on 2014 IPCC median estimates.

Delivering Socio – Economic Benefit

- The project continues to **meet and exceed** its targets for social and economic benefit for the local area.
- **New jobs available and new training facilities** will mean that local people can benefit, no matter their skill level or current position.



Above: The first candidates from the HSO bronze programme have completed their training. **£8 million has now been invested into Centres of Excellence.**

The year ahead.....

- Around 217,000m³ of structural concrete will be poured – averaging 80 pours per week. **That is over double the number poured each week in 2021.**
- **The MEH alliance will begin work on c.500 rooms** – ramping up their workforce in the process.
- **We'll pass 50% of all our equipment deliveries to Site** – that's more than 1,000 in 2022.
- **Key areas of activity;**
 - Continued ramp up of civils and MEH.
 - Work will begin on the main control room.
 - The simulator building will be transferred to the pre-operations team.
 - Progress on marine works, including installation of intake heads.



Associated Developments – Combwich Wharf



- Major construction works are complete with most recent work including;
 - Removal of the Trellex fenders on Dolphin F.
 - Replacement of 9 of the 11 Emergency Access Ladders.
- As we move towards operations in the Spring, final elements of construction will include;
 - Install finished wearing course at the Wharf entrance
 - Erect permanent timber acoustic fencing by the Wharf entrance
 - Complete new fender installations
 - Complete the AIL bypass track Q2 22
- Dredging will be a regular ongoing activity once we commence marine operations and will run approx every 6 weeks.
- Development of notification system to provide advanced warning of AIL movements.

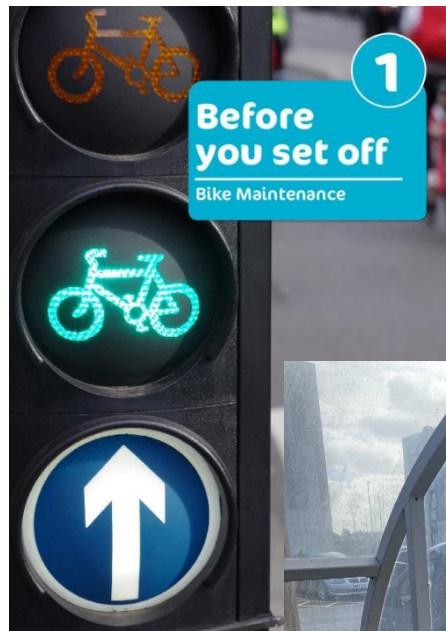
Associated Developments

Cycle Safety

Actions are being taken to improve signage and educate the workforce on site to avoid dangerous cycling in pedestrianised areas.

Bridlepath Widening

Over the next month, TCI will be making improvements to the bridlepath by the Hinkley campus. This will make it wider and more suitable underfoot / wheel.

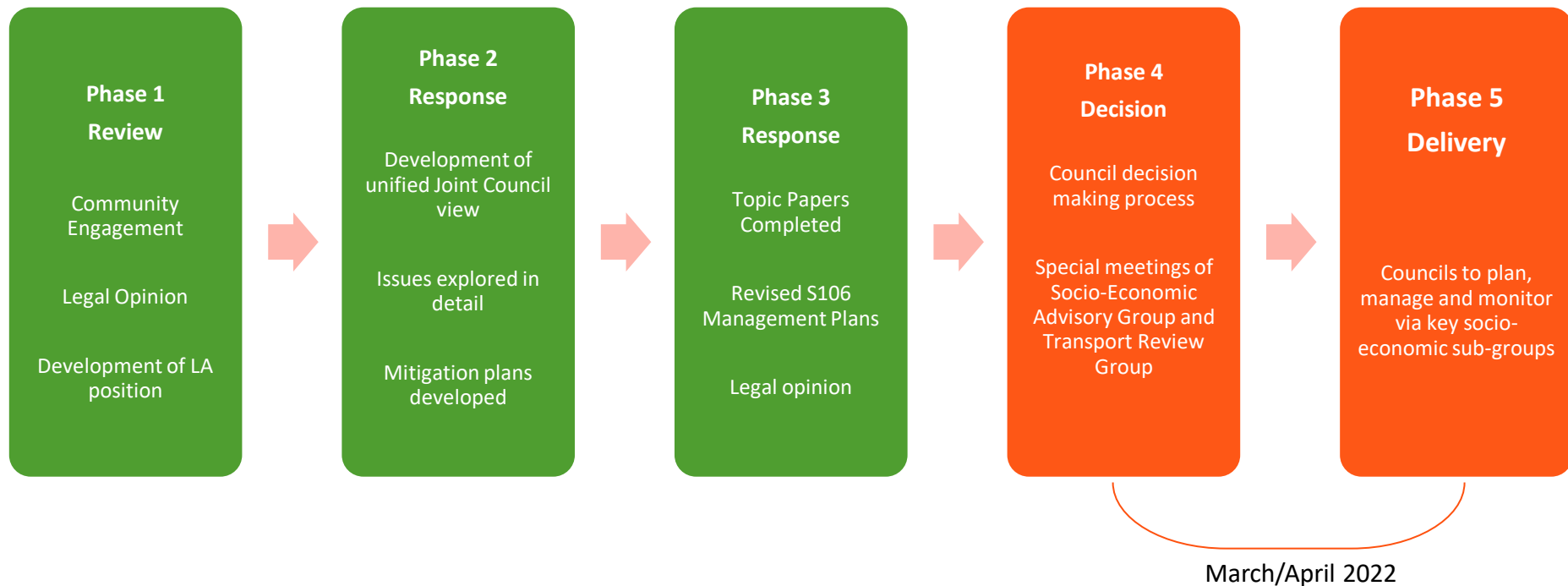


Dredging and Disposal Activities



- Hinkley Point C resumed mud dredging as part of works to install cooling water intakes in the Bristol Channel.
- The mud was found to be no different from mud elsewhere in the channel and comprehensive testing has shown that it poses no harm to people or the environment.
- **Our contractors have now completed the main dredging and disposal** of mud at the licensed disposal site at Portishead.
- **Some further maintenance dredging will be required in Spring** ahead of the placement of the heads for the cooling water system.
- A legal challenge has been lodged against the Marine Management Organisation (MMO) to challenge their decision. A hearing is currently expected to take place in the March.

Workforce Uplift

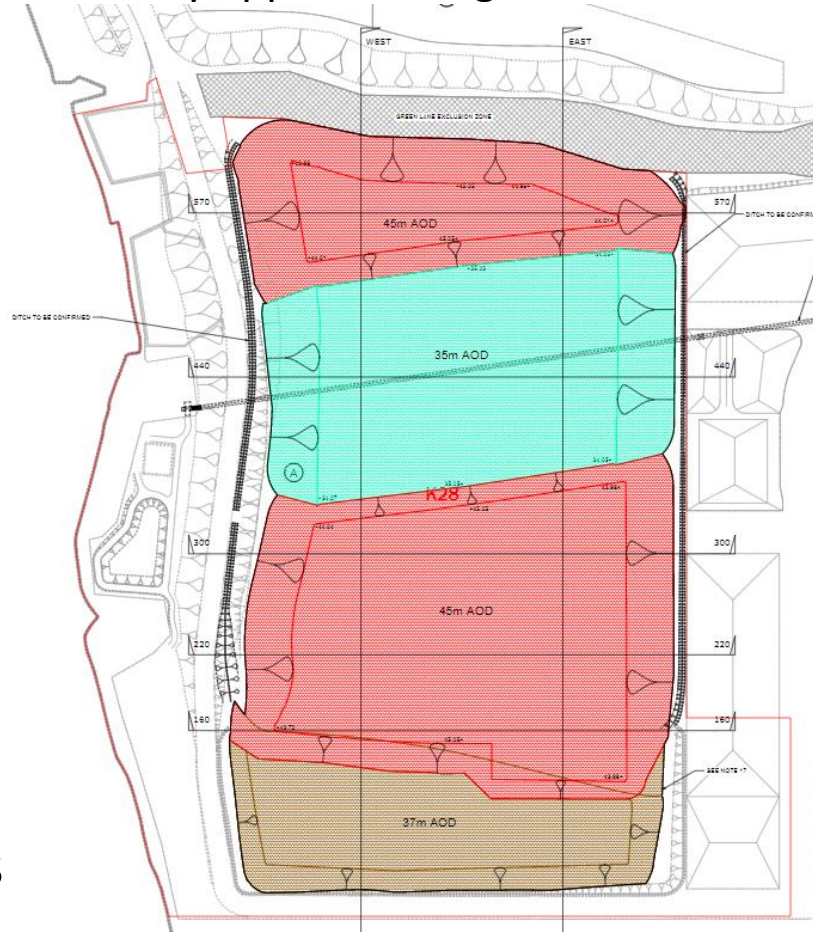


Progress Update - Stockpile

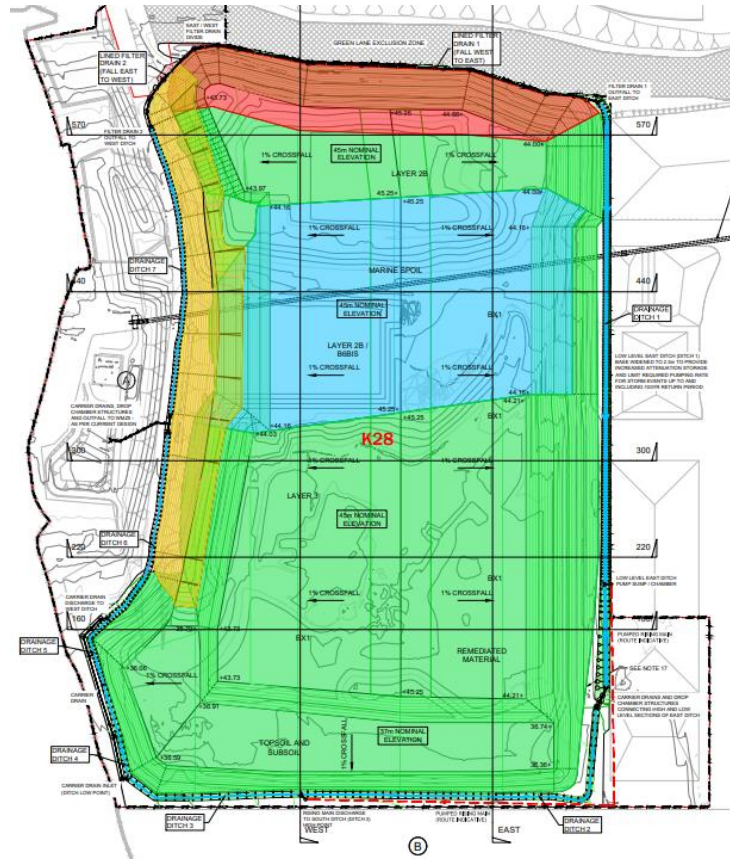


Progress update - stockpile

Previously approved height

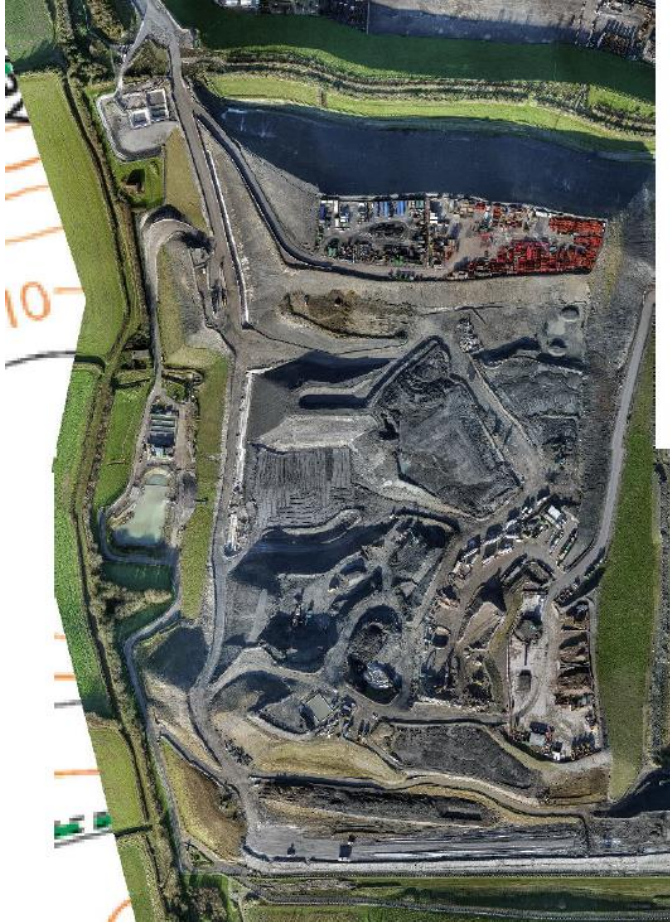


Current proposed height increase above Holford Culvert

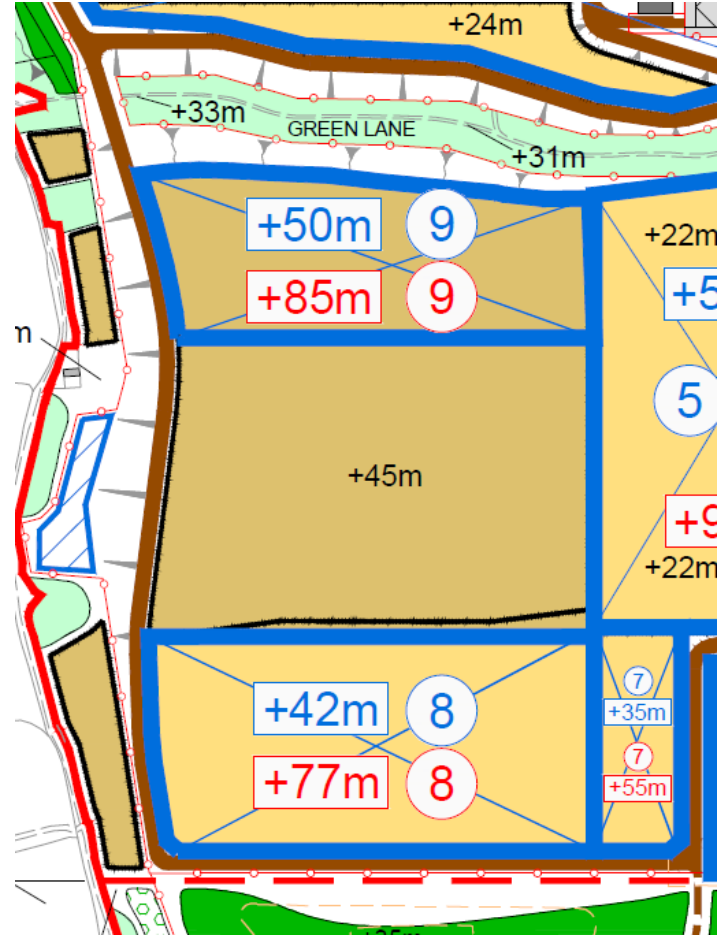


Progress Update - Stockpile

Recent aerial photo



Current proposal for storage of equipment



Item 4: Supporting Social Mobility

Andrew Cockcroft

Senior Manager – Community Relations

Vicki Dingwall

Community Relations Manager

The Context

"Social mobility is about an individual's ability to build a good life for themselves, regardless of their background. The more social mobility there is, the less someone's destination in life depends on where they start out..."

The Social Mobility Index was first published in 2016, and updated and compares the chances that a child from a disadvantaged background will do well at school and get a good job across each of the 324 local authority district areas of England.

Key findings for Somerset

- West Somerset is the worst performing area for social mobility in the whole of England
- In particular, West Somerset ranks lowest against adulthood social mobility indicators and against Early Years indicators

Hinkley Point C is able to make a tangible difference.....

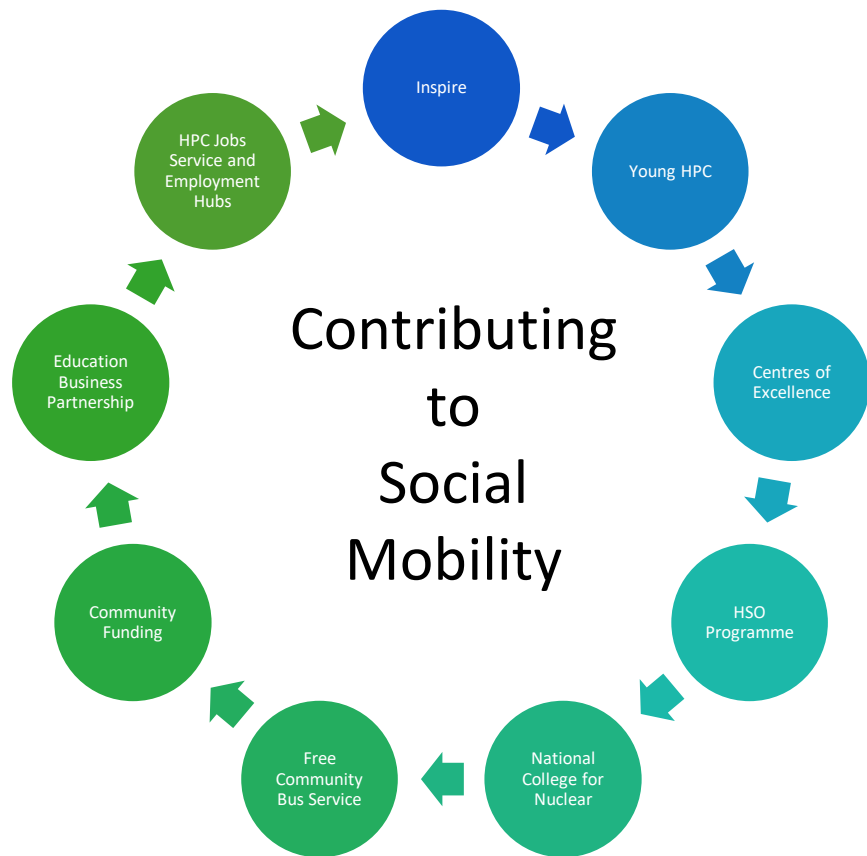


'It feels a little forgotten': West Somerset bears brunt of social mobility challenge

Picturesque views disguise the lack of opportunities in coastal towns like Minehead, where many teenagers feel stuck without prospects for change



Emily Hunter and Mason Hawker, both 19, are volunteer workers at the Minehead Eye youth centre and skate park. Photograph: SWNS/the Guardian



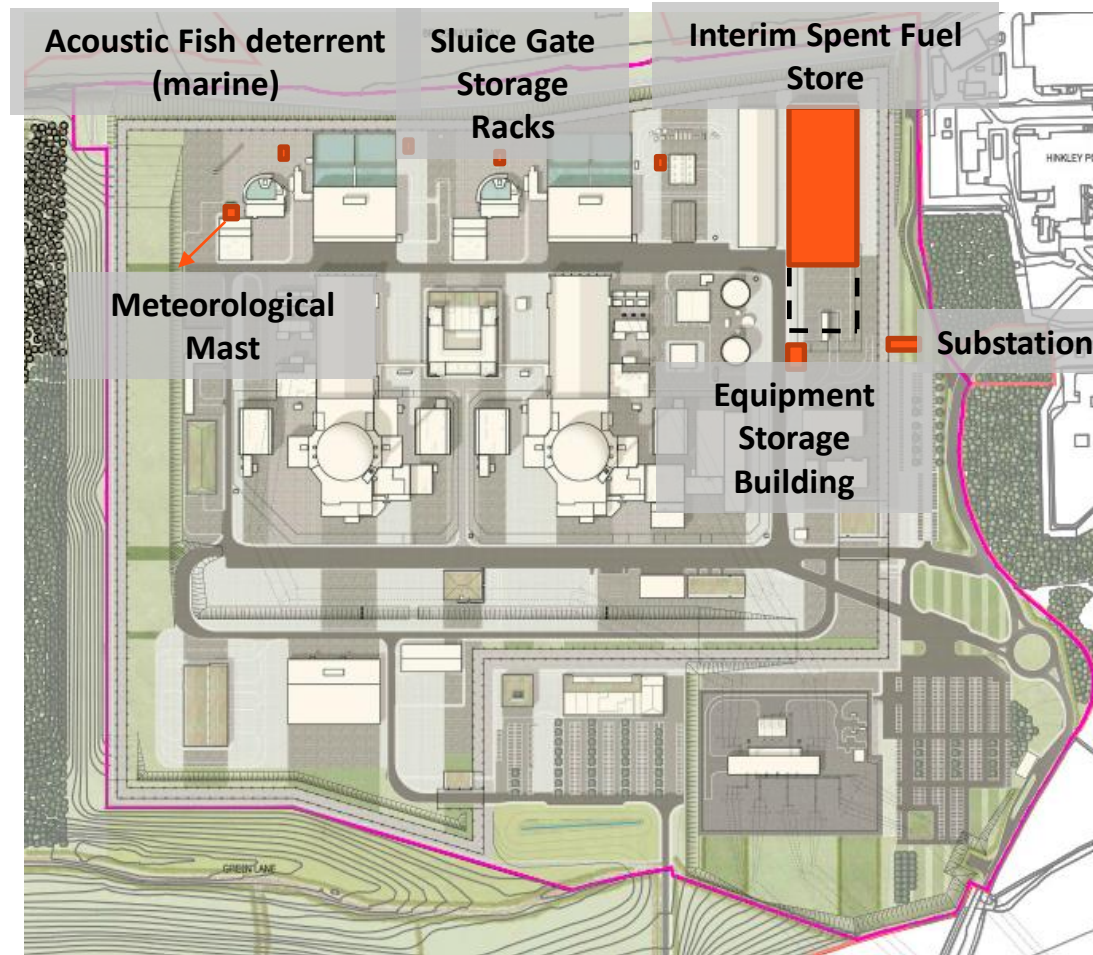
Examples of success...



Item 5: Forthcoming Material Change Application

John Pingstone

HPC Planning Lead



How to get involved – Public consultation

- As a material change, a full public consultation will take place with the public and all statutory consultees in advance of the application submission.
- We expect the **consultation to begin in May 2022**
- We will publish a suite of documents explaining the application and it's likely effects on the environment and local area.
- We will hold public exhibitions and explain the application at our forums.
- We welcome your views on our proposals.
- We will take into account your views. We have a duty to set out our responses in a report that is submitted with the application.



Thank You

Item 6: Any other business

Chair

Item 7: Date of next meeting

Main Site Forum: Thursday 23rd June 2022 at 6pm

2022 dates for the Community, Main Site and Transport Forums

All 6pm start and on Thursdays – format and venues to be confirmed.

Community Forum	20th January 2022	19th May 2022	22nd September 2022
Main Site Forum	24th February 2022	23rd June 2022	20th October 2022
Transport Forum	17th March 2022	14th July 2022	17th November 2022

www.edfenergy.com/hpccommunity

Thank You