

## LOCAL NOTICE TO MARINERS NO. 27 OF 2021

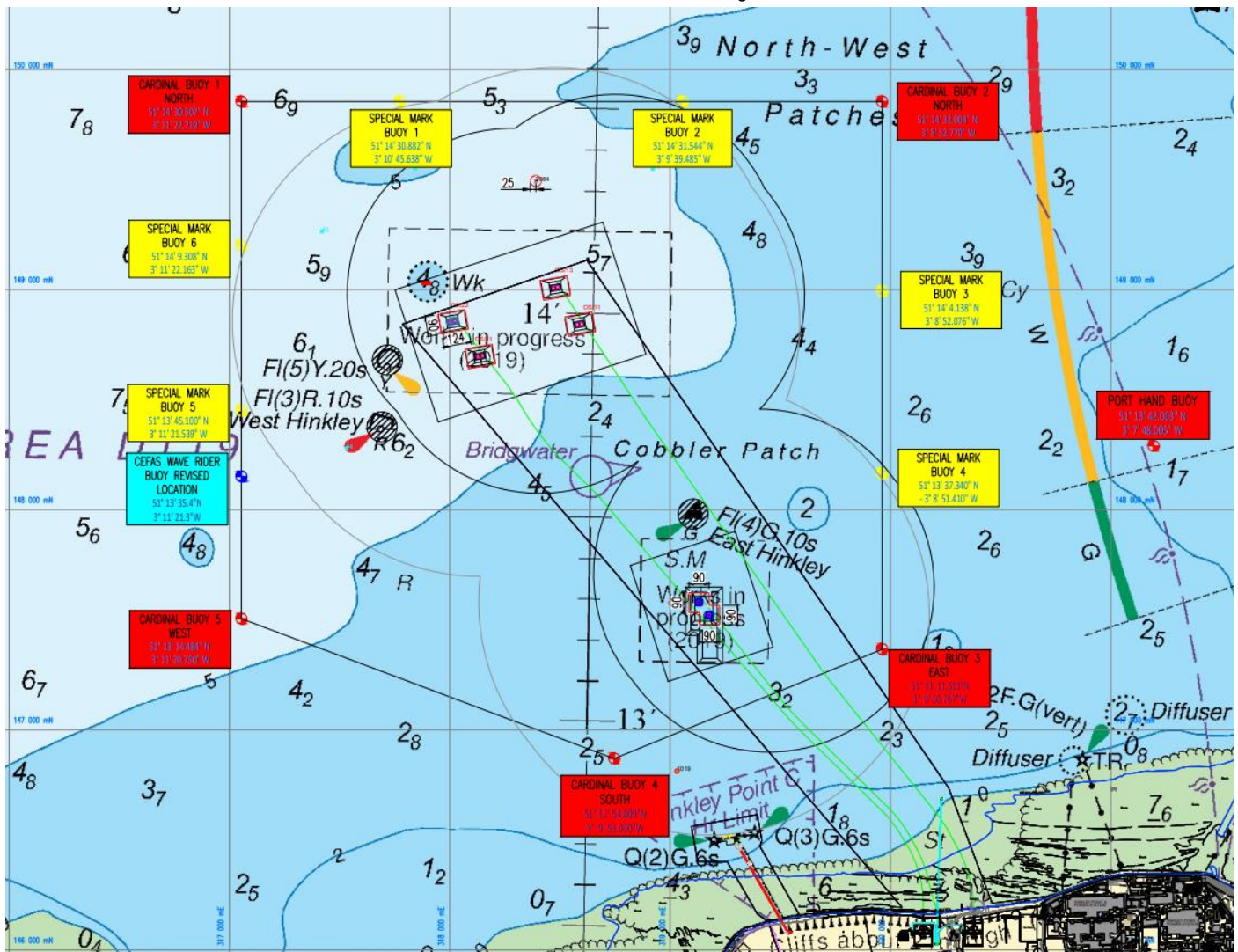
# Hinkley Point C Marine Works Aids to Navigation

Issue date: 19/11/2021

Mariners are advised that the Hinkley Point C Marine Works Principal Contractor's Cardinal Buoy 4 is now in position and working. This Local Notice to Mariners (LNTM) supersedes LNTM 26 of 2021 and is confirmation that all the Hinkley Point C Marine Works Principal Contractor's Aids to Navigation (AtoN) are all on station.

Please also note the installation of the CEFAS Wide Rider Buoy (highlighted blue in the diagram below).

Plan of Marine Works Aids to Navigation



Owners, Agents, Charterers, Marinas, Yacht Clubs and Recreational Sailing Organisations should ensure that the contents of this Notice are made known to the masters or persons in charge of their vessels or craft.

Hinkley Point C Harbour Authority  
LOCAL NOTICE TO MARINERS

Marine Works Aids to Navigation Information Table

Buoy Ref	Designation	Range	Characteristics	Position (WGS84)	IALA Cat.
Cardinal 1	North	3-5nm	Quick flash (white) - continuous	51° 14' 30.507N 003° 11' 22.710W	3
Cardinal 2	North	3-5nm	Quick flash (white) - continuous	51° 14' 32.004N 003° 08' 52.770W	3
Cardinal 3	East	3-5nm	Flashes 3 times (white) every 10 seconds	51° 13' 11.513N 003° 08' 50.767W	3
Cardinal 4	South	3-5nm	Flashes 6 quick flashes + 1 long flash (white)	51° 12' 54.809N 003° 09' 53.030W	3
Cardinal 5	West	3-5nm	Flashes 9 times (white) every 15 seconds	51° 13' 14.484N 003° 11' 20.750W	3
Special 1	Special Mark	3nm	1 flash (yellow) every 5 seconds	51° 14' 30.882N 003° 10' 45.638W	3
Special 2	Special Mark	3nm	1 flash (yellow) every 5 seconds	51° 14' 31.544N 003° 09' 39.485W	3
Special 3	Special Mark	3nm	1 flash (yellow) every 5 seconds	51° 14' 04.138N 003° 08' 52.076W	3
Special 4	Special Mark	3nm	1 flash (yellow) every 5 seconds	51° 13' 37.340N 003° 08' 51.410W	3
Special 5	Special Mark	3nm	1 flash (yellow) every 5 seconds	51° 13' 45.100N 003° 11' 21.539W	3
Special 6	Special Mark	3nm	1 flash (yellow) every 5 seconds	51° 14' 09.308N 003° 11' 22.163W	3
Wave Rider	Data Buoy	1nm	5 flashes (yellow) every 20 seconds	51° 13' 35.4N 003° 11' 21.3W	N/A

For the purposes of navigational safety, these AtoN are to help mariners identify the area in which the Hinkley Point C Marine Works Principal Contractor will be undertaking construction works at sea, for the duration of the project.

All mariners are advised to proceed with caution if wishing to pass through or around this area until further notice.

For further marine safety information/advice relating to this area, please refer to HPC Local Notice to Mariners 14 of 2021 – 'Hinkley Point C Marine Works Offshore/CDM Area Marine Co-ordination Centre'.

Or contact the Marine Works Principal Contractor's Marine Coordination Centre (MCC) as per details below:

**MCC Duty Contacts (manned 24hrs):**

**Mobile: +44 (0)7832 886 650**

**Landline: +31 (0)850 081 689**

**Email: [mc@mcsnl.com](mailto:mc@mcsnl.com)**

## Harbour Master – Hinkley Point C Harbour Authority

EDF Energy - Nuclear New Build, Hinkley Point C, Somerset, TA5 1UF.

Tel: **0333 009 7070** (24hr)

[hinkley-enquiries@nnb-edfenergy.com](mailto:hinkley-enquiries@nnb-edfenergy.com)

[www.edfenergy.com/download-centre](http://www.edfenergy.com/download-centre)

**Owners, Agents, Charterers, Marinas, Yacht Clubs and Recreational Sailing Organisations should ensure that the contents of this Notice are made known to the masters or persons in charge of their vessels or craft.**