

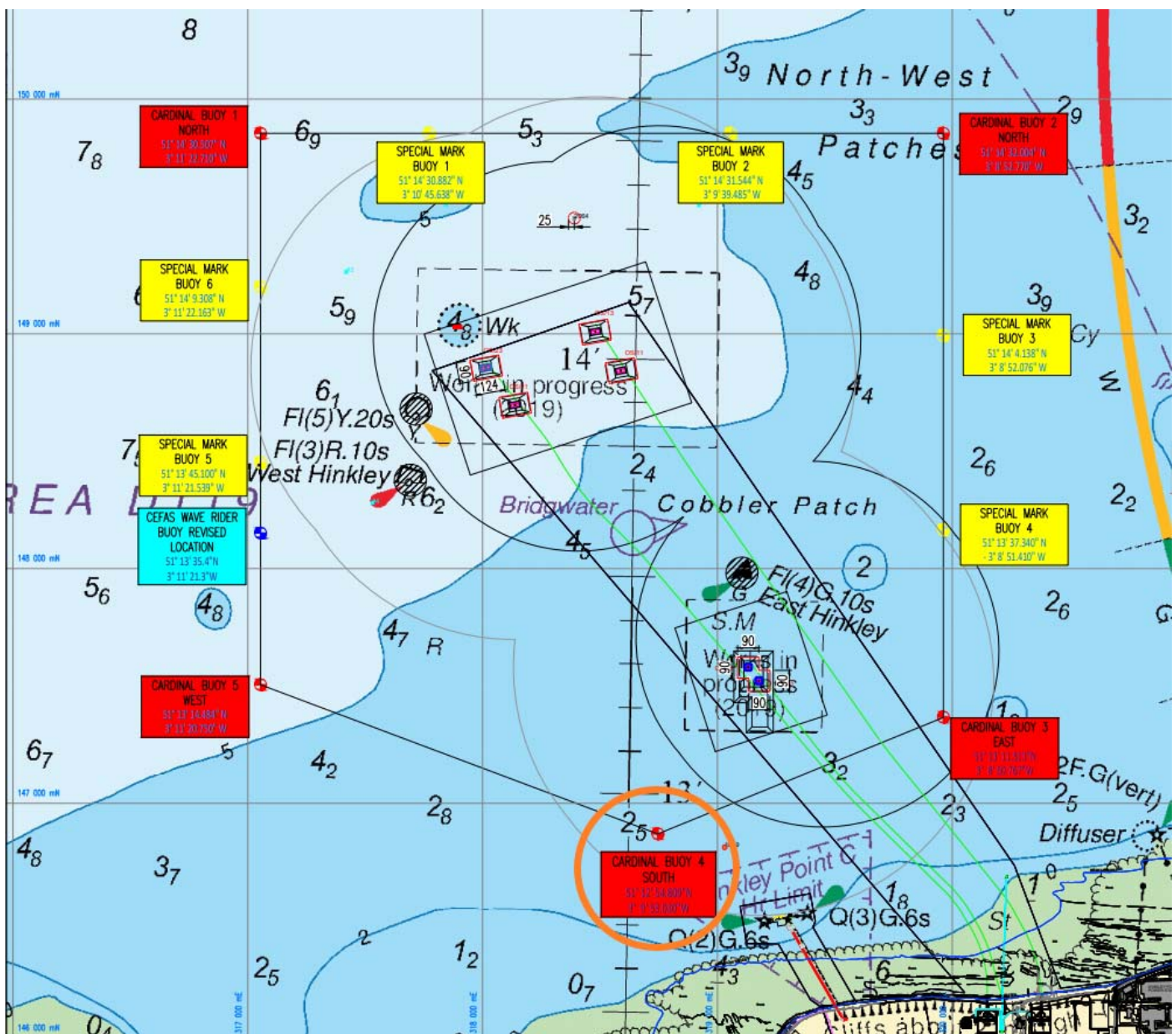
LOCAL NOTICE TO MARINERS NO 26 OF 2021

Hinkley Point C Marine Works Aids to Navigation

24/09/2021

Mariners are advised that the following HPC Marine Works Principal Contractor's AtoN are now in place, apart from 'Cardinal Buoy 4 South' (circled in orange), which will be installed in approximately three weeks' time.

Please also note the installation of the CEFAS Wide Rider Buoy (highlighted blue in the diagram below).



Owners, Agents, Charterers, Marinas, Yacht Clubs and Recreational Sailing Organisations should ensure that the contents of this Notice are made known to the masters or persons in charge of their vessels or craft.

Hinkley Point C Harbour Authority LOCAL NOTICE TO MARINERS

Buoy Ref	Designation	Range	Characteristics	Position (WGS84)
Cardinal 1	North	3-5nm	Quick flash (white) - 0.2s on 0.8s off continuous	51° 14' 30.507N 003° 11' 22.710W
Cardinal 2	North	3-5nm	Quick flash (white) - 0.2s on 0.8s off continuous	51° 14' 32.004N 003° 08' 52.770W
Cardinal 3	East	3-5nm	Flashes 3 times (white) every 10 seconds	51° 13' 11.513N 003° 08' 50.767W
Cardinal 5	West	3-5nm	Flashes 9 times (white) every 15 seconds	51° 13' 14.484N 003° 11' 20.750W
Special 1	Special Mark	3nm	1 flash (yellow) every 5 seconds	51° 14' 30.882N 003° 10' 45.638W
Special 2	Special Mark	3nm	1 flash (yellow) every 5 seconds	51° 14' 31.544N 003° 09' 39.485W
Special 3	Special Mark	3nm	1 flash (yellow) every 5 seconds	51° 14' 04.138N 003° 08' 52.076W
Special 4	Special Mark	3nm	1 flash (yellow) every 5 seconds	51° 13' 37.340N 003° 08' 51.410W
Special 5	Special Mark	3nm	1 flash (yellow) every 5 seconds	51° 13' 45.100N 003° 11' 21.539W
Special 6	Special Mark	3nm	1 flash (yellow) every 5 seconds	51° 14' 09.308N 003° 11' 22.163W
Wave Rider	Data Buoy	1nm	5 flashes (yellow) every 20 seconds	51° 13' 35.4N 003° 11' 21.3W

For the purposes of navigational safety, these AtoN are to help mariners identify the HPC Principal Contractors Marine Works Area.

All mariners are advised to proceed with caution if wishing to pass through or around this area.

For further marine safety information/advice relating to this area, please refer to HPC Local Notice to Mariners 14 of 2021 - Hinkley Point C Marine Works Offshore/CDM Area Marine Co-ordination Centre.

Or contact the Principal Contractors 'Marine Coordination Centre', as per details below:

MCC Duty contacts (manned 24hrs):

Mobile: +44 7832886650

Landline: +31 850081689

Email: mc@mcsnl.com

NOTE: A further Local Notice to Mariners will be issued upon successful installation of 'Cardinal Buoy 4 South'.

**Nick Clarence AFNI
Harbour Master – Hinkley Point C**

EDF Energy - Nuclear New Build, Hinkley Point C, Somerset, TA5 1UF

Tel. **0800 096 9650** (24hr)

hinkley-enquiries@edf-energy.com

www.edfenergy.com/hpcha

Owners, Agents, Charterers, Marinas, Yacht Clubs and Recreational Sailing Organisations should ensure that the contents of this Notice are made known to the masters or persons in charge of their vessels or craft.