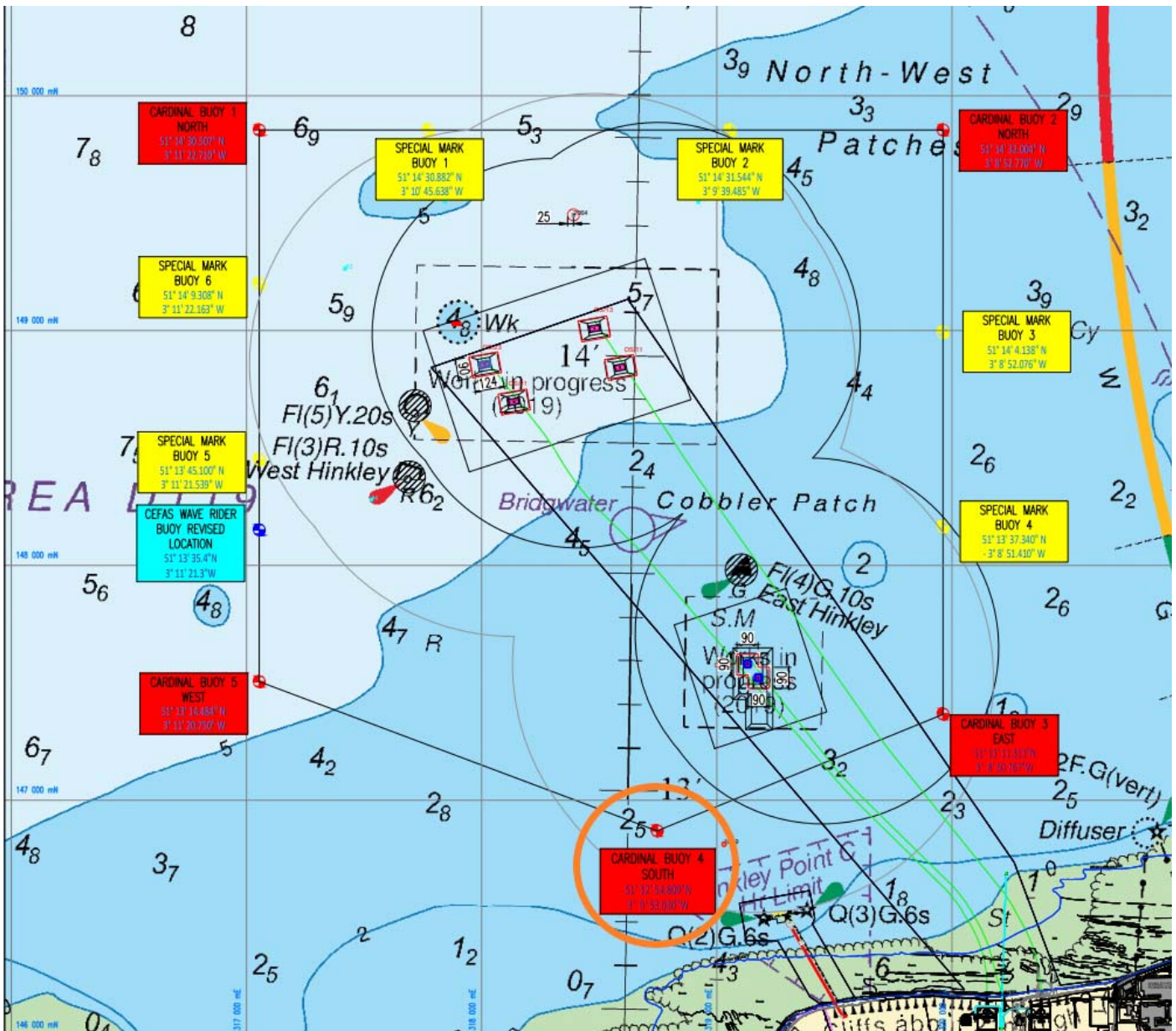


LOCAL NOTICE TO MARINERS NO 25 OF 2021

Hinkley Point C Marine Works Aids to Navigation Installation works – updated positions

23/08/2021

Mariners are advised that the following HPC Marine Works AtoN will be installed from Monday 23 August, apart from Cardinal Buoy 4 South (circled in orange), which will be installed later, in approximately 6-8 weeks.



Owners, Agents, Charterers, Marinas, Yacht Clubs and Recreational Sailing Organisations should ensure that the contents of this Notice are made known to the masters or persons in charge of their vessels or craft.

Hinkley Point C Harbour Authority LOCAL NOTICE TO MARINERS

Buoy Reference	WGS84		OSGB36 (OSTN02)	
	Latitude	Longitude	Easting	Northing
Cardinal Buoy 1 North	51° 14' 30.507"N	3° 11' 22.710"W	317054	149854
Cardinal Buoy 2 North	51° 14' 32.004"N	3° 8' 52.770"W	319962	149854
Cardinal Buoy 3 East	51° 13' 11.513"N	3° 8' 50.767"W	319962	147367
Cardinal Buoy 4 South	51° 12' 54.809"N	3° 9' 53.030"W	318746	146870
Cardinal Buoy 5 West	51° 13' 14.484"N	3° 11' 20.750"W	317054	147505
Special Mark Buoy 1	51° 14' 30.882"N	3° 10' 45.638"W	317773	149854
Special Mark Buoy 2	51° 14' 31.544"N	3° 9' 39.485"W	319056	149854
Special Mark Buoy 3	51° 14' 4.138"N	3° 8' 52.076"W	319962	148993
Special Mark Buoy 4	51° 13' 37.340"N	3° 8' 51.410"W	319962	148165
Special Mark Buoy 5	51° 13' 45.100"N	3° 11' 21.539"W	317054	148451
Special Mark Buoy 6	51° 14' 9.308"N	3° 11' 22.163"W	317054	149199
Wave Rider Buoy	51° 13' 35.4"N	3° 11' 21.3"W	317054	148151

For the purposes of navigational safety, these AtoN are to help mariners identify the HPC Principal Contractors Marine Works Area.

All mariners are advised to proceed with caution if wishing to pass through this area.

For further marine safety information relating to this area, please refer to HPC Local Notice to Mariners 14 of 2021 - Hinkley Point C Marine Works Offshore/CDM Area Marine Co-ordination Centre. Or contact the Marine Coordination Centre as per details below:

MCC Duty contacts (manned 24hrs):
 Mobile: +44 7832886650
 Landline: +31 850081689
 Email: mc@mcsnl.com

Further Local Notice to Mariners will be issued as required following the successful installation of all these Aids to Navigation.

For further information, please contact the Harbour Master via the contact details below

Nick Clarence AFNI
Harbour Master – Hinkley Point C

EDF Energy - Nuclear New Build, Hinkley Point C, Somerset, TA5 1UF Tel. 0800 096 9650 (24hr) hinkley-enquiries@edf-energy.com www.edfenergy.com/hpcha
--

Owners, Agents, Charterers, Marinas, Yacht Clubs and Recreational Sailing Organisations should ensure that the contents of this Notice are made known to the masters or persons in charge of their vessels or craft.