

Welcome

Agenda – Transport Forum – Online 22 July 2021

1. Welcome and Introductions
2. Meeting note and matters arising from the Forum held on: 18 March 2021 - (Chair)
3. Project Progress Update - (Andrew Cockcroft, EDF)
4. Update from Transport Review Group – (Rachel Lister, EDF)
5. Transport Update - (Jon Hall, Brian Buckingham, EDF)
6. Any other business - (Chair)
7. Date of next meeting: Thursday 25 November 2021 at 6pm

Item 3: Project Progress Update

Andrew Cockcroft

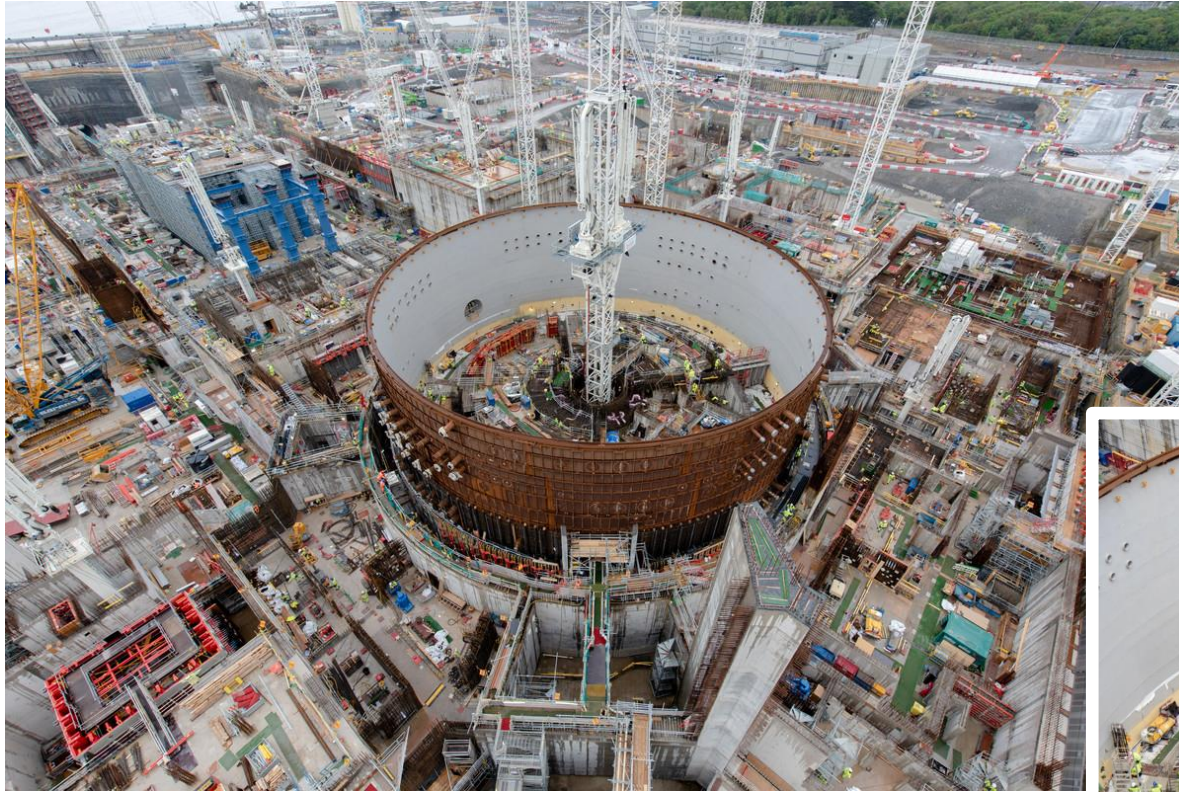
Senior Manager – Community Relations

Progress Update

- Eight of '21 in 21' milestones set for Q1 and 2 achieved.
- c.70,000m3 concrete placed in Q2 vs. 30,000 placed in Q1.
- Further progress taking place off site with suppliers across the UK.
- HPC Documentary on BBC2 – Series 2 to follow in 2023.
- Discussions between EDF and Local Authorities on workforce increases are continuing.
- Covid-19 – Project roadmap under review as cases remain low and c.60% of the workforce receiving at least one vaccination.



Unit 1: Nuclear Island



- Continued progress towards dome-lift at the end of 2022.
- Focus on vent and drain system and construction of inner and outer walls.
- Safeguard buildings now under construction.



Unit 2: Nuclear Island



- Knowledge gained on Unit 1 used to increase efficiency and productivity.
- This experience will be passed on to the construction of SZC.
- On average it took 25 hours to install a tonne of rebar on Unit 1, on Unit 2 the average is 16 hours – **an improvement factor of 1.6**
- Construction time for the second liner cup floor was **c.30% quicker than Unit 1**

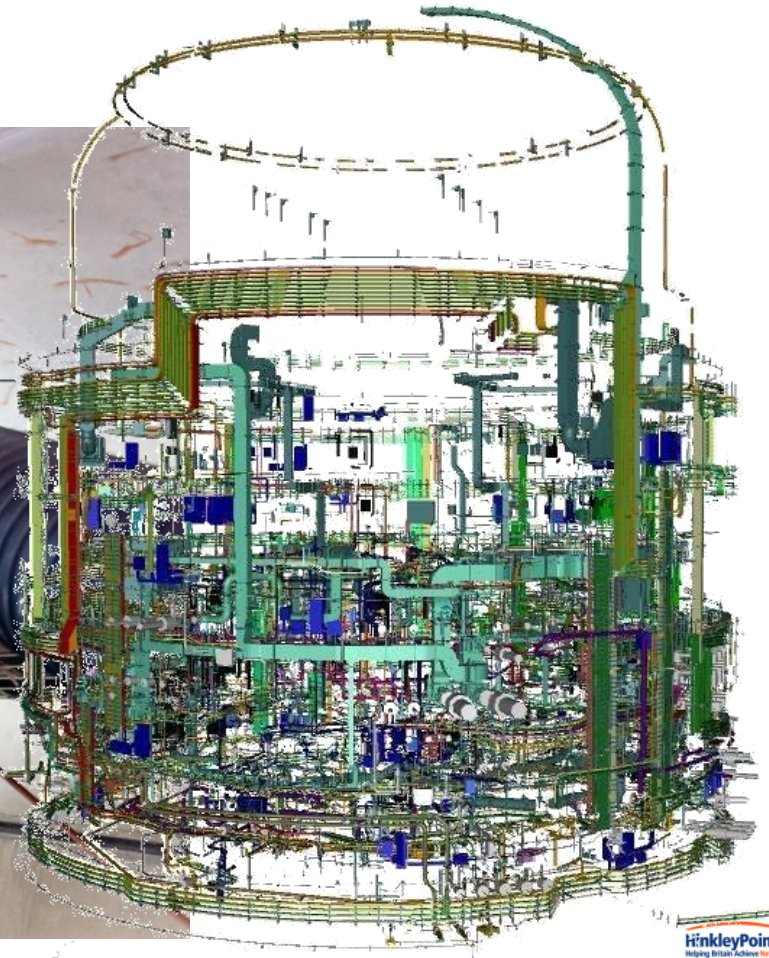
Unit 1: Conventional Island



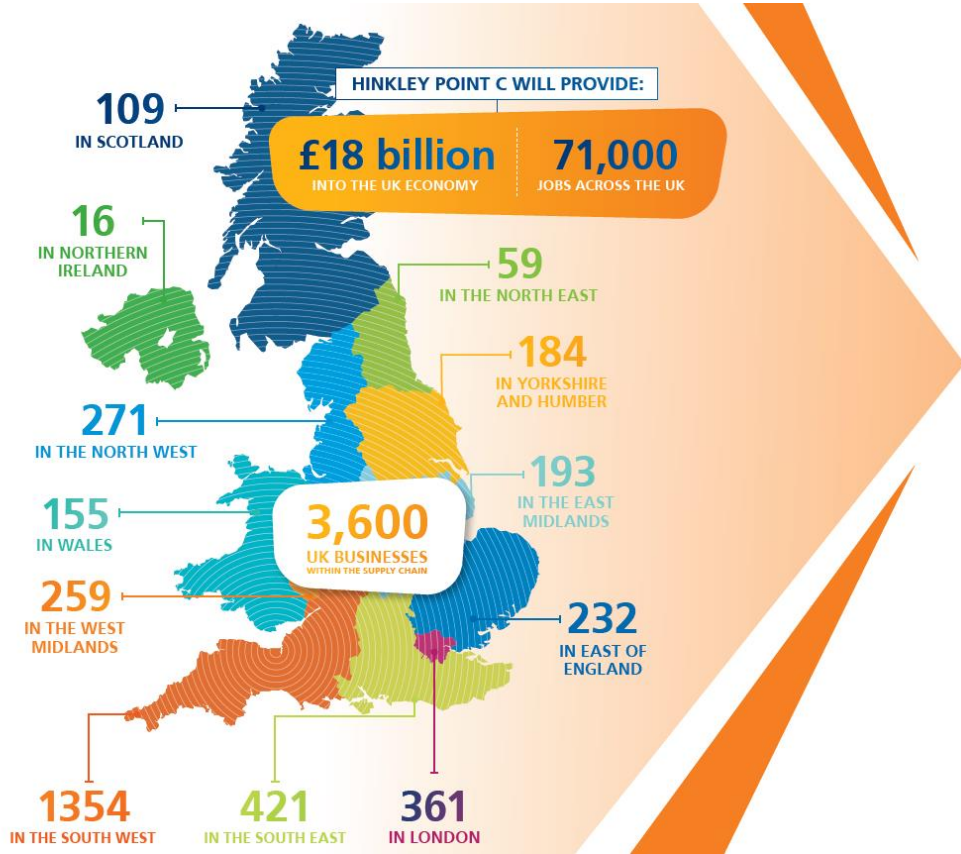
- **15 Turbine Generator Columns** made in South Wales.
- **2,500m³ concrete table** to be poured later this year.



Mechanical and Electrical Installation



Hinkley Point C: Supporting British industry



 **£18 Billion**

The **total projected economic value** to the UK.

 **71,000**

The **total projected jobs** to be supported by the project.

 **£3.2 Billion**

spent with companies in the South West to date against a target of £1.5 billion during construction.

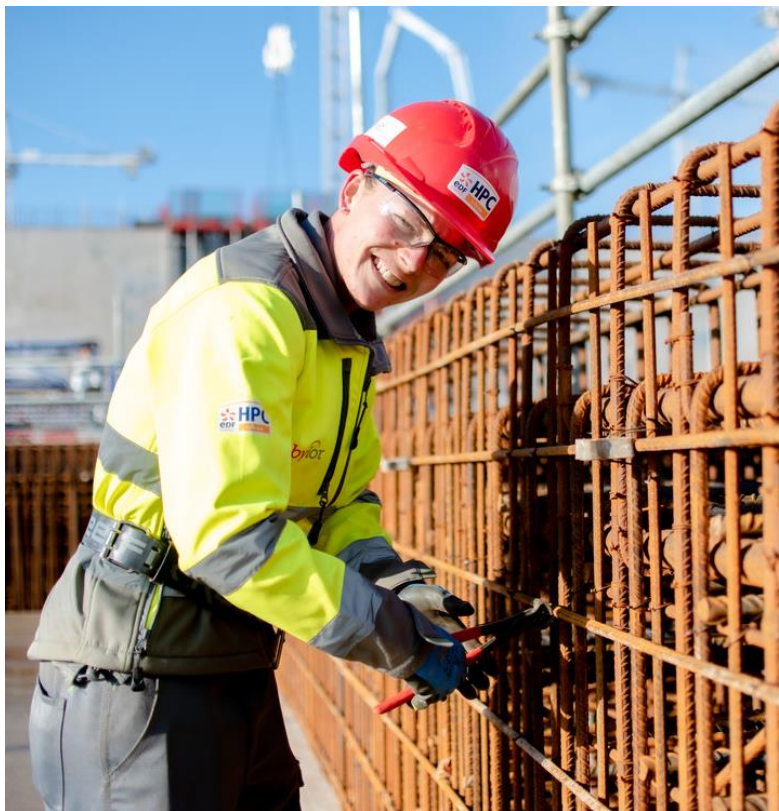
 **£140 Million**

spent with companies in Wales to date.

 **64%**

of the value of Hinkley Point C contracts have been awarded to UK-based companies to date against a target of 57%.

Hinkley Point C: Training the next generation



 **756**
apprentices trained
on the project to date.

 **234**
educational institutions
engaged in 2020.

 **250**
people trained and assessed
at the Welding Centre of
Excellence, Bridgwater.

 **13,842**
people trained and assessed
at the Construction Skills and
Innovation Centre, Bridgwater.

 **£19** Million
of investment to support local training,
education and skills provision. Over
£40 million of direct funding has been
accessed as a result.

Hinkley Point C: Investing in the local community



Infrastructure improvements such as new cycle routes.



Home-Start West Somerset is one of 84 projects we've supported so far.



£11 Million

provided so far to local projects from the **Hinkley Point C Community Fund**.



75

groups and individuals are represented on **Hinkley Point C's Community Forum**.



£123 Million

of **community investment** delivered to date against a target of providing £130 million to support the community.



Combwich Wharf



- Piling works complete.
- Completed the large concrete pour for the relieving slab (*the area which loads will be offloaded onto)
- Next step will involve the removal of the legato wall.
- Port of Bristol carrying out maintenance works on the marine infrastructure.
- We are preparing for the Operational Phase of Combwich Wharf, which will see large loads being delivered by sea.
- Ahead of this phase we'll be letting local residents along the C182 route know how they can stay up to date and receive notifications.

Pre-submitted Questions – Project Progress Update

Point regarding the presentations and format:

- *Please would you incorporate the ‘previously asked questions’ into the Presentation Pack for the last Community Forum?*
- *For this Transport Forum, slides 9 and 11 are identical.*

Questions:

- Question 1) “Slide 4: Episodes 1 & 2 of the HPC BBC2 documentary were so appallingly reviewed by all the national papers, it’s hard to believe there will be a series 2. Unless EdeF is paying the BBC to screen it?”
- Question 2) Where does the figure of £130million to ‘support the community’ come from? The only figure that’s familiar is the £20million of CIM.

- submitted by Roy Pumfrey, Stop Hinkley

Thank You

Item 4: Update from Transport Review Group

2021 Q1 / Q2 – Transport Forum Summary

Rachel Lister

EDF

Transport Review Group Quarterly Report

- This presentation provides a summary of the Transport Review Group Quarterly Report for January to June 2021 (Q1 and Q2):
 - Construction Workforce Travel Plan (CWTP); and
 - Construction Traffic Management Plan (CTMP).
- Presented to the Transport Review Group (TRG) on 26 April and 19 July 2021.
- This presentation is for information to the Transport Forum.
- Transport Forum is responsible for collating views from the public and forms the key link between the TRG and the wider community and provides an indication of the HPC transport issues that are impacting the general public.



Construction Workforce Travel Plan (CWTP)

Final Journey to HPC	Target	Q1 (23/03/21) Workforce	%	Q2 (22/06/21) Workforce	%
Walk	9%	668	12.6%	585	10.3%
Cycle	0%	17	0.3%	34	0.6%
Motorcycle	0%	32	0.6%	66	1.2%
Car	4%	185	3.5%	204 (156 on own & 48 car sharing)	3.5%
HPC Bus Service	87%	4,410	83.0%	4,802	84.4%
Total	100%	5,312	100%	5,691	100%

Construction Workforce Travel Plan (CWTP)

- Final Journey to HPC Site (last Quarter)



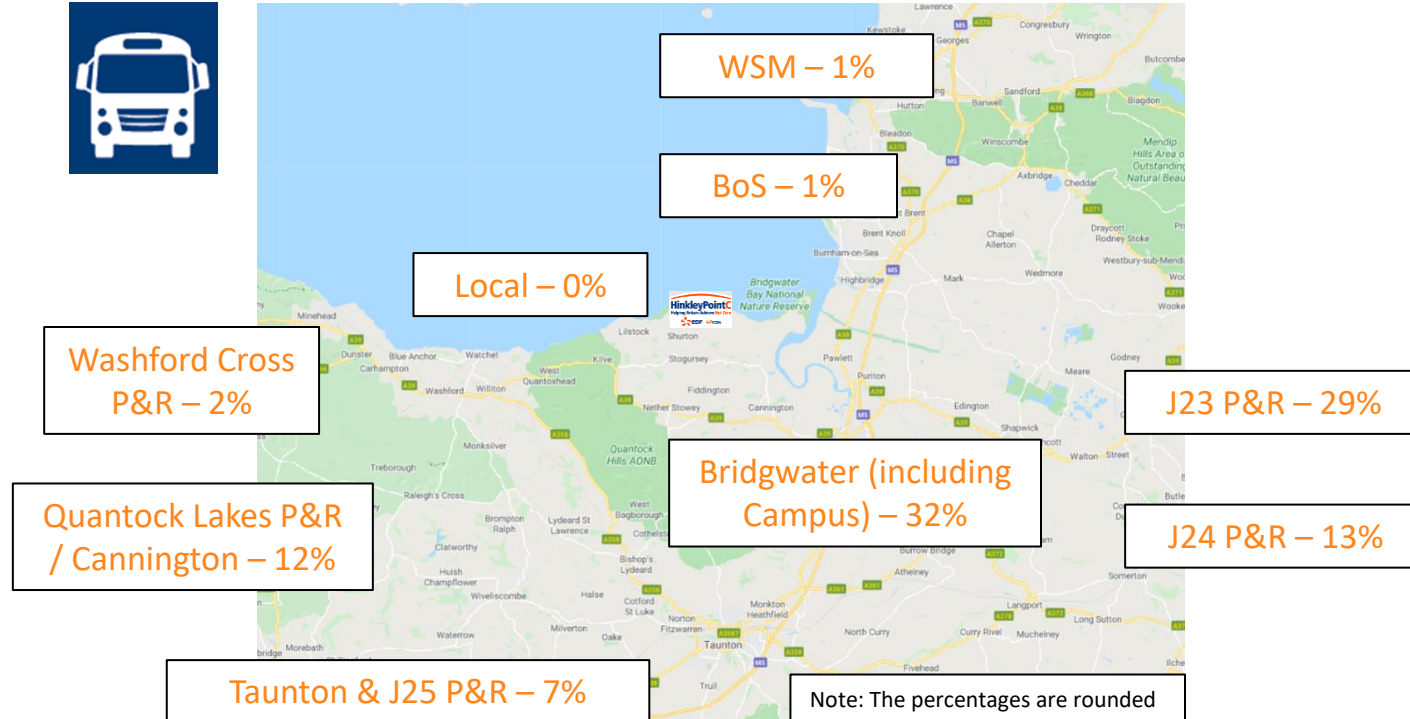
84.4%



10.3%

Construction Workforce Travel Plan (CWTP)

- HPC Bus Passengers from Key Locations (last Quarter)



Construction Workforce Travel Plan (CWTP)

HPC Helpline Complaints	Q1		Q2	
Fly Parking complaints received by HPC Helpline	23 (all followed up below)		15 (all followed up below)	
HPC Worker not Fly Parking	0	0%	4	27%
HPC Worker Fly Parking	6	26%	8	53%
Not a HPC Worker	17	74%	3	20%

- Less than 1% (0.13%) were found to be fly parking based on the workforce number (6,009 in May 2021)

Construction Traffic Management Plan (CTMP)

- HGV Movements against HGV Average / Maximum Daily / Quarterly Limit for HGV Routes – Q1

HGV Movements	DCO Cap (Movements)	Average Daily Movements	Maximum Movements on any day (Mon-Fri)	Maximum Movements on any day (Sat)
HGV Movements	500 Average 750 (Mon to Fri) 375 (Sat)	168	276	34
HGV Route 1 (J23)	450	133	217	34
HGV Route 2 (J24)	300	33	84	0

Construction Traffic Management Plan (CTMP)

- HGV Movements against HGV Average / Maximum Daily / Quarterly Limit for HGV Routes – Q2

HGV Movements	DCO Cap (Movements)	Average Daily Movements	Maximum Movements on any day (Mon-Fri)	Maximum Movements on any day (Sat)
HGV Movements	500 Average 750 (Mon to Fri) 375 (Sat)	201	320	102
HGV Route 1 (J23)	450	148	241	102
HGV Route 2 (J24)	300	52	120	0

Construction Traffic Management Plan (CTMP)

- Time Restrictions - HGV Movements (Q1)

HGV Movements	DCO Cap (Movements)	Average Daily Movements	Maximum Movements on any day (Mon-Fri)	Maximum Movements on any day (Sat)
07:00 - 07:59	40	13	18	14
08:00 – 08:59	30	17	26	4
09:00 – 09:59	50	19	31	7
10:00 – 10:59	No CAPS	17	31	10
11:00 - 11:59		19	36	2
12:00 – 12:59		19	37	1
13:00 – 13:59		16	35	6
14:00 – 14:59		17	29	0
15:00 – 15:59		18	31	2
16:00 – 16:59	50	12	28	0
17:00 – 17:59	40	4	11	2
18:00 – 18:59	40	1	12	0
19:00 – 21:59	No CAPS	2	9	0

Construction Traffic Management Plan (CTMP)

- Time Restrictions - HGV Movements (Q2)

HGV Movements	DCO Cap (Movements)	Average Daily Movements	Maximum Movements on any day (Mon-Fri)	Maximum Movements on any day (Sat)
07:00 - 07:59	40	13	19	18
08:00 – 08:59	30	19	30	22
09:00 – 09:59	50	21	34	6
10:00 – 10:59	No CAPS	22	39	7
11:00 - 11:59		25	50	7
12:00 – 12:59		23	41	15
13:00 – 13:59		24	51	12
14:00 – 14:59		21	45	9
15:00 – 15:59		22	49	12
16:00 – 16:59	50	18	36	4
17:00 – 17:59	40	10	24	1
18:00 – 18:59	40	4	12	1
19:00 – 21:59	No CAPS	6	11	0

Construction Traffic Management Plan (CTMP)

- 38 breaches (0.30% of total HGV movements) during Q1
 - 1 HGV outside of permitted delivery hours
 - 0 HGV over permitted time limit
 - 36 HGVs deviated from the approved route
 - 1 HGV deviated from HGV route and outside of permitted delivery hours
- 35 breaches (0.22% of total HGV movements) during Q2
 - 3 HGV outside of permitted delivery hours
 - 0 HGV over permitted time limit
 - 32 HGVs deviated from the approved route

Construction Traffic Management Plan (CTMP)

- Q1 (average):

Daily HGV Movements	Daily HGV Deliveries
168	99

(below 500 DCO Limit)

- Q2 (average):

Daily HGV Movements	Daily HGV Deliveries
201	114

(below 500 DCO Limit)

- Forecast Q3

Daily HGV Movements	Daily HGV Deliveries
288	144

Thank You

Item 5: Transport Update

Jon Hall, Brian Buckingham
EDF

Transport Update

HPC Passenger Transport updates for August:

- Removal of reduced capacity limits on HPC bus services
- Screens on HPC bus services will be removed, except those around the driver
- Face coverings will remain as a mandatory condition of travel
- Certain bus routes will recommence service:
 - Homberg Way (NDR)
 - Stogursey/Burton/Shurton
 - Cannington Spar
 - Combwich
- The parking enforcement team has grown with newly trained officers deployed into the local community
- The SPS Customer Service team has also grown to better support passenger and community enquiries.

Transport Update

C182 Works

- The C182 culvert strengthening works concluded in June

Combwich Wharf

- First marine AIL delivery through the refurbished Combwich Wharf is currently scheduled for September

HGVs

- There are no general HGV related updates, but we remain well below the DCO caps.

Item 6: Any other business

Chair

Item 7: Date of next meeting

- **Thursday 25 November 2021 at 6pm**

FORUM DATES FOR 2021 (also available at www.edfenergy.com/hpccommunity)

2021 dates for the Community, Main Site and Transport Forums.

All 6pm start and on Thursdays – online until further notice.

Community Forum	<i>21st January 2021</i>	<i>20th May 2021</i>	23rd September 2021
Main Site Forum	<i>4th March 2021</i>	<i>24th June 2021</i>	21st October 2021
Transport Forum	<i>18th March 2021</i>	<u><i>22nd July 2021</i></u>	25th November 2021

Thank You