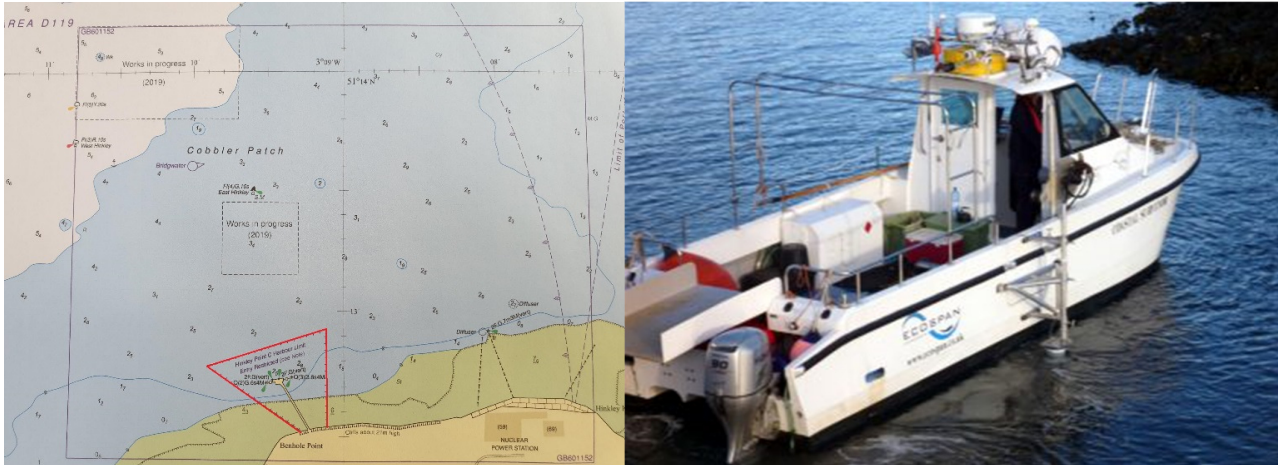


## LOCAL NOTICE TO MARINERS NO 09 OF 2021

# Hinkley Point C Harbour Authority Bathymetric Survey

12/04/2021

Mariners are advised that a bathymetric survey is being conducted within the Hinkley Point C Harbour Authority Limits on Thursday 15<sup>th</sup> April.



The research vessel Coastal Surveyor will be conducting these works during daylight hours. The vessel will maintain a listening watch on VHF channel 16 and 87.

Name	Type of vessel	Call Sign	MMSI number	Length
RV Coastal Surveyor	Sea Cheetah catamaran	ZDLF9	235079951	7.9m

Vessels within this area are requested to proceed with caution and maintain a safe distance from this vessel.

This notice will be self-cancelling on completion of these works.

For further information, please contact the Harbour Master via the contact details below.

**Nick Clarence AFNI**  
**Harbour Master - Hinkley Point C**

EDF Energy - Nuclear New Build, Hinkley Point C, Somerset, TA5 1UF

Tel. **0800 096 9650** (24hr)

[hinkley-enquiries@edf-energy.com](mailto:hinkley-enquiries@edf-energy.com)

[www.edfenergy.com/hpcha](http://www.edfenergy.com/hpcha)

**Owners, Agents, Charterers, Marinas, Yacht Clubs and Recreational Sailing Organisations should ensure that the contents of this Notice are made known to the masters or persons in charge of their vessels or craft.**