

Building **better energy** together

Welcome

Agenda – Transport Forum – Web Conference 16/07/20

1. Welcome and introductions
2. Meeting note / matters arising from last Forum held on: 26 March 2020 - (Chair)
3. Project Progress Update - David Eccles, EDF
4. Update from Transport Review Group – Rachel Lister, EDF
5. Update on Bus Operations – Andrew Wagstaff, EDF / Jason Lee, SPS
6. Any other business – All
7. Date of next meeting: Thursday 26 November 2020 6pm

Item 3: Project Progress Update

David Eccles, EDF

Stuart Crooks, Hinkley Point C MD, discusses the project reaching its latest milestone – on YouTube

“Stuart Crooks gives his latest update from the project as it reaches its latest milestone - the completion of Unit 2's reactor building foundation”. (1 June 2020)

https://www.youtube.com/watch?v=yji0jpQJ8G0&feature=emb_rel_end

**Nuclear Island Unit 1, as seen from Nuclear Island Unit 1 HK tower.
Work continues here where we achieved J0 just 11 months ago**



Unit 1 Nuclear Island as seen from a tower crane



Unit 1 Conventional Island, showing turbine hall and HR electrical buildings



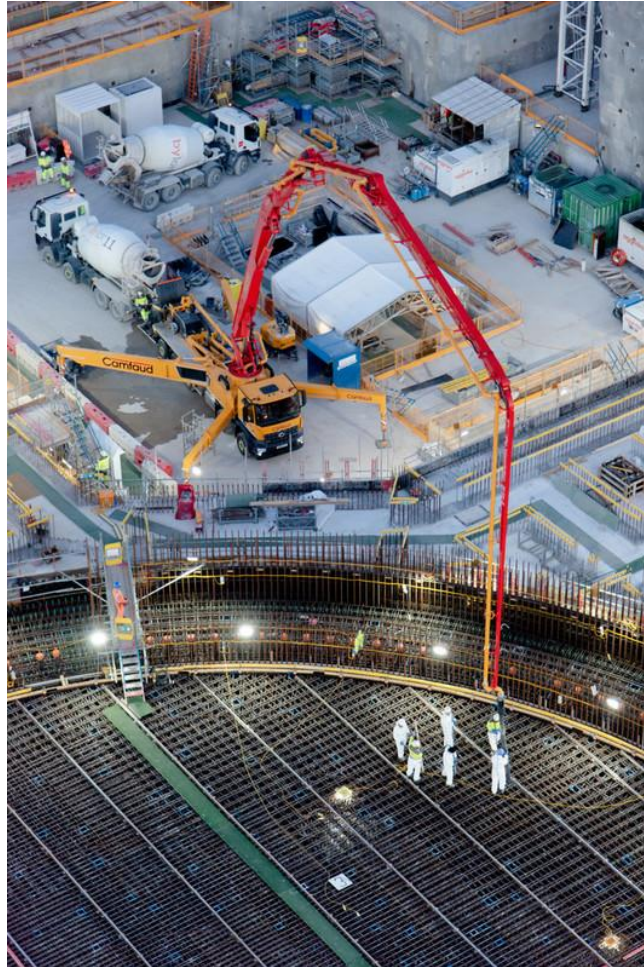
Unit 1 Heat Sink as seen from Unit 1 Conventional Island



J0 Unit 2, early photographs of concrete pour. The foundation, or common raft, is a cross shaped structure. The fifth and final concrete pour is in the circular central section



J0 Unit 2, concrete pour viewed from aerial platform



NOT PROTECTIVELY MARKED | ©2020 EDF Energy plc. All rights Reserved.

Unit 2 J0 final concrete pour as seen from a tower crane. Work can now begin on the permanent reactor buildings



Unit 2 Concrete pour. We have managed to achieve this milestone during the Coronavirus pandemic by adopting new, safe ways of working



A range of social distancing measures are in place at site, including automatic temperature monitoring, shift rotations and enhanced cleaning protocols

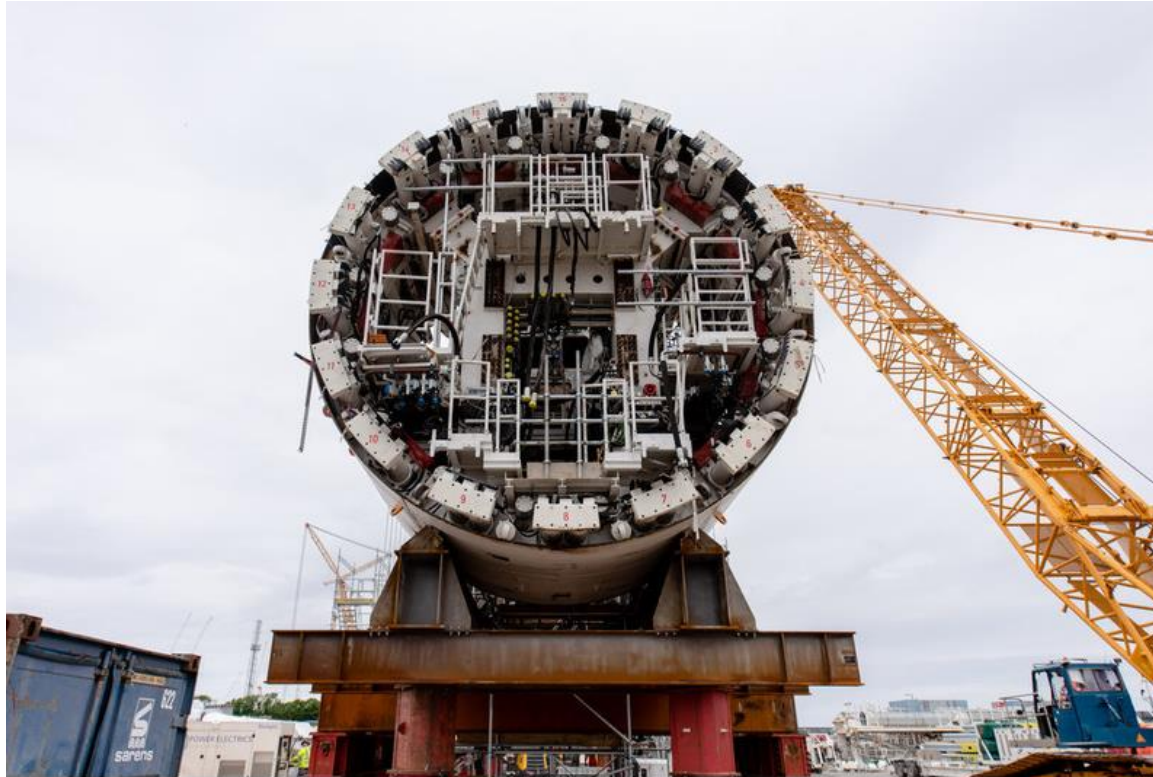


SGC250 known as Big Carl – largest land based crane in the world



Standing at 250 metres tall, it is taller than the London Eye and the Statue of Liberty. It has 52 counter weight containers each weighing 1000 tonnes, and is supported on 96 wheels travelling along a specially designed track.

Tunnel Boring Machine Assembly



Tunnel Boring Machine “Mary” being blessed ahead of activity, by our site Chaplain



Tunnel Boring Machine Intake Tunnel 1 – these now stretch approximately 1km under the Bristol Channel



A view of the concrete batching plant from an aerial platform. There are four batching plants capable of making 700m³ concrete per day – three are in use, and the fourth is a reserve



The concrete batching plant is essential to meet Hinkley Point C's need for nuclear safety grade concrete across the site



View of the jetty taken from one of the tower cranes on site. This is a temporary structure and operates in one of the highest tidal ranges in the world at 11 metres



**Deliveries being made to our jetty which became operational in Autumn 2019.
6000 tonnes of aggregate can be delivered per day by sea from Avonmouth,
Bristol**



KBJV – The finished sea wall as seen at high tide. It is built up of 308 Wave Return Units to protect the site



Thank You

Pre-submitted Question - Project Progress Update

“There is no mention of the silo collapse at HPC on 10 June in the project progress section. I would have expected EdeF to have reported to ONR by now and would be pleased to have an update, not just on the silo incident itself, but also the repercussions on traffic to/fro the site.”

- submitted by Roy Pumfrey, Stop Hinkley

Transport Review Group Quarterly Report

2020 Q1 – Transport Forum Summary

Transport Review Group Quarterly Report

- This presentation provides a summary of the Transport Review Group Quarterly Report for January to March 2020 (Q1):
 - Construction Workforce Travel Plan (CWTP); and
 - Construction Traffic Management Plan (CTMP).
- Presented to the Transport Review Group (TRG) on 27th April 2020.
- This presentation is for information to the Transport Forum.
- Transport Forum is responsible for collating views from the public and forms the key link between the TRG and the wider community and provides an indication of the HPC transport issues that are impacting the general public.

Construction Workforce Travel Plan (CWTP)

- Final Journey to HPC Site (25 / 26 /02/2020)

Final Journey to HPC	Target	No. of Workforce	%
Walk	9%	442	9%
Cycle	0%	15	0.3%
Motorcycle	0%	9	0.2%
Car	4%	155 (119 on own & 36 car sharing)	3.2% (2.4% on own & 0.7% car share)
HPC Bus Service	87%	4,260	87.3%
Total	100%	4,881	100%

Construction Workforce Travel Plan (CWTP)

- Final Journey to HPC Site



87.3%



9%



0.7%

Construction Workforce Travel Plan (CWTP)

- HPC Bus Passengers



Construction Workforce Travel Plan (CWTP)

- HPC Helpline Complaints – Fly Parking

HPC Helpline Complaints	Quarter	
Fly Parking complaints received by HPC Helpline	232 (227 followed up below)	
HPC Worker not Fly Parking	34	15%
HPC Worker Fly Parking	32	14.1%
Not a HPC Worker	161	70.9%

- Less than 1% (0.62%) were found to be fly parking based on workforce number

Construction Traffic Management Plan (CTMP)

- HGV Movements against HGV Maximum Daily Limit / Average Quarterly Limit for HGV Routes

HGV Movements	DCO Cap (Movements)	Average Daily Movements	Maximum Movements on any day (Mon-Fri)	Maximum Movements on any day (Sat)
HGV Movements	500 Average 750 (Mon to Fri) 375 (Sat)	184	303	55
HGV Route 1 (J23)	450	138	206	55
HGV Route 2 (J24)	300	46	124	0

Construction Traffic Management Plan (CTMP)

- HGV Movements against HGV Maximum Daily / Average Quarterly Limit for Time Restrictions

HGV Movements	DCO Cap (Movements)	Average Daily Movements	Maximum Movements on any day (Mon-Fri)	Maximum Movements on any day (Sat)
07:00 - 07:59	40	13	25	4
08:00 – 08:59	30	16	31	11
09:00 – 09:59	50	21	42	5
10:00 – 10:59	No CAPS	34	49	6
11:00 - 11:59		20	42	8
12:00 – 12:59		21	41	11
13:00 – 13:59		19	48	8
14:00 – 14:59		18	36	4
15:00 – 15:59		17	40	3
16:00 – 16:59	50	12	34	1
17:00 – 17:59	40	3	10	0
18:00 – 18:59	40	1	6	0
19:00 – 21:59	No CAPS	0	3	0

Construction Traffic Management Plan (CTMP)

- Breaches of HGV limits, time restrictions & HGV routes:
 - 26 non-compliances (0.18% of total movements)
- 1 HGV outside of permitted delivery hours
- 1 HGV over the permitted time limit
- 24 HGVS deviated from the approved HGV route

Following the increase in non-compliances:

- LED signage was installed at J23 FMF, which displays information regarding the approved routes specifically noting the use of The Drove (not Wylds Road).
- Recruiting for a new position that will enable more frequent and comprehensive driver inductions and briefs to take place before the HGV driver travels to HPC.

Thank You

Pre-submitted Questions – Transport

Question to Somerset County Council (SCC - Andy Coupe or Alyn Jones)

- Submitted by Gary Perrett - Sustrans & Community Cyclists

“Can 'no parking' markings be painted (or signs fitted, etc.) on the Cannington Grain Store lay-by area cycling & walking path?”

Explanation: Many vehicles and HGV's are parking in the lay-by adjacent to the Cannington Grain Store causing serious safety issues for pedestrians & cyclists. If a HGV is parked in this area (even close to the hedgerow), it will take up the whole of the new cycling & walking path and forces users to actually go out on to the road. The rule should be that no vehicles park in this lay-by area.

Pre-submitted Questions – Transport

Questions to Somerset County Council (SCC - Andy Coupe or Alyn Jones)

- Submitted by Gary Perrett - Sustrans & Community Cyclists

“Can the infrastructure improvements for cycling & walking in Bridgwater be seen as a priority and work started now?”

Explanation: The Transport Secretary Grant Schapps announced that “cycling & walking are going to be at the heart of the Governments transport policy”. A huge number of people are turning to sustainable transport, peoples attitudes are changing. This significant impetus should turn in to SCC dedicating more resources and staff hours to creating new cycling & walking routes in Bridgwater. Particularly when EDF S106 monies has been allocated and routes have been agreed, designed and ready to go!

Pre-submitted Questions – Transport

“Who is now responsible for the Washford Cross Roundabout? Has this been formally handed over to SCC highways?”

- Cllr Rosemary Woods, Williton Parish Council

Item 5: Update on Bus Operations

Andrew Wagstaff, EDF / Jason Lee, Somerset Passenger Solutions

HPC PASSENGER TRANSPORT TEAM

COVID 19 Enhancements and Best Practices

HPC Transport Forum Thursday 16 July 2020

Andrew Wagstaff, EDF



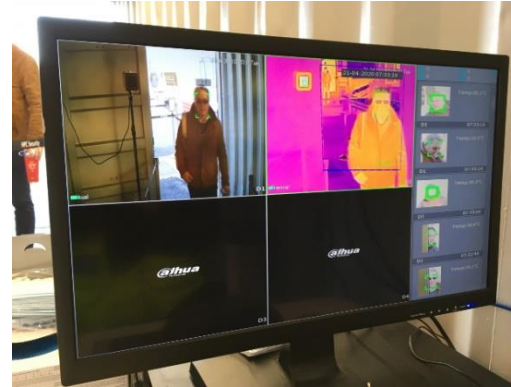
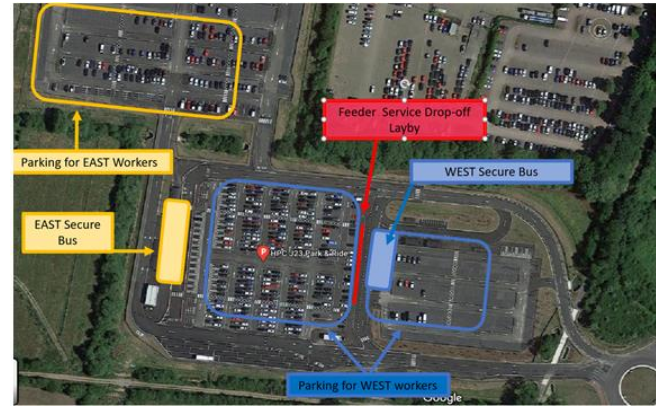
Yutong TC12 Driver and Passenger Screening



Bus Stand Disinfection



Automatic Thermal Imagery High Temperature Alarms



Vehicle Misting Disinfection



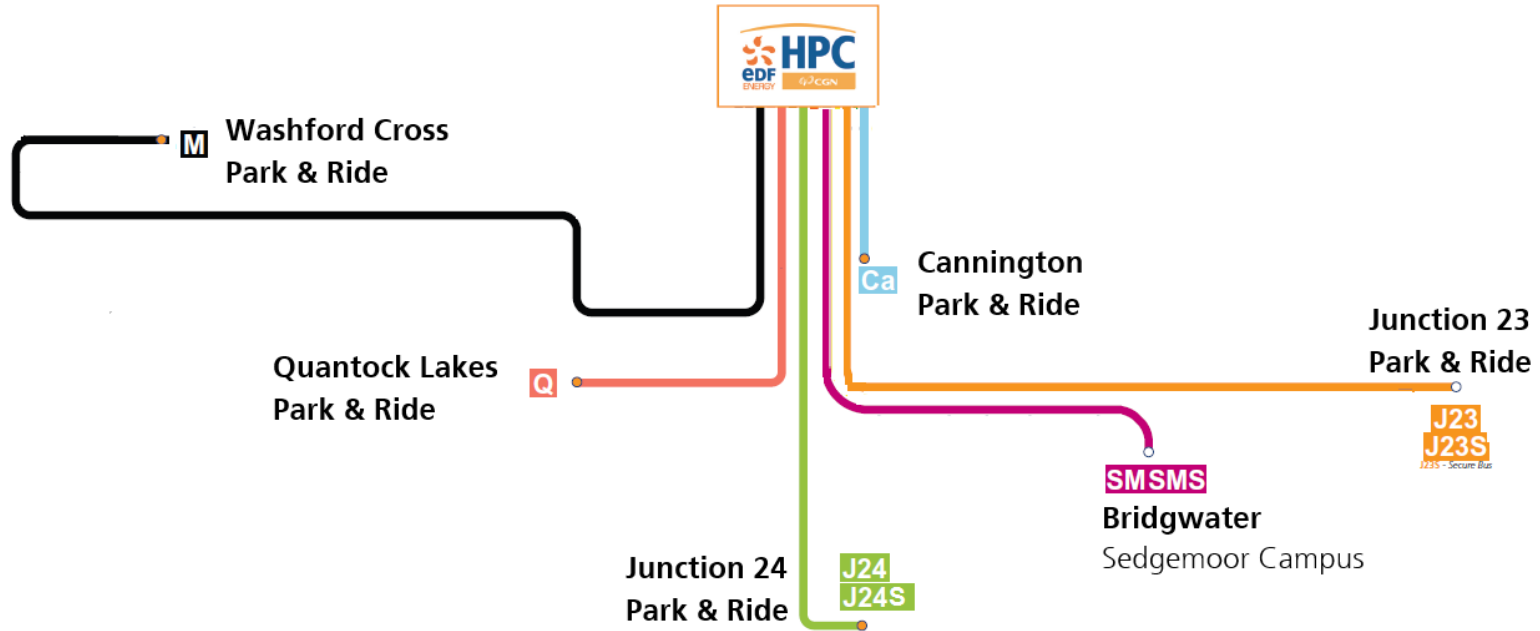
Social Distancing Indicators



Passenger Social Distancing



Centralised Passenger Hubs



Face Mask Policy

**STOP
THE SPREAD
OF CORONAVIRUS**



**No face coverings
No transportation**

In accordance with Government guidelines, to protect you and your colleagues from the potential spread of Coronavirus, it is mandatory to wear a face covering (face mask/snood/scarf covering your mouth and nose) on boarding SPS vehicles as a passenger. The face covering must be worn throughout the entirety of your journey. This rule applies to all internal and external SPS services.

If you do not wear a face covering you will not be permitted to board the vehicle. Disciplinary action may be taken against personnel not adhering to this policy.

Thank You

Pre-submitted Questions - Update on Bus Operations

“How many buses are now travelling daily to/fro HPC and how does this number compare with the pre-C-19 number?”

- Submitted by Roy Pumfrey, Stop Hinkley

“When can we see the reinstatement of the Bridgwater to Minehead Community Bus?”

- Cllr Rosemary Woods, Williton Parish Council

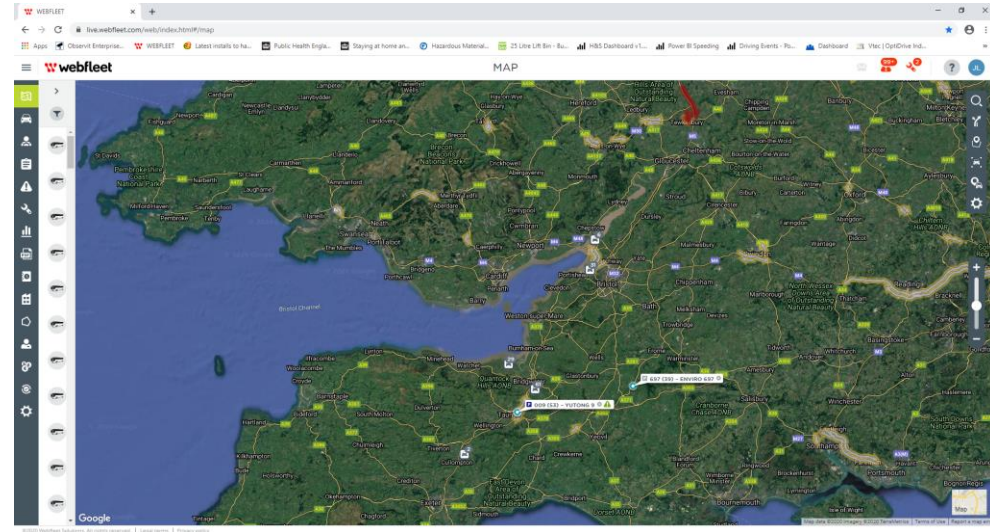


Onboard Systems



Purpose

- Provide Members of the Hinkley Point C, Transport Forum with an overview of SPS onboard systems.



Track the Fleet (LIVE)



Track Vehicles (Live)

▲ 040 (53) - YUTONG 40 ● ⚠
(27 mph) 09:16 AM 342 Bristol
Road, Bridgwater TA6 4BJ, GB

Message

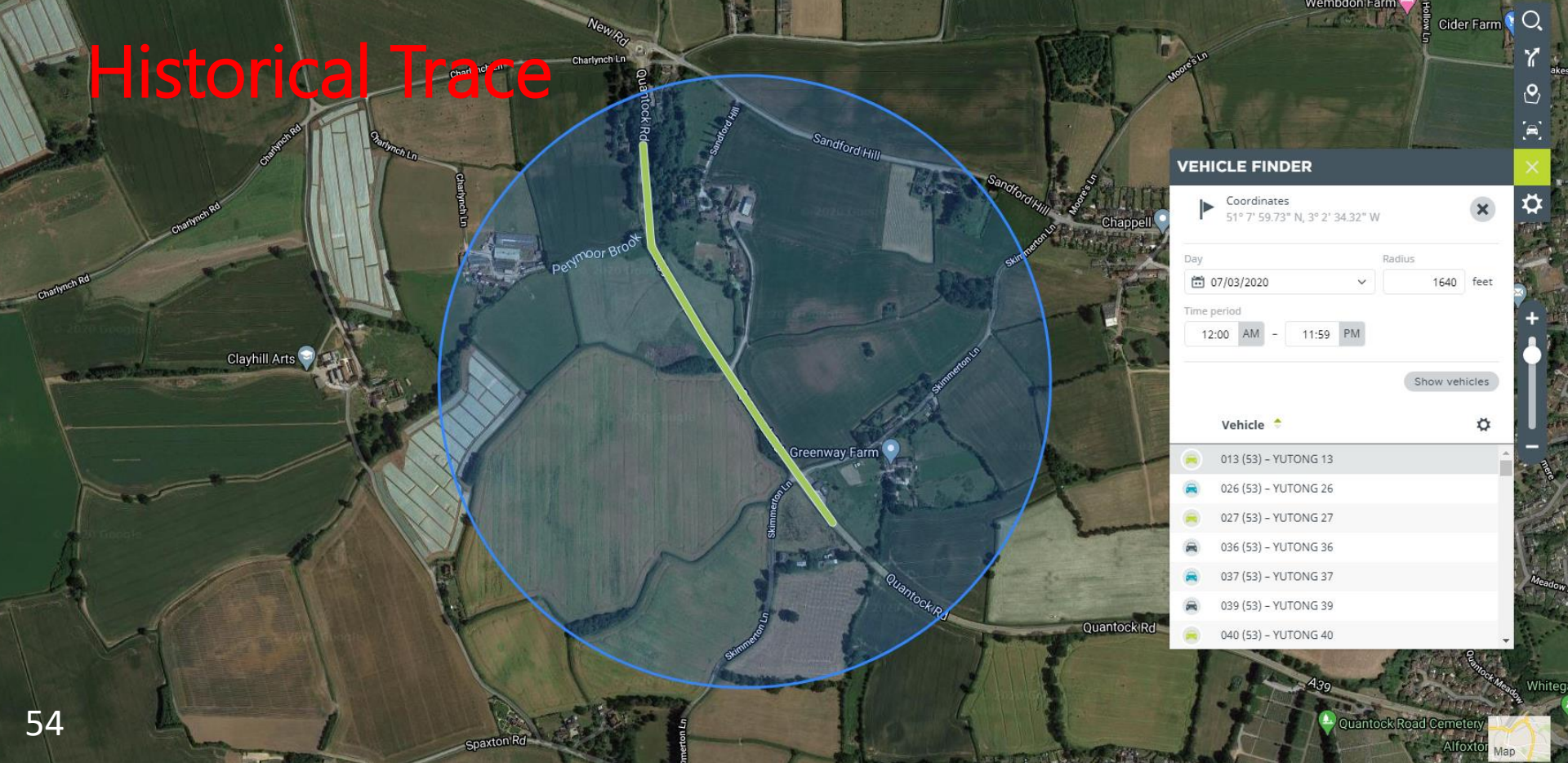
More

▲ 204 (83) - WRIGHTBUS 204 ● ⚠

▼ 008 (53) - YUTONG 8 ●

▲ 046 (53) - YUTONG 46 ●

Historical Trace



OPTIDRIVE INDICATOR

All groups

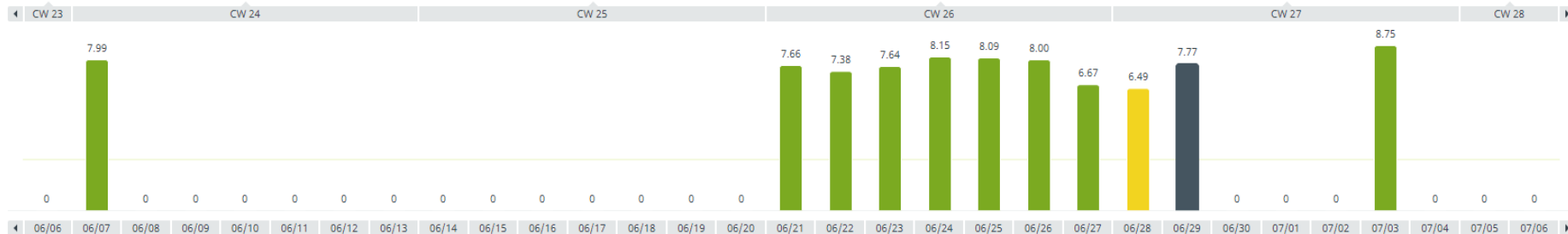
All groups

Day

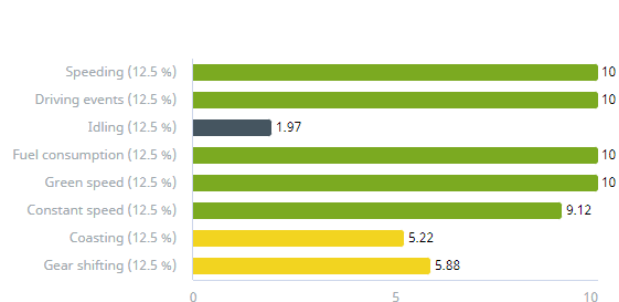
Week

Month

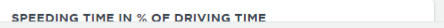
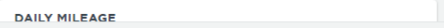
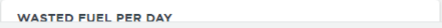
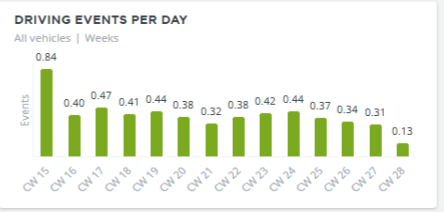
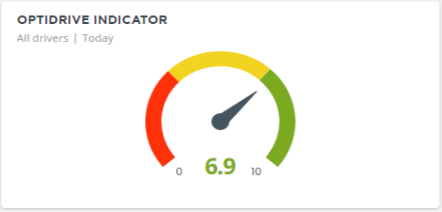
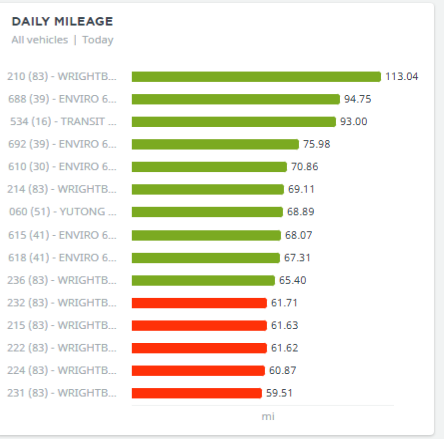
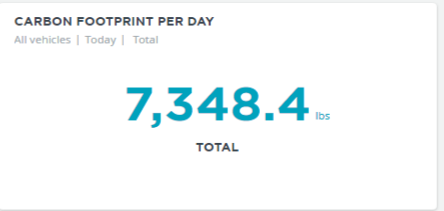
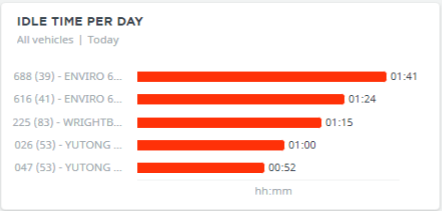
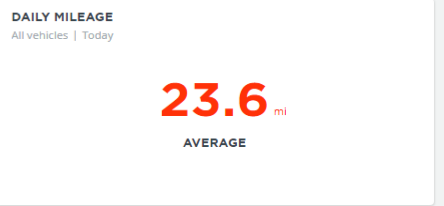
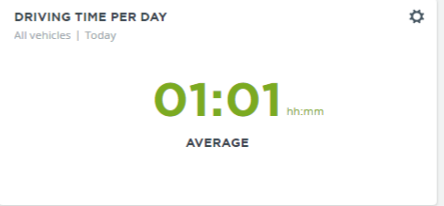
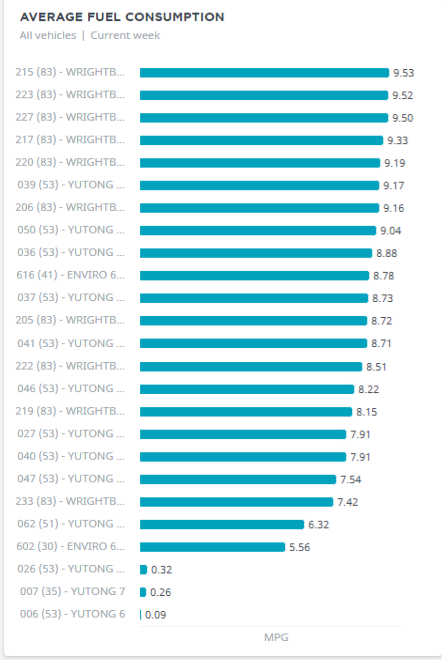
DAILY TREND FOR DAVID WILLIAMS B 2.73 Points 3.30 Points, 6.60 Points



DETAILS FOR 06/29



Time	Location	Fuel	Duration
06/29, 02:43 PM 06/29, 02:38 PM	South Plaza, Wick Moor Drove, Bridgwater TA5 1, GB	0.05 gal	5 min 26 s
06/29, 12:09 PM 06/29, 12:02 PM	Taunton Road, Bridgwater TA6 6PS, GB	0.07 gal	7 min 9 s
06/29, 07:22 AM 06/29, 07:15 AM	J23 Park and Ride, Bridgwater TA6 4, GB	0.05 gal	6 min 50 s



Reset to default New tile

56

WEBFLEET

live.webfleet.com/web/index.html#/reports

Apps Observit Enterprise... WEBFLEET Latest installs to ha... Public Health Engla... Staying at home an... Hazardous Material... 25 Litre Lift Bin - Bu... H&S Dashboard v1... Power BI Speeding Driving Events - Po... Dashboard Vtec | OptiDrive Ind...

REPORTS

99+ 2 ? JL

REPORTS (32)

Search

ON DEMAND ARCHIVE MANAGER

Area notification report

Basic Mileage Report

Contract details by vehicle

Contract details by vehicle

Current position report - KH

Daily Mileage Report

Daily summary

Driving events

Driving events

Excessive mileage report

Excessive speeding report

Fuel consumption report

Fuel consumption report

Fuel consumption report

New report

Area notification report

Basic Mileage Report

Contract details by vehicle

Contract details by vehicle

Current position report - KH

Daily Mileage Report

Daily summary

Driving events

Excessive mileage report

Excessive speeding report

Fuel consumption report

57

HPC

EDF ENERGY



Any Questions?

Item 6: Any other business

All

Item 7: Date of next meeting

Thursday 26 November 2020 6pm

Thank You

