

Building **better energy** together

Welcome

Agenda – Main Site Forum – Web Conference 25/06/20

1. Welcome and introductions
2. Meeting note / matters arising from last Forum held on: 27 February 2020 - (Chair)
3. Project Progress Update - (David Eccles, EDF)
4. Update: Southern Area – (Luke Stevens, EDF)
5. Update: Planning – (Andrew Goodchild, EDF)
6. Any other business – (All)
7. Date of next meeting: Thursday 22 October 2020

Item 3: Project Progress Update

David Eccles, EDF

Stuart Crooks, Hinkley Point C MD, discusses the project reaching its latest milestone – on YouTube

“Stuart Crooks gives his latest update from the project as it reaches its latest milestone - the completion of Unit 2's reactor building foundation”. (1 June 2020)

https://www.youtube.com/watch?v=yji0jpQJ8G0&feature=emb_rel_end

**Nuclear Island Unit 1, as seen from Nuclear Island Unit 1 HK tower.
Work continues here where we achieved J0 just 11 months ago**



Unit 1 Nuclear Island as seen from a tower crane



Unit 1 Conventional Island, showing turbine hall and HR electrical buildings



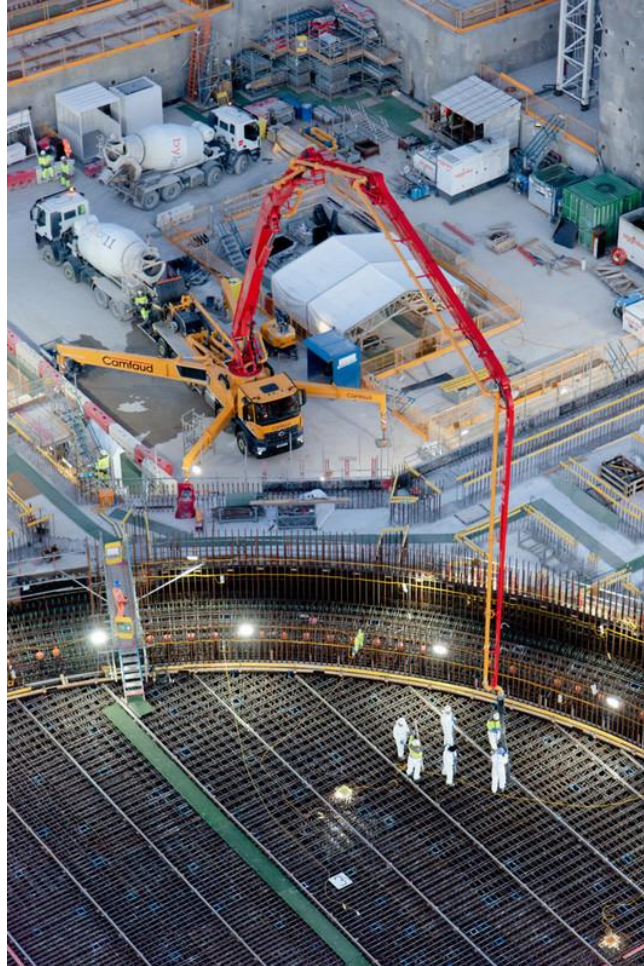
Unit 1 Heat Sink as seen from Unit 1 Conventional Island



J0 Unit 2, early photographs of concrete pour. The foundation, or common raft, is a cross shaped structure. The fifth and final concrete pour is in the circular central section



J0 Unit 2, concrete pour viewed from aerial platform



NOT PROTECTIVELY MARKED | ©2020 EDF Energy plc. All rights Reserved.

Unit 2 J0 final concrete pour as seen from a tower crane. Work can now begin on the permanent reactor buildings



Unit 2 Concrete pour. We have managed to achieve this milestone during the Coronavirus pandemic by adopting new, safe ways of working



A range of social distancing measures are in place at site, including automatic temperature monitoring, shift rotations and enhanced cleaning protocols

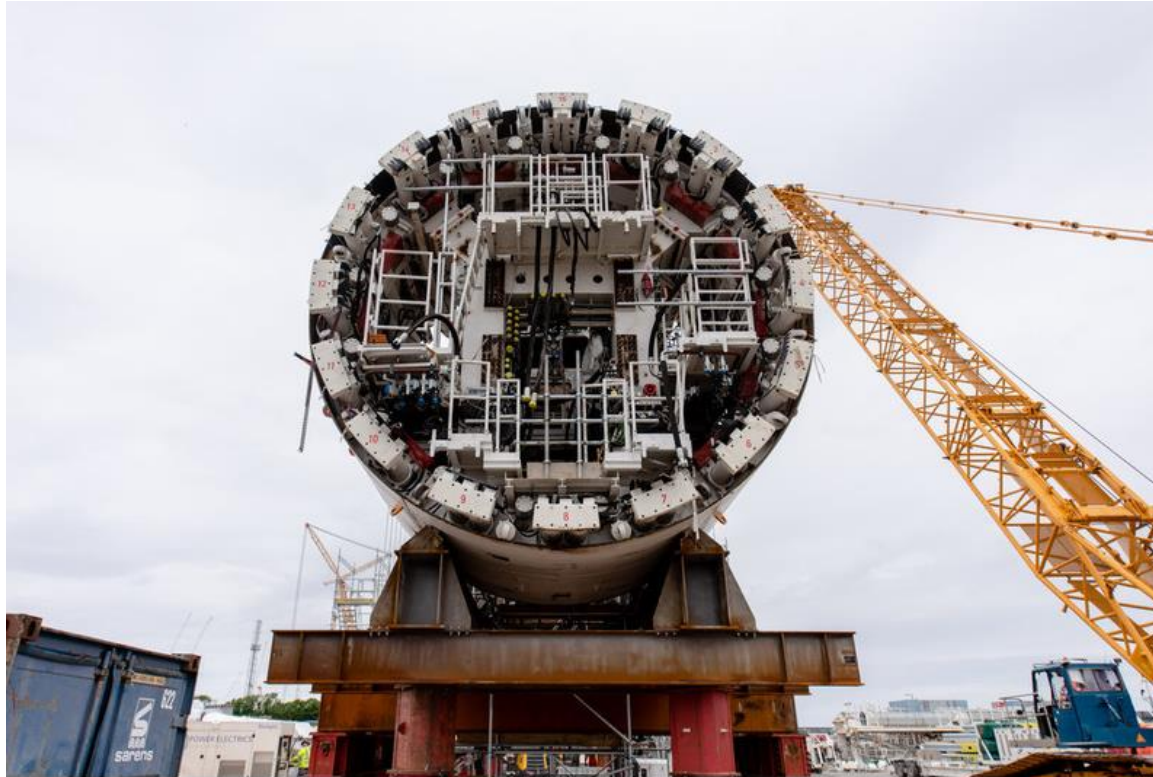


SGC250 known as Big Carl – largest land based crane in the world



Standing at 250 metres tall, it is taller than the London Eye and the Statue of Liberty. It has 52 counter weight containers each weighing 1000 tonnes, and is supported on 96 wheels travelling along a specially designed track.

Tunnel Boring Machine Assembly



Tunnel Boring Machine “Mary” being blessed ahead of activity, by our site Chaplain



Tunnel Boring Machine Intake Tunnel 1 – these now stretch approximately 1km under the Bristol Channel



A view of the concrete batching plant from an aerial platform. There are four batching plants capable of making 700m³ concrete per day – three are in use, and the fourth is a reserve



The concrete batching plant is essential to meet Hinkley Point C's need for nuclear safety grade concrete across the site



View of the jetty taken from one of the tower cranes on site. This is a temporary structure and operates in one of the highest tidal ranges in the world at 11 metres



**Deliveries being made to our jetty which became operational in Autumn 2019.
6000 tonnes of aggregate can be delivered per day by sea from Avonmouth,
Bristol**



KBJV – The finished sea wall as seen at high tide. It is built up of 308 Wave Return Units to protect the site

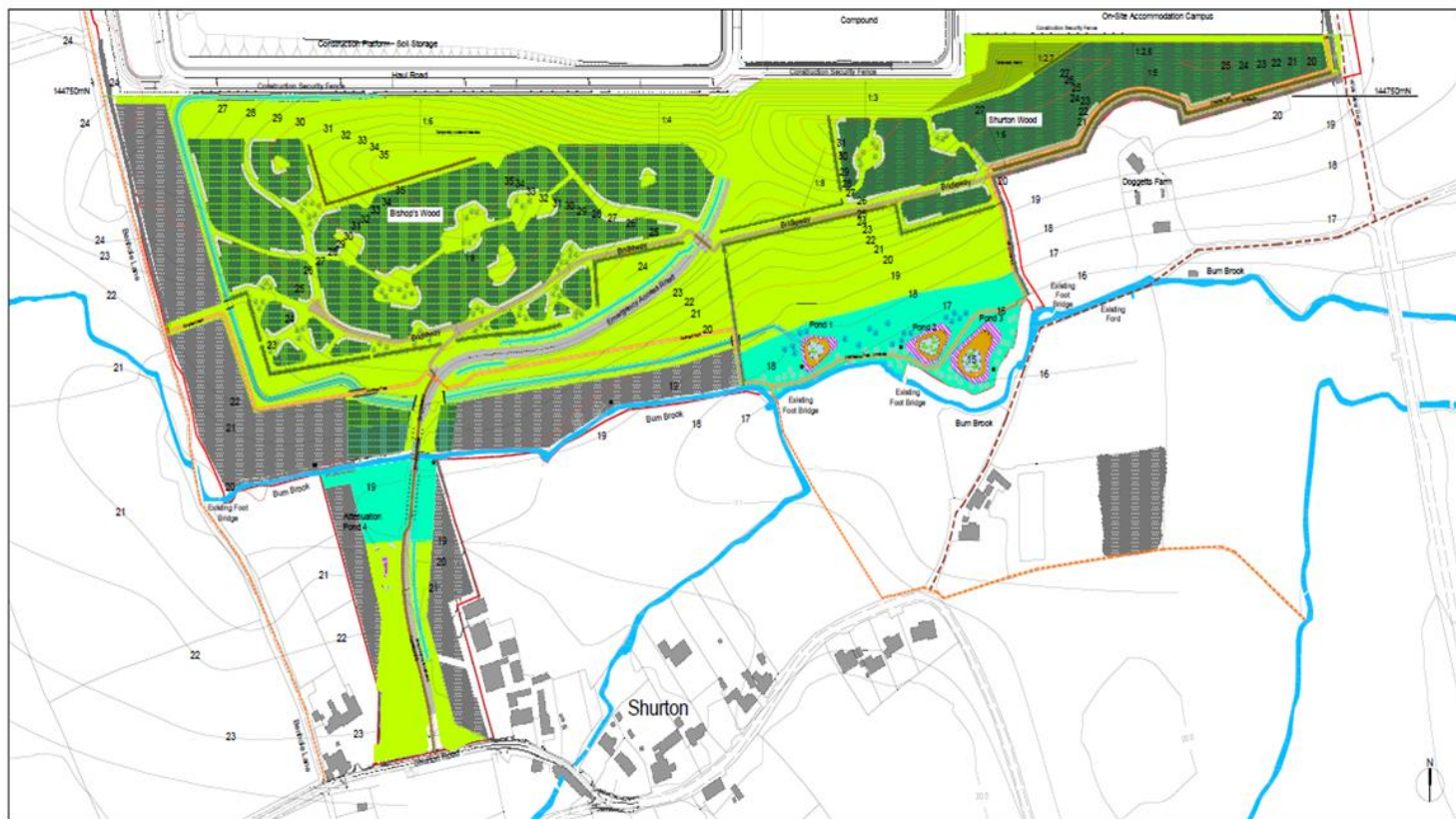


Thank You

Item 4: Southern Area Update

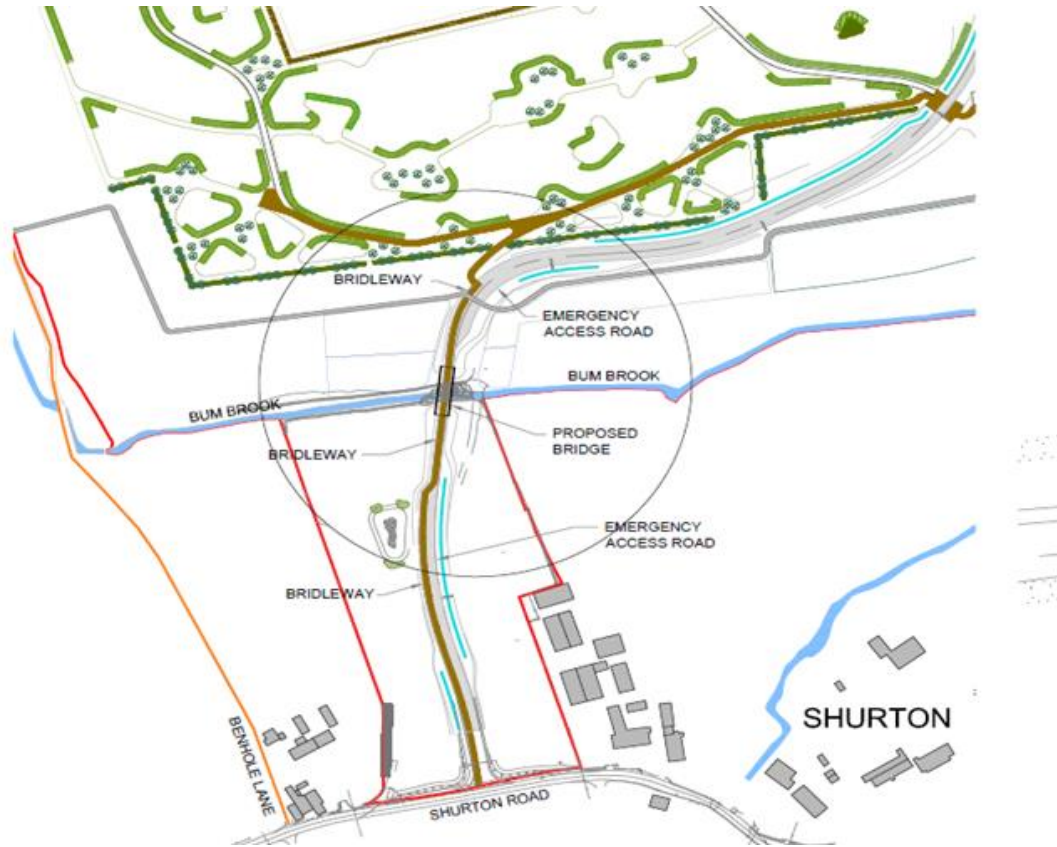
Luke Stevens, EDF

Early Restoration Landscape Plan



Landscape General Arrangement

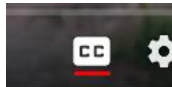
Site Map



Introducing the Southern Infrastructure Works – on YouTube

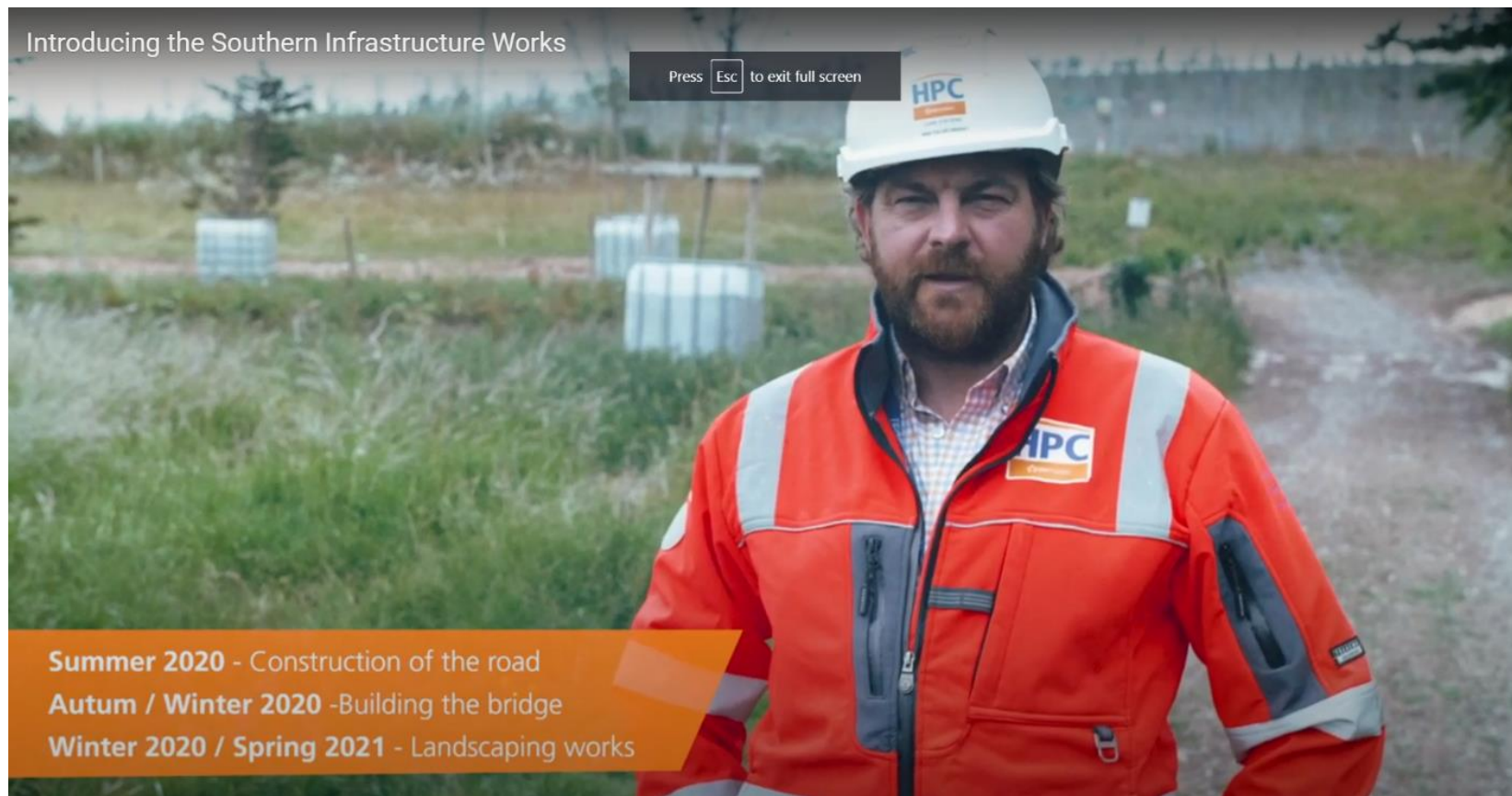
“Works will begin in the Southern Area of site to build the Emergency Access Road. Here, we outline what the works will look like”. (17 June 2020)

<https://www.youtube.com/watch?v=5GaOedrlc1k>



Click on this CC button to show the subtitles whilst the film runs

Timeline



Main Area of Works

Summer 2020 - Construction of the road
Autum / Winter 2020 -Building the bridge
Winter 2020 / Spring 2021 - Landscaping works



New bridge over Bum Brook

Summer 2020 - Construction of the road
Autum / Winter 2020 -Building the bridge
Winter 2020 / Spring 2021 - Landscaping works



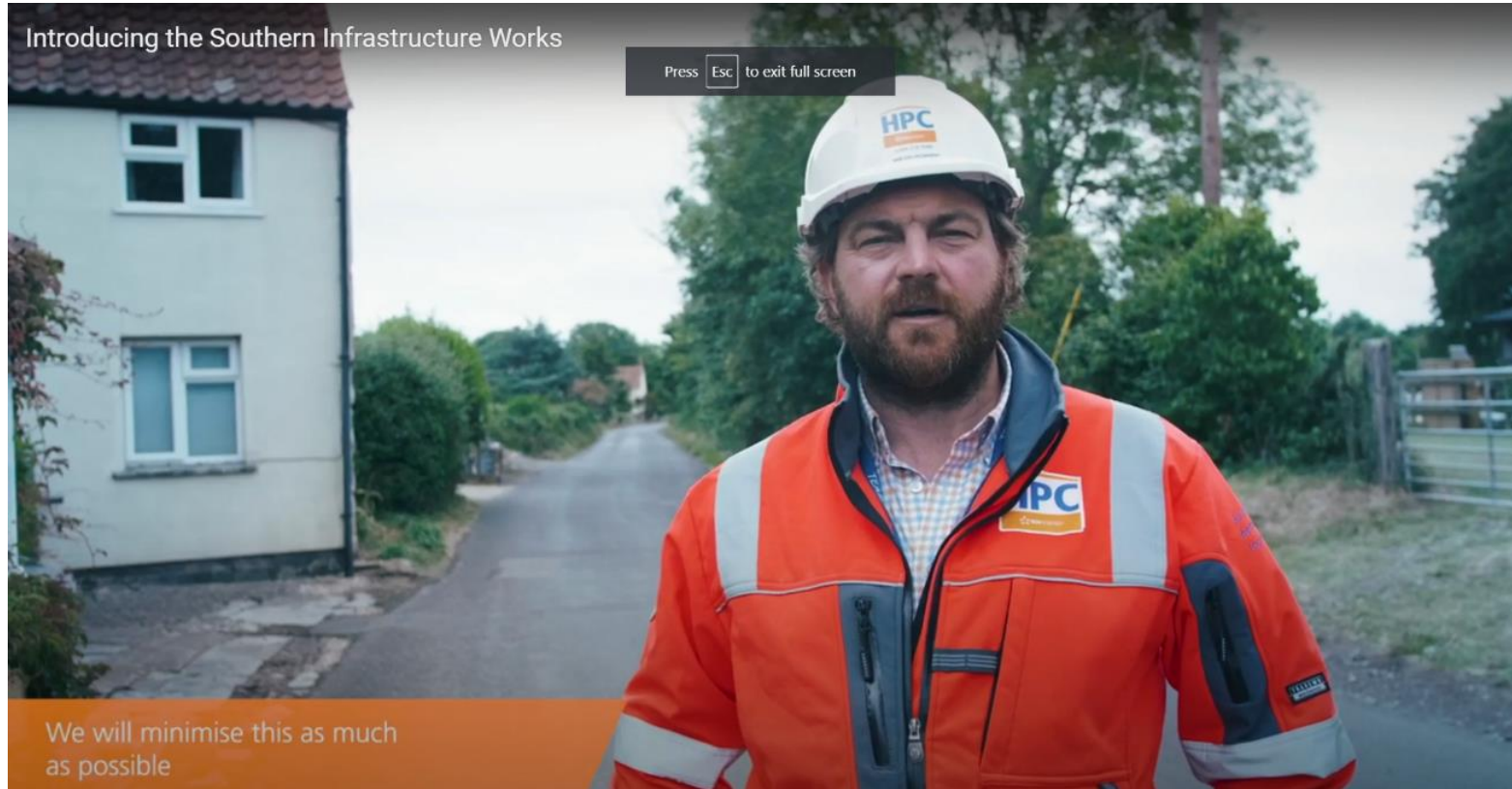
Footpaths

Coast Path



Footpath Diversion

Traffic



Wetland Planting

Summer 2020 - Construction of the road
Autum / Winter 2020 -Building the bridge
Winter 2020 / Spring 2021 - Landscaping works

Valley wetlands - marginal and aquatic



ALISMA PLANTAGO-AQUATICA
Water Plantain



BUTOMUS UMBELLATUS
Flowering Rush



IRIS PSEUDACORUS
Yellow Iris



LYTHRUM SALICARIA
Purple Loosestrife



MYRIOPHYLLUM SPICATUM
Spiked Water Milfoil



NUPHAR LUTEA
Yellow Water Lily



PERSICARIA AMPHIBIA
Amphibious Blight



PHRAGMITES AUSTRALIS
Common Reed

Thank You



Item 5: Planning Update

Andrew Goodchild, EDF

Item 6: Any other business

Item 7: Date of next meeting

Thursday 22 October 2020 - 6pm

Thank You