

welcome

Save today. Save tomorrow.





An Introduction to EDF Energy

Press Kit

EDF Energy

- EDF Energy was created in 2003 through the merger of London Electricity Group, Eastern Network and Seeboard. It expanded further in 2009 with the acquisition of British Energy.
- We currently supply gas and electricity to over 5.5 million customers. We are the UK's largest supplier of electricity by volume, taking account of our business and residential customers.
- We are also the biggest generator of electricity, and of low-carbon electricity in the UK. In addition to nuclear, we have coal and gas generation, wind farms as well as combined heat and power plants, producing together around one fifth of the UK's electricity.



EDF Energy Vision, Mission and Ambitions

- Our Vision
 - Leading the Energy Change
- Our Mission
 - We bring affordable low-carbon energy solutions home to everyone
- Our Ambitions
 - To achieve a zero harm safety record
 - To have high-performing people
 - To be first choice for our customers
 - To lead the way in nuclear power generation
 - To deliver a strong financial performance
 - To be a leader in sustainability

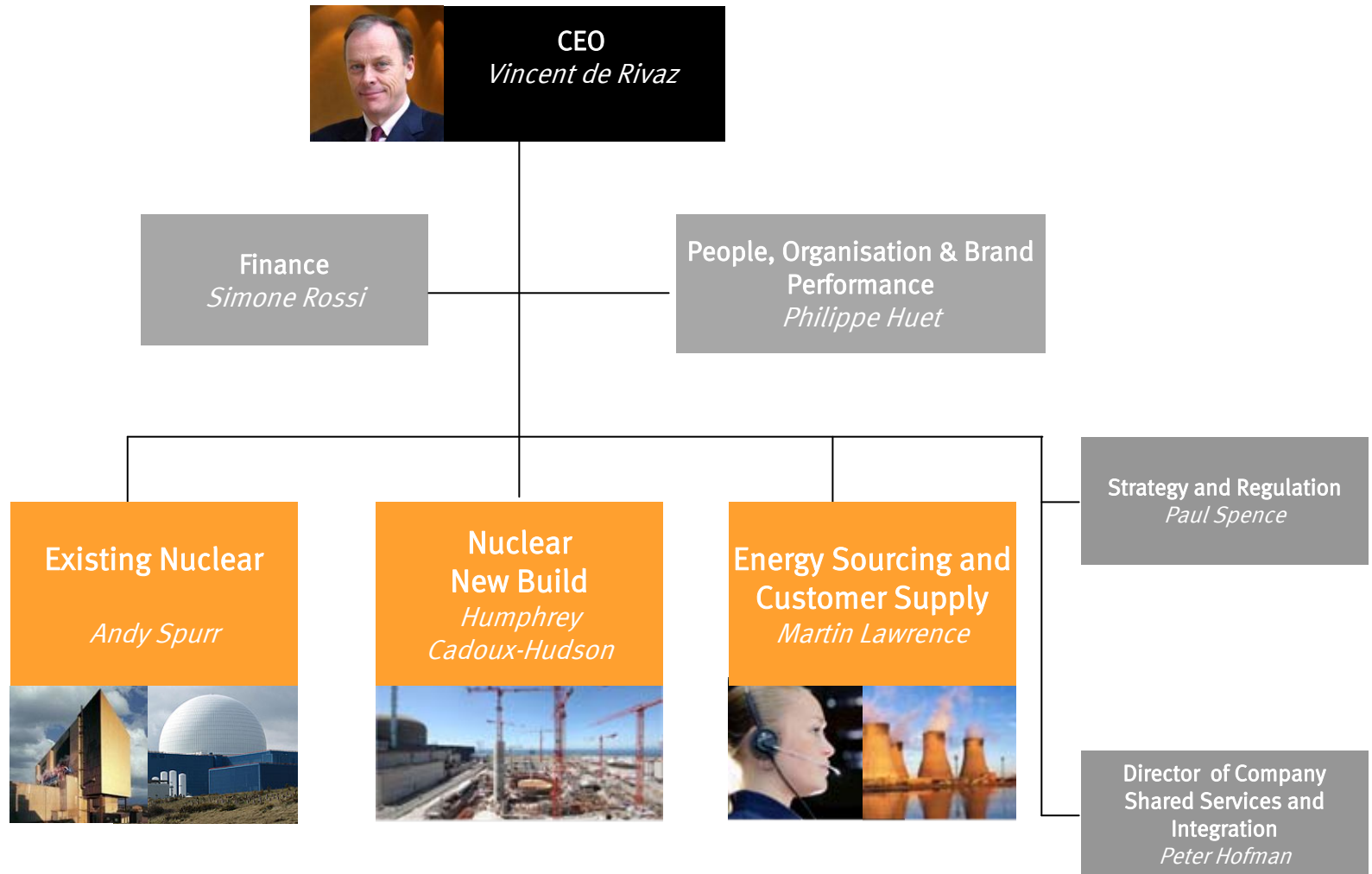


EDF Group

- Integrated energy company active in all businesses: generation, transmission, distribution, energy supply and trading.
- The leading electricity producer in Europe.
- Supplies energy and services to more than 38 million customers around the world, including more than 28 million in France.
- The Group generated consolidated sales of €66.3 billion in 2009, of which 49% were in Europe, excluding France.
- Key international growth markets are the UK, USA, South Africa and China.
- In France, EDF has mainly nuclear and hydro production facilities where 95% of the electricity output involves no CO2 emissions.
- EDF is listed on the Paris Stock Exchange and is a member of the CAC 40 index.



EDF Energy Structure



Chief Executive, Vincent de Rivaz

Vincent de Rivaz is the Chief Executive of EDF Energy, which incorporates British Energy from 5th January 2009. He had previously led the creation of EDF Energy through the merger of former London Electricity Group and Seeboard in 2003. He had been appointed CE of LE Group in February 2002. EDF Energy, which is a wholly owned subsidiary of EDF group, is now one of the UK's leading energy companies.

Mr de Rivaz was appointed member of the Executive Committee of EDF Group in December 2004. He joined the EDF Finance Department in 1999 as Deputy Chief Financial Officer and in 2000 became Head of Strategy and Finance with group wide responsibility for the financial strategy and operations for EDF Group. Between 1995 and 1998 he worked as Deputy Head of EDF International Division, creating a new Projects Department which he managed. This enabled Mr de Rivaz to be involved in, among others, the acquisition of London Electricity in 1998.

Between 1991 and 1994, he was Managing Director of the Hydro Power Department. From 1985 to 1991 he managed the Far East region placing EDF as a major international player in China, developing projects in the different areas of activity like nuclear, thermal and hydro generation and transmission. A Hydroelectric Engineer, he joined EDF in 1977 in the External Engineering Centre which managed the construction of energy sites for international clients, being part of several initiatives in Africa, Guyana and New Caledonia.

Mr de Rivaz was awarded The Energy Institute's 71st Melchett Award in June 2006. The Melchett Award is one of the Energy Institute's most prestigious prizes and is presented to an individual for an outstanding contribution whether in research, administration, construction or other professional activity, involving the scientific preparation or use of fuel and energy. He has recently received the Grade of "Chevalier" Legion d'honneur" and has also been named as the Prince of Wales's Ambassador.

He was born in October 1953.



UK Locations



Energy Sourcing and Customer Supply

- Business unit covers energy generation and supply:
- We supply electricity and gas to over 5.5 million residential and business customers.
- We are the largest supplier for major business customers, providing an end to end energy service for large businesses.
- Customer Service handling over 10 million calls and 250,000 letters a year through call centres in Sunderland, Hove and Exeter.
- Customer Field Services provides a meter reading, maintenance and data management service.
- EDF Energy portfolio also includes coal fired power stations at West Burton and Cottam, a new CCGT plant under construction at West Burton, CHP plant and wind farms.
- We also own Sutton Bridge CCGT under a hold separate agreement with the EU.
- EDF Energy has formed a joint venture with EDF Energies Nouvelles, called EDF Energy Renewables, for the operation, purchase and development of wind generation assets in the UK.
- Business unit employs 6000 people and contributed 15% of EDF Energy EBITDA in 2009.



Existing Nuclear

- We own and operate eight nuclear power stations in the UK.
- Our nuclear stations have a combined capacity of almost 9,000 megawatts. Between them, our nuclear stations generate around a sixth of the UK's electricity virtually carbon-free.
- In a typical year, our nuclear stations avoid the emission of more than 30 million tonnes of CO₂.
- The amount of CO₂ emitted during the entire lifecycle of a typical nuclear station is around 5 g/kwh which is similar to onshore wind turbines and about 180 times less than the CO₂ emitted by a typical coal-fired station.
- We operate two types of nuclear reactor: the advanced gas-cooled reactor (AGR); and a pressurised water reactor (PWR). Sizewell B is the only PWR nuclear power station in our portfolio.
- Business unit employs 6500 people and contributed 57% of EDF Energy EBITDA in 2009.



New Nuclear

- We believe new nuclear has a key role to play as part of a diverse generation mix to meet the three energy challenges to provide clean, secure and affordable energy.
- Our expertise as the world's most experienced nuclear operator, safely running 58 reactors in France and 15 in the UK means we can play a leading role in new nuclear in this country.
- We plan to build four new plants in the UK subject to receiving the necessary consents and a robust investment framework being in place.
- We would like to build two reactors at Hinkley Point and two at Sizewell.
- Business unit employs more than 100 people.



Sustainability

Protecting the Environment

- As part of its Climate Commitments, EDF Energy announced it is committed to reduce the carbon intensity of its legacy electricity generation activities by 60% by 2020.
- With the launch of our Sustainability Commitments in 2010 we reaffirmed this pledge and went further to commit to reduce the carbon intensity of our generation to 250g/Kwh by 2020 – which is lower than any of our competitors.
- EDF Energy's Programme for Greener Schools aims to reach 2.5 million children by 2012.
- EDF Energy is the official utilities partner of the London 2012 Olympic and Paralympic Games. It is also the first sustainability partner.
- We are encouraging energy efficiency via Team Green Britain www.teamgreenbritain.org and www.savetodaysavetomorrow.com
- Detailed energy efficiency advice for our customers is also provided by our specialist Green Energy Team and our Online Energy Adviser.
- The Green Fund provides finance to non-profit organisations for renewable energy generation equipment.
- Our current charity partner is the British Paralympic Association.



Sustainability

Community Action

- Providing support for vulnerable customers – Energy Assist, EDF Energy Trust Fund.
- Annual *Safe Warm and Well* campaign, which provides advice as to how vulnerable people can take advantage of measures to keep their energy bills low. This includes providing support through our partner WRVS.
- We aim to provide enduring support for our most vulnerable supply customers.
- In 2008/09, EDF Energy spent over £11 million on targeted help for its vulnerable customers, which was a contribution 10% greater than the voluntary commitment we had agreed with Government. The company is planning to spend a further £13 million in 2009/10 and £16 million next year.



EDF Energy Contacts

Press Office

The EDF Energy press office is comprised of three teams covering **Energy Sourcing and Customer Supply, Nuclear**; and **Regions**, led by Head of Media Relations, Kaa Holmes:

Kaa Holmes - Head of Media Relations: 020 7752 2179

kaa.holmes@edfenergy.com

Joanne Smalley – Senior Media Manager – Corporate: 020 7752 2181

Joanne.smalley@edfenergy.com

Stephen Walker – External Communications Assistant: 020 7752 2260

stephen.walker@edfenergy.com

Energy Sourcing and Customer Supply team

Please contact this team for media queries about customer issues, brand and sponsorship activities.

Phillippa Coates – Press Officer: 020 7752 2266

phillippa.coates@edfenergy.com

Michael Stuart – Press Officer: 020 7089 0315

michael.stuart@edfenergy.com



EDF Energy Contacts

Nuclear team

Please contact this team for queries about our existing nuclear fleet, our nuclear new build plans and other generation issues.

Sue Fletcher – Senior Media Manager: 01355 846 282

sue.fletcher@edf-energy.com

Jonathan Levy – Media Manager: 020 7752 2265

jonathan.levy@edfenergy.com

Martyn Butlin – Press Officer – North: 01524 863565

martyn.butlin@edf-energy.com

Marjorie Barnes – Press Officer – South East: 01473 266 484

marjorie.barnes@edf-energy.com

Gordon Bell – Press Officer – South West – 01278 654535

gordon.2.bell@edf-energy.com

Claire Cook – Press Officer – Scotland – 01355 842 283

claire.cook@edf-energy.com

Catherine McEwan – Nuclear Media Team Coordinator: 01355 846 281

catherine.mcewan@edf-energy.com



EDF Energy Contacts

Regions team

Please contact this team for queries about non- nuclear regional issues.

Dan Pritchard – Regional Media Manager – 01392 813 783

dan.pritchard@edfenergy.com

Becky Clark – Media Executive

becky.clark@edfenergy.com

Charlotte Mitchell – Media Assistant

charlotte.mitchell@edfenergy.com

Emergency/Out of hours contacts

For urgent media enquiries out of office hours, please call 01452 652 233 and a press officer will call you back.



thank you